

# TEST DATA OF FTA-100-□□□

Noise Filter

June. 21. 2011

Approved by : Toshio Watanabe  
Toshio Watanabe Design Manager

Prepared by : Yuichi Uozu  
Yuichi Uozu Design Engineer

**COSEL CO.,LTD.**

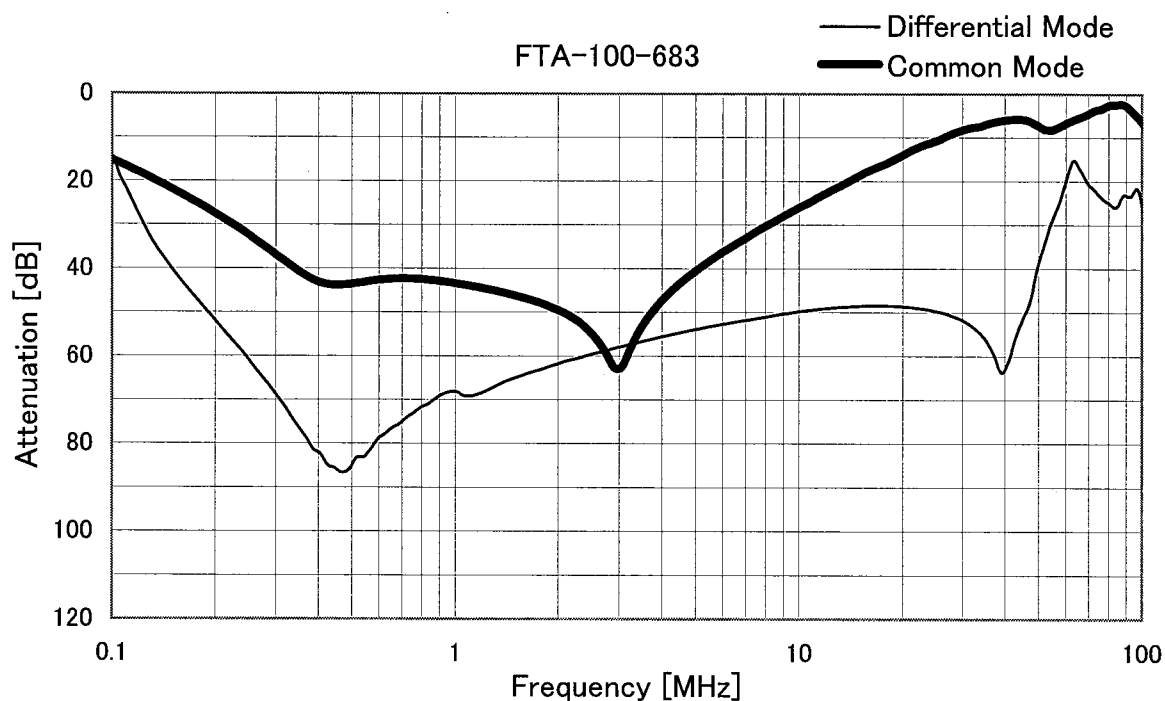
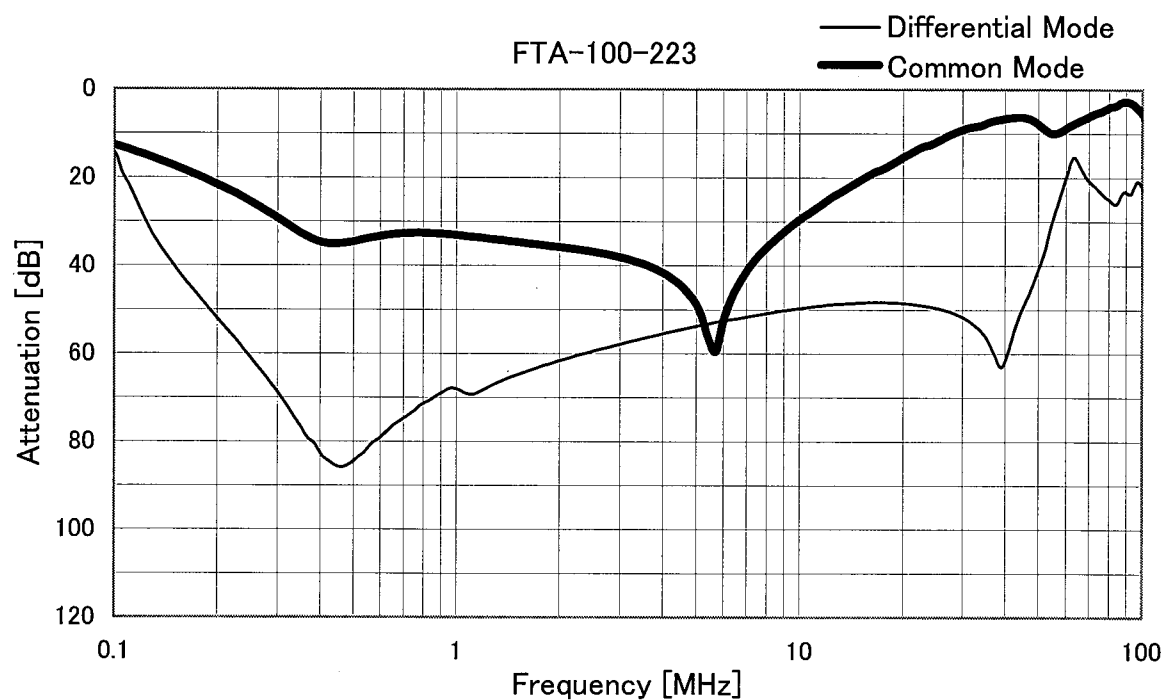
## CONTENTS

|   |   |
|---|---|
| 1.Attenuation Characteristics . . . . . | 1 |
| 2.Leakage Current . . . . .             | 3 |
| 3.Figure of Testing Circuitry . . . . . | 4 |

(Final Page 4)

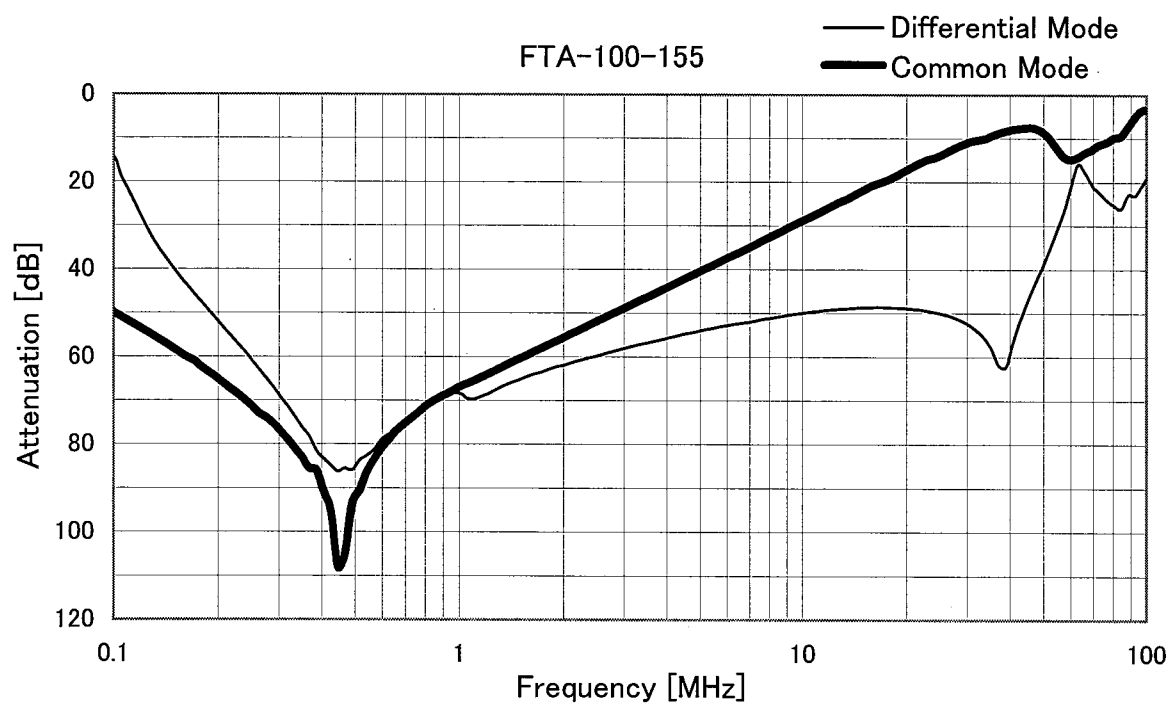
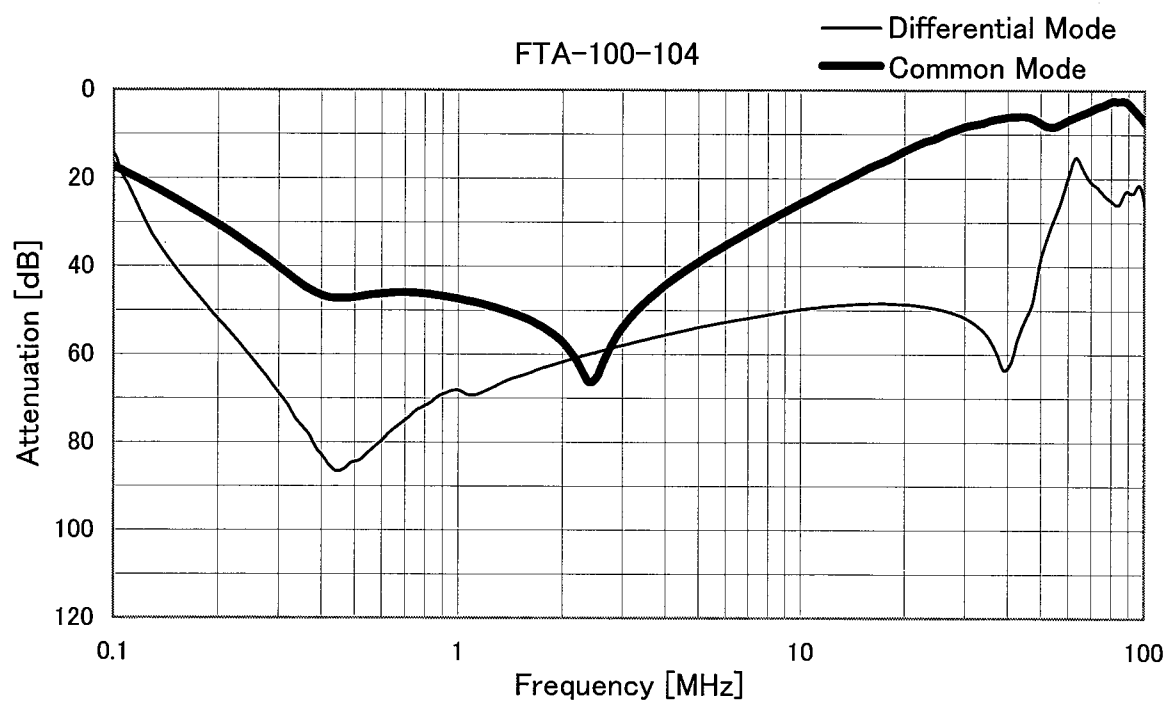


|        |                             |                   |          |
|--------|-----------------------------|-------------------|----------|
| Model  | FTA-100-□□□                 | Temperature       | 25°C     |
| Item   | Attenuation Characteristics | Testing Circuitry | Figure A |
| Object | _____                       |                   |          |



# COSEL

|        |                             |                   |          |
|--------|-----------------------------|-------------------|----------|
| Model  | FTA-100-□□□                 | Temperature       | 25°C     |
| Item   | Attenuation Characteristics | Testing Circuitry | Figure A |
| Object | _____                       |                   |          |



# COSEL

|        |                 |  |
|--------|-----------------|--|
|        |                 | Temperature 25°C<br>Testing Circuitry Figure B |
| Model  | FTA-100-□□□     |  |
| Item   | Leakage Current |  |
| Object | _____           |  |

## 1.Results

[mA]

| Model       | Standards | Input Volt. |         |         |         |         | Note  |
|-------------|-----------|-------------|---------|---------|---------|---------|---|
|             |           | 200 [V]     | 250 [V] | 400 [V] | 480 [V] | 500 [V] |   |
| FTA-100-223 | UL1283    | 0.41        | 0.52    | 0.85    | 1.0     | 1.1     |   |
| FTA-100-683 | UL1283    | 1.2         | 1.6     | 2.6     | 3.2     | 3.3     |   |
| FTA-100-104 | UL1283    | 1.9         | 2.4     | 4.0     | 4.8     | 4.9     |   |
| FTA-100-155 | UL1283    | 56.0        | 70.0    | 112.0   |         |         | Δ-connection's rated voltage is 400V(440Vmax) |

## 2.Condition

Leakage current value is concluded after measuring both phases of AC input and by choosing the larger one.

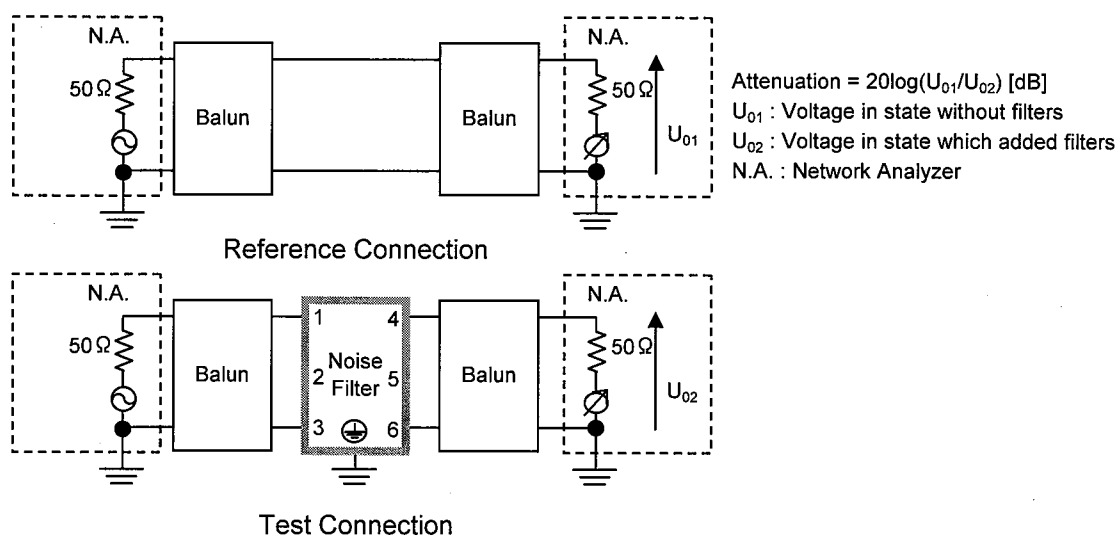


Figure A - 1 Differential mode attenuation measurement

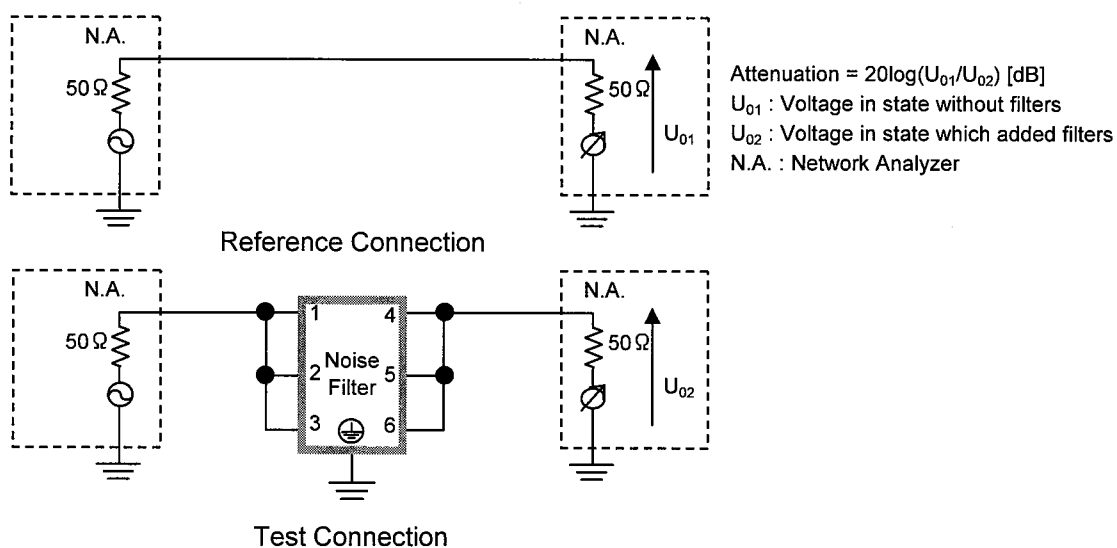


Figure A - 2 Common mode attenuation measurement

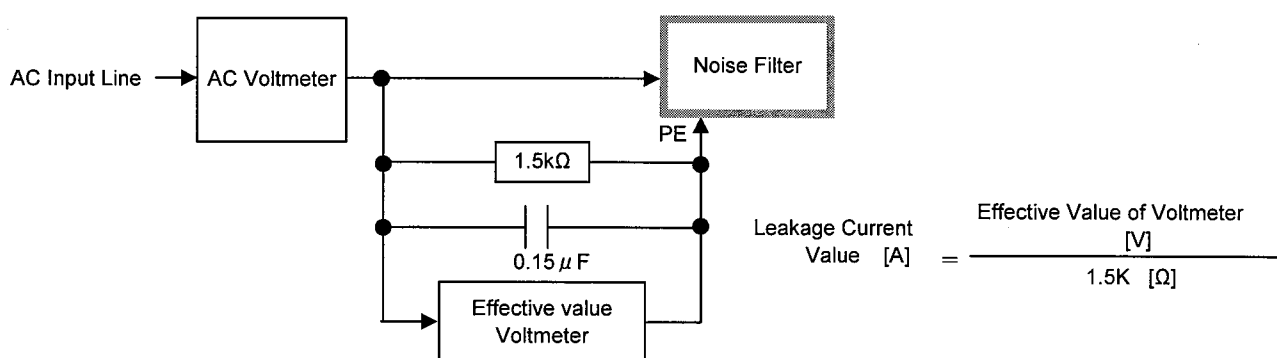


Figure B Leakage current measurement ( UL1283 )