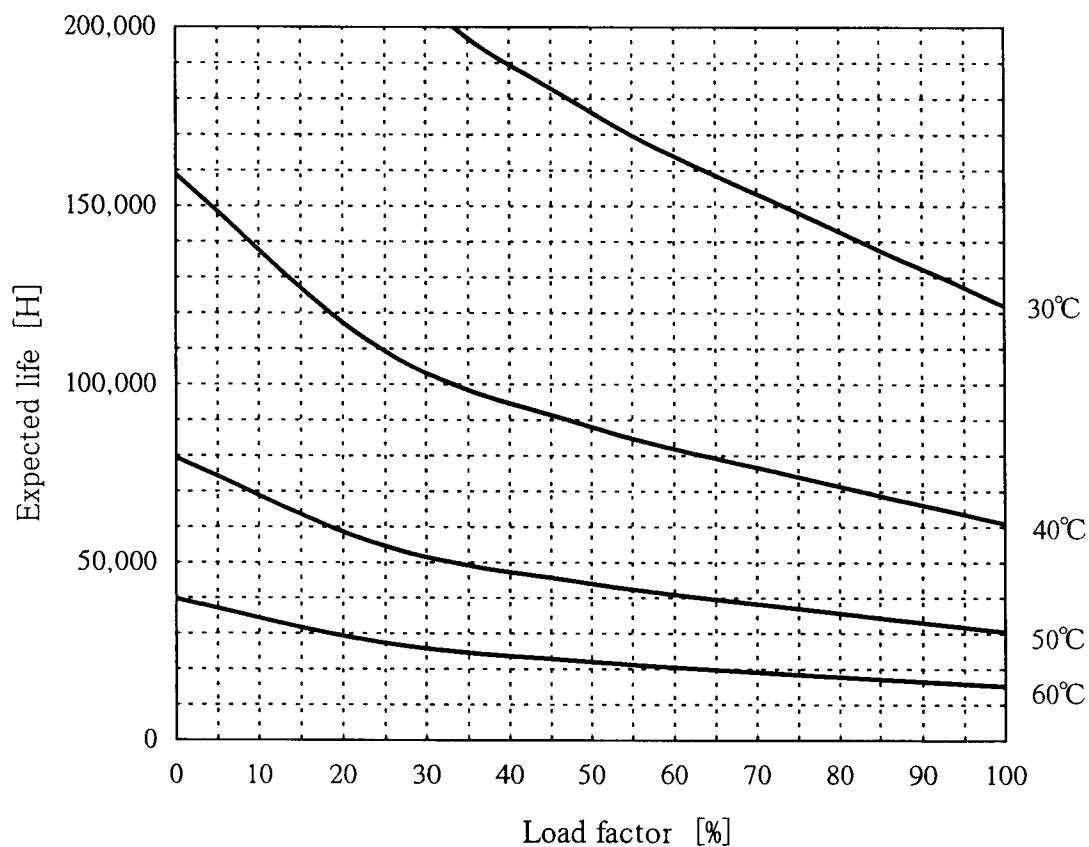


## LDA75F-30 Expected Life : 推定寿命



•Above expected life time is calculated according our calculation standard.

上記推定寿命は、当社算出基準に従い算出したものです。

•Over the area of 100,000 hours, the degradation of sealing rubber, etc., is not included in the calculation.

10万時間以上の領域では、封ロゴムの劣化等の影響は、計算式には含まれていません。

•Please refer derating curve shown in instruction manual about the maximum value of ambient temperature.

周囲温度の上限は、取扱説明書のディレーティング表をご参照ください。

## Conditions

(1)Input voltage

AC85~264V 60Hz

(2)Output voltage/  
current

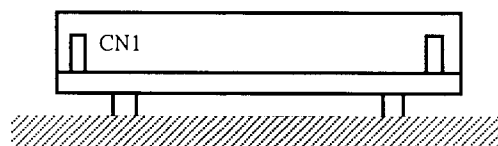
DC OUTPUT	Load factor				
	100%	75%	50%	25%	0%
30V	2.5A	1.875A	1.25A	0.625A	0A
—	—	—	—	—	—
—	—	—	—	—	—

(3)Cooling method

Convection

(4)Mounting method

Refer below



Mounting method(A)