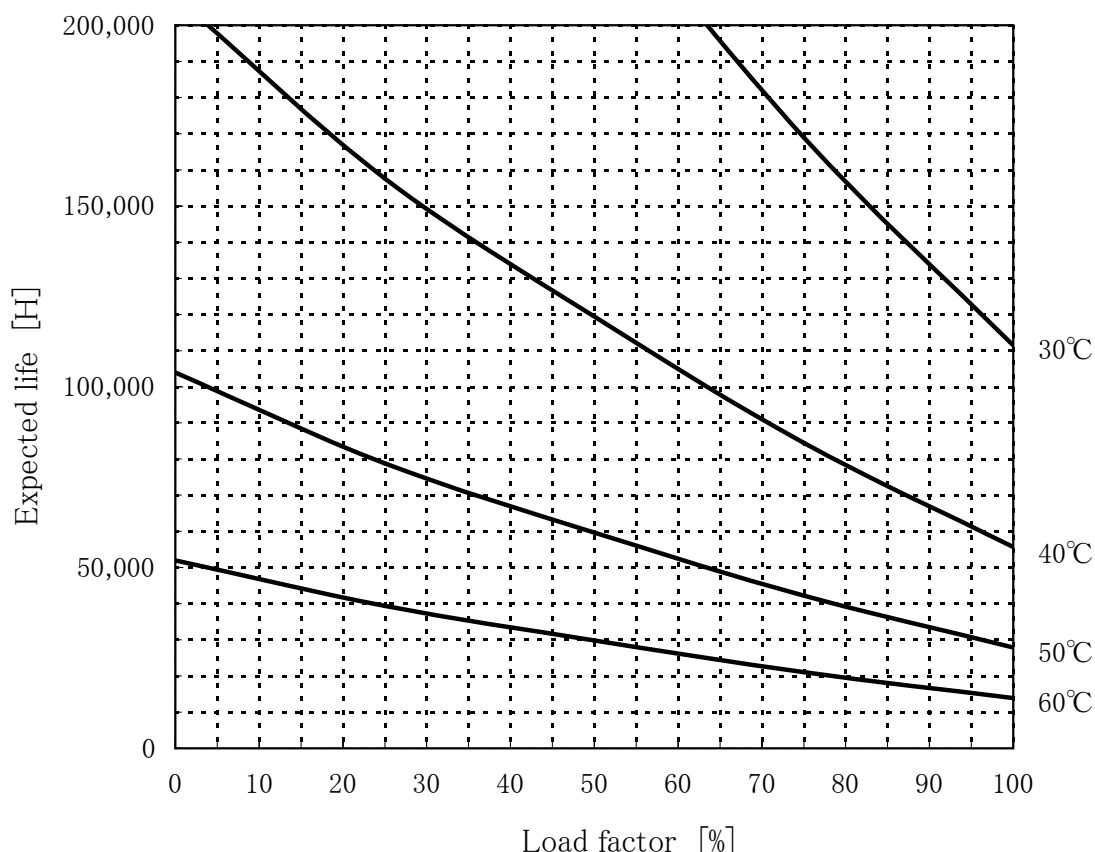


LDC60F-1 Expected Life : 推定寿命

Cosel co.,ltd.

December 17, 2004



• Above expected life time is calculated according our calculation standard.

上記推定寿命は、当社算出基準に従い算出したものです。

• Over the area of 100,000 hours, the degradation of sealing rubber, etc., is not included in the calculation.
10万時間以上の領域では、封ロゴムの劣化等の影響は、計算式には含まれていません。

• Please refer derating curve shown in instruction manual about the maximum value of ambient temperature.
周囲温度の上限は、取扱説明書のデレーティング表をご参照ください。

Conditions

(1)Input voltage

AC85V~264V 60Hz

(2)Output voltage/
current

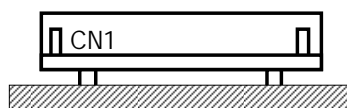
DC OUTPUT	Load factor				
	100%	75%	50%	25%	0%
5V	5A	3.75A	2.5A	1.25A	0A
12V	2.5A	1.875A	1.25A	0.625A	0A
-12V	0.5A	0.375A	0.25A	0.125A	0A

(3)Cooling method

Convection

(4)Mounting method

Refer below



Mounting method(A)

The data mentioned above is measured based on a COSEL's condition. Since an actual life time depends on ambient conditions of Power Supply, such as cabinet space, it might not be the same value as an expected life time. Therefore, please evaluate the Power Supply sufficiently under your condition before using.

上記データは当社条件で測定したものです。設置条件によっては(狭い筐体など)、実際の寿命時間がこの推定値どおりとならない場合がございますので、ご使用前に貴社条件でご評価の上ご使用ください。