

Date : Apr.4,2003

Temperature increase of main components: 主要部品温度上昇

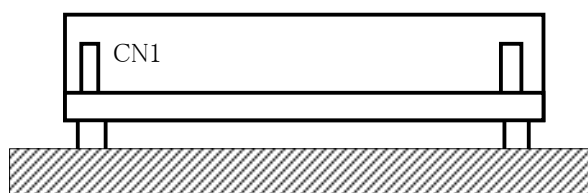
Model: LEA100F

## 1. Conditions

- (1) Input : AC 85 ~ 264V  
 (2) Output : Rated output  
 (3) Mounting method : Shown as Fig.1.1

## 2. Result

No.	Parts name	Symbol No.	Increase ( $\Delta T$ )						Rated temp. [°C]	Reference
			[deg]							
			9V	18V	30V	48V				
1	Rectifier(Input)	SS101	64	65	68	61			150	Junction Temp.
2	Line Filter	L101	50	45	53	49			120	
3	Choke Coil(Pfc)	L103	52	48	52	49			120	
4	Transistor	TR105	69	65	70	65			150	Junction Temp.
5	Rectified Diode(Pfc)	SS102	59	49	56	54			150	Junction Temp.
6	Switching Transistor	TR201	66	64	69	68			150	Junction Temp.
7	Transformer	T201	53	50	50	53			120	
8	Rectified Diode(Output)	SS501	72	56	54	43			150	Junction Temp.
9	Output Choke	L507	55	35	33	38			120	
10	Input Capacitor	C119	33	29	33	31			105	
11	Output Capacitor	C507	38	22	18	16			105	
12										
13										
14										
15										
16										
17										
18										
19										
20										



(Side view)

Fig.1.1 Mounting method  
(Normal position)