

Date : Mar.13,2003

Temperature increase of main components: 主要部品温度上昇

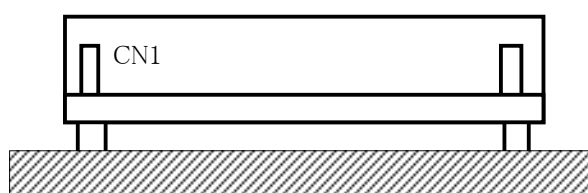
Model: LEA50F

1. Conditions

- (1) Input : AC 85 ~ 264V
 (2) Output : Rated output
 (3) Mounting method : Shown as Fig.1.1

2. Result

No.	Parts name	Symbol No.	Increase (ΔT)						Rated temp. [°C]	Reference
			[deg]							
			9V	18V	30V	48V				
1	Input Diode	SS101	57	58	61	58			150	Junction Temp.
2	Line Filter	L101	35	32	38	37			120	
3	Choke Coil(Pfc)	L103	52	49	51	50			120	
4	Transistor(Pfc)	TR105	61	57	61	63			150	Junction Temp.
5	Rectified Diode(Output)	D102	57	54	57	54			150	Junction Temp.
6	Switching Transistor	TR201	59	60	61	62			150	Junction Temp.
7	Transformer	T201	51	51	47	48			130	
8	Rectified Diode(Output)	SS501	67	47	37	30			150	Junction Temp.
9	Output Choke	L507	48	39	32	31			120	
10	Input Capacitor	C119	35	32	35	36			105	
11	Output Capacitor	C507	35	21	16	15			105	
12										
13										
14										
15										
16										
17										
18										
19										
20										



(Side view)

Fig.1.1 Mounting method
(Normal position)