

Date : Jan.20,1999

Temperature increase of main components

Model : LEA50F

1. Conditions

- (1) Input : AC 85 ~ 264 [V]
- (2) Output : Rated output
- (3) Mounting method : Shown as Fig.1.1

2. Result

No.	Parts name	Symbol No.	Increase (ΔT)						Rated temp. [°C]	Reference
			[deg]							
			5V	12V	15V	24V				
1	Input rectifier	SS101	62	62	62	62			150	Junction temp.
2	Line filter	L101	55	55	55	55			120	
3	Choke coil(PFC)	L103	50	50	50	50			120	
4	Transistor(PFC)	TR105	63	62	62	57			150	Junction temp.
5	Rectified diode(PCF)	D102	53	53	53	53			150	Junction temp.
6	Switching transistor	TR201	63	59	59	56			150	Junction temp.
7	Transformer	T201	50	46	46	39			130	
8	Rectified diode(Output)	SS501	77	59	53	40			150	Junction temp.
9	Output choke	L507	54	44	38	32			120	
10	Input capacitor	C119	31	31	31	30			105	
11	Output capacitor	C507	33	21	19	13			105	
12										
13										
14										
15										
16										
17										
18										
19										
20										

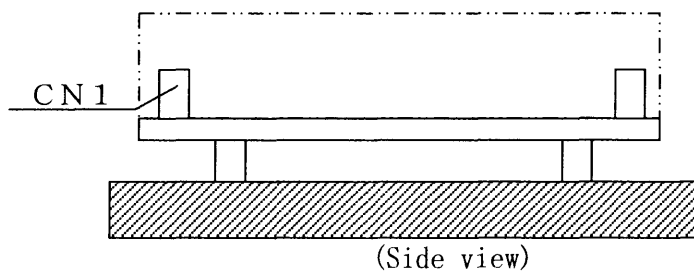


Fig.1.1 Mounting method
(Normal position)