

Date : Apr.10,2003

Temperature increase of main components: 主要部品温度上昇

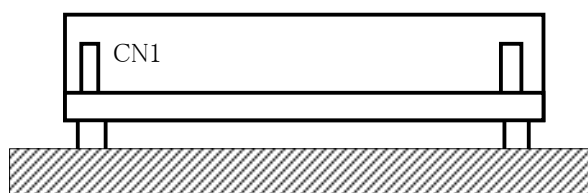
Model: LEA75F

1. Conditions

- (1) Input : AC 85 ~ 264V
 (2) Output : Rated output
 (3) Mounting method : Shown as Fig.1.1

2. Result

No.	Parts name	Symbol No.	Increase (ΔT)						Rated temp. [°C]	Reference
			[deg]							
			18V	30V						
1	Input Rectifier	SS101	66	68					150	Junction Temp.
2	Line Filter	L101	43	40					120	
3	Input Choke(Pfc)	L103	54	55					120	
4	Transistor(Pfc)	TR105	67	63					150	Junction Temp.
5	Rectified Diode(Pfc)	D102	60	66					150	Junction Temp.
6	Switching Transistor	TR201	62	57					150	Junction Temp.
7	Transformer	T201	63	58					130	
8	Rectified Diode(Output)	SS501	60	43					150	Junction Temp.
9	Output Choke	L507	44	38					120	
10	Input Capacitor	C119	28	28					105	
11	Output Capacitor	C507	28	20					105	
12										
13										
14										
15										
16										
17										
18										
19										
20										



(Side view)

Fig.1.1 Mounting method
(Normal position)