

Date : Apr.9,2003

Temperature increase of main components: 主要部品温度上昇

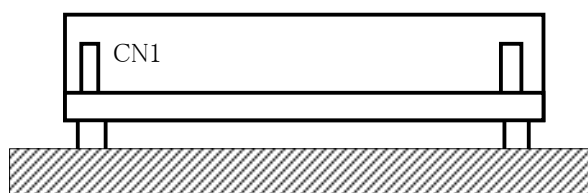
Model: LEA75F

1. Conditions

- (1) Input : AC 85 ~ 264V
 (2) Output : Rated output
 (3) Mounting method : Shown as Fig.1.1

2. Result

No.	Parts name	Symbol No.	Increase (ΔT)						Rated temp. [°C]	Reference
			[deg]							
			3.3V	9V						
1	Rectifier(Input)	SS101	53	68					150	Junction Temp.
2	Line Filter	L101	30	46					120	
3	Choke Coil(Pfc)	L103	41	48					120	
4	Transistor(Pfc)	TR105	58	61					150	Junction Temp.
5	Rectified Diode(Pfc)	D102	57	66					150	Junction Temp.
6	Switching Transistor	TR201	59	58					150	Junction Temp.
7	Transformer	T201	55	54					130	
8	Rectified Diode(Output)	SS501	76	61					150	Junction Temp.
9	Output Choke	L507	57	44					120	
10	Input Capacitor	C119	26	27					105	
11	Output Capacitor	C507	37	35					105	
12										
13										
14										
15										
16										
17										
18										
19										
20										



(Side view)

Fig.1.1 Mounting method
(Normal position)