

Temperature increase of main components: 主要部品温度上昇

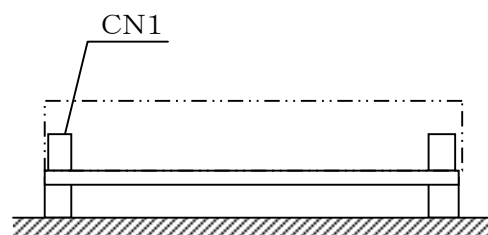
LFA100F

1. Conditions

- (1) Input :AC 85 ~ 264 [V]
 (2) Output :Rated output *Derating is required at AC85 - 90[V] input.
 (3) Mounting method :Shown as Fig.1.1

2. Result

No.	Parts name	Symbol No.	Increase (ΔT)							Rated temp. [°C]	Reference
			[deg]								
			3.3V	5V	12V	15V	24V	36V	48V		
1	Line filter	L102	45	45	45	45	45	45	45	130	
2	Rectifier(Input)	SS101	57	70	73	67	67	68	70	150	Junction Temp.
3	Choke coil(PFC)	L104	47	57	56	56	55	55	56	130	
4	Input capacitor	C127	26	37	36	35	35	35	35	105	
5	Rectified diode(Output)	D101	51	63	61	60	63	60	63	150	Junction Temp.
6	Transistor(PFC)	TR101	60	67	67	70	68	66	70	150	Junction Temp.
7	Switching transistor	TR201	61	69	66	67	67	65	68	150	Junction Temp.
8	Transformer	T201	54	57	55	47	50	56	53	130	
9	Rectified MOS-FET(Output)	TR501	70	70	—	—	—	—	—	150	Junction Temp.
10	Rectified Diode(Output)	SS501	—	—	73	47	49	45	39	150	Junction Temp.
11	Output Choke	L507	57	43	48	43	42	38	36	130	
12	Output Capacitor	C513	36	32	25	23	26	23	22	105	
13											
14											
15											
16											
17											
18											
19											
20											



(Side view)

Fig.1.1 Mounting method
(Normal position)

*All information presented herein are not guaranteed.

*本資料は参考資料であり、その内容を保証するものではありません。