

Temperature increase of main components: 主要部品温度上昇

Model: LFA15F

1. Conditions

- (1) Input :AC 85 ~ 264 [V]
 (2) Output :Rated output *Derating is required at AC85 - 90[V] input.
 (3) Mounting method :Shown as Fig.1.1

2. Result

No.	Parts name	Symbol No.	Increase (ΔT)						Rated temp. [°C]	Reference
			[deg]							
			3.3V	5V	12V	15V	24V			
1	Line filter	L101	30	55	53	44	57		130	
2	Rectifier(Input)	SS101	40	53	48	48	56		150	Junction Temp.
3	Power control IC	IC101	57	56	53	51	54		150	Junction Temp.
4	Transformer	T101	38	47	43	45	41		130	
5	Output Diode	D502	59	70	46	45	41		150	Junction Temp.
6	Output Choke	L501	39	51	30	28	24		120	
7	Input Capacitor	C103	18	22	21	21	22		105	
8	Electrolytic Capacitor	C107	26	34	30	30	30		105	
9	Output Capacitor	C508	25	29	22	17	20		105	
10										
11										
12										
13										
14										
15										
16										
17										
18										
19										
20										

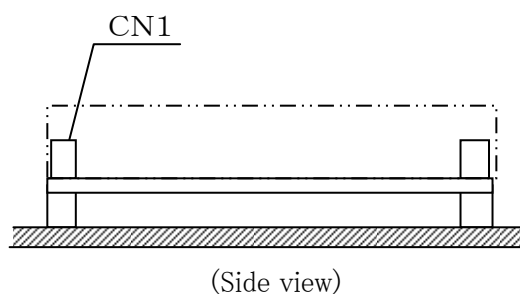


Fig.1.1 Mounting method
(Normal position)

*All information presented herein are not guaranteed.

*本資料は参考資料であり、その内容を保証するものではありません。