

Date : Nov.26,2010

Temperature increase of main components: 主要部品温度上昇

LFA240F

1. Conditions

- (1) Input : AC 85 ~ 264 [V]
 (2) Output : Rated output *Derating is required at AC85 - 90[V] input.
 (3) Mounting method : Shown as Fig.1.1

2. Result

No.	Parts name	Symbol No.	Increase (ΔT)			Rated Temp [°C]	Reference
			[deg]				
			24V	36V	48V		
1	Line Filter	L102	62	64	59	120	
2	Rectifier(Input)	SS101	79	81	80	150	Junction Temp.
3	Inrush Current Limiting Thyristor	SCR101	78	78	76	150	Junction Temp.
4	Choke Coil(PFC)	L104	75	76	73	130	
5	Input Capacitor	C127	31	32	31	105	
6	Rectified Diode(PFC)	SS102	65	66	65	150	Junction Temp.
7	Transistor(PFC)	TR101	72	75	74	150	Junction Temp.
8	Switching Transistor	TR201	71	74	73	150	Junction Temp.
9	Transformer	T201	64	65	65	130	
10	Rectified Diode(Output)	SS502	79	86	84	150	Junction Temp.
11	Output Choke	L507	29	29	24	130	
12	Output Capacitor	C513	50	53	52	105	
13							
14							
15							
16							
17							
18							
19							
20							

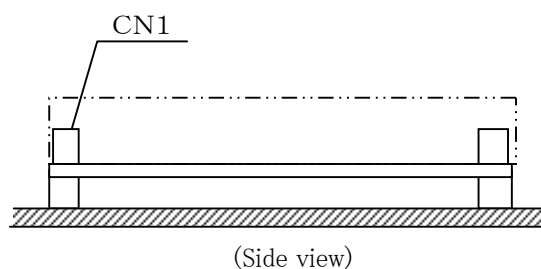


Fig.1.1 Mounting method
(Normal position)

*All information presented herein are not guaranteed.

*本資料は参考資料であり、その内容を保証するものではありません。