

Temperature increase of main components: 主要部品温度上昇

Model: LFA30F

1. Conditions

- (1) Input :AC 85 ~ 264 [V]
 (2) Output :Rated output *Derating is required at AC85 - 90[V] input.
 (3) Mounting method :Shown as Fig.1.1

2. Result

No.	Parts name	Symbol No.	Increase (ΔT)						Rated temp. [°C]	Reference
			[deg]							
			3.3V	5V	12V	15V	24V			
1	Line filter	L101	36	65	56	53	58		130	
2	Rectifier(Input)	SS101	38	57	49	48	52		150	Junction Temp.
3	Input capacitor	C104	22	29	24	26	27		105	
4	Switching transistor	TR201	57	69	67	69	65		150	Junction Temp.
5	Transformer	T101	44	55	49	49	49		130	
6	Rectified diode(Output)	SS501	63	68	62	57	47		150	Junction Temp.
7	Output choke	L501	56	58	36	31	28		120	
8	Output capacitor	C509	28	29	21	20	17		105	
9										
10										
11										
12										
13										
14										
15										
16										
17										
18										
19										
20										

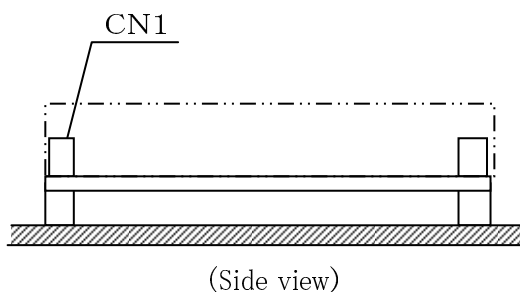


Fig.1.1 Mounting method
(Normal position)

*All information presented herein are not guaranteed.

*本資料は参考資料であり、その内容を保証するものではありません。