

Temperature increase of main components: 主要部品温度上昇

LFA50F

1. Conditions

- (1) Input :AC 85 ~ 264 [V]
 (2) Output :Rated output *Derating is required at AC85 – 90[V] input.
 (3) Mounting metho :Shown as Fig.1.1

2. Result

No.	Parts name	Symbol No.	Increase (ΔT)							Rated temp. [°C]	Reference
			[deg]								
			3.3V	5V	12V	15V	24V	36V	48V		
1	Rectifier(Input)	SS101	40	58	58	55	57	56	58	150	Junction Temp.
2	Line filter	L102	31	46	50	44	43	44	50	130	
3	Choke coil(PFC)	L103	49	50	52	52	49	48	51	130	
4	Input capacitor	C113	31	39	33	35	37	32	39	105	
5	Rectified diode(Output)	D108	53	63	58	59	61	59	63	150	Junction Temp.
6	Transistor(PFC)	TR104	55	61	64	63	66	63	68	150	Junction Temp.
7	Switching transistor	TR201	59	67	67	69	70	66	70	150	Junction Temp.
8	Transformer	T101	46	55	48	55	52	57	60	130	
9	Rectified diode(Output)	SS501	73	74	57	63	51	65	49	150	Junction Temp.
10	Output Choke	L501	52	57	—	—	—	—	—	130	
11	Output Choke	L501	—	—	40	36	31	30	31	120	
12	Output Capacitor	C507	31	35	25	22	20	19	23	105	
13											
14											
15											
16											
17											
18											
19											
20											

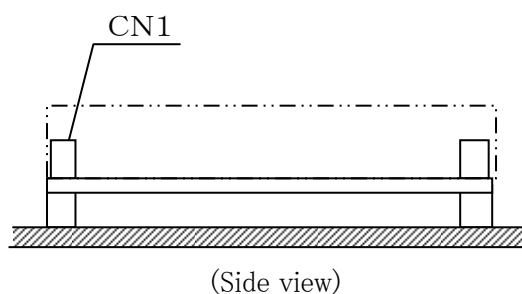


Fig.1.1 Mounting method
(Normal position)

*All information presented herein are not guaranteed.

*本資料は参考資料であり、その内容を保証するものではありません。