

Temperature increase of main components: 主要部品温度上昇

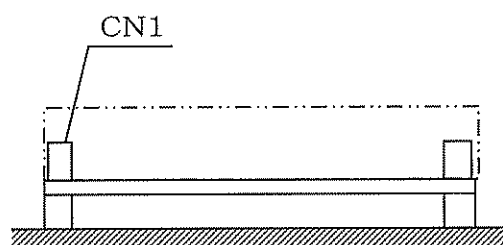
Model: LGA100A

1. Conditions

- (1) Input : AC 85 ~ 132 [V]
 (2) Output : Rated output
 (3) Mounting method : Shown as Fig.1.1

2. Result

No.	Parts name	Symbol No.	Increase (ΔT)						Rated temp. [°C]	Reference
			[deg]							
			5V	12V	24V					
1	Line Filter	L102	52	52	48				120	
2	Rectifier(Input)	SS101	68	65	65				150	Junction Temp.
3	Thyristor	SCR101	61	53	55				125	Junction Temp.
4	Input Capacitor	C111	36	33	32				105	
5	Input Capacitor	C112	38	35	34				105	
6	Transformer	T101	60	53	57				130	
7	Switching Transistor	TR201	68	69	68				150	Junction Temp.
8	Rectified Diode(Output)	SS501	77	73	60				150	Junction Temp.
9	Output Choke	L507	66	62	52				130	
10	Output Capacitor	C506	34	26	23				105	
11	Output Capacitor	C507	33	25	16				105	
12	Output Capacitor	C508	33	20	-				105	
13										
14										
15										
16										
17										
18										
19										
20										



(Side view)

Fig.1.1 Mounting method
(Normal position)

*All information presented herein are not guaranteed.

*本資料は参考資料であり、その内容を保証するものではありません。