

Temperature increase of main components: 主要部品温度上昇

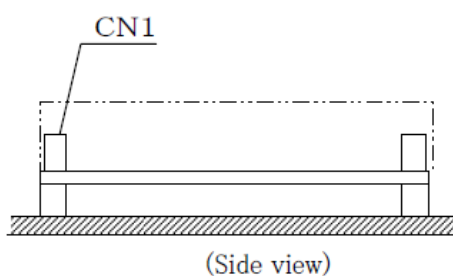
Model : LHA100F

1. Conditions

- (1) Input : AC 85 ~ 264 [V]
 (2) Output : Rated output *Derating is required at AC85~90[V] input.
 (3) Mounting method : Shown as Fig.1.1

2. Result

No.	Parts name	Symbol No.							Rated temp. [°C]	Reference
			5V	12V	15V	24V	36V	48V		
1	Line filter	L101	41	53	56	50	51	51	130	
2	Rectifier (Input)	SS101	71	78	79	79	80	76	150	Junction Temp.
3	Choke coil (PFC)	L104	47	54	53	53	53	50	130	
4	Rectified diode (PFC)	D101	57	63	57	58	58	58	150	Junction Temp.
5	Switching transistor (PFC)	TR101	57	59	59	61	58	55	150	Junction Temp.
6	Switching transistor	TR201	62	58	58	59	59	54	150	Junction Temp.
7	Capacitor (Input)	C124	35	34	29	29	30	32	105	
8	Transformer	T201	64	53	49	49	51	49	130	
9	Transistor (Output)	TR501	78	57	38	-	-	-	150	Junction Temp.
10	Rectifying Diode (Output)	SS501	-	-	-	53	54	52	150	Junction Temp.
11	Choke coil (Output)	L501	64	57	34	41	34	28	130	
12	Capacitor (Output)	C525	47	39	22	18	17	16	105	
13										
14										
15										
16										
17										
18										
19										
20										
21										
22										

Fig.1.1 Mounting method
(Normal position)

*All information presented herein are not guaranteed.

*本資料は参考資料であり、その内容を保証するものではありません。