

Temperature increase of main components: 主要部品温度上昇

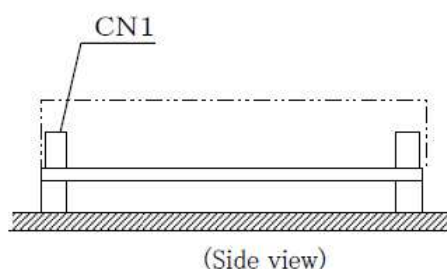
Model : LHA10F

1. Conditions

- (1) Input : AC 85 ~ 264 [V]
 (2) Output : Rated output *Derating is required at AC85~90[V] input.
 (3) Mounting method : Shown as Fig.1.1

2. Result

No.	Parts name	Symbol No.	Increase (ΔT) [deg]					Rated temp. [°C]	Reference
			3.3V	5V	12V	15V	24V		
1	Line filter	L101	25	42	42	37	47	130	
2	Rectifier (Input)	SS101	31	43	43	44	44	150	Junction Temp.
3	Capacitor (Input)	C201	17	24	25	20	20	105	
4	Transformer	T201	42	49	55	52	49	130	
5	Switching transistor	TR201	37	46	45	44	47	150	Junction Temp.
6	Output Diode	D501	67	72	60	52	43	150	Junction Temp.
7	Choke coil (Output)	L501	44	43	33	28	28	130	
8	Capacitor (Output)	C511	25	28	25	21	20	105	
9									
10									
11									
12									
13									
14									
15									
16									
17									
18									
19									
20									
21									

Fig.1.1 Mounting method
(Normal position)

*All information presented herein are not guaranteed.

*本資料は参考資料であり、その内容を保証するものではありません。