

Date : Sep.11,2019

Temperature increase of main components: 主要部品温度上昇

Model : LHA150F

1. Conditions

- (1) Input : AC 85 ~ 264 [V]
 (2) Output : Rated output *Derating is required at AC85~90[V] input.
 (3) Mounting method : Shown as Fig.1.1

2. Result

No.	Parts name	Symbol No.	Increase (ΔT) [deg]				Rated temp. [°C]	Reference
			12V	24V	36V	48V		
1	Line filter	L101	68	68	62	55	130	
2	Rectifier (Input)	SS101	70	62	57	50	150	Junction Temp.
3	Choke coil(PFC)	L103	65	68	62	54	130	
4	Transistor(PFC)	TR101	61	62	57	56	150	Junction Temp.
5	Input Capacitor	C128	35	40	33	33	105	
6	Switching transistor	TR209	76	73	61	44	150	Junction Temp.
7	Transformer	T201	56	58	52	52	130	
8	Capacitor	C208	26	25	18	18	105	
9	Rectifying Diode(Output)	SS502	81	51	49	39	150	Junction Temp.
10	Output Choke coil	L501	60	44	36	26	130	
11	Output Capacitor	C507	31	25	22	20	105	
12								
13								
14								
15								
16								
17								
18								
19								
20								

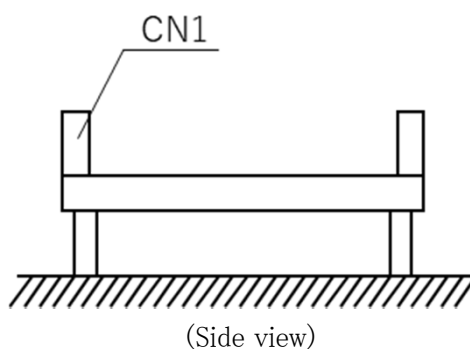


Fig.1.1 Mounting method
(Normal position)

*All information presented herein are not guaranteed.

*本資料は参考資料であり、その内容を保証するものではありません。