

Temperature increase of main components: 主要部品温度上昇

Model : LHA300F

1. Conditions

- (1) Input : AC 85 ~ 264 [V]
 (2) Output : Rated output *Derating is required at AC85~90[V] input.
 (3) Mounting method : Shown as Fig.1.1

2. Result

No.	Parts name	Symbol No.	Increase (ΔT) [deg]			Rated temp. [°C]	Reference
			12V	24V	48V		
1	Line filter	L101	47	40	40	130	
2	Rectifier (Input)	SS101	78	70	68	150	Junction Temp.
3	Choke coil(PFC)	L103	57	52	50	130	
4	Transistor(PFC)	TR101	73	67	67	150	Junction Temp.
5	Input Capacitor	C127	45	38	37	105	
6	Switching transisitor	TR208	50	45	45	150	Junction Temp.
7	Transformer	T201	70	51	48	130	
8	Capacitor	C208	45	43	35	105	
9	Rectifying MOS-FET(Output)	TR501	67	46	39	150	Junction Temp.
10	Output Capacitor	C507	47	27	22	105	
11	Output Choke coil	L501	52	26	17	130	
12							
13							
14							
15							
16							
17							
18							
19							
20							

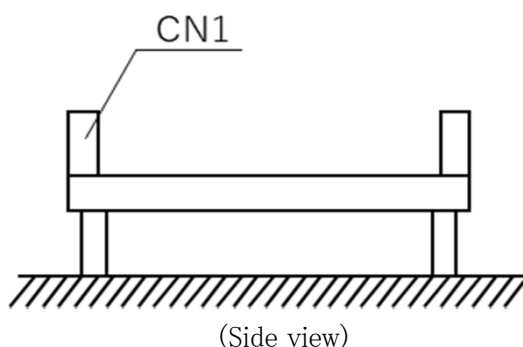


Fig.1.1 Mounting method
(Nomal position)

*All information presented herein are not guaranteed.

*本資料は参考資料であり、その内容を保証するものではありません。