

Temperature increase of main components: 主要部品温度上昇

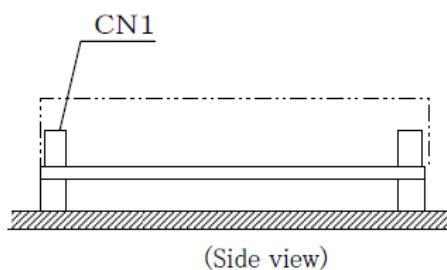
Model : LHA50F

1. Conditions

- (1) Input : AC 85 ~ 264 [V]
 (2) Output : Rated output *Derating is required at AC85~90[V] input.
 (3) Mounting method : Shown as Fig.1.1

2. Result

No.	Parts name	Symbol No.	Increase (ΔT) [deg]							Rated temp. [°C]	Reference
			3.3V	5V	12V	15V	24V	36V	48V		
1	Line filter	L101	25	45	57	59	56	58	50	120	
2	Rectifier (Input)	SS101	41	49	64	61	59	58	55	150	Junction Temp.
3	Capacitor (Input)	C201	19	27	29	29	28	31	26	105	
4	Transformer	T101	46	56	58	60	57	55	51	130	
5	Switching transisitor	TR201	35	48	61	60	59	63	61	150	Junction Temp.
6	Transisitor (Output)	TR501	63	63	47	-	-	-	-	150	Junction Temp.
7	Rectifying Diode (Output)	SS501	-	-	-	73	66	52	42	150	Junction Temp.
8	Choke coil (Output)	L501	54	61	42	58	43	32	26	125	
9	Capacitor (Output)	C501	36	38	29	37	25	24	19	105	
10											
11											
12											
13											
14											
15											
16											
17											
18											
19											
20											
21											

Fig.1.1 Mounting method
(Normal position)

*All information presented herein are not guaranteed.

*本資料は参考資料であり、その内容を保証するものではありません。