

Temperature increase of main components: 主要部品温度上昇

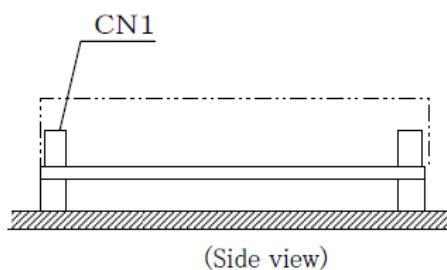
Model : LHA75F

1. Conditions

- (1) Input : AC 85 ~ 264 [V]
 (2) Output : Rated output *Derating is required at AC85~90[V] input.
 (3) Mounting method : Shown as Fig.1.1

2. Result

No.	Parts name	Symbol No.	Increase (ΔT) [deg]							Rated temp. [°C]	Reference
			3.3V	5V	12V	15V	24V	36V	48V		
1	Line filter	L101	27	41	45	50	51	47	49	120	
2	Rectifier (Input)	SS101	52	65	72	75	69	66	69	150	Junction Temp.
3	Choke coil (PFC)	L104	43	56	56	60	55	58	60	130	
4	Rectified diode (PFC)	D101	49	59	60	60	61	59	63	150	Junction Temp.
5	Switching transistor (PFC)	TR101	45	55	55	55	55	55	55	150	Junction Temp.
6	Switching transistor	TR201	49	59	59	58	58	56	59	150	Junction Temp.
7	Capacitor (Input)	C122	28	35	35	33	32	32	32	105	
8	Transformer	T201	60	68	54	47	48	44	51	130	
9	Rectifying Diode (Output)	SS501	80	86	65	54	55	45	42	150	Junction Temp.
10	Choke coil (Output)	L501	60	64	50	36	32	25	22	130	
11	Capacitor (Output)	C525	39	41	27	21	19	16	16	105	
12											
13											
14											
15											
16											
17											
18											
19											
20											
21											

Fig.1.1 Mounting method
(Normal position)

*All information presented herein are not guaranteed.

*本資料は参考資料であり、その内容を保証するものではありません。