

Temperature increase of main components: 主要部品温度上昇

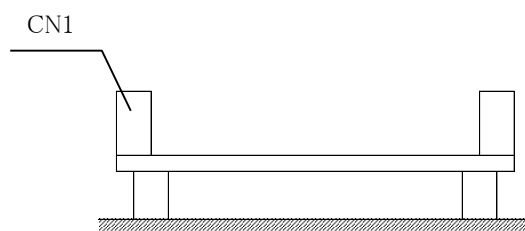
Model : LHP300F

1. Conditions

- (1) Input : 85 - 264 [VAC]
 (2) Output : Rated output *Derating is required at 85 - 90 [VAC] input.
 (3) Mounting method : Shown as Fig.1.1

2. Result

No.	Parts name	Symbol No.	Increase (ΔT) [deg]					Rated temp. [°C]	Reference
			24V	30V	36V	42V	48V		
1	Line filter	L101	44	41	40	39	39	130	
2	Rectifier (Input)	SS101	68	66	64	64	63	150	Junction Temp.
3	Choke coil (PFC)	L103	50	51	52	49	51	130	
4	Switching transistor (PFC)	TR101	69	67	67	65	67	150	Junction Temp.
5	Rectifying diode (PFC)	D101	67	63	65	63	64	175	Junction Temp.
6	Thyristor	SCR101	68	65	66	67	65	150	Junction Temp.
7	Capacitor (Input)	C122	31	30	32	30	30	105	
8	Switching transistor (DC/DC)	TR301	54	52	52	51	52	150	Junction Temp.
9	Transformer	T301	60	56	57	55	54	130	
10	Rectifying transistor (Output)	TR501	54	43	45	41	38	150	Junction Temp.
11	Capacitor (Output)	C502	34	27	26	23	23	105	
12									
13									
14									
15									
16									
17									
18									
19									
20									



(Side view)

Fig.1.1 Mounting method
(Normal position)

*All information presented herein are not guaranteed.

*本資料は参考資料であり、その内容を保証するものではありません。