

Temperature increase of main components: 主要部品温度上昇

LMA100F (Convection)

1. Conditions

- (1) Input : AC 85 ~ 264 [V]
 (2) Output : Rated output *Derating is required at AC85 - 90[V] input.
 (3) Mounting method : Shown as Fig.1.1

2. Result

No.	Parts name	Symbol No.	Increase (ΔT)				Rated temp. [°C]	Reference
			[deg]					
			24V					
1	Line filter	L101	35				130	
2	Line filter	L102	41				130	
3	Rectifier(Input)	SS101	62				150	Junction Temp.
4	Choke coil(PFC)	L104	60				130	
5	Input capacitor	C127	34				105	
6	Rectified diode(PFC)	D101	61				150	Junction Temp.
7	Transistor(PFC)	TR101	60				150	Junction Temp.
8	Switching transistor	TR201	67				150	Junction Temp.
9	Transformer	T201	63				130	
10	Rectified Diode(Output)	SS502	51				150	Junction Temp.
11	Output Choke	L507	45				130	
12	Output Capacitor	C513	24				105	
13								
14								
15								
16								
17								
18								
19								
20								

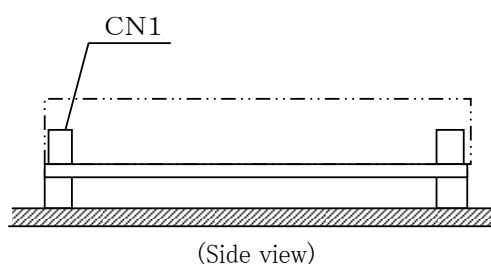


Fig.1.1 Mounting method
(Normal position)

*All information presented herein are not guaranteed.

*本資料は参考資料であり、その内容を保証するものではありません。