

Temperature increase of main components: 主要部品温度上昇

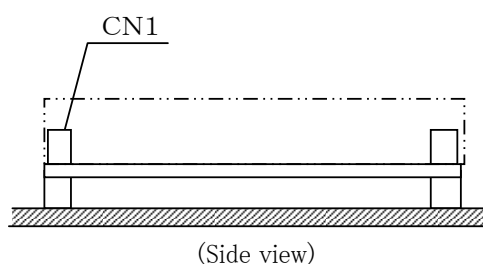
LMA150F (Convection)

1. Conditions

- (1) Input : AC 85 ~ 264 [V]
 (2) Output : Rated output *Derating is required at AC85 - 90[V] input.
 (3) Mounting method : Shown as Fig.1.1

2. Result

No.	Parts name	Symbol No.	Increase (ΔT)				Rated temp. [°C]	Reference
			[deg]					
			24V					
1	Line filter	L101	51				130	
2	Line filter	L102	45				130	
3	Rectifier(Input)	SS101	66				150	Junction Temp.
4	Choke coil(PFC)	L104	60				130	
5	Input capacitor	C127	62				105	
6	Rectified diode(PFC)	D101	59				150	Junction Temp.
7	Transistor(PFC)	TR101	67				150	Junction Temp.
8	Switching transistor	TR201	68				150	Junction Temp.
9	Transformer	T201	68				130	
10	Rectified Diode(Output)	SS502	54				150	Junction Temp.
11	Output Choke	L507	49				130	
12	Output Capacitor	C513	20				105	
13								
14								
15								
16								
17								
18								
19								
20								



(Side view)

Fig.1.1 Mounting method
(Normal position)

*All information presented herein are not guaranteed.

*本資料は参考資料であり、その内容を保証するものではありません。