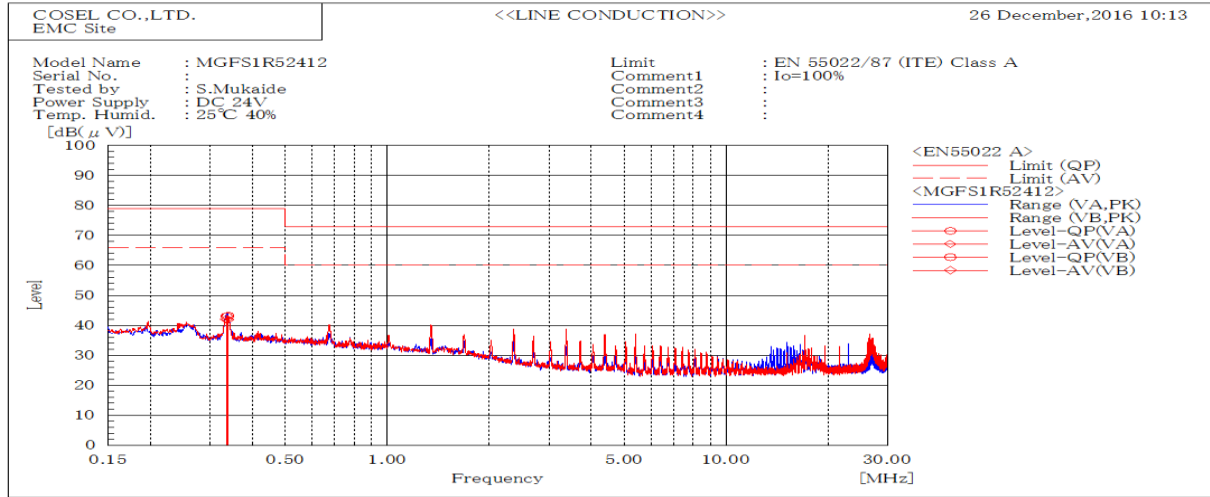
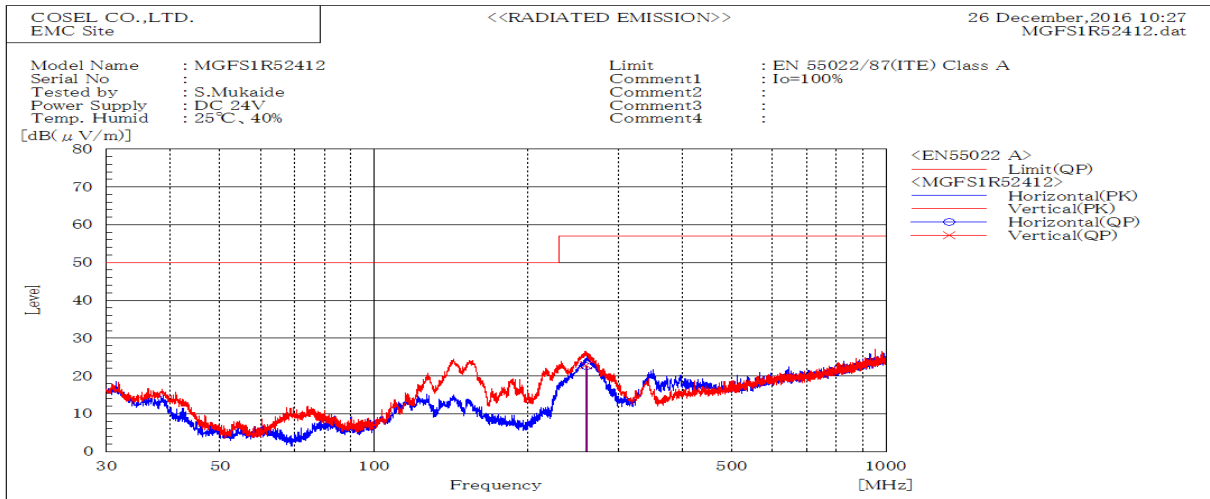


DATA SHEET		Date	06-Jan-17
Model	MGFS1R52412	Temp.	25 degreeC
Test	EMI Line conduction & Radiated emission	Humid.	40 %RH
		Tested by	S.Mukaide



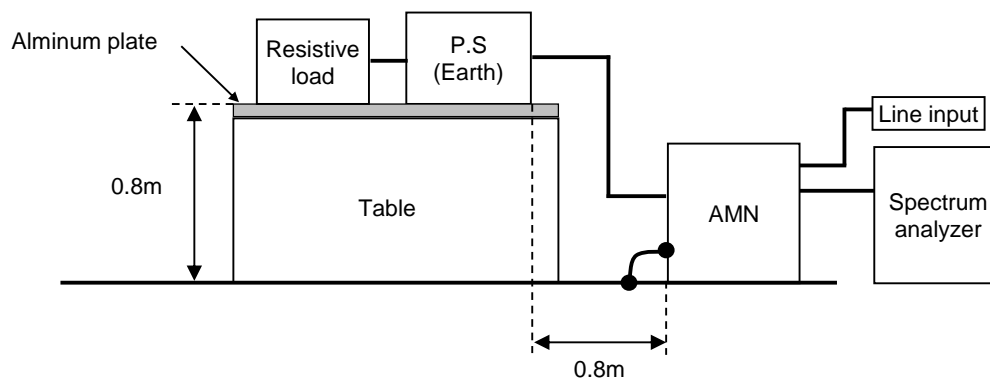
Frequency MHz	Line Phase	Level dB(μV)		Limit dB(μV)		Margin dB		Pass/Fail	Remark
		QP	AV	QP	AV	QP	AV		
0.33896	VB	43.2	41.8	79	66	35.8	24.2	Pass	
0.33517	VA	43	42	79	66	36	24	Pass	



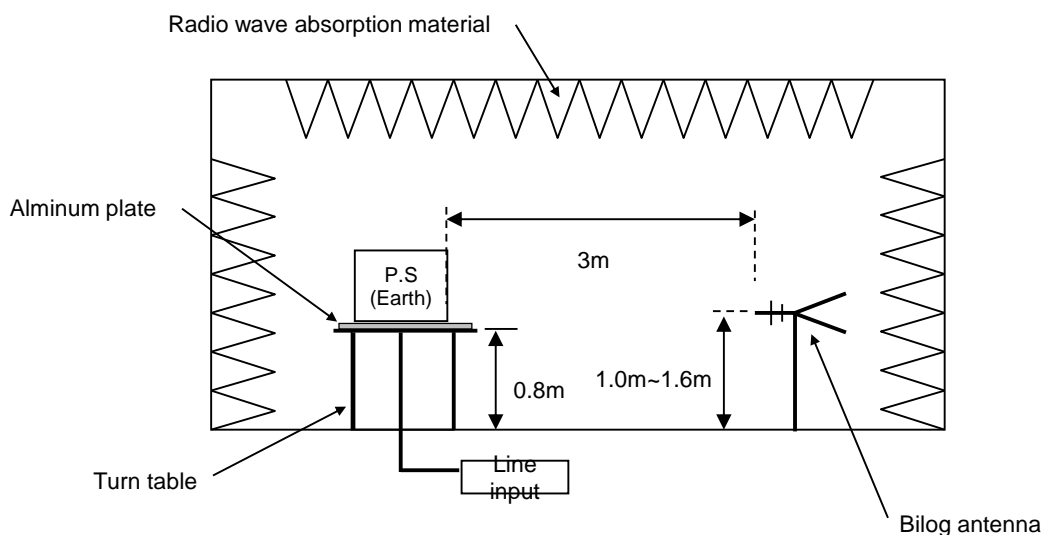
Frequency MHz	Polarization	Stability	Reading dB(μV)	Limit dB(μV/m)	Margin dB(μV/m)	Pass/Fail	Height cm	Angle deg	Remark
			QP	QP	QP				
259.297	V	Stable	22.8	57.0	34.2	Pass	115	48	
260.201	H	Stable	22.6	57.0	34.4	Pass	112	328	

DATA SHEET		Date	06-Jan-17
Model	Circuit used for measurement	Temp.	25 degreeC
Test	EMI Line conduction & Radiated emission	Humid.	40 %RH
		Tested by	S.Mukaide

## 1. Line conduction



## 2. Radiated emission

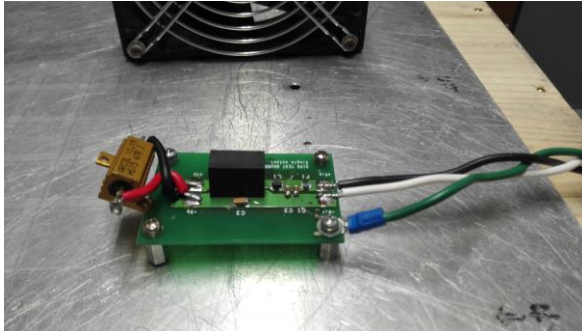


## Conditions

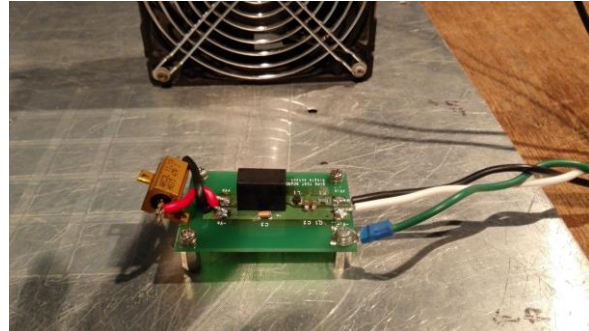
Test : EMI  
Model Name : MGFS1R5□□

○Photographs of Test Set-Up

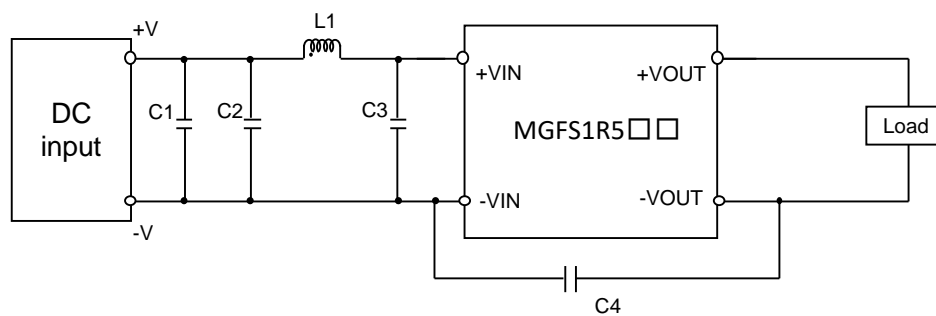
### LINE CONDUCTION



### RADIATED EMISSION



○Testing circuitry



- |      |             |  |
|------|-------------|--|
| C1 : | MGFS1R524□□ | 50V 4.7 $\mu$ F Ceramic capacitor (GRM31CR71H475K MURATA MANUFACTURING)  |
|      | MGFS1R548□□ | 100V 2.2 $\mu$ F Ceramic capacitor (GRM31CR72A225K MURATA MANUFACTURING) |
| C2 : | MGFS1R524□□ | 50V 4.7 $\mu$ F Ceramic capacitor (GRM31CR71H475K MURATA MANUFACTURING)  |
|      | MGFS1R548□□ | 100V 2.2 $\mu$ F Ceramic capacitor (GRM31CR72A225K MURATA MANUFACTURING) |
| C3 : | MGFS1R524□□ | 50V 4.7 $\mu$ F Ceramic capacitor (GRM31CR71H475K MURATA MANUFACTURING)  |
|      | MGFS1R548□□ | 100V 2.2 $\mu$ F Ceramic capacitor (GRM31CR72A225K MURATA MANUFACTURING) |
| C4 : | MGFS1R524□□ | 2kV 470pF Ceramic capacitor (GR442QR73D471K MURATA MANUFACTURING)        |
|      | MGFS1R548□□ | 2kV 1000pF Ceramic capacitor (GR442QR73D102K MURATA MANUFACTURING)       |
| L1 : | MGFS1R524□□ | 900mA 10 $\mu$ H Inductor(LQH32PN100MNCL MURATA MANUFACTURING)           |
|      | MGFS1R548□□ | 550mA 22 $\mu$ H Inductor(LQH32PN220MNCL MURATA MANUFACTURING)           |