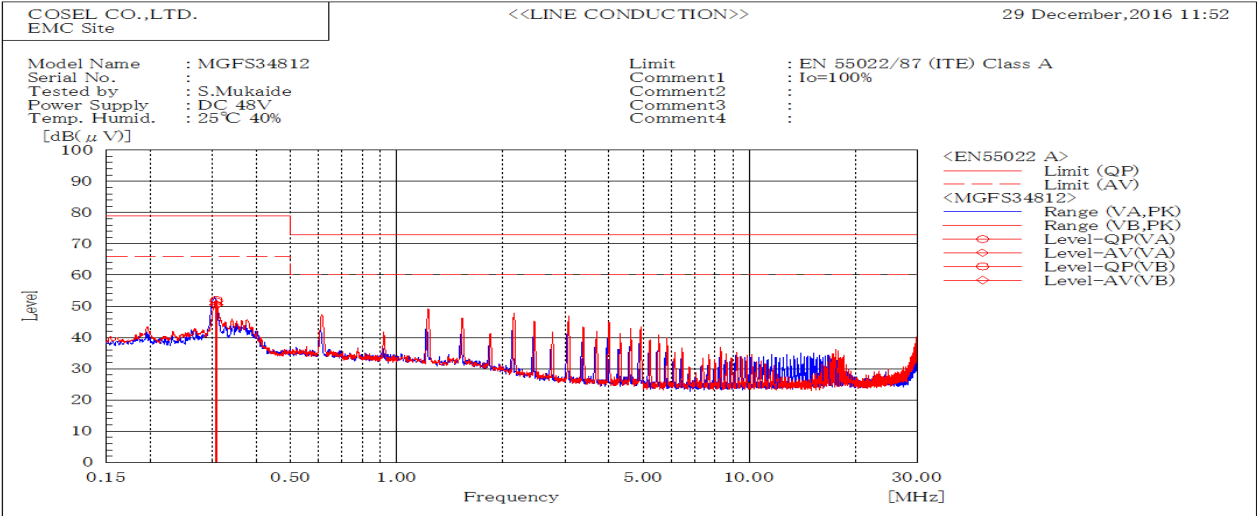
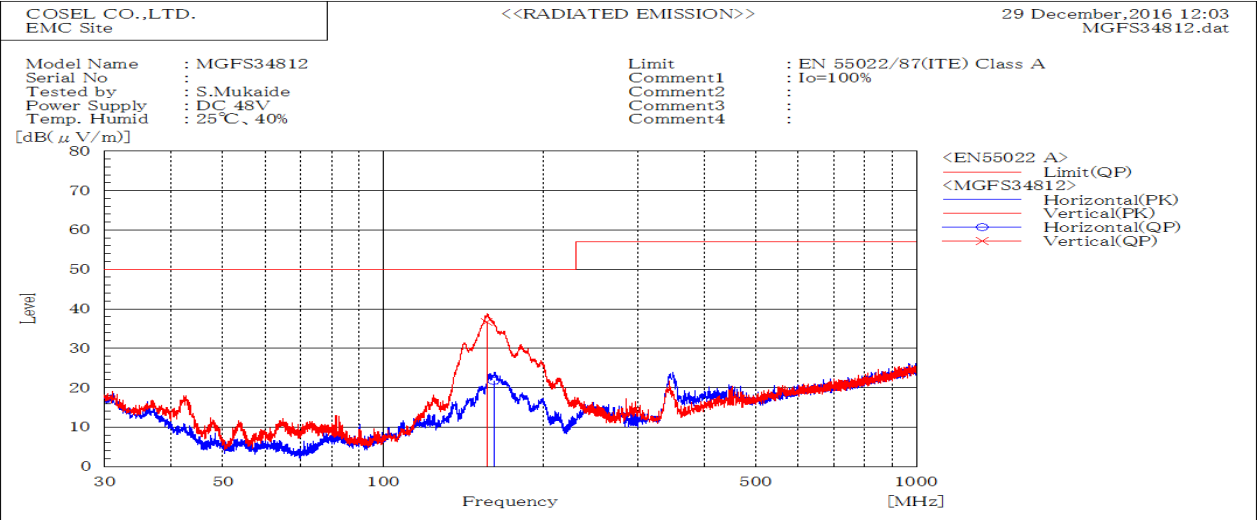


DATA SHEET		Date	06-Jan-17
Model	MGFS34812	Temp.	25 degreeC
Test	EMI Line conduction & Radiated emission	Humid.	40 %RH
		Tested by	S.Mukaide



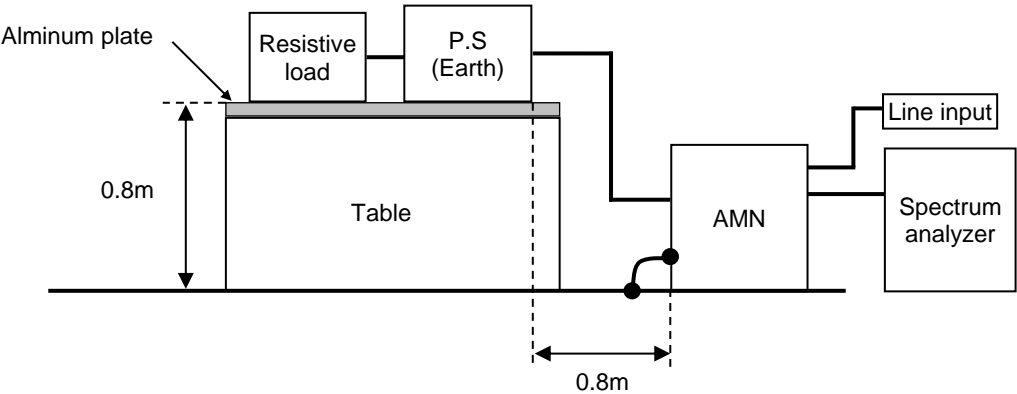
Frequency MHz	Line Phase	Level dB(μV)		Limit dB(μV)		Margin dB		Pass/Fail	Remark
		QP	AV	QP	AV	QP	AV		
0.30756	VA	51.4	50.6	79	66	27.6	15.4	Pass	
0.30772	VB	52	50.4	79	66	27	15.6	Pass	



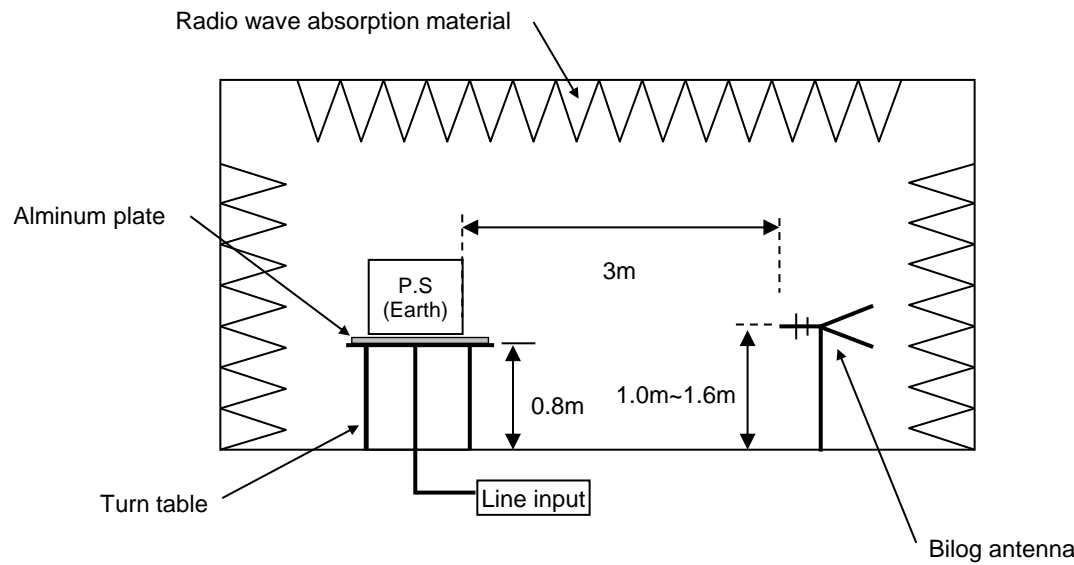
Frequency MHz	Polarization	Stability	Reading dB(μV)	Limit dB(μV/m)	Margin dB(μV/m)	Pass/Fail	Height cm	Angle deg	Remark
			QP	QP	QP				
156.296	V	Stable	36.7	50.0	13.3	Pass	114	77	
161.027	H	Stable	21.7	50.0	28.3	Pass	154	71	

DATA SHEET		Date	06-Jan-17
Model	Circuit used for measurement	Temp.	25 degreeC
Test	EMI Line conduction & Radiated emission	Humid.	40 %RH
		Tested by	S.Mukaide

1. Line conduction



2. Radiated emission

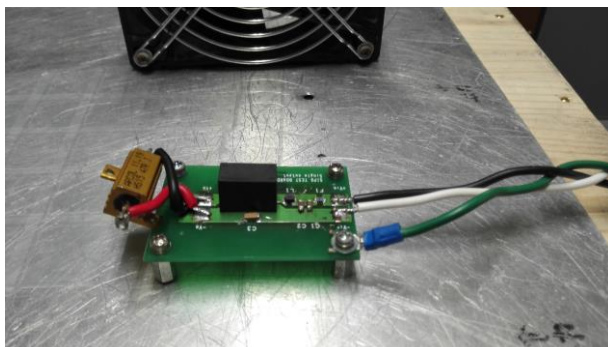


## Conditions

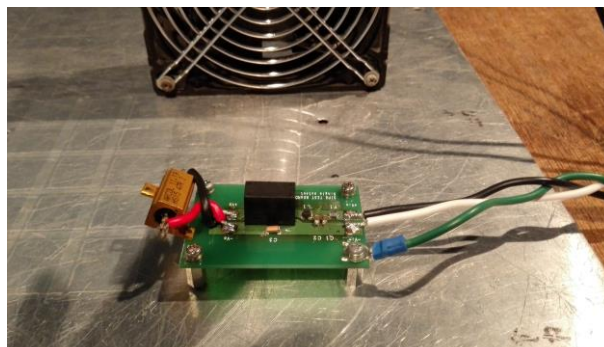
Test : EMI  
Model Name : MGFS3□□

○Photographs of Test Set-Up

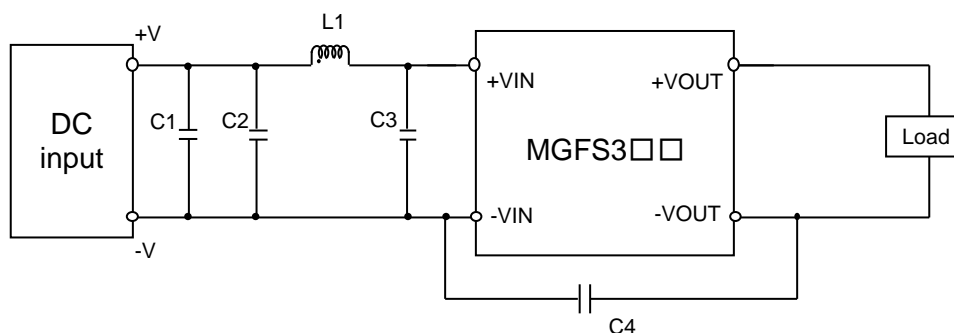
### LINE CONDUCTION



### RADIATED EMISSION



○Testing circuitry



C1 :	MGFS324□□	50V 4.7 $\mu$ F Ceramic capacitor (GRM31CR71H475K MURATA MANUFACTURING)
	MGFS348□□	100V 2.2 $\mu$ F Ceramic capacitor (GRM31CR72A225K MURATA MANUFACTURING)
C2 :	MGFS324□□	50V 4.7 $\mu$ F Ceramic capacitor (GRM31CR71H475K MURATA MANUFACTURING)
	MGFS348□□	100V 2.2 $\mu$ F Ceramic capacitor (GRM31CR72A225K MURATA MANUFACTURING)
C3 :	MGFS324□□	50V 4.7 $\mu$ F Ceramic capacitor (GRM31CR71H475K MURATA MANUFACTURING)
	MGFS348□□	100V 2.2 $\mu$ F Ceramic capacitor (GRM31CR72A225K MURATA MANUFACTURING)
C4 :	MGFS324□□	2kV 470pF Ceramic capacitor (GR442QR73D471K MURATA MANUFACTURING)
	MGFS348□□	2kV 1000pF Ceramic capacitor (GR442QR73D102K MURATA MANUFACTURING)
L1 :	MGFS324□□	900mA 10 $\mu$ H Inductor(LQH32PN100MNCL MURATA MANUFACTURING)
	MGFS348□□	550mA 22 $\mu$ H Inductor(LQH32PN220MNCL MURATA MANUFACTURING)