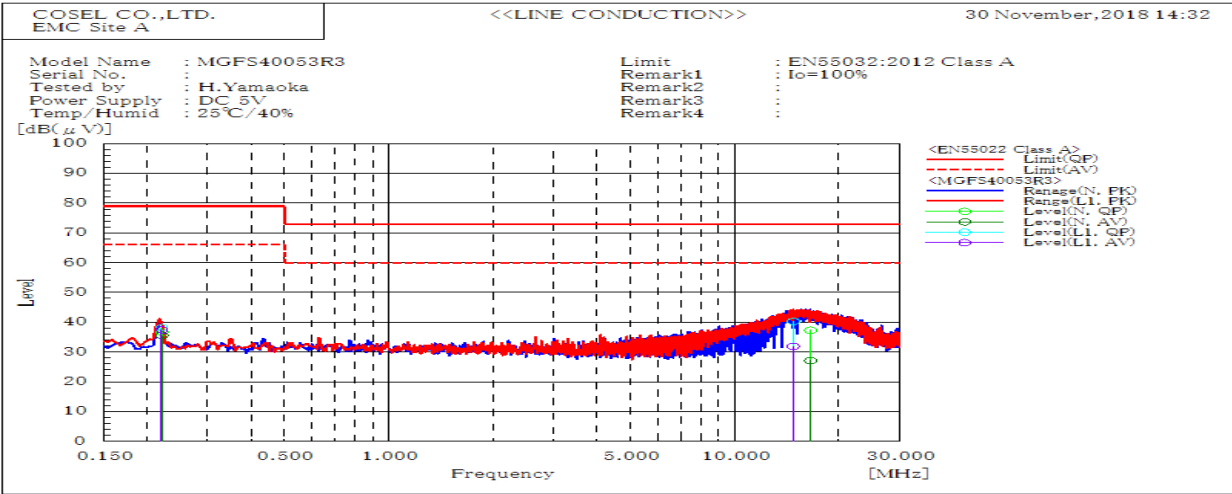
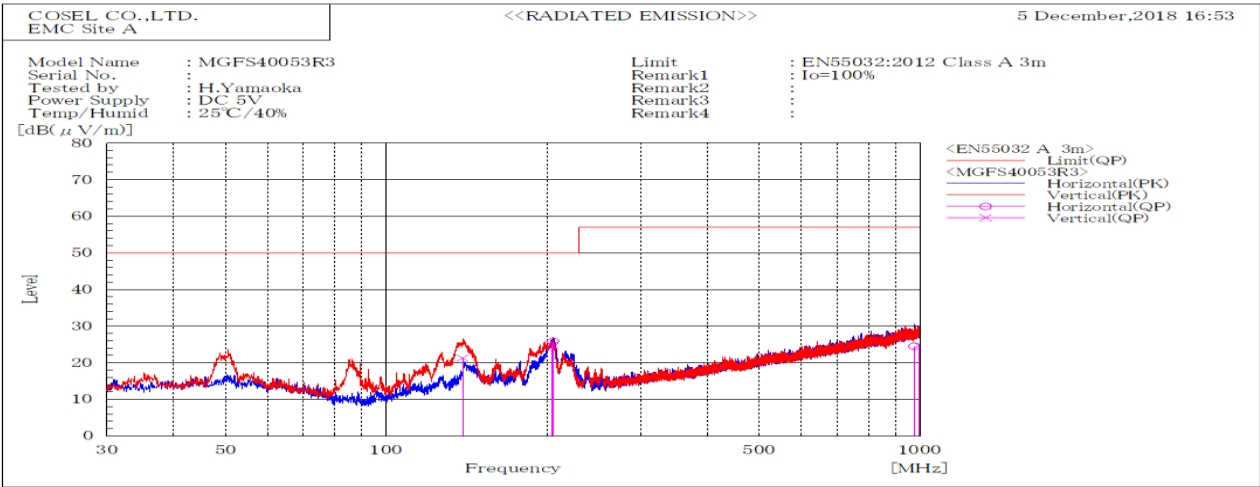


DATA SHEET		Date	15-Jan-19
Model	MGFS40053R3	Temp.	25 degreeC
Test	EMI Line conduction & Radiated emission	Humid.	40 %RH
		Tested by	H.Yamaoka



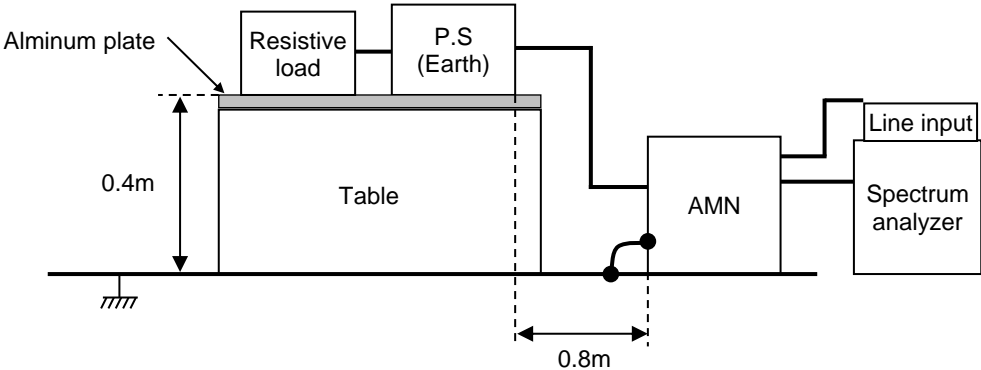
Frequency	Line	Level		Limit		Margin		Pass/Fail	Remark
MHz		dB(μV)		dB(μV)		dB			
		QP	AV	QP	AV	QP	AV		
14.748	L1	40.3	32	73	60	32.7	28	Pass	
0.221	L1	38.2	37.5	79	66	40.8	28.5	Pass	
16.551	N	37.3	27.1	73	60	35.7	32.9	Pass	
0.221	N	36.6	35.6	79	66	42.4	30.4	Pass	



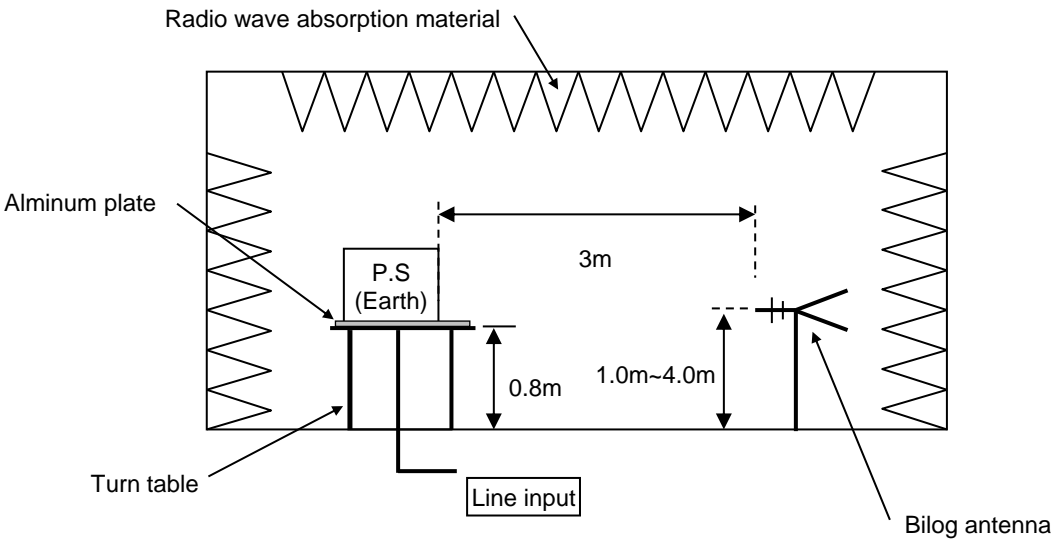
Frequency MHz	Polarization	Stability	Level	Limit	Margin	Pass/Fail	Height cm	Angle deg	Remark
			dB(μV/m) QP	dB(μV/m) QP	dB QP				
996.699	V	Stable	24.7	57	32.3	Pass	161.8	70.6	
139.16	V	Stable	21.2	50	28.8	Pass	101.4	0.2	
976.104	H	Stable	24.5	57	32.5	Pass	316.2	9	
205.396	H	Stable	25.8	50	24.2	Pass	164.4	197.6	
204.404	V	Stable	24.8	50	25.2	Pass	100	197.3	

DATA SHEET		Date	15-Jan-19
Model	Circuit used for measurement	Temp.	25 degreeC
Test	EMI Line conduction & Radiated emission	Humid.	40 %RH
		Tested by	H.Yamaoka

1. Line conduction



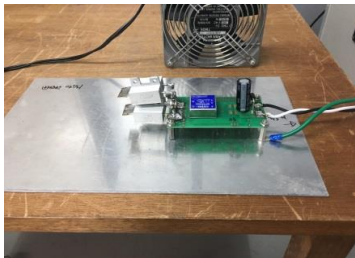
2. Radiated emission



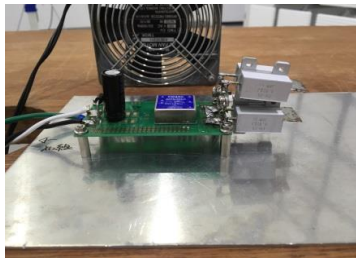
Conditions

Test : EMI
Model Name : MGFS40□□

○Photographs of Test Set-Up
LINE CONDUCTION



RADIATED EMISSION



○Testing circuitry

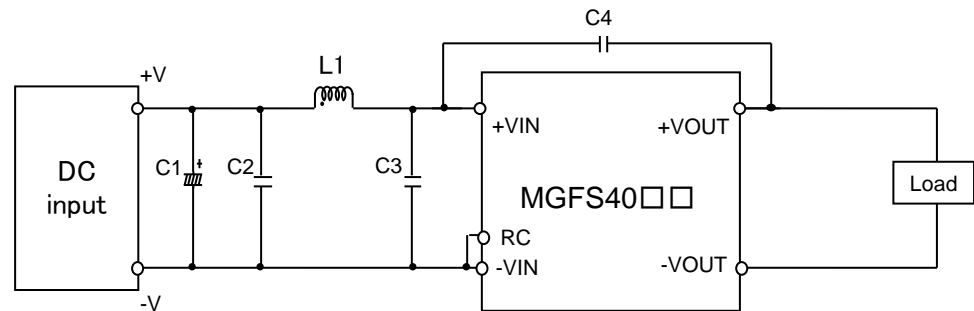


Fig.1 Testing circuitry

C1 :	MGFS4005□□	10V 4700μ F Electrolytic capacitor (UHWseries NICHICON CORPORATION)
	MGFS4024□□	63V 220μ F Electrolytic capacitor (KYseries NIPPON CHEMI-CON)
	MGFS4048□□	100V 220μ F Electrolytic capacitor (KYseries NIPPON CHEMI-CON)
C2 :	MGFS4005□□	16V 22μ F Ceramic capacitor (GRM32ER71C226K MURATA MANUFACTURING)
	MGFS4024□□	50V 10μ F Ceramic capacitor (GRM32ER71H106K MURATA MANUFACTURING)
	MGFS4048□□	100V 4.7μ F Ceramic capacitor (HMK325AC7475K TAIYOU YUDEN)
C3 :	MGFS4005□□	16V 22μ F Ceramic capacitor (GRM32ER71C226K MURATA MANUFACTURING)
	MGFS4024□□	50V 10μ F Ceramic capacitor (GRM32ER71H106K MURATA MANUFACTURING)
	MGFS4048□□	100V 4.7μ F Ceramic capacitor (HMK325AC7475K TAIYOU YUDEN)
C4 :	MGFS4005□□	2kV 1000pF Ceramic capacitor (GR431BR7LA102K MURATA MANUFACTURING)
	MGFS4024□□	2kV 1000pF Ceramic capacitor (GR431BR7LA102K MURATA MANUFACTURING)
	MGFS4048□□	2kV 1000pF Ceramic capacitor (GR431BR7LA102K MURATA MANUFACTURING)
L1 :	MGFS4005□□	15.0A 1.0μ H Inductor (SRP7050TA-1R0M BOURNS)
	MGFS4024□□	12.0A 1.8μ H Inductor (SRP7050TA-1R8M BOURNS)
	MGFS4048□□	6.0A 5.6μ H Inductor (SRP7050TA-5R6M BOURNS)