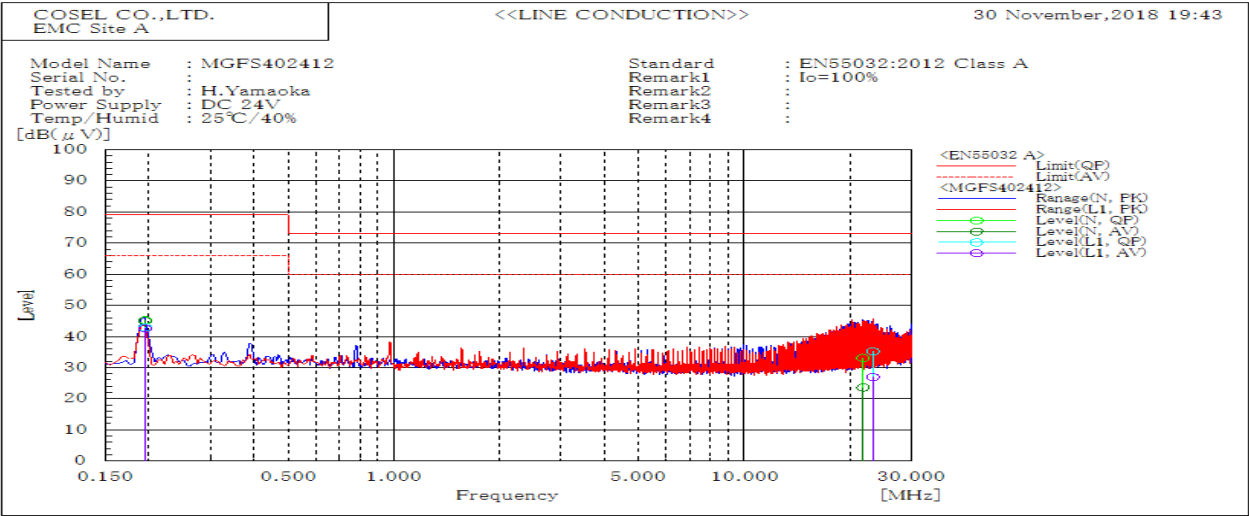
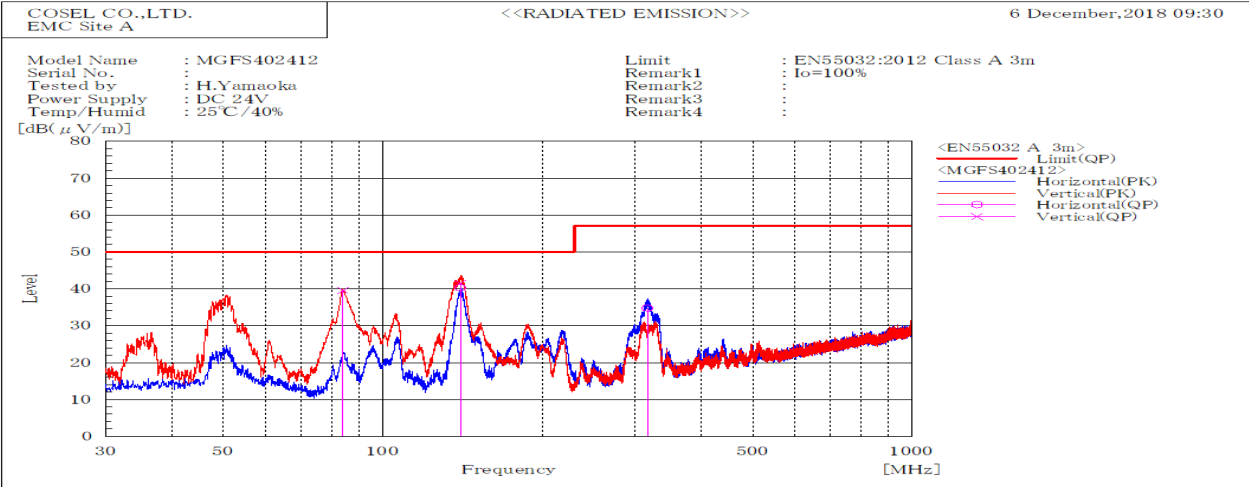


DATA SHEET		Date	15-Jan-19
Model	MGFS402412	Temp.	25 degreeC
Test	EMI Line conduction & Radiated emission	Humid.	40 %RH
		Tested by	H.Yamaoka



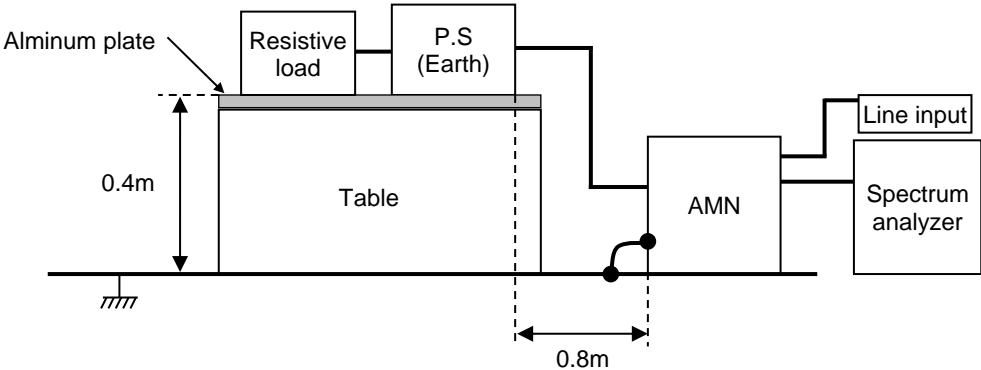
Frequency MHz	Line	Level dB(μV)		Limit dB(μV)		Margin dB		Pass/Fail	Remark
		QP	AV	QP	AV	QP	AV		
23.269	L1	35.2	26.9	73	60	37.8	33.1	Pass	
0.195	L1	42.8	42.5	79	66	36.2	23.5	Pass	
0.195	N	45.2	45	79	66	33.8	21	Pass	
21.818	N	33.1	23.6	73	60	39.9	36.4	Pass	



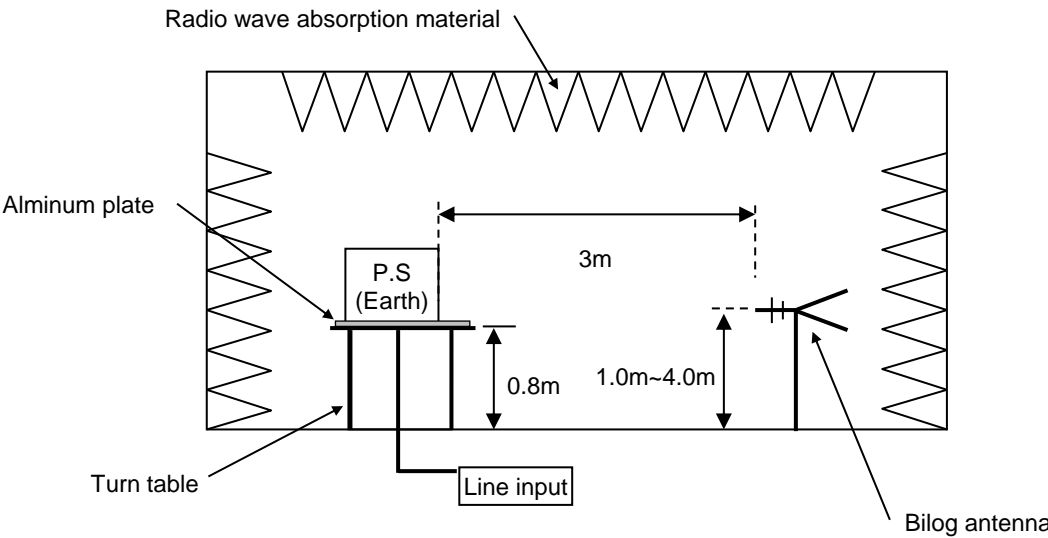
Frequency MHz	Polarization	Stability	Level dB(μV/m)		Limit dB(μV/m)	Margin dB	Pass/Fail	Height cm	Angle deg	Remark
			QP	QP						
140.263	V	Stable	41.6	50	8.4	Pass	101.4	207.6		
84.09	V	Stable	39.6	50	10.4	Pass	100	1.4		
140.276	H	Stable	40.3	50	9.7	Pass	222	12.3		
315.801	H	Stable	34.8	57	22.2	Pass	103.4	210.9		

DATA SHEET		Date	15-Jan-19
Model	Circuit used for measurement	Temp.	25 degreeC
Test	EMI	Humid.	40 %RH
	Line conduction & Radiated emission	Tested by	H.Yamaoka

1. Line conduction



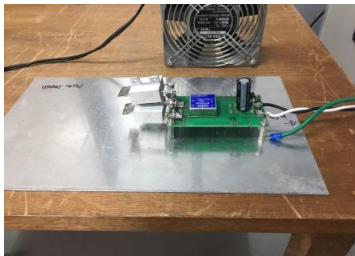
2. Radiated emission



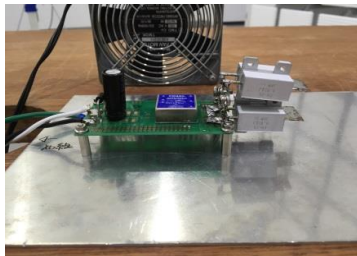
Conditions

Test : EMI
Model Name : MGFS40□□

○Photographs of Test Set-Up
LINE CONDUCTION



RADIATED EMISSION



○Testing circuitry

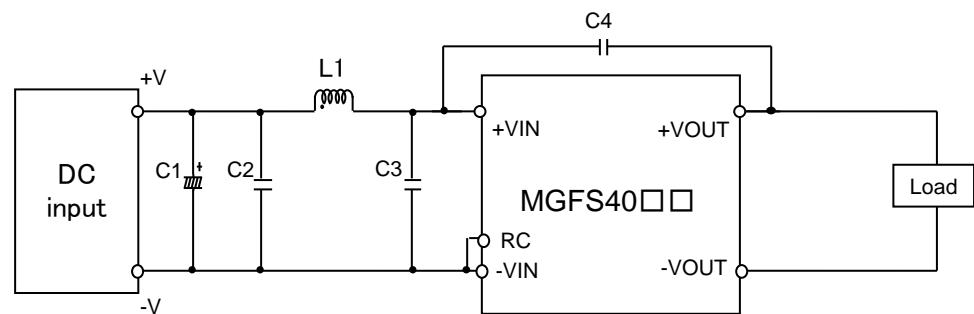


Fig.1 Testing circuitry

C1 :	MGFS4005□□	10V 4700μ F Electrolytic capacitor (UHWseries NICHICON CORPORATION)
	MGFS4024□□	63V 220μ F Electrolytic capacitor (KYseries NIPPON CHEMI-CON)
	MGFS4048□□	100V 220μ F Electrolytic capacitor (KYseries NIPPON CHEMI-CON)
C2 :	MGFS4005□□	16V 22μ F Ceramic capacitor (GRM32ER71C226K MURATA MANUFACTURING)
	MGFS4024□□	50V 10μ F Ceramic capacitor (GRM32ER71H106K MURATA MANUFACTURING)
	MGFS4048□□	100V 4.7μ F Ceramic capacitor (HMK325AC7475K TAIYOU YUDEN)
C3 :	MGFS4005□□	16V 22μ F Ceramic capacitor (GRM32ER71C226K MURATA MANUFACTURING)
	MGFS4024□□	50V 10μ F Ceramic capacitor (GRM32ER71H106K MURATA MANUFACTURING)
	MGFS4048□□	100V 4.7μ F Ceramic capacitor (HMK325AC7475K TAIYOU YUDEN)
C4 :	MGFS4005□□	2kV 1000pF Ceramic capacitor (GR431BR7LA102K MURATA MANUFACTURING)
	MGFS4024□□	2kV 1000pF Ceramic capacitor (GR431BR7LA102K MURATA MANUFACTURING)
	MGFS4048□□	2kV 1000pF Ceramic capacitor (GR431BR7LA102K MURATA MANUFACTURING)
L1 :	MGFS4005□□	15.0A 1.0μ H Inductor (SRP7050TA-1R0M BOURNS)
	MGFS4024□□	12.0A 1.8μ H Inductor (SRP7050TA-1R8M BOURNS)
	MGFS4048□□	6.0A 5.6μ H Inductor (SRP7050TA-5R6M BOURNS)