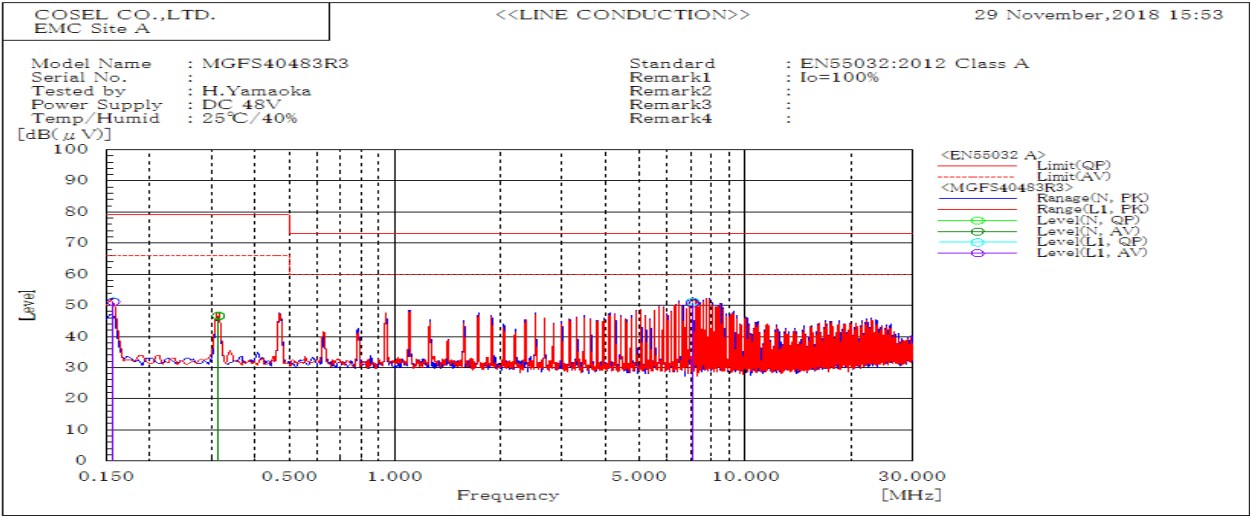
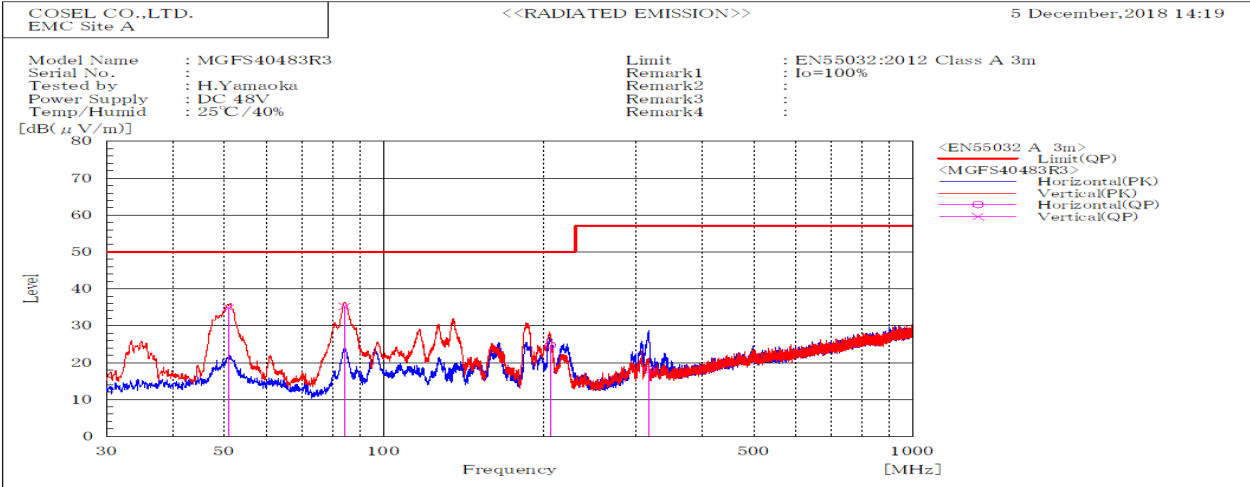


| DATA SHEET | | Date | 15-Jan-19 |
|------------|--|-----------|------------|
| Model | MGFS40483R3 | Temp. | 25 degreeC |
| Test | EMI Line conduction & Radiated emission | Humid. | 40 %RH |
| | | Tested by | H.Yamaoka |



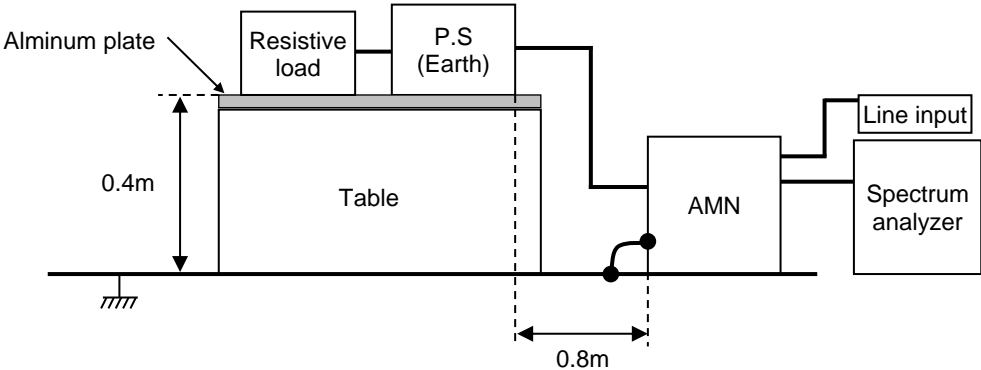
| Frequency MHz | Line | Level dB(μV) | | Limit dB(μV) | | Margin dB | | Pass/Fail | Remark |
|------------------|------|-----------------|------|-----------------|----|--------------|------|-----------|--------|
| | | QP | AV | QP | AV | QP | AV | | |
| 7.076 | L1 | 51.2 | 50.7 | 73 | 60 | 21.8 | 9.3 | Pass | |
| 0.157 | L1 | 51.2 | 51.2 | 79 | 66 | 27.8 | 14.8 | Pass | |
| 7.073 | N | 51.2 | 50.7 | 73 | 60 | 21.8 | 9.3 | Pass | |
| 0.314 | N | 46.7 | 46.5 | 79 | 66 | 32.3 | 19.5 | Pass | |



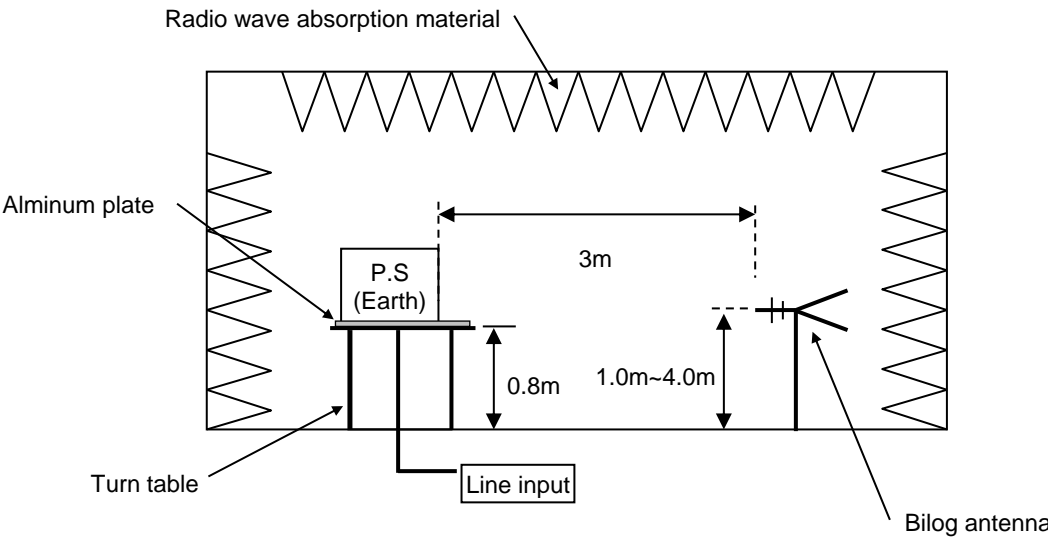
| Frequency MHz | Polarization | Stability | Level dB(μV/m) | | Limit dB(μV/m) | Margin dB | Pass/Fail | Height cm | Angle deg | Remark |
|------------------|--------------|-----------|-------------------|----|-------------------|--------------|-----------|--------------|--------------|--------|
| | | | QP | QP | | | | | | |
| 84.335 | V | Stable | 35.3 | 50 | 14.7 | Pass | 100.2 | 0 | | |
| 50.975 | V | Stable | 34.9 | 50 | 15.1 | Pass | 100.2 | 311.8 | | |
| 317.704 | H | Stable | 18.2 | 57 | 38.8 | Pass | 100.2 | 319.6 | | |
| 206.31 | H | Stable | 24.8 | 50 | 25.2 | Pass | 164.6 | 181.9 | | |

| DATA SHEET | | Date | 15-Jan-19 |
|------------|-------------------------------------|-----------|------------|
| Model | Circuit used for measurement | Temp. | 25 degreeC |
| Test | EMI | Humid. | 40 %RH |
| | Line conduction & Radiated emission | Tested by | H.Yamaoka |

1. Line conduction



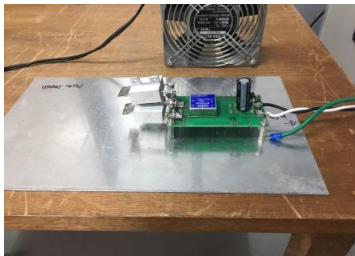
2. Radiated emission



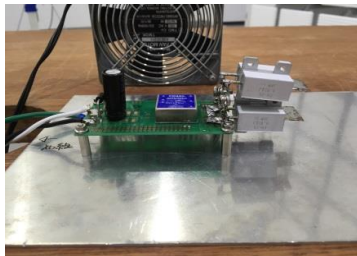
Conditions

Test : EMI
Model Name : MGFS40□□

○Photographs of Test Set-Up
LINE CONDUCTION



RADIATED EMISSION



○Testing circuitry

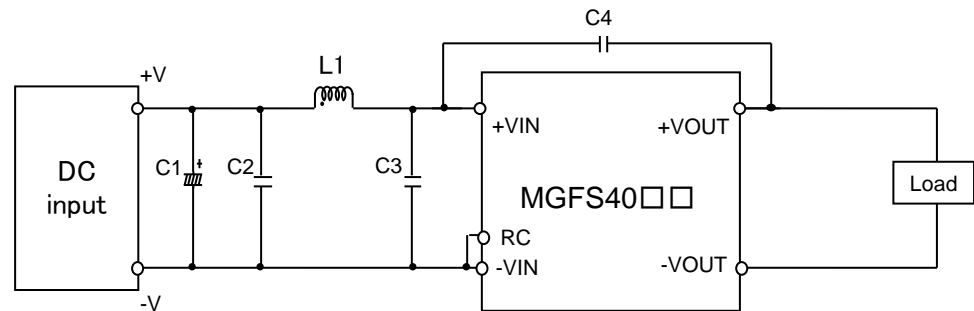


Fig.1 Testing circuitry

| | | |
|------|------------|---|
| C1 : | MGFS4005□□ | 10V 4700μ F Electrolytic capacitor (UHWseries NICHICON CORPORATION) |
| | MGFS4024□□ | 63V 220μ F Electrolytic capacitor (KYseries NIPPON CHEMI-CON) |
| | MGFS4048□□ | 100V 220μ F Electrolytic capacitor (KYseries NIPPON CHEMI-CON) |
| C2 : | MGFS4005□□ | 16V 22μ F Ceramic capacitor (GRM32ER71C226K MURATA MANUFACTURING) |
| | MGFS4024□□ | 50V 10μ F Ceramic capacitor (GRM32ER71H106K MURATA MANUFACTURING) |
| | MGFS4048□□ | 100V 4.7μ F Ceramic capacitor (HMK325AC7475K TAIYOU YUDEN) |
| C3 : | MGFS4005□□ | 16V 22μ F Ceramic capacitor (GRM32ER71C226K MURATA MANUFACTURING) |
| | MGFS4024□□ | 50V 10μ F Ceramic capacitor (GRM32ER71H106K MURATA MANUFACTURING) |
| | MGFS4048□□ | 100V 4.7μ F Ceramic capacitor (HMK325AC7475K TAIYOU YUDEN) |
| C4 : | MGFS4005□□ | 2kV 1000pF Ceramic capacitor (GR431BR7LA102K MURATA MANUFACTURING) |
| | MGFS4024□□ | 2kV 1000pF Ceramic capacitor (GR431BR7LA102K MURATA MANUFACTURING) |
| | MGFS4048□□ | 2kV 1000pF Ceramic capacitor (GR431BR7LA102K MURATA MANUFACTURING) |
| L1 : | MGFS4005□□ | 15.0A 1.0μ H Inductor (SRP7050TA-1R0M BOURNS) |
| | MGFS4024□□ | 12.0A 1.8μ H Inductor (SRP7050TA-1R8M BOURNS) |
| | MGFS4048□□ | 6.0A 5.6μ H Inductor (SRP7050TA-5R6M BOURNS) |