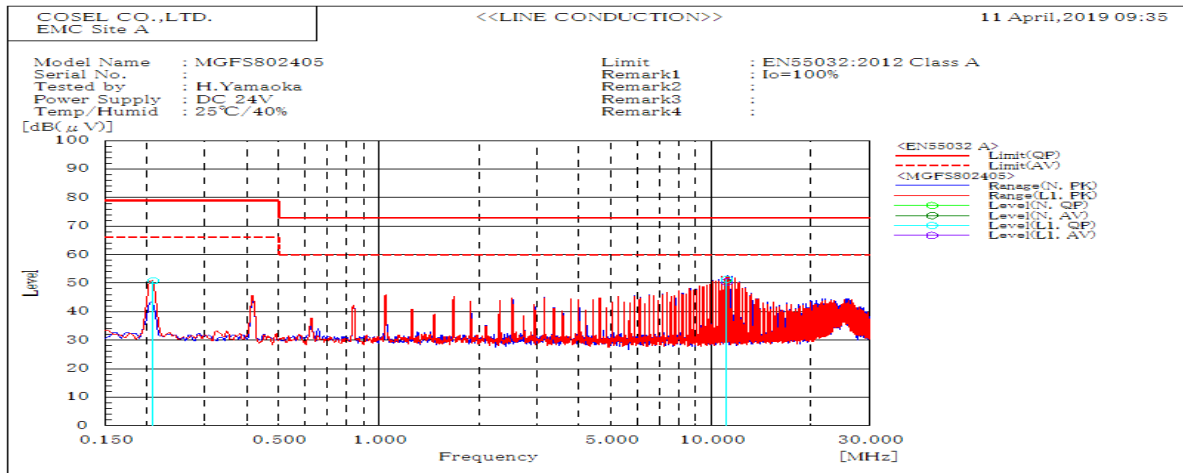
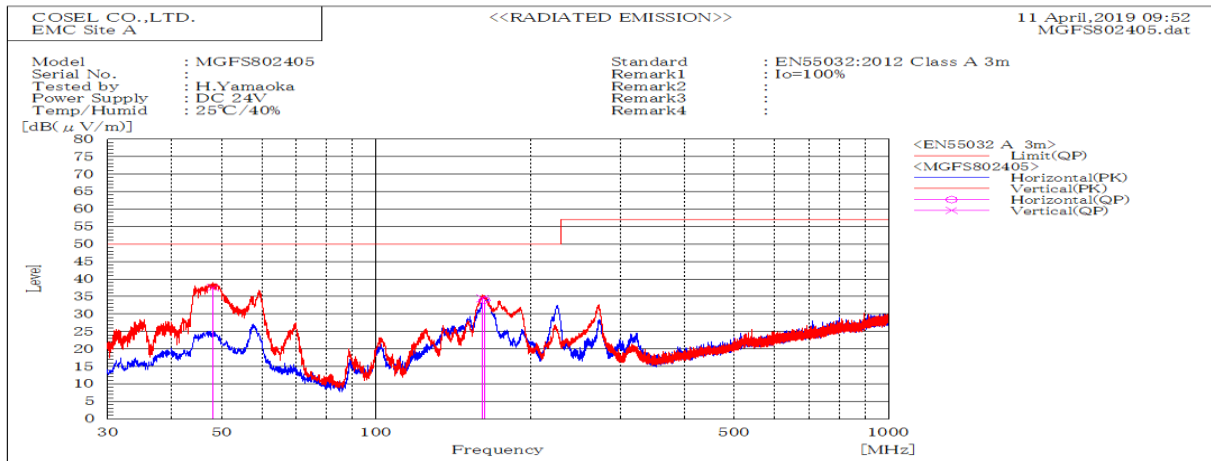


| DATA SHEET | | Date | 23-Apr-19 |
|------------|--|-----------|------------|
| Model | MGFS802405 | Temp. | 25 degreeC |
| Test | EMI Line conduction & Radiated emission | Humid. | 40 %RH |
| | | Tested by | H.Yamaoka |



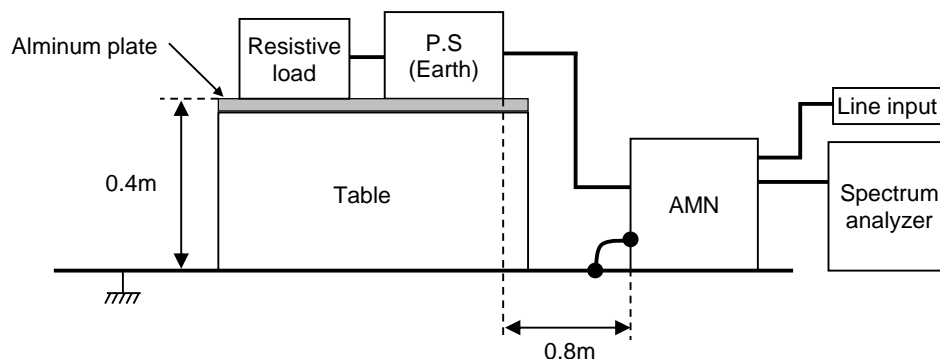
| Frequency | Line | Level | | Limit | | Margin | | Pass/Fail | Remark |
|-----------|------|--------|------|--------|----|--------|------|-----------|--------|
| MHz | | dB(μV) | | dB(μV) | | dB | | | |
| | | QP | AV | QP | AV | QP | AV | | |
| 11.123 | L1 | 51.4 | 50.5 | 73 | 60 | 21.6 | 9.5 | Pass | |
| 0.21 | L1 | 50.9 | 50.9 | 79 | 66 | 28.1 | 15.1 | Pass | |
| 11.115 | N | 51.4 | 50.4 | 73 | 60 | 21.6 | 9.6 | Pass | |



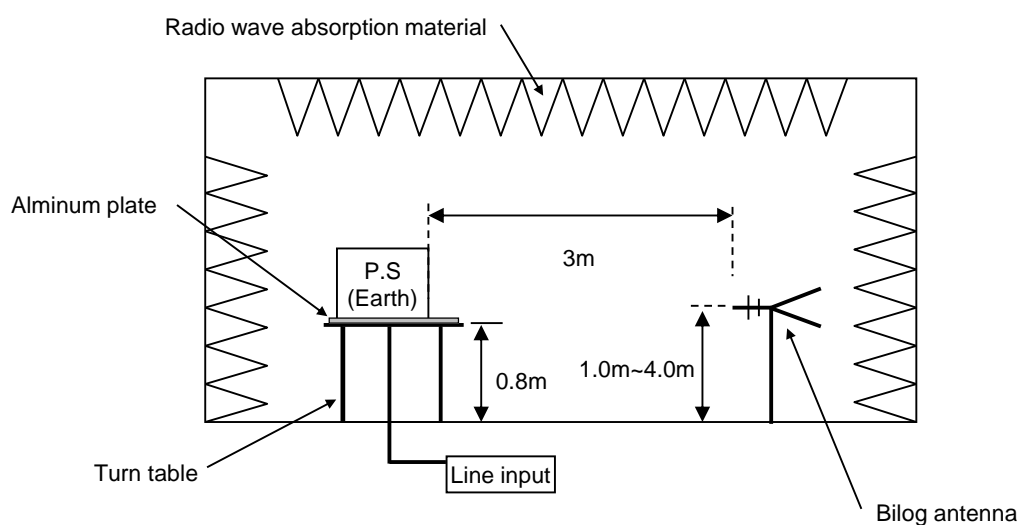
| Frequency | Polarization | Stability | Level | Limit | Margin | Pass/Fail | Height | Angle | Remark |
|-----------|--------------|-----------|----------|----------|--------|-----------|--------|-------|--------|
| MHz | | | dB(μV/m) | dB(μV/m) | dB | | | | |
| | | | QP | QP | QP | | | | |
| 162.749 | H | Stable | 33.9 | 50 | 16.1 | Pass | 173.1 | 156.1 | |
| 48.167 | V | Stable | 37.5 | 50 | 12.5 | Pass | 100.2 | 0 | |
| 161.337 | V | Stable | 34.5 | 50 | 15.5 | Pass | 100.4 | 81.2 | |

| DATA SHEET | | Date | 23-Apr-19 |
|------------|--|-----------|------------|
| Model | Circuit used for measurement | Temp. | 25 degreeC |
| Test | EMI Line conduction & Radiated emission | Humid. | 40 %RH |
| | | Tested by | H.Yamaoka |

1. Line conduction



2. Radiated emission



Conditions

Test : EMI

Model Name : MGFS80□□

○Photographs of Test Set-Up LINE CONDUCTION



○Testing circuitry

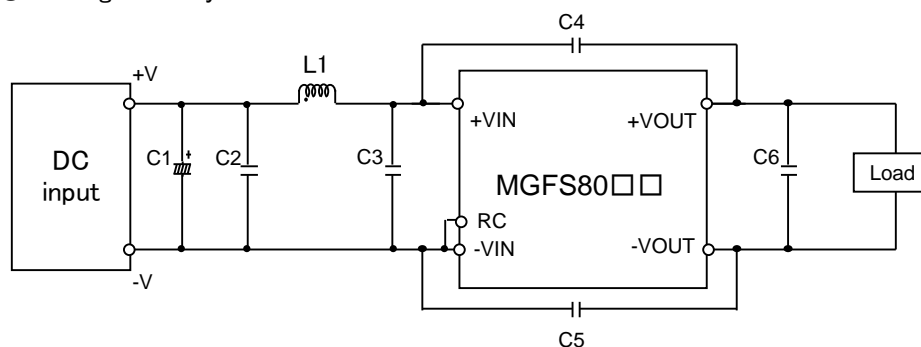


Fig.1 Testing circuitry

- C1 : MGFS8024□□ 63V 470 μ F Electrolytic capacitor (ELXZseries NIPPON CHEMI-CON)
MGFS8048□□ 100V 220 μ F Electrolytic capacitor (KYseries NIPPON CHEMI-CON)
- C2 : MGFS8024□□ 50V 10 μ F Ceramic capacitor (GRM32ER71H106K MURATA MANUFACTURING)
MGFS8048□□ 100V 4.7 μ F Ceramic capacitor (HMK325C7475K TAIYOU YUDEN)
- C3 : MGFS8024□□ 50V 10 μ F Ceramic capacitor (GRM32ER71H106K MURATA MANUFACTURING)
MGFS8048□□ 100V 4.7 μ F Ceramic capacitor (HMK325C7475K TAIYOU YUDEN)
- C4,C5 : MGFS8024□□ 2kV 2200pF Ceramic capacitor
(GR443QR73D222KW01 MURATA MANUFACTURING)
MGFS8048□□ 2kV 3300pF Ceramic capacitor
(GR443QR73D332KW01 MURATA MANUFACTURING)
- C6 : MGFS8024□□ 25V 22 μ F Ceramic capacitor (GRM32ER71E226K MURATA MANUFACTURING)
MGFS8048□□ 25V 22 μ F Ceramic capacitor (GRM32ER71E226K MURATA MANUFACTURING)
- L1 : MGFS8024□□ 12.0A 1.8 μ H Inductor (SRP7050TA-1R8M BOURNS)
MGFS8048□□ 8.0A 3.3 μ H Inductor (SRP7050TA-3R3M BOURNS)