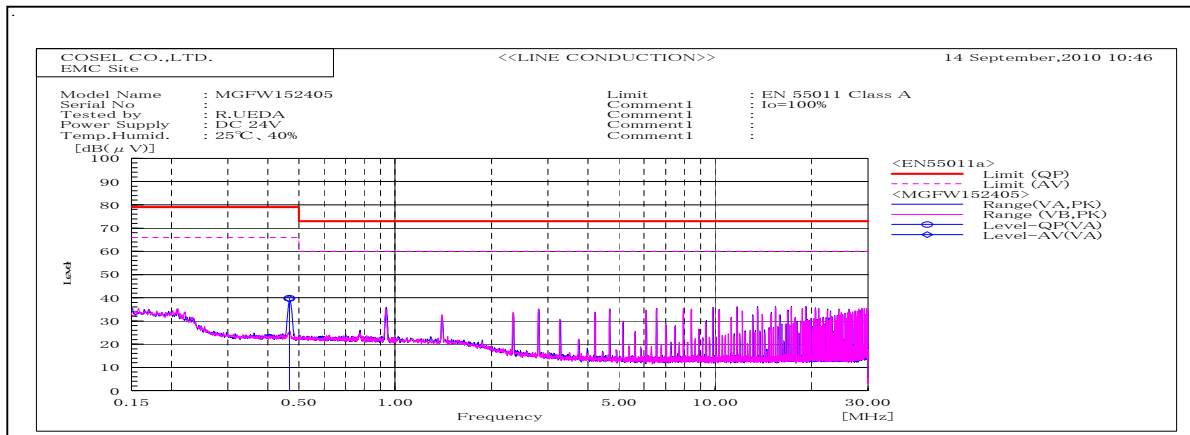
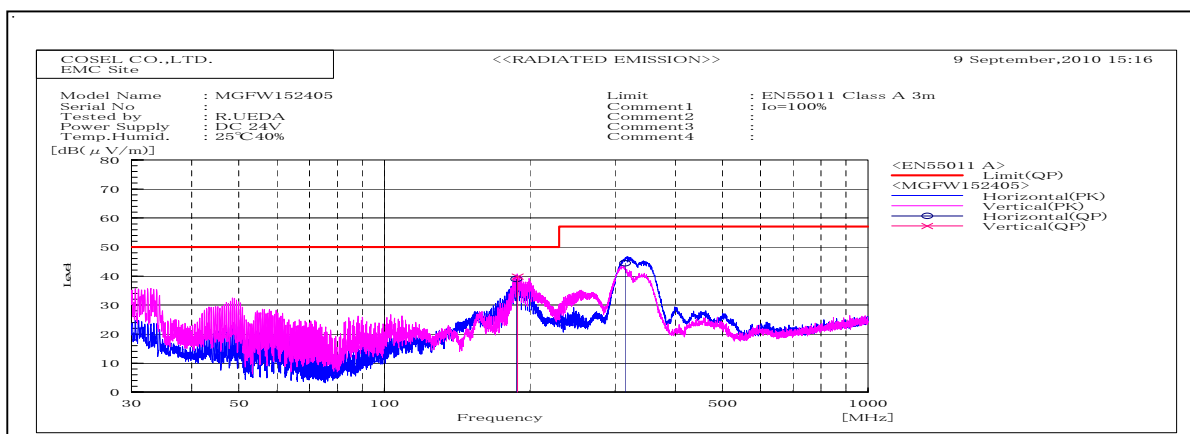


DATA SHEET		Date	21-Sep-10
Model	MGFW152405	Temp.	25 degreeC
Test	EMI Line conduction & Radiated emission	Humid.	40 %RH
		Tested by	R.Ueda



Frequency MHz	Harm	Line Phase	Reading dB(μV)		Factor dB	Level dB(μV)		Limit dB(μV)		Margin dB		Pass/ Fail	Remark
			QP	AV		QP	AV	QP	AV	QP	AV		
0.46692		VA	29.6	29.4	10.1	39.7	39.5	79	66	39.3	26.5	Pass	



Frequency MHz	Polarization	Stability	Reading dB(μV)		Space Loss dB	Level dB(mW)		Limit dB(mW)	Margin dB	Pass/Fail	Height cm	Angle deg	Remark
			QP	AV		QP	AV						
187.459	H	Stable	61.1	-22.1		39		50	11	Pass	100	0	
188.651	V	Stable	61.9	-22.1		39.8		50	10.2	Pass	120	264	
314.48	H	Stable	61.8	-17.3		44.5		57	12.5	Pass	126	20	

DATA SHEET

Model	Circuit used for measurement
Test	EMI Line conduction & Radiated emission

1. Line conduction



2. Radiated emission

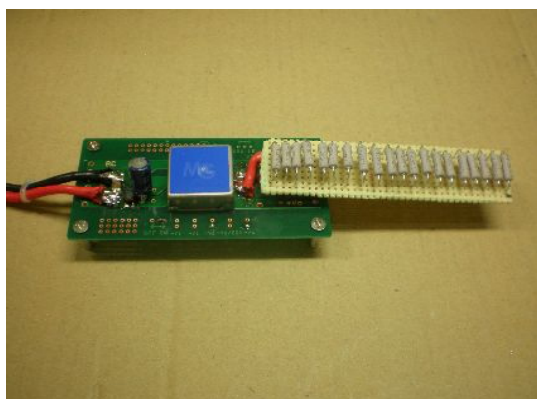


Conditions

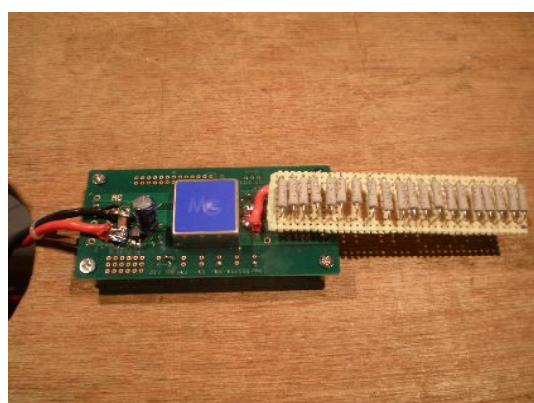
Test : EMI
Model Name : MGFS1524□□/MGFW1524□□

○Photographs of Test Set-Up

LINE CONDUCTION



RADIATED EMISSION



○Testing circuitry

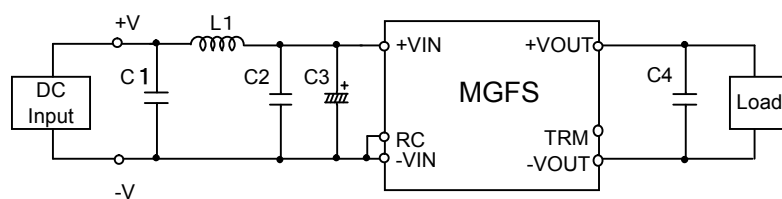


Fig.1 Testing circuitry 1

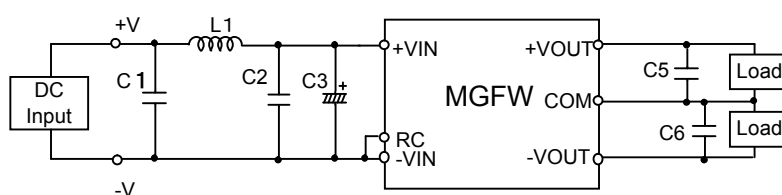


Fig.2 Testing circuitry 2

L1	:	0.5μH	CI4C-0R5	(KORIN ELECTRONICS)
C1,C2	:	50V 6.8 μ F	C4532X7R1H685MT	(TDK)
C3	:	50V 100 μ F	LXZ50VB100M	(NIPPON CHEMI-CON)
C4,C5,C6	:	25V 22 μ F	CM32X5R226K25A	(KYOCERA)