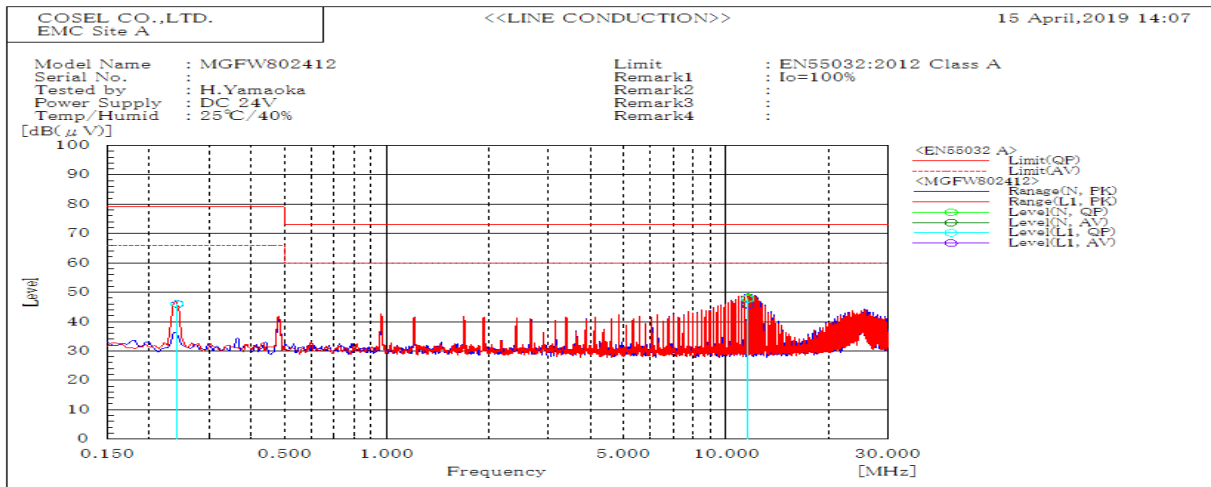
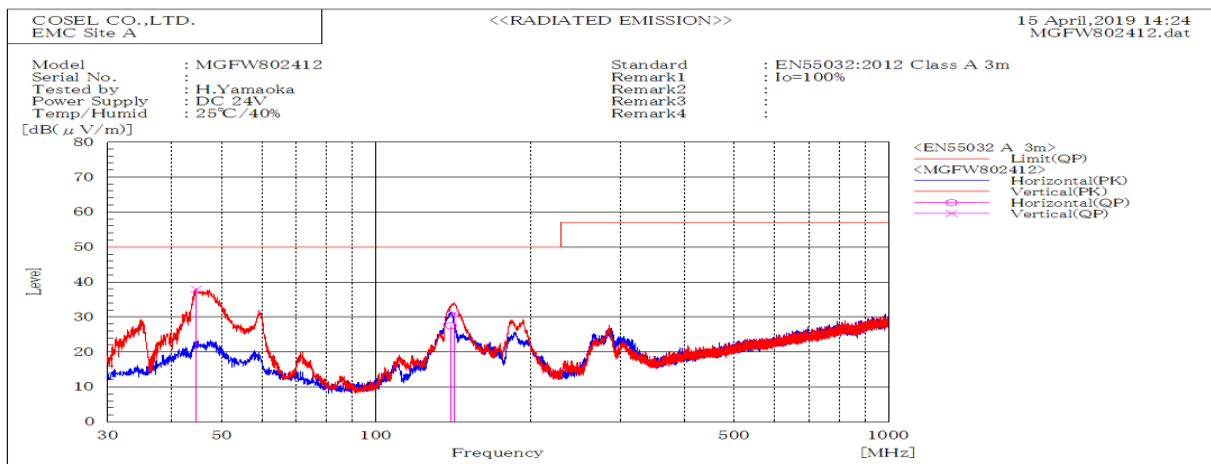


DATA SHEET		Date	23-Apr-19
Model	MGFW802412	Temp.	25 degreeC
Test	EMI Line conduction & Radiated emission	Humid.	40 %RH
		Tested by	H.Yamaoka



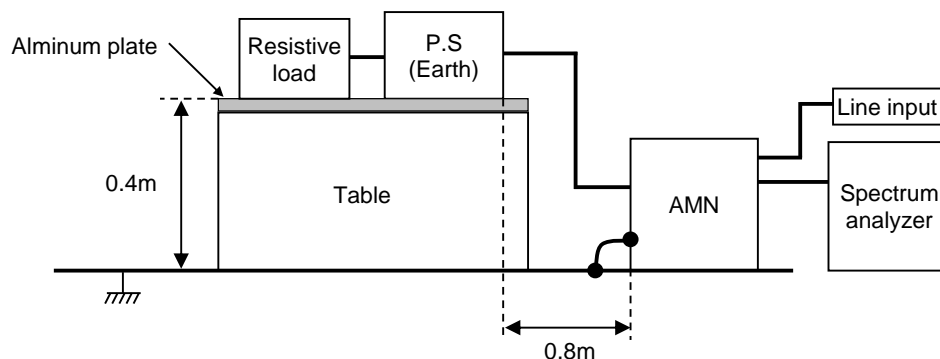
Frequency MHz	Line	Level dB(μV)		Limit dB(μV)		Margin dB		Pass/Fail	Remark
		QP	AV	QP	AV	QP	AV		
11.593	L1	47.7	45.7	73	60	25.3	14.3	Pass	
0.242	L1	46.1	46	79	66	32.9	20	Pass	
11.607	N	48.1	46	73	60	24.9	14	Pass	



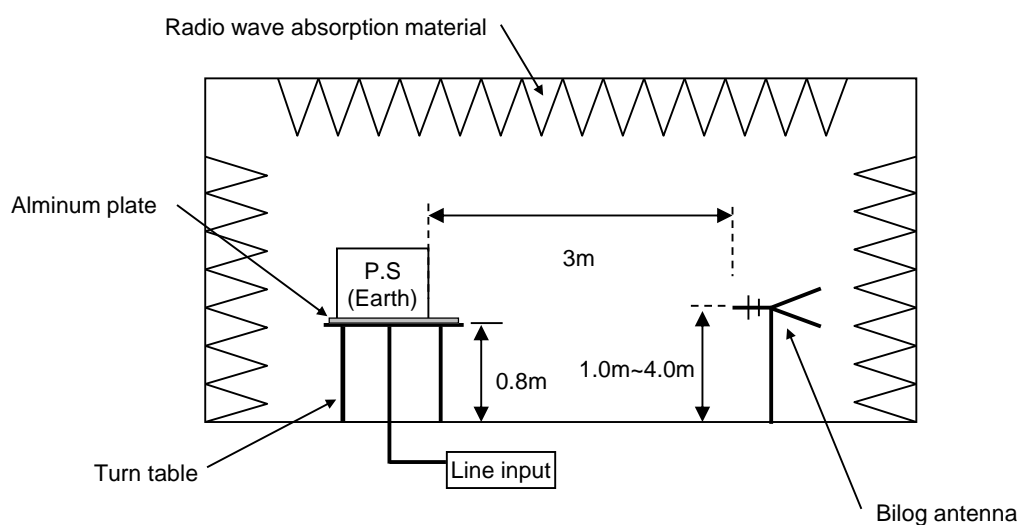
Frequency MHz	Polarization	Stability	Level dB(μV/m)		Margin dB	Pass/Fail	Height cm	Angle deg	Remark
			QP	QP					
139.904	H	Stable	27.5	50	22.5	Pass	206.6	146.1	
141.988	V	Stable	31.1	50	18.9	Pass	100.2	51.3	
44.689	V	Stable	37.9	50	12.1	Pass	100.4	93	

DATA SHEET		Date	23-Apr-19
Model	Circuit used for measurement	Temp.	25 degreeC
Test	EMI Line conduction & Radiated emission	Humid.	40 %RH
		Tested by	H.Yamaoka

1. Line conduction



2. Radiated emission



Conditions

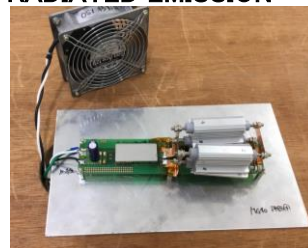
Test : EMI

Model Name : MGFS80□□

○Photographs of Test Set-Up LINE CONDUCTION



RADIATED EMISSION



○Testing circuitry

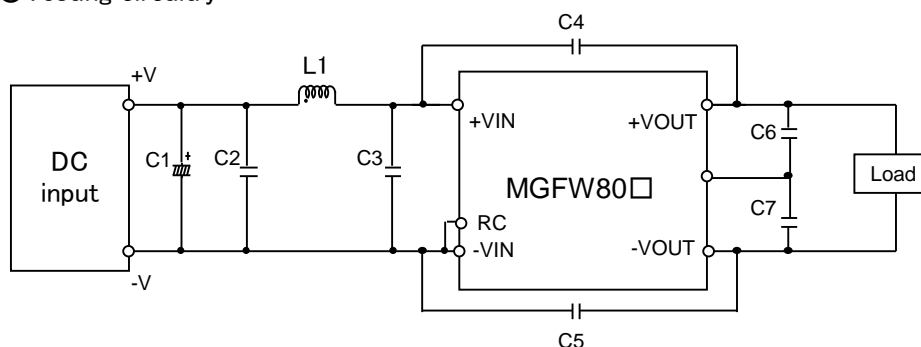


Fig.1 Testing circuitry

- C1 : MGFS8024□□ 63V 470 μ F Electrolytic capacitor (ELXZseries NIPPON CHEMI-CON)
MGFS8048□□ 100V 220 μ F Electrolytic capacitor (KYseries NIPPON CHEMI-CON)
- C2 : MGFS8024□□ 50V 10 μ F Ceramic capacitor (GRM32ER71H106K MURATA MANUFACTURING)
MGFS8048□□ 100V 4.7 μ F Ceramic capacitor (HMK325C7475K TAIYOU YUDEN)
- C3 : MGFS8024□□ 50V 10 μ F Ceramic capacitor (GRM32ER71H106K MURATA MANUFACTURING)
MGFS8048□□ 100V 4.7 μ F Ceramic capacitor (HMK325C7475K TAIYOU YUDEN)
- C4,C5 : MGFS8024□□ 2kV 2200pF Ceramic capacitor
(GR443QR73D222KW01 MURATA MANUFACTURING)
MGFS8048□□ 2kV 2200pF Ceramic capacitor
(GR443QR73D222KW01 MURATA MANUFACTURING)
- C6 : MGFS8024□□ 25V 22 μ F Ceramic capacitor (GRM32ER71E226K MURATA MANUFACTURING)
MGFS8048□□ 25V 22 μ F Ceramic capacitor (GRM32ER71E226K MURATA MANUFACTURING)
- C7 : MGFS8024□□ 25V 22 μ F Ceramic capacitor (GRM32ER71E226K MURATA MANUFACTURING)
MGFS8048□□ 25V 22 μ F Ceramic capacitor (GRM32ER71E226K MURATA MANUFACTURING)
- L1 : MGFS8024□□ 15.0A 1.0 μ H Inductor (SRP7050TA-1R0M BOURNS)
MGFS8048□□ 8.0A 3.3 μ H Inductor (SRP7050TA-3R3M BOURNS)