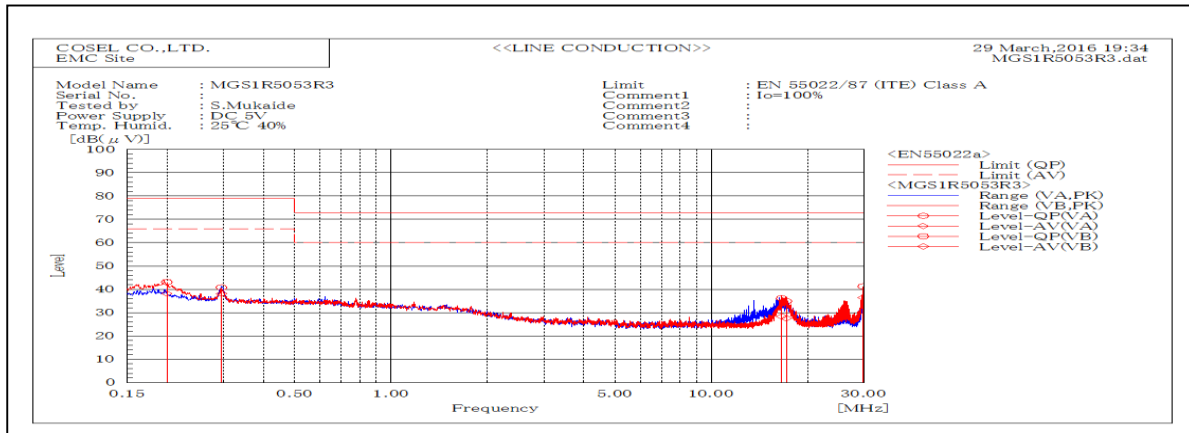
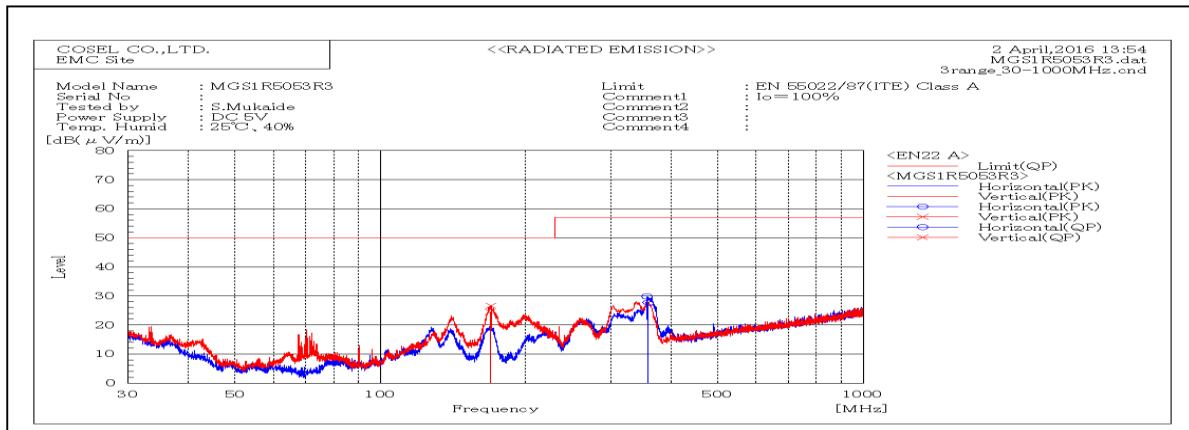


DATA SHEET		Date	02-Apr-16
Model	MGS1R5053R3	Temp.	25 degreeC
Test	EMI Line conduction & Radiated emission	Humid.	40 %RH
		Tested by	S.Mukaide



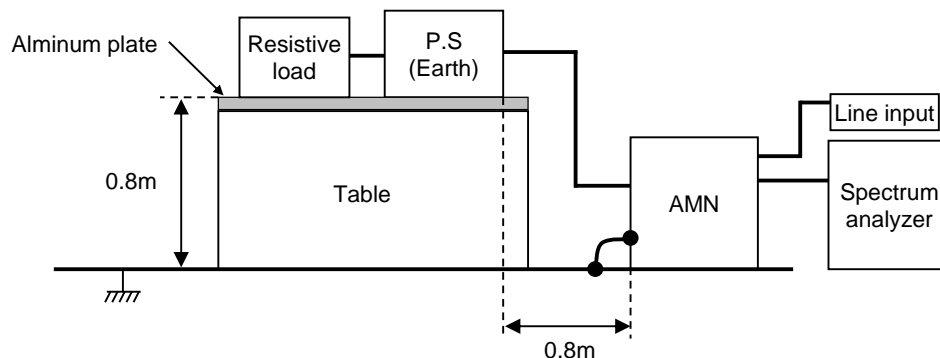
Frequency MHz	Harm	Line Phase	Reading dB(μV)		Factor dB	Level dB(μV)		Limit dB(μV)		Margin dB		Pass/ Fail	Remark
			QP	AV		QP	AV	QP	AV	QP	AV		
0.19937		VB	23.0	18.1	20.1	43.1	38.2	79	66	35.9	27.8	Pass	
0.29547		VA	20.8	18.1	20.0	40.8	38.1	79	66	38.2	27.9	Pass	
16.6201		VB	15.4	7.6	20.8	36.2	28.4	73	60	36.8	31.6	Pass	
17.20035		VA	14.0	6.7	20.9	34.9	27.6	73	60	38.1	32.4	Pass	
29.8983		VB	20.4	15.7	20.8	41.2	36.5	73	60	31.8	23.5	Pass	



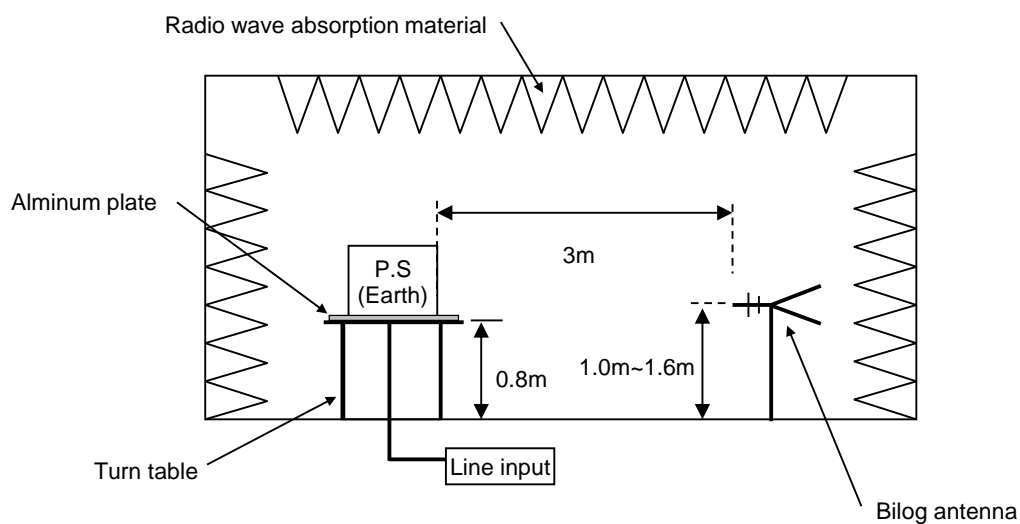
Frequency MHz	Harm	Polariz ation	Stability	Reading dB(μV)		Factor dB(1/m)	Level dB(μV/m)		Margin dB	Pass/Fail	Height cm	Angle deg	Remark
				QP	AV		QP	AV					
168.829		V	Stable	40.7	-16.2		24.5	50	25.5	Pass	120	208	
358.559		H	Stable	40.7	-13		27.7	57	29.3	Pass	119	161	

DATA SHEET		Date	02-Apr-16
Model	Circuit used for measurement	Temp.	25 degreeC
Test	EMI Line conduction & Radiated emission	Humid.	40 %RH
		Tested by	S.Mukaide

### 1. Line conduction



### 2. Radiated emission

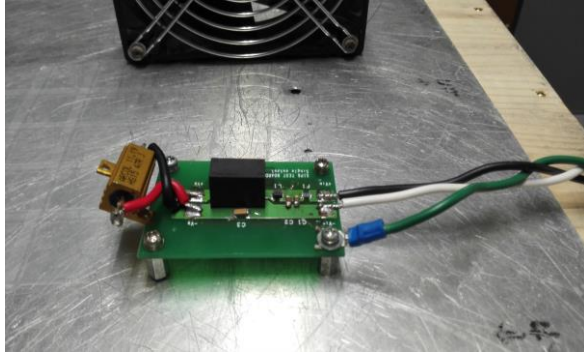


## Conditions

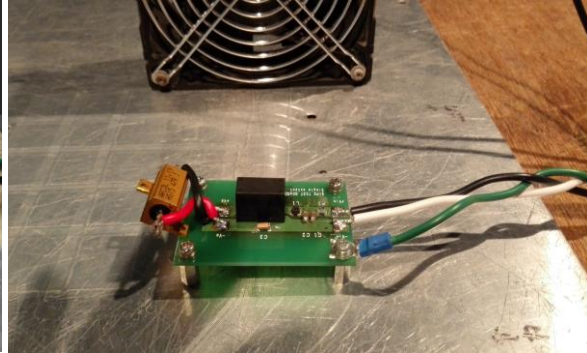
Test : EMI  
Model Name : MGS1R5□□

○Photographs of Test Set-Up

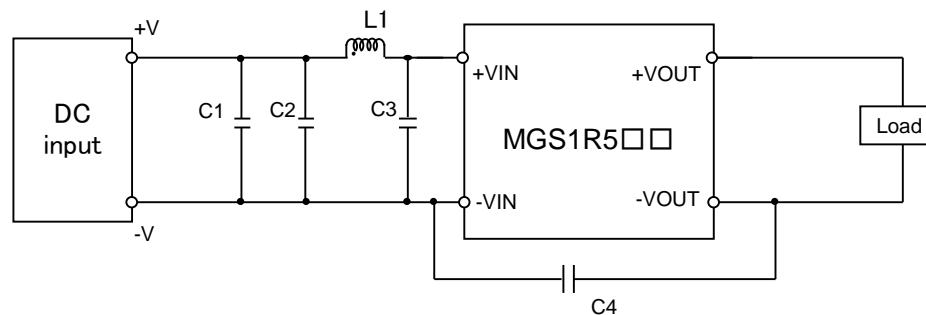
### LINE CONDUCTION



### RADIATED EMISSION



○Testing circuitry



- C1,C2,C3 : MGS1R505□□ 16V 22  $\mu$ F Ceramic capacitor (GRM31CR71C226K MURATA MANUFACTURING)  
MGS1R512□□ 25V 10  $\mu$ F Ceramic capacitor (GRM31CR71E106K MURATA MANUFACTURING)  
MGS1R524□□ 50V 4.7  $\mu$ F Ceramic capacitor (GRM31CR71H475K MURATA MANUFACTURING)  
MGS1R548□□ 100V 2.2  $\mu$ F Ceramic capacitor (GRM31CR72A225K MURATA MANUFACTURING)
- C4 : MGS1R505□□ 2kV 470pF Ceramic capacitor (GR442QR73D471K MURATA MANUFACTURING)  
MGS1R512□□ 2kV 470pF Ceramic capacitor (GR442QR73D471K MURATA MANUFACTURING)  
MGS1R524□□ 2kV 470pF Ceramic capacitor (GR442QR73D471K MURATA MANUFACTURING)  
MGS1R548□□ 2kV 470pF Ceramic capacitor (GR442QR73D471K MURATA MANUFACTURING)
- L1 : MGS1R505□□ 1550mA 3.3  $\mu$ H Inductor(LQH32PN3R3NNCL MURATA MANUFACTURING)  
MGS1R512□□ 1200mA 4.7  $\mu$ H Inductor(LQH32PN4R7NNCL MURATA MANUFACTURING)  
MGS1R524□□ 900mA 10  $\mu$ H Inductor(LQH32PN100MNCL MURATA MANUFACTURING)  
MGS1R548□□ 550mA 22  $\mu$ H Inductor(LQH32PN220MNCL MURATA MANUFACTURING)