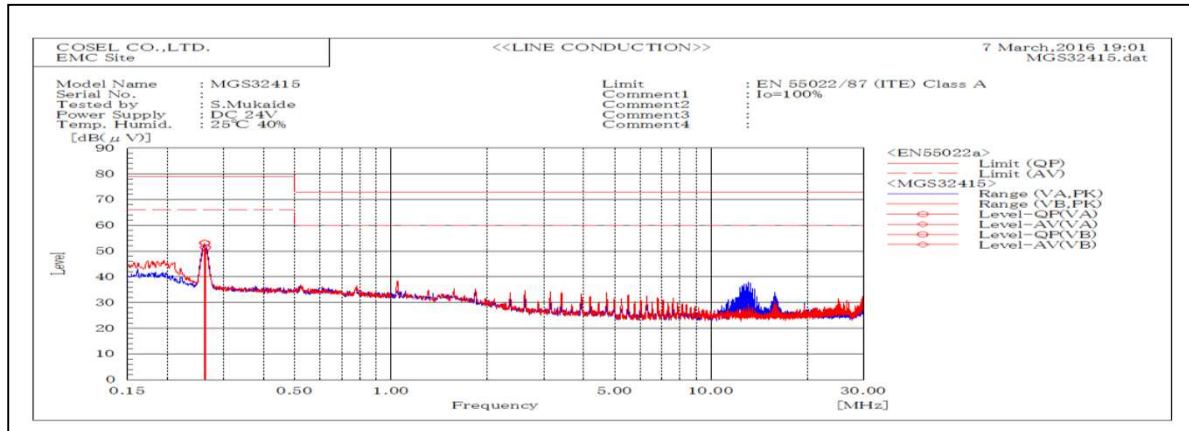
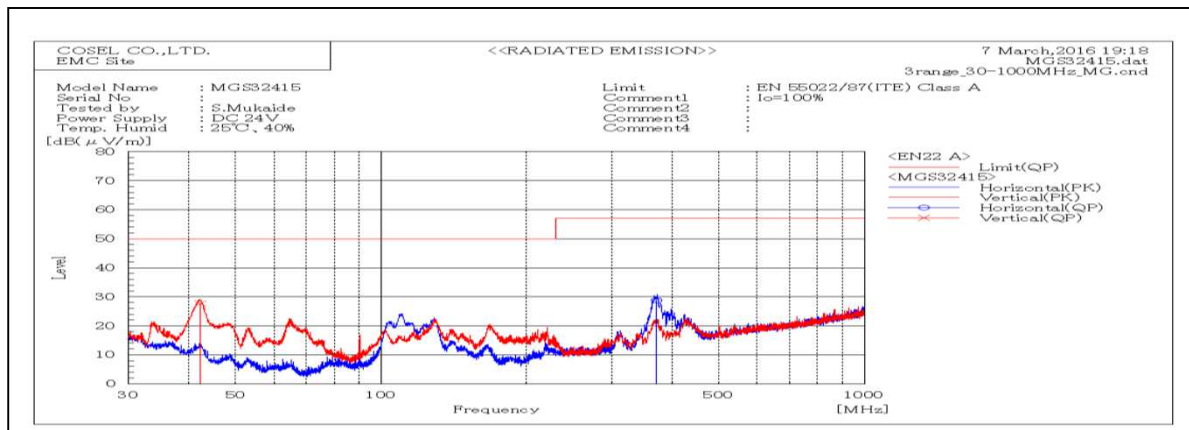


DATA SHEET		Date	02-Apr-16
Model	MGS32415	Temp.	25 degreeC
Test	EMI Line conduction & Radiated emission	Humid.	40 %RH
		Tested by	S.Mukaide



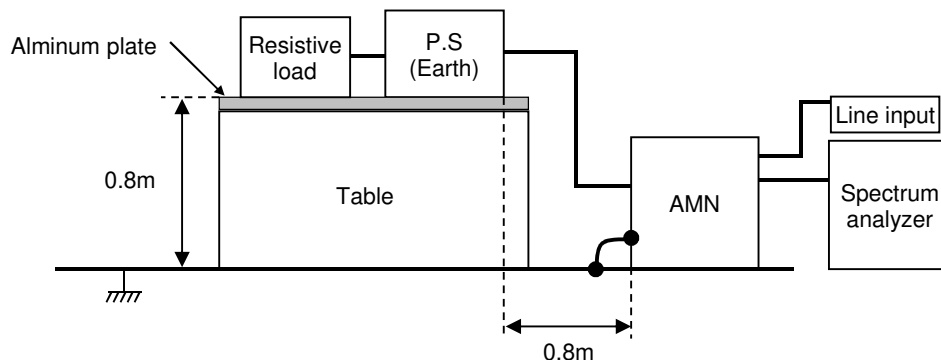
Frequency MHz	Harm	Line Phase	Reading dB(μV)		Factor dB	Level dB(μV)		Limit dB(μV)		Margin dB		Pass/ Fail	Remark
			QP	AV		QP	AV	QP	AV	QP	AV		
0.26169		VA	33.1	33.2	20	53.1	53.2	79	66	25.9	12.8	Pass	
0.26297		VB	31.3	31.2	20	51.3	51.2	79	66	27.7	14.8	Pass	



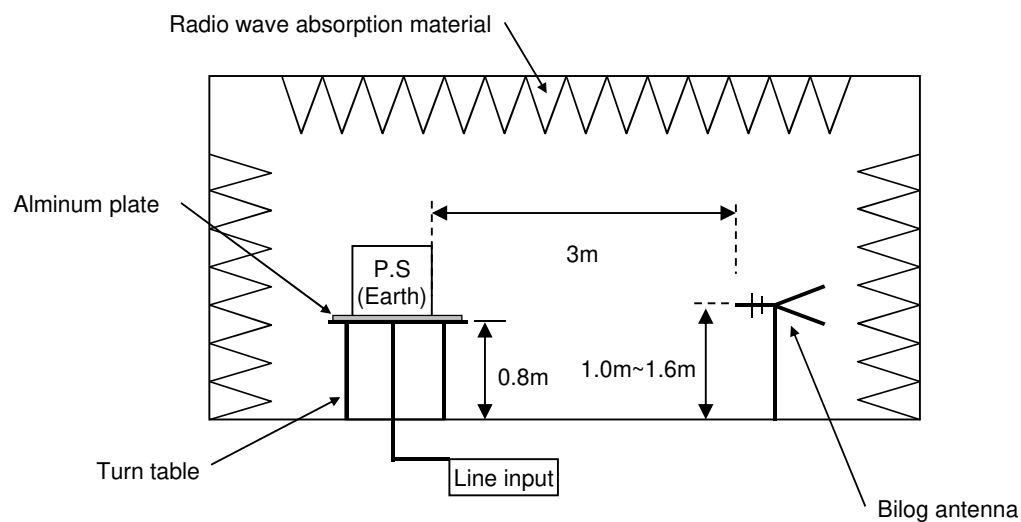
Frequency MHz	Harm	Polariz ation	Stabilit y	Reading dB(μV)		Factor dB(1/m)	Level dB(μV/m)		Limit dB(μV/m)	Margin dB	Pass/ Fail	Height cm	Angle deg	Remark
				QP	AV		QP	AV						
42.252		V	Stable	44.1		-16.4	27.7		50	22.3	Pass	104	71	
371.446		H	Stable	41.2		-12.4	28.8		57	28.2	Pass	102	107	

DATA SHEET		Date	02-Apr-16
Model	Circuit used for measurement	Temp.	25 degreeC
Test	EMI Line conduction & Radiated emission	Humid.	40 %RH
		Tested by	S.Mukaide

1. Line conduction



2. Radiated emission

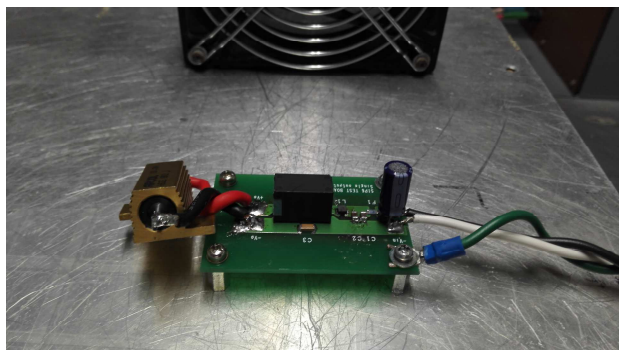


Conditions

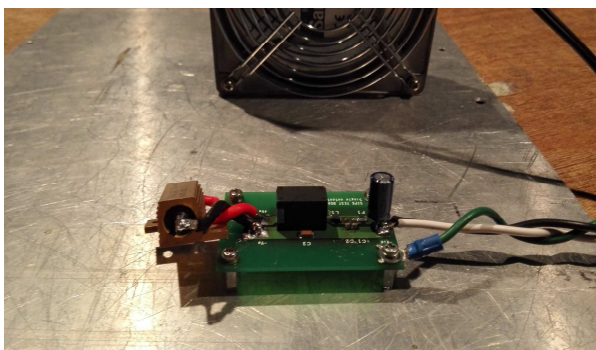
Test : EMI
Model Name : MGS3□□

○Photographs of Test Set-Up

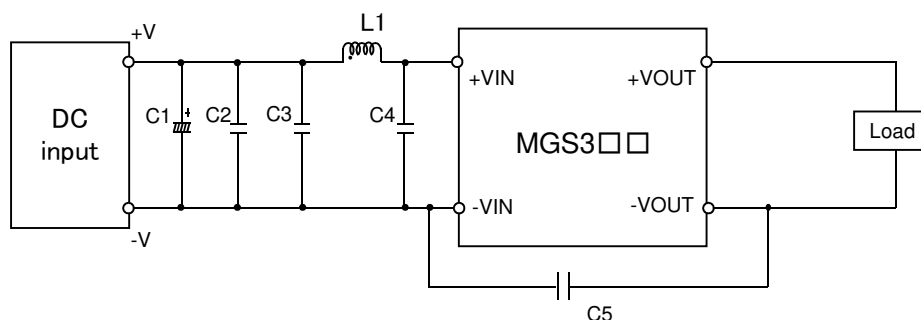
LINE CONDUCTION



RADIATED EMISSION



○Testing circuitry



C1	:	MGW305□□	25V 100 μ F Electrolytic capacitor (LXZseries NIPPON CHEMI-CON)
		MGW312□□	—
		MGW324□□	—
		MGW348□□	—
C2,C3,C4	:	MGW305□□	16V 22 μ F Ceramic capacitor (GRM31CR71C226K MURATA MANUFACTURING)
		MGW312□□	25V 10 μ F Ceramic capacitor (GRM31CR71E106K MURATA MANUFACTURING)
		MGW324□□	50V 4.7 μ F Ceramic capacitor (GRM31CR71H475K MURATA MANUFACTURING)
		MGW348□□	100V 2.2 μ F Ceramic capacitor (GRM31CR72A225K MURATA MANUFACTURING)
C5	:	MGW305□□	2kV 470pF Ceramic capacitor (GR442QR73D471K MURATA MANUFACTURING)
		MGW312□□	2kV 470pF Ceramic capacitor (GR442QR73D471K MURATA MANUFACTURING)
		MGW324□□	2kV 470pF Ceramic capacitor (GR442QR73D471K MURATA MANUFACTURING)
		MGW348□□	2kV 470pF Ceramic capacitor (GR442QR73D471K MURATA MANUFACTURING)
L1	:	MGW305□□	1550mA 3.3 μ H Inductor(LQH32PN3R3NNCL MURATA MANUFACTURING)
		MGW312□□	1200mA 4.7 μ H Inductor(LQH32PN4R7NNCL MURATA MANUFACTURING)
		MGW324□□	900mA 10 μ H Inductor(LQH32PN100MNCL MURATA MANUFACTURING)
		MGW348□□	550mA 22 μ H Inductor(LQH32PN220MNCL MURATA MANUFACTURING)