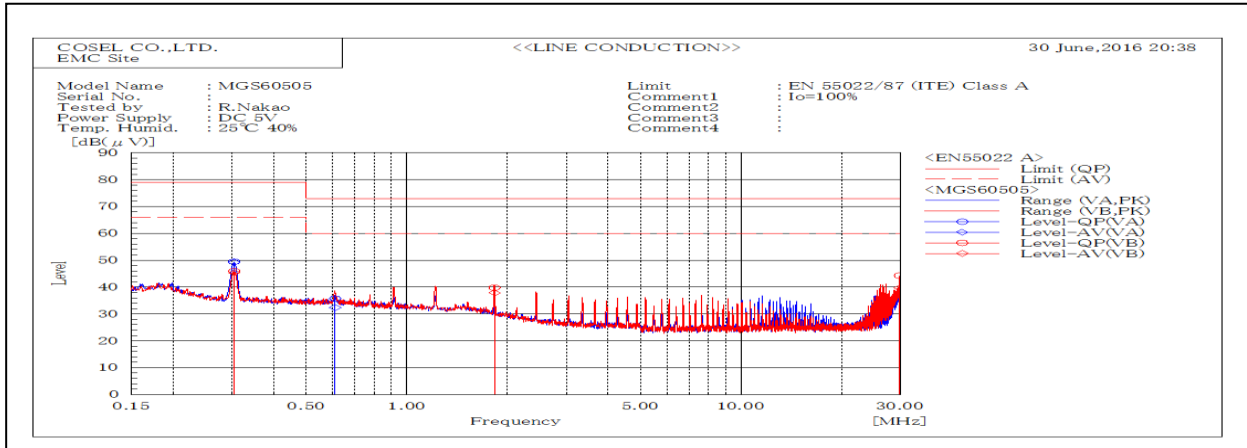
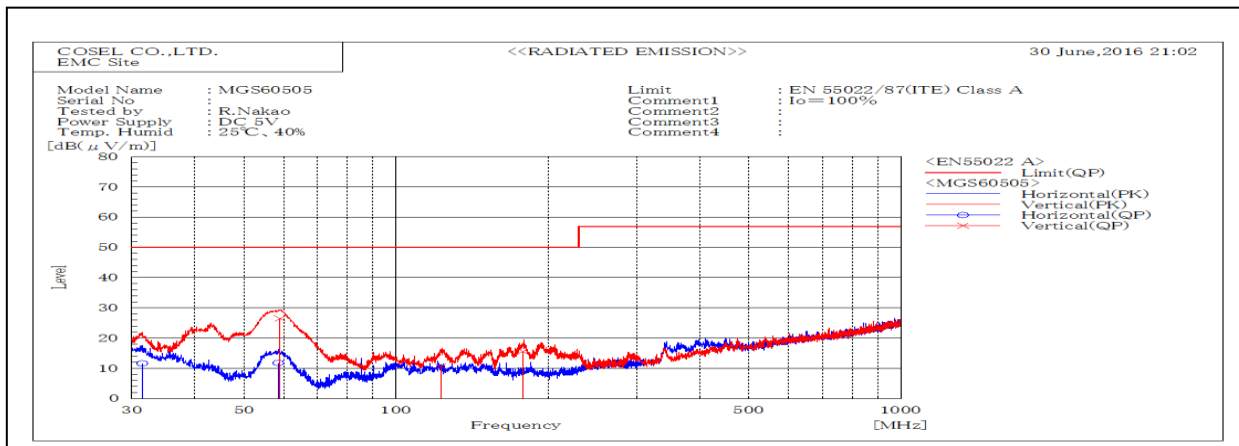


DATA SHEET		Date	14-Jul-16
Model	MGS60505	Temp.	25 degreeC
Test	EMI Line conduction & Radiated emission	Humid.	40 %RH
		Tested by	R.Nakao



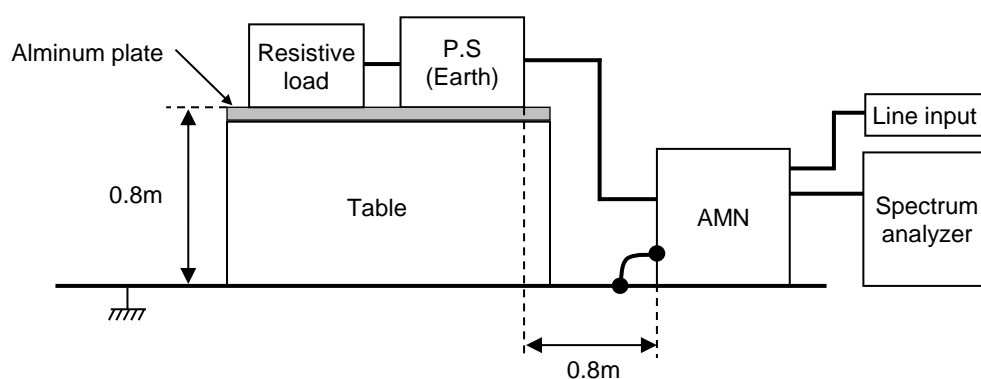
Frequency MHz	Harm	Line Phase	Reading dB(μV)		Factor dB	Level dB(μV)		Limit dB(μV)		Margin dB		Pass/ Fail	Remark
			QP	AV		QP	AV	QP	AV	QP	AV		
0.30414		VA	29.5	29.2	19.9	49.4	49.1	79	66	29.6	16.9	Pass	
0.30455		VB	25.9	25.3	20.0	45.9	45.3	79	66	33.1	20.7	Pass	
0.61057		VA	15.8	12.4	19.9	35.7	32.3	73	60	37.3	27.7	Pass	
1.83007		VB	19.8	17.8	20.0	39.8	37.8	73	60	33.2	22.2	Pass	
29.89965		VB	23.5	18.9	20.8	44.3	39.7	73	60	28.7	20.3	Pass	



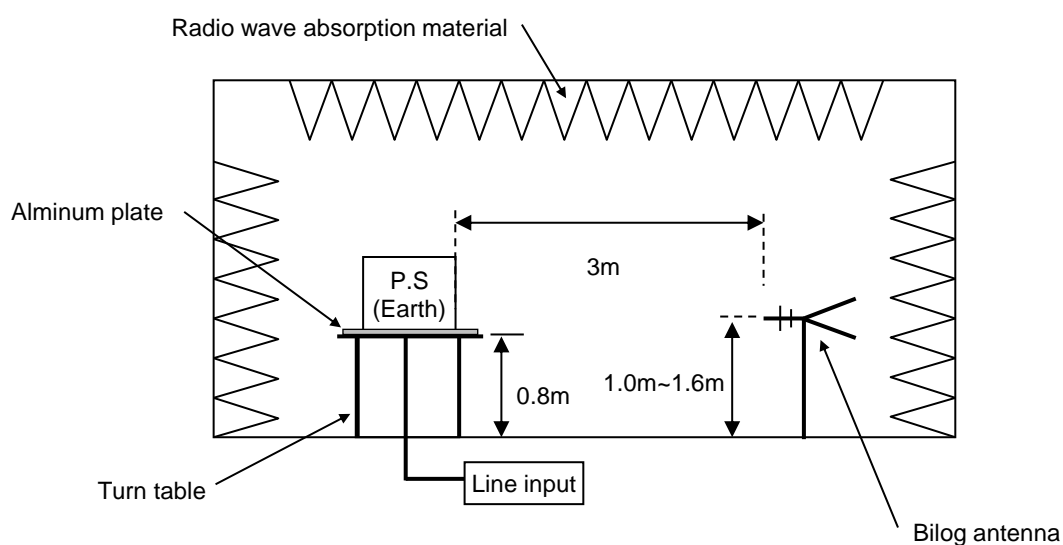
Frequency MHz	Polarization	Stability	Reading dB(μV)	Limit dB(μV/m)	Margin dB(μV/m)	Pass/Fail	Height cm	Angle deg	Remark
			QP	QP	QP				
31.483	H	Stable	11.6	50.0	38.4	Pass	155	23	
58.527	H	Stable	11.8	50.0	38.2	Pass	112	130	
58.966	V	Stable	26.5	50.0	23.5	Pass	103	353	
122.647	V	Stable	10.7	50.0	39.3	Pass	119	37	
178.338	V	Stable	15.6	50.0	34.4	Pass	107	343	

DATA SHEET		Date	14-Jul-16
Model	Circuit used for measurement	Temp.	25 degreeC
Test	EMI Line conduction & Radiated emission	Humid.	40 %RH
		Tested by	R.Nakao

## 1. Line conduction



## 2. Radiated emission

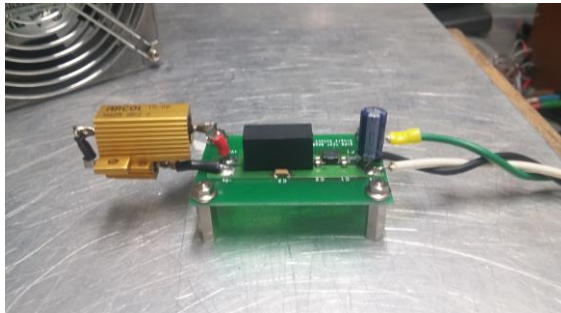


## Conditions

Test : EMI  
Model Name : MGS6□□

○Photographs of Test Set-Up

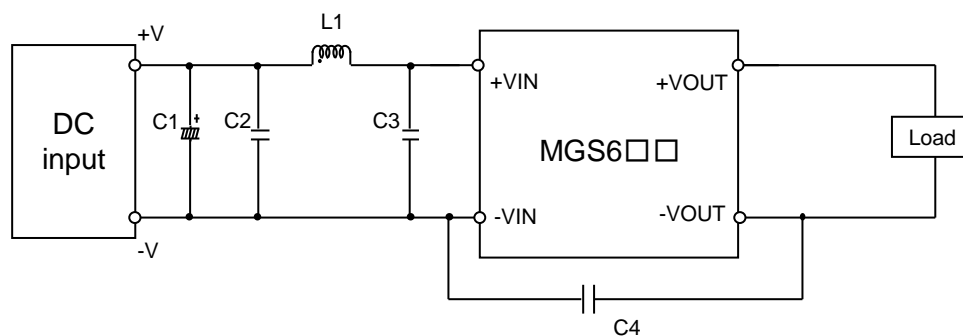
### LINE CONDUCTION



### RADIATED EMISSION



○Testing circuitry



C1 :	MGS605□□	25V 220 $\mu$ F	Electric capacitor (LXZseries NIPPON CHEMI-CON)
	MGS612□□	50V 100 $\mu$ F	Electric capacitor (LXZseries NIPPON CHEMI-CON)
	MGS624□□	—	
	MGS648□□	—	
C2 :	MGS605□□	16V 22 $\mu$ F	Ceramic capacitor (GRM31CC71C226K MURATA MANUFACTURING)
	MGS612□□	25V 10 $\mu$ F	Ceramic capacitor (GRM31CR71E106K MURATA MANUFACTURING)
	MGS624□□	50V 4.7 $\mu$ F	Ceramic capacitor (GRM31CR71H475K MURATA MANUFACTURING)
	MGS648□□	100V 2.2 $\mu$ F	Ceramic capacitor (GRM31CC72A225K MURATA MANUFACTURING)
C3 :	MGS605□□	—	
	MGS612□□	25V 10 $\mu$ F	Ceramic capacitor (GRM31CR71E106K MURATA MANUFACTURING)
	MGS624□□	50V 4.7 $\mu$ F	Ceramic capacitor (GRM31CR71H475K MURATA MANUFACTURING)
	MGS648□□	100V 2.2 $\mu$ F	Ceramic capacitor (GRM31CC72A225K MURATA MANUFACTURING)
C4 :	MGS605□□	2kV 470pF	Ceramic capacitor (GR442QR73D471K MURATA MANUFACTURING)
	MGS612□□	2kV 470pF	Ceramic capacitor (GR442QR73D471K MURATA MANUFACTURING)
	MGS624□□	2kV 470pF	Ceramic capacitor (GR442QR73D471K MURATA MANUFACTURING)
	MGS648□□	2kV 1000pF	Ceramic capacitor (GR442QR73D102K MURATA MANUFACTURING)
L1 :	MGS605□□	3000mA 1.5 $\mu$ H	Inductor(LQH5BPN1R5NT0 MURATA MANUFACTURING)
	MGS612□□	2600mA 2.2 $\mu$ H	Inductor(LQH5BPN2R2NT0 MURATA MANUFACTURING)
	MGS624□□	1600mA 10 $\mu$ H	Inductor(LQH5BPN100MT0 MURATA MANUFACTURING)
	MGS648□□	1050mA 22 $\mu$ H	Inductor(LQH5BPN220MT0 MURATA MANUFACTURING)