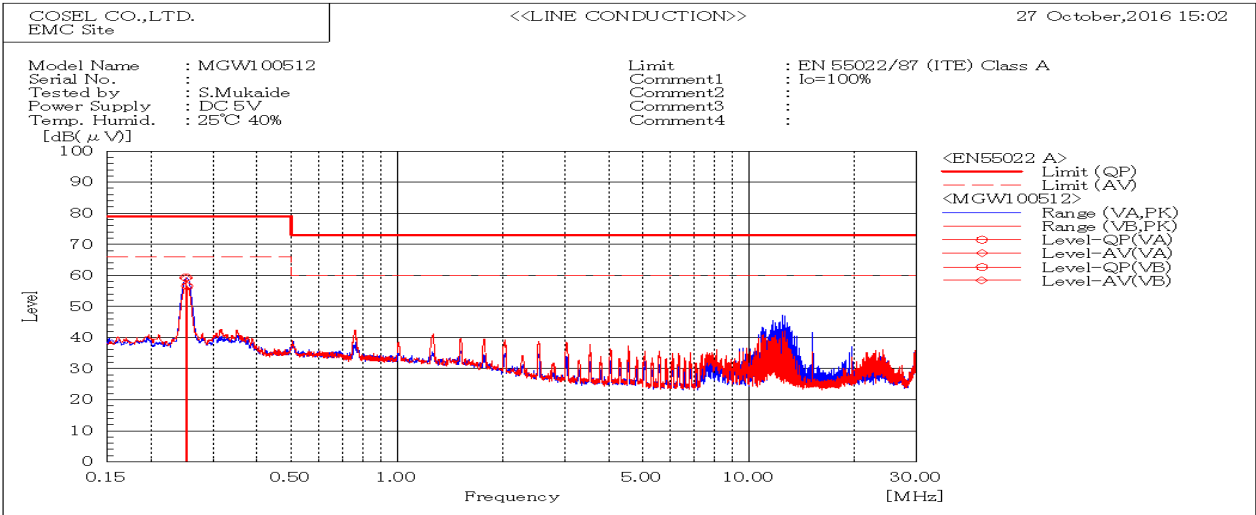
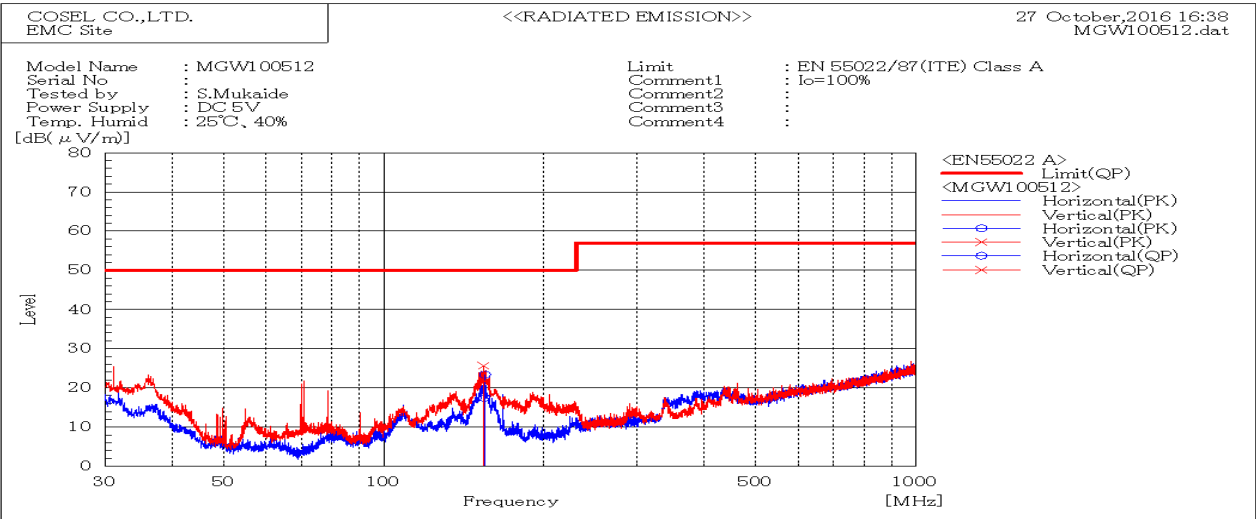


DATA SHEET		Date	28-Oct-16
Model	MGW100512	Temp.	25 degreeC
Test	EMI Line conduction & Radiated emission	Humid.	40 %RH
		Tested by	S.Mukaide



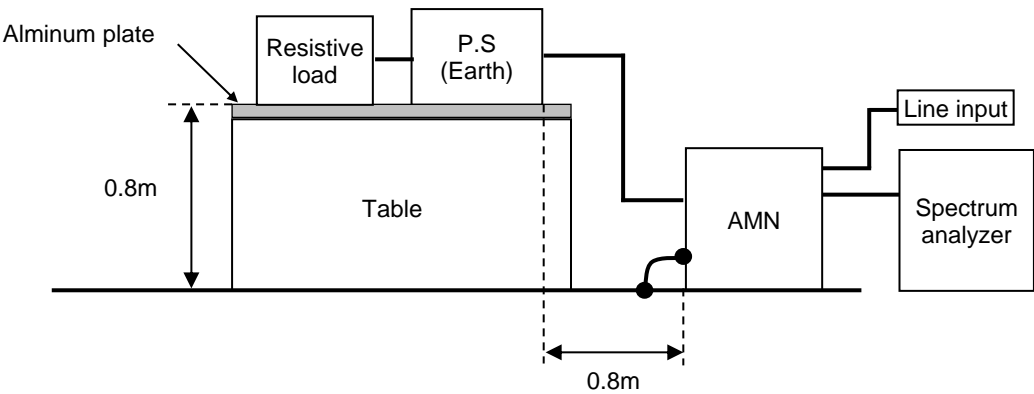
Frequency MHz	Line Phase	Level dB(μV)		Limit dB(μV)		Margin dB		Pass/Fail	Remark
		QP	AV	QP	AV	QP	AV		
0.25316	VB	56.5	56.6	79	66	22.5	9.4	Pass	
0.25153	VA	59.4	59	79	66	19.6	7	Pass	



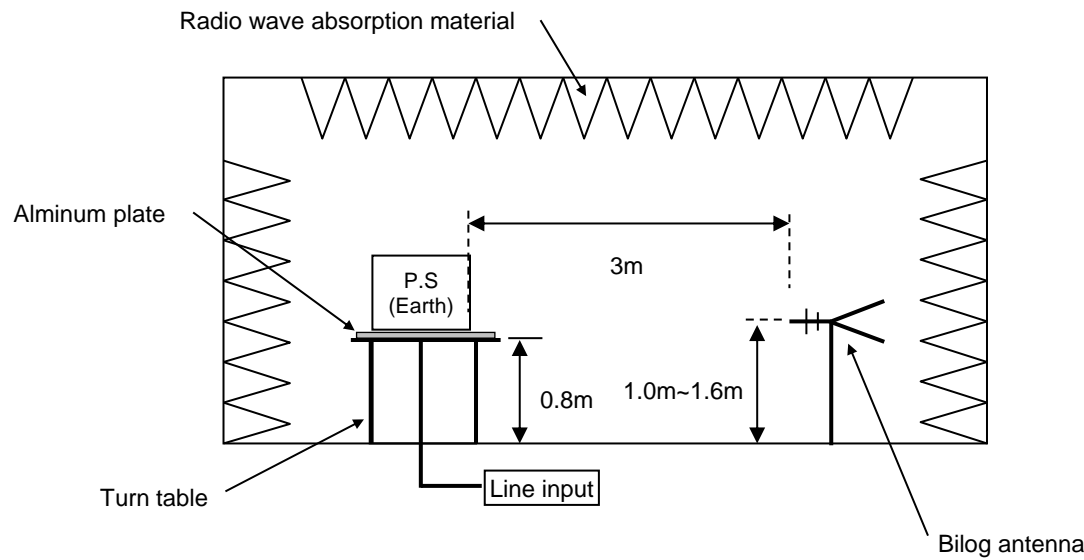
Frequency MHz	Polarization	Stability	Reading dB(μV)	Limit dB(μV/m)	Margin dB(μV/m)	Pass/Fail	Height cm	Angle deg	Remark
			QP	QP	QP				
154.352	V	Stable	21.7	50.0	28.3	Pass	104	0	
154.507	H	Stable	17.4	50.0	32.6	Pass	150	72	

DATA SHEET		Date	28-Oct-16
Model	Circuit used for measurement	Temp.	25 degreeC
Test	EMI Line conduction & Radiated emission	Humid.	40 %RH
		Tested by	S.Mukaide

1. Line conduction



2. Radiated emission

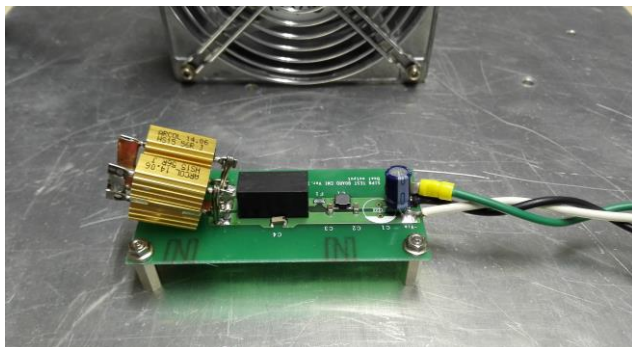


Conditions

Test : EMI
Model Name : MGW10□□

○Photographs of Test Set-Up

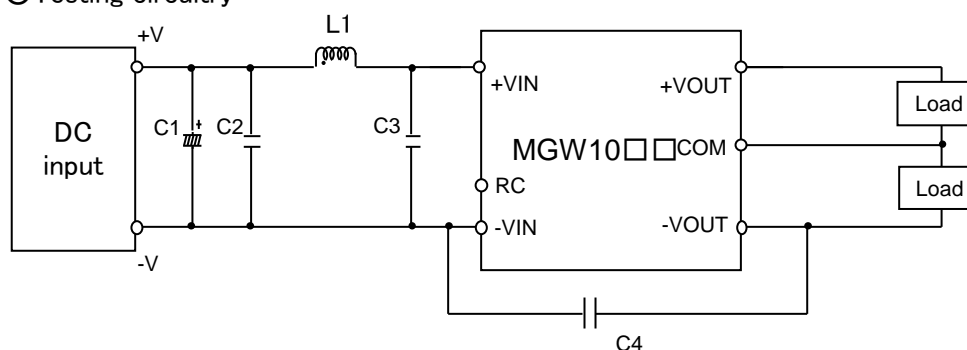
LINE CONDUCTION



RADIATED EMISSION



○Testing circuitry



C1 :	MGW1005□□	25V 470 μ F	Electric capacitor (LXZseries NIPPON CHEMI-CON)
	MGW1012□□	50V 100 μ F	Electric capacitor (LXZseries NIPPON CHEMI-CON)
	MGW1024□□	50V 100 μ F	Electric capacitor (LXZseries NIPPON CHEMI-CON)
	MGW1048□□	100V 39 μ F	Electric capacitor (LXVseries NIPPON CHEMI-CON)
C2 :	MGW1005□□	16V 22 μ F	Ceramic capacitor (GRM31CC71C226K MURATA MANUFACTURING)
	MGW1012□□	25V 10 μ F	Ceramic capacitor (GRM31CR71E106K MURATA MANUFACTURING)
	MGW1024□□	50V 4.7 μ F	Ceramic capacitor (GRM31CR71H475K MURATA MANUFACTURING)
	MGW1048□□	100V 2.2 μ F	Ceramic capacitor (GRM31CC72A225K MURATA MANUFACTURING)
C3 :	MGW1005□□	—	
	MGW1012□□	25V 10 μ F	Ceramic capacitor (GRM31CR71E106K MURATA MANUFACTURING)
	MGW1024□□	50V 4.7 μ F	Ceramic capacitor (GRM31CR71H475K MURATA MANUFACTURING)
	MGW1048□□	100V 2.2 μ F	Ceramic capacitor (GRM31CC72A225K MURATA MANUFACTURING)
C4 :	MGW1005□□	2kV 1000pF	Ceramic capacitor (GR442QR73D102K MURATA MANUFACTURING)
	MGW1012□□	2kV 1000pF	Ceramic capacitor (GR442QR73D102K MURATA MANUFACTURING)
	MGW1024□□	2kV 1000pF	Ceramic capacitor (GR442QR73D102K MURATA MANUFACTURING)
	MGW1048□□	2kV 2200pF	Ceramic capacitor (GR443QR73D222K MURATA MANUFACTURING)
L1 :	MGW1005□□	3000mA 1.5 μ H	Inductor(LQH5BPN1R5NT0 MURATA MANUFACTURING)
	MGW1012□□	2600mA 2.2 μ H	Inductor(LQH5BPN2R2NT0 MURATA MANUFACTURING)
	MGW1024□□	1600mA 10 μ H	Inductor(LQH5BPN100MT0 MURATA MANUFACTURING)
	MGW1048□□	1050mA 22 μ H	Inductor(LQH5BPN220MT0 MURATA MANUFACTURING)