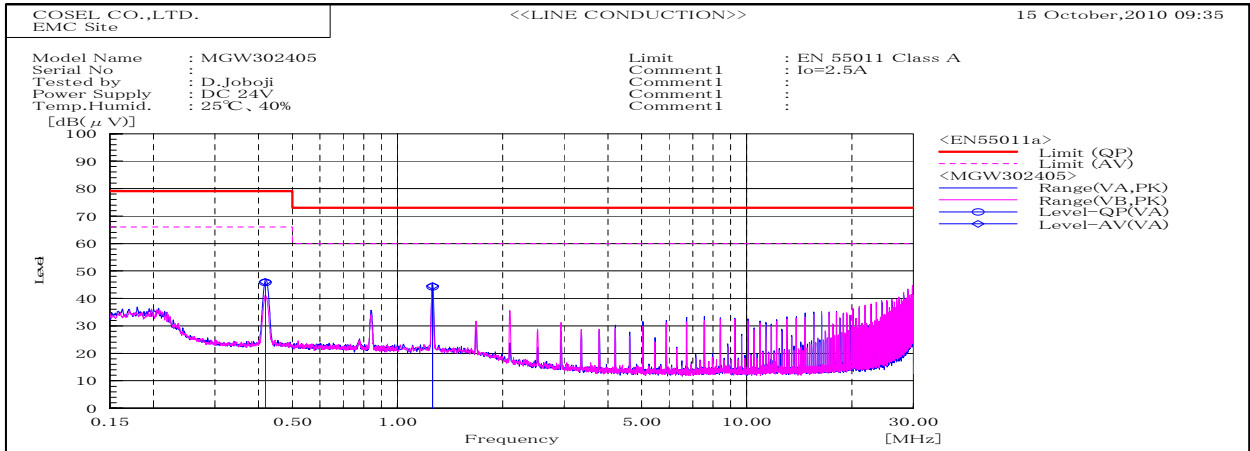
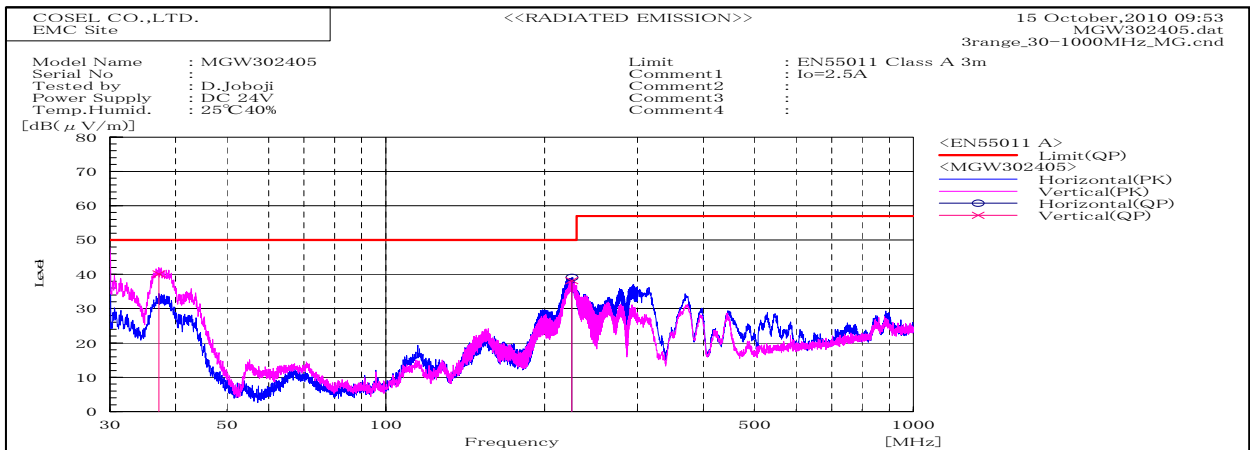


DATA SHEET		Date	19-Oct-10
Model	MGW302405	Temp.	25 degreeC
Test	EMI Line conduction & Radiated emission	Humid.	40 %RH
		Tested by	D.Joboji



Frequency MHz	Harm	Line Phase	Reading dB(μV)		Factor dB	Level dB(μV)		Limit dB(μV)		Margin dB		Pass/ Fail	Remark
			QP	AV		QP	AV	QP	AV	QP	AV		
0.41828		VA	35.7	35.9	10.1	45.8	46	79	66	33.2	20	Pass	
1.25938		VA	34.1	34.4	10.1	44.2	44.5	73	60	28.8	15.5	Pass	

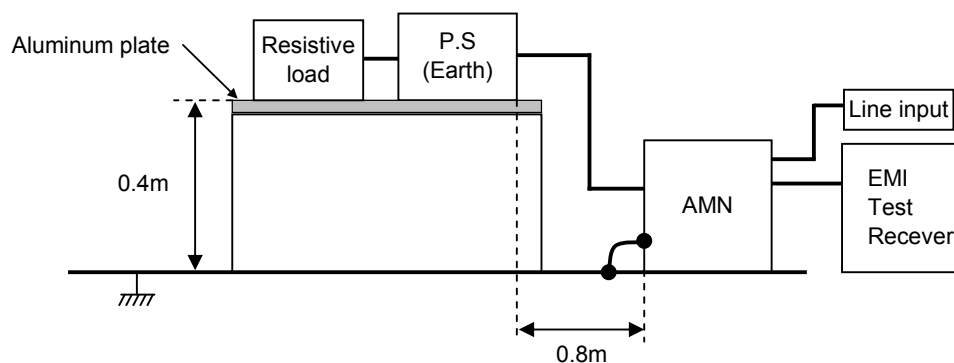


Frequency MHz	Polarization	Stability	Reading dB(μV)		Space Loss dB	Level dB(mW)	Limit dB(mW)	Margin dB	Pass/Fail	Height cm	Angle deg	Remark
			QP	AV		QP	QP	QP				
37.137	V	Stable	57.2	-17.1		40.1		50	9.9	Pass	105	0
225.319	V	Stable	58.3	-20.1		38.2		50	11.8	Pass	150	67
225.327	H	Stable	59.2	-20.1		39.1		50	10.9	Pass	156	20

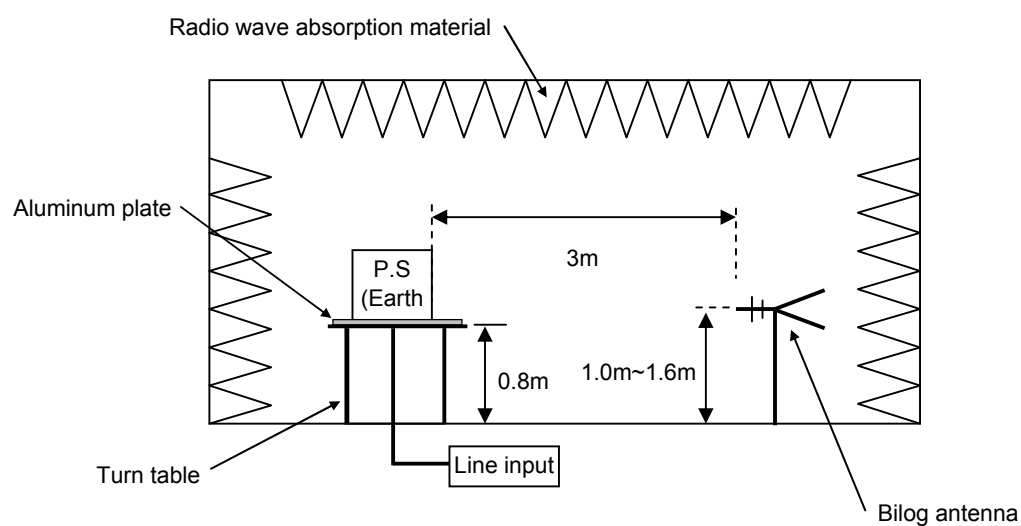
DATA SHEET

Model	Circuit used for measurement
Test	EMI Line conduction & Radiated emission

1. Line conduction



2. Radiated emission

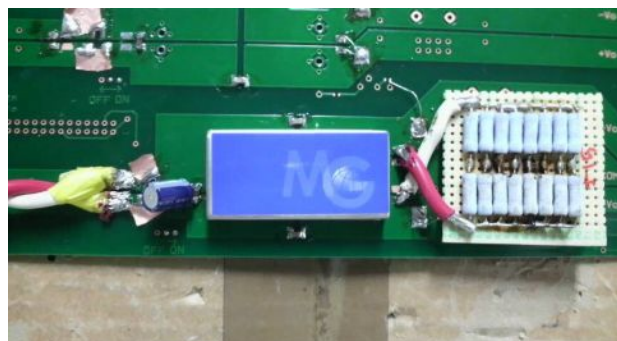


Conditions

Test : EMI
 Model Name : MGS3024□□/MGW3024□□

○Photographs of Test Set-Up

LINE CONDUCTION



RADIATED EMISSION



○Testing circuitry

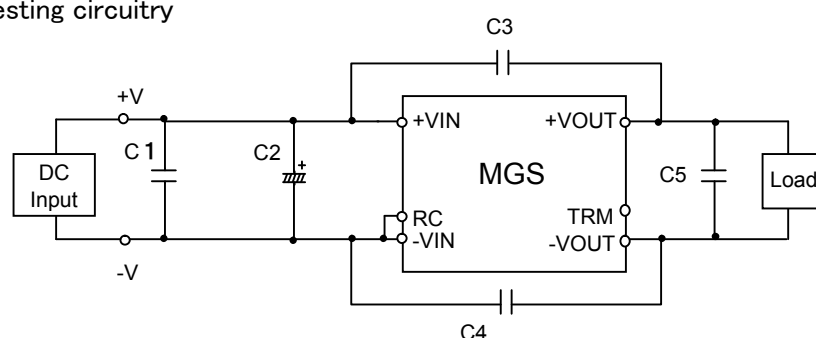


Fig.1 Testing circuitry 1

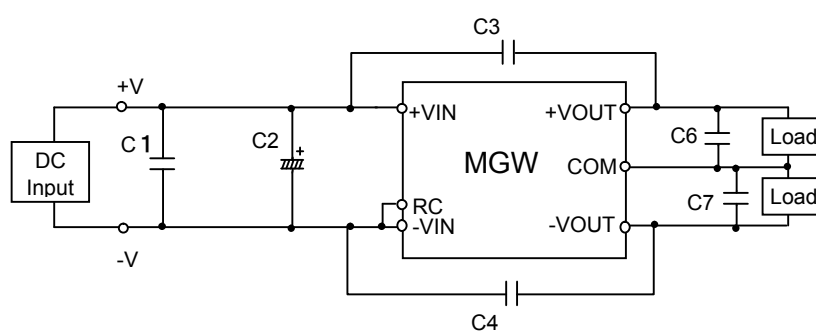


Fig.2 Testing circuitry 2

C1	: 50V	4.7 μ F	Ceramic Capacitor
C2	: 50V	100 μ F	Electrolytic Capacitor
C3,C4	: 2kV	1000pF	Ceramic Capacitor
C5,C6,C7	: 25V	22 μ F	Ceramic Capacitor