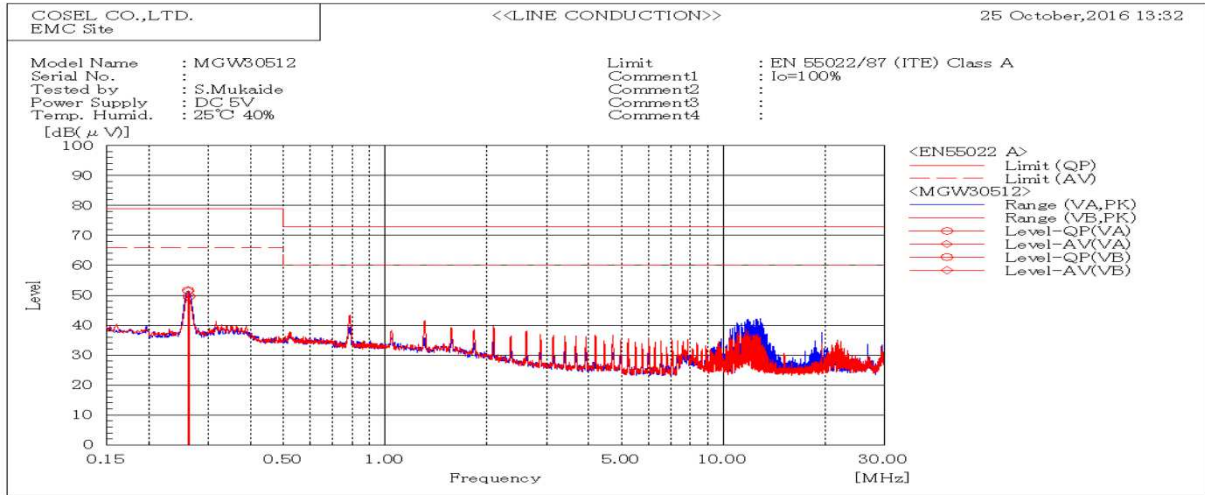
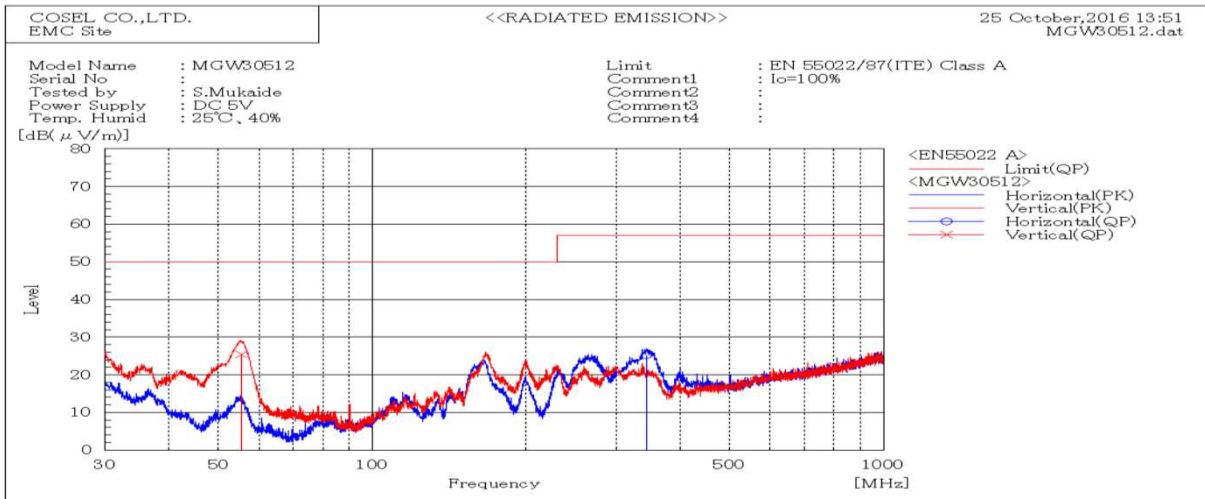


| DATA SHEET | | Date | 28-Oct-16 |
|------------|--|-----------|------------|
| Model | MGW30512 | Temp. | 25 degreeC |
| Test | EMI Line conduction & Radiated emission | Humid. | 40 %RH |
| | | Tested by | S.Mukaide |



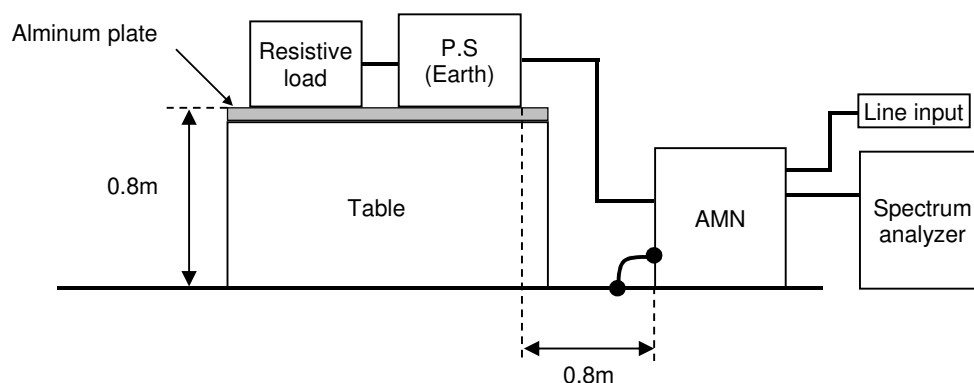
| Frequency MHz | Line Phase | Level dB(μV) | | Limit dB(μV) | | Margin dB | | Pass/Fail | Remark |
|------------------|---------------|-----------------|------|-----------------|----|--------------|------|-----------|--------|
| | | QP | AV | QP | AV | QP | AV | | |
| 0.26073 | VA | 51.6 | 51.4 | 79 | 66 | 27.4 | 14.6 | Pass | |
| 0.26252 | VB | 49.6 | 49.1 | 79 | 66 | 29.4 | 16.9 | Pass | |



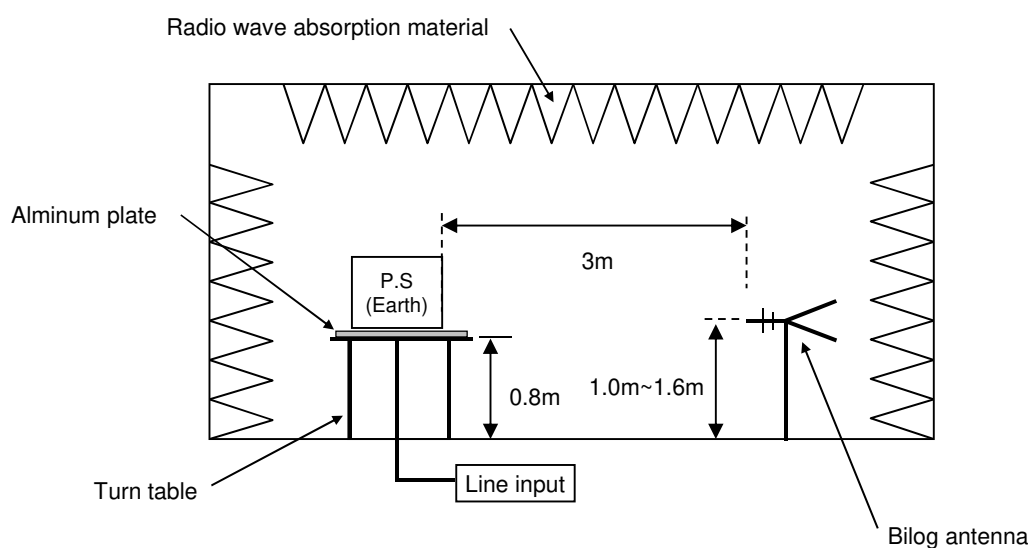
| Frequency MHz | Polarization | Stability | Reading dB(μV) | Limit dB(μV/m) | Margin dB(μV/m) | Pass/Fail | Height cm | Angle deg | Remark |
|------------------|--------------|-----------|-------------------|-------------------|--------------------|-----------|--------------|--------------|--------|
| | | | QP | QP | QP | | | | |
| 55.375 | V | Stable | 25.5 | 50.0 | 24.5 | Pass | 118 | 54 | |
| 343.551 | H | Stable | 25.2 | 57.0 | 31.8 | Pass | 104 | 25 | |

| DATA SHEET | | Date | 28-Oct-16 |
|------------|--|-----------|------------|
| Model | Circuit used for measurement | Temp. | 25 degreeC |
| Test | EMI Line conduction & Radiated emission | Humid. | 40 %RH |
| | | Tested by | S.Mukaide |

1. Line conduction



2. Radiated emission

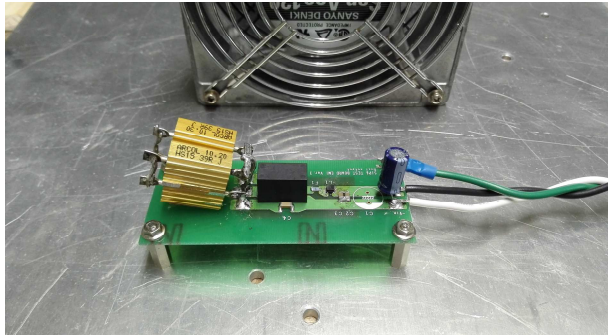


Conditions

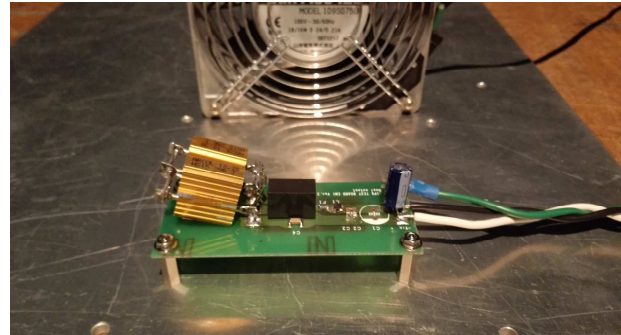
Test : EMI
Model Name : MGW3□□

○Photographs of Test Set-Up

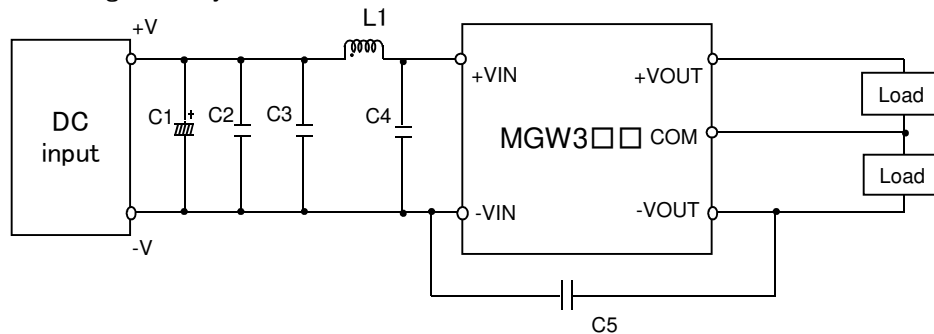
LINE CONDUCTION



RADIATED EMISSION



○Testing circuitry



C1 : MGW305□□ 25V 100 μ F Electrolytic capacitor (LXZseries NIPPON CHEMI-CON)
MGW312□□ -
MGW324□□ -
MGW348□□ -

C2,C3,C4 : MGW305□□ 16V 22 μ F Ceramic capacitor (GRM31CR71C226K MURATA MANUFACTURING)
MGW312□□ 25V 10 μ F Ceramic capacitor (GRM31CR71E106K MURATA MANUFACTURING)
MGW324□□ 50V 4.7 μ F Ceramic capacitor (GRM31CR71H475K MURATA MANUFACTURING)
MGW348□□ 100V 2.2 μ F Ceramic capacitor (GRM31CR72A225K MURATA MANUFACTURING)

C5 : MGW305□□ 2kV 470pF Ceramic capacitor (GR442QR73D471K MURATA MANUFACTURING)
MGW312□□ 2kV 470pF Ceramic capacitor (GR442QR73D471K MURATA MANUFACTURING)
MGW324□□ 2kV 470pF Ceramic capacitor (GR442QR73D471K MURATA MANUFACTURING)
MGW348□□ 2kV 470pF Ceramic capacitor (GR442QR73D471K MURATA MANUFACTURING)

L1 : MGW305□□ 1550mA 3.3 μ H Inductor (LQH32PN3R3NNCL MURATA MANUFACTURING)
MGW312□□ 1200mA 4.7 μ H Inductor (LQH32PN4R7NNCL MURATA MANUFACTURING)
MGW324□□ 900mA 10 μ H Inductor (LQH32PN100MNCL MURATA MANUFACTURING)
MGW348□□ 550mA 22 μ H Inductor (LQH32PN220MNCL MURATA MANUFACTURING)