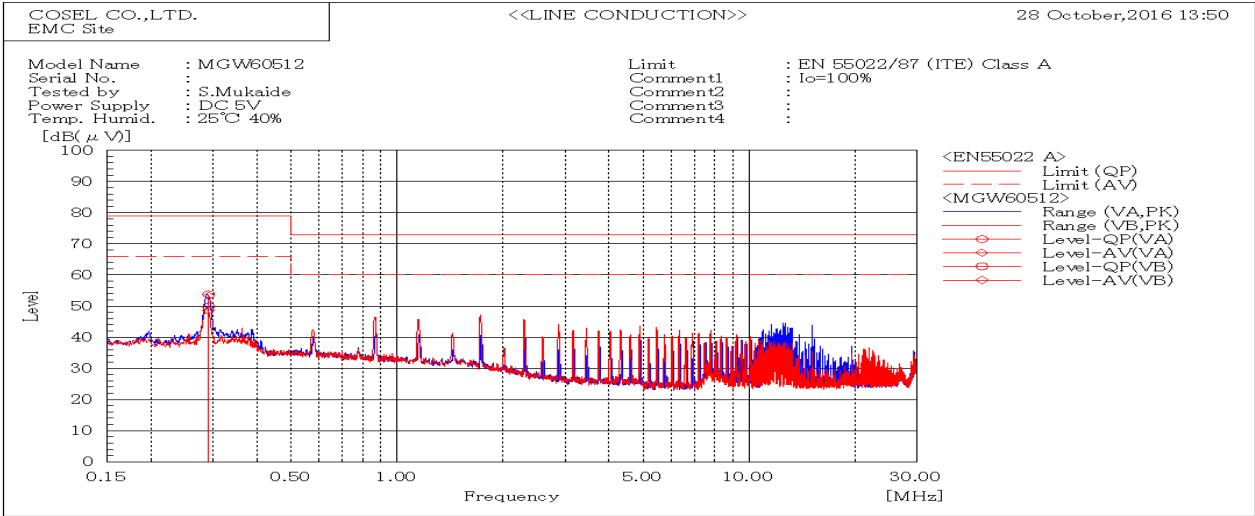
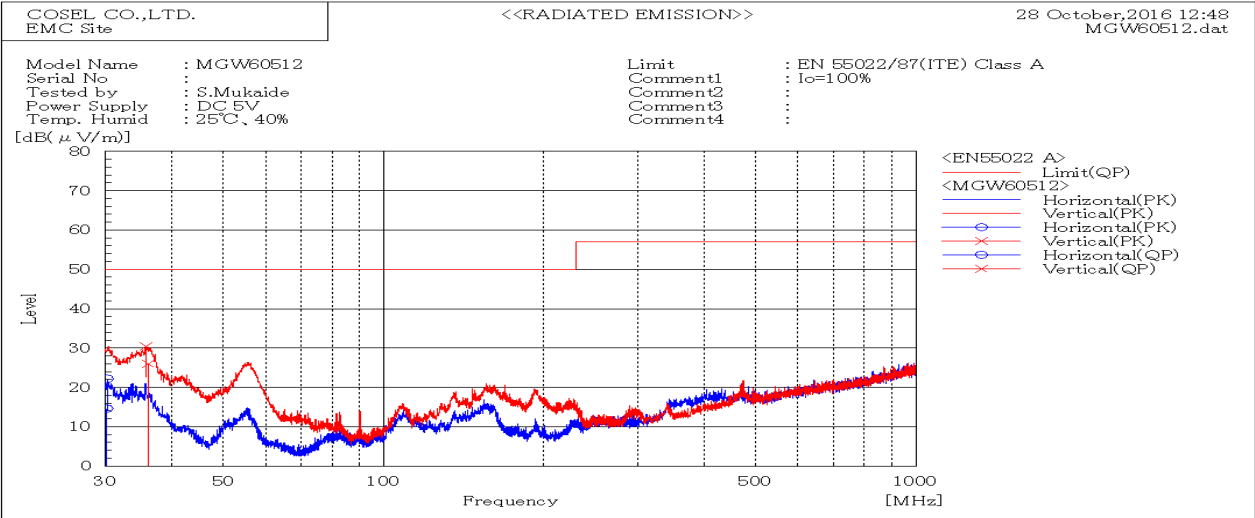


DATA SHEET		Date	28-Oct-16
Model	MGW60512	Temp.	25 degreeC
Test	EMI Line conduction & Radiated emission	Humid.	40 %RH
		Tested by	S.Mukaide



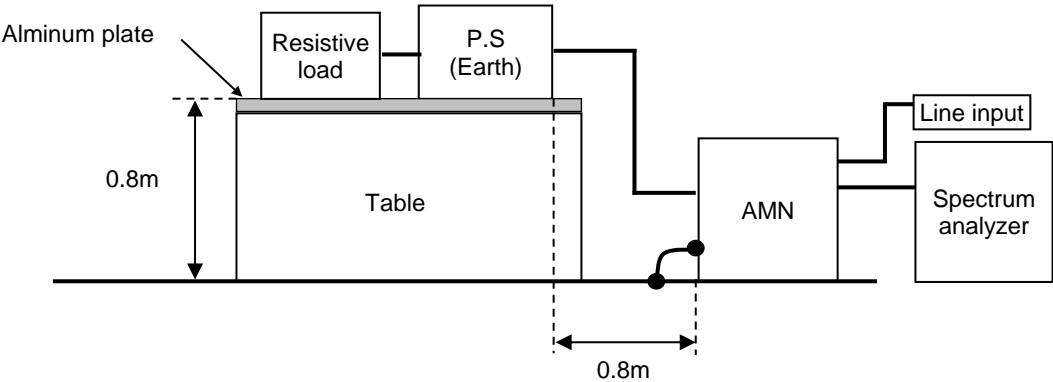
Frequency MHz	Line Phase	Level dB(μV)		Limit dB(μV)		Margin dB		Pass/Fail	Remark
		QP	AV	QP	AV	QP	AV		
0.29115	VB	49.9	48.6	79	66	29.1	17.4	Pass	
0.29131	VA	53.7	53.3	79	66	25.3	12.7	Pass	



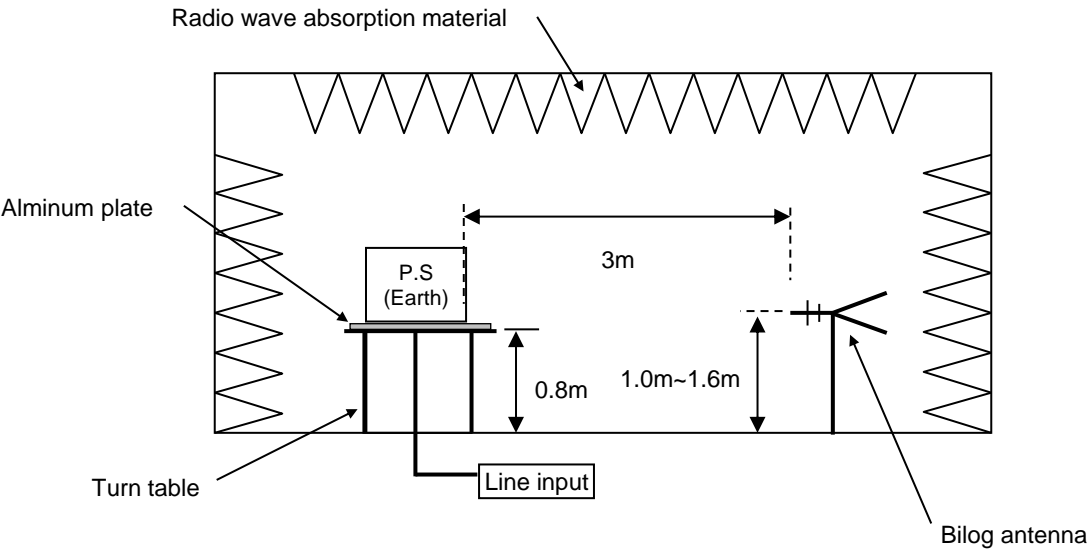
Frequency MHz	Polarization	Stability	Reading dB(μV)	Limit dB(μV/m)	Margin dB(μV/m)	Pass/Fail	Height cm	Angle deg	Remark
			QP	QP	QP				
30.178	H	Stable	14.6	50.0	35.4	Pass	123	265	
36.040	V	Stable	26.0	50.0	24.0	Pass	112	45	

DATA SHEET		Date	28-Oct-16
Model	Circuit used for measurement	Temp.	25 degreeC
Test	EMI Line conduction & Radiated emission	Humid.	40 %RH
		Tested by	S.Mukaide

1. Line conduction



2. Radiated emission

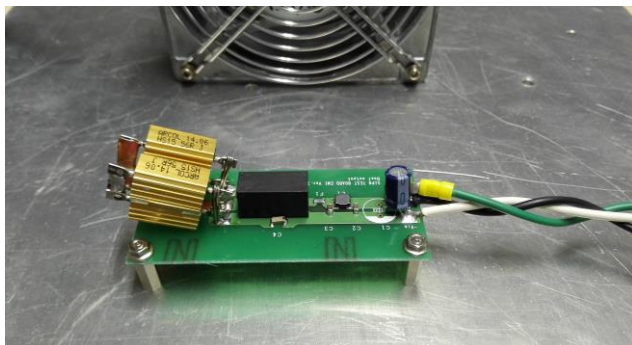


Conditions

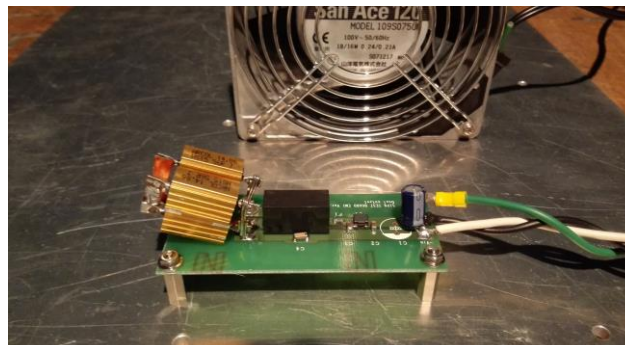
Test : EMI
Model Name : MGW6□□

○Photographs of Test Set-Up

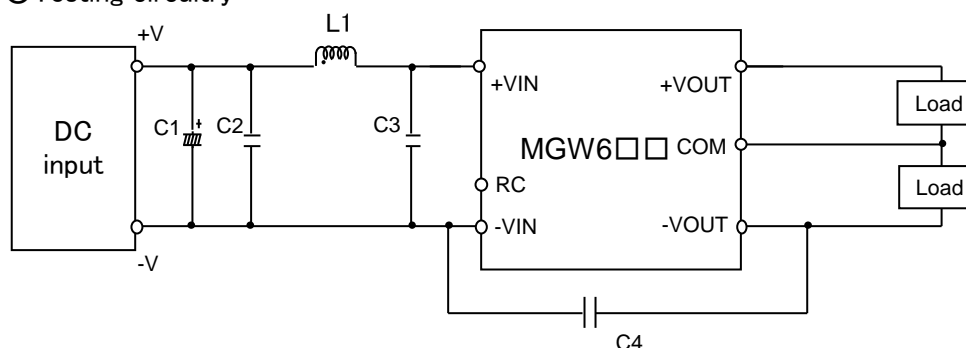
LINE CONDUCTION



RADIATED EMISSION



○Testing circuitry



- | | | | |
|------|----------|--------------------|---|
| C1 : | MGW605□□ | 25V 220 μ F | Electric capacitor (LXZseries NIPPON CHEMI-CON) |
| | MGW612□□ | 50V 100 μ F | Electric capacitor (LXZseries NIPPON CHEMI-CON) |
| | MGW624□□ | - | |
| | MGW648□□ | - | |
| C2 : | MGW605□□ | 16V 22 μ F | Ceramic capacitor (GRM31CC71C226K MURATA MANUFACTURING) |
| | MGW612□□ | 25V 10 μ F | Ceramic capacitor (GRM31CR71E106K MURATA MANUFACTURING) |
| | MGW624□□ | 50V 4.7 μ F | Ceramic capacitor (GRM31CR71H475K MURATA MANUFACTURING) |
| | MGW648□□ | 100V 2.2 μ F | Ceramic capacitor (GRM31CC72A225K MURATA MANUFACTURING) |
| C3 : | MGW605□□ | - | |
| | MGW612□□ | 25V 10 μ F | Ceramic capacitor (GRM31CR71E106K MURATA MANUFACTURING) |
| | MGW624□□ | 50V 4.7 μ F | Ceramic capacitor (GRM31CR71H475K MURATA MANUFACTURING) |
| | MGW648□□ | 100V 2.2 μ F | Ceramic capacitor (GRM31CC72A225K MURATA MANUFACTURING) |
| C4 : | MGW605□□ | 2kV 470pF | Ceramic capacitor (GR442QR73D471K MURATA MANUFACTURING) |
| | MGW612□□ | 2kV 470pF | Ceramic capacitor (GR442QR73D471K MURATA MANUFACTURING) |
| | MGW624□□ | 2kV 470pF | Ceramic capacitor (GR442QR73D471K MURATA MANUFACTURING) |
| | MGW648□□ | 2kV 1000pF | Ceramic capacitor (GR442QR73D102K MURATA MANUFACTURING) |
| L1 : | MGW605□□ | 3000mA 1.5 μ H | Inductor(LQH5BPN1R5NT0 MURATA MANUFACTURING) |
| | MGW612□□ | 2600mA 2.2 μ H | Inductor(LQH5BPN2R2NT0 MURATA MANUFACTURING) |
| | MGW624□□ | 1600mA 10 μ H | Inductor(LQH5BPN100MT0 MURATA MANUFACTURING) |
| | MGW648□□ | 1050mA 22 μ H | Inductor(LQH5BPN220MT0 MURATA MANUFACTURING) |