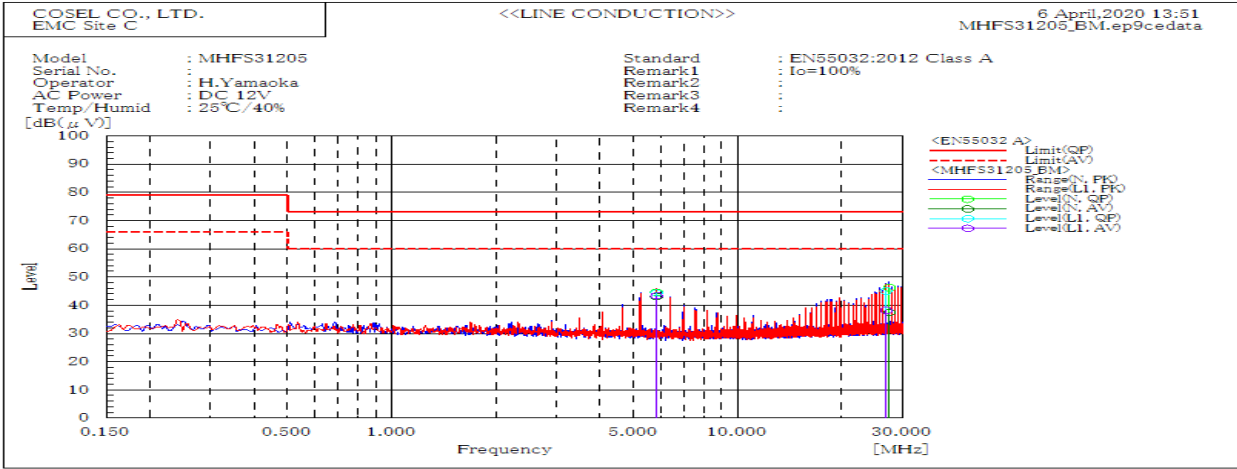
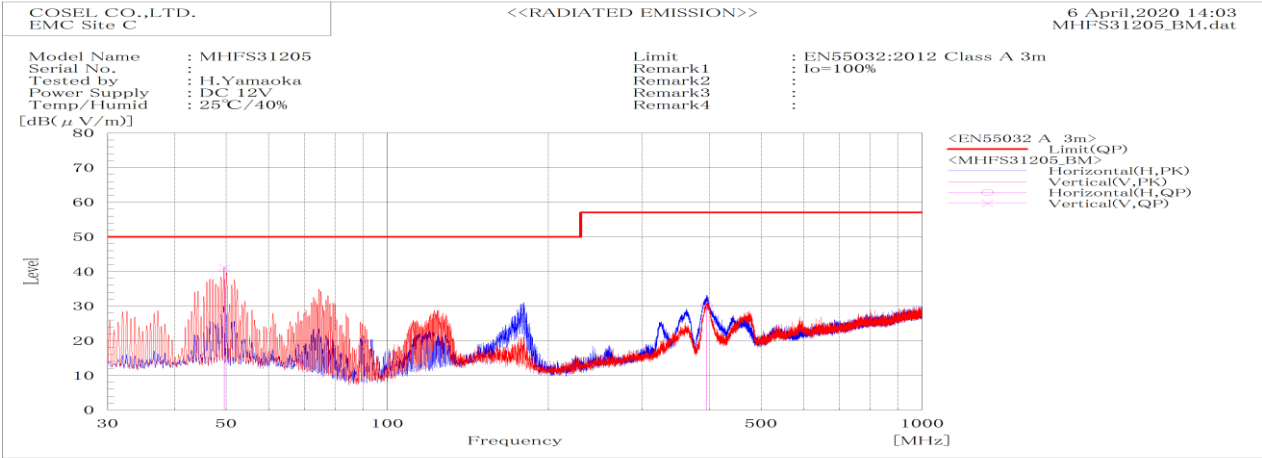


DATA SHEET		Date	04-Jun-20
Model	MHFS31205	Temp.	25 degreeC
Test	EMI Line conduction & Radiated emission	Humid.	40 %RH
		Tested by	H.Yamaoka



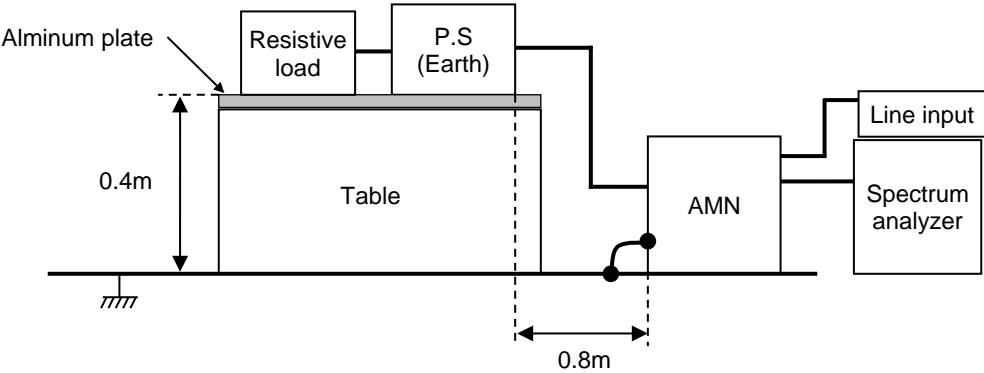
Frequency MHz	Line	Level dB(μV)		Limit dB(μV)		Margin dB		Pass/Fail	Remark
		QP	AV	QP	AV	QP	AV		
26.776	L1	45.1	38.1	73	60	27.9	21.9	Pass	
5.821	L1	44.4	43.4	73	60	28.6	16.6	Pass	
27.374	N	46.3	37.5	73	60	26.7	22.5	Pass	
5.821	N	44.6	43.1	73	60	28.4	16.9	Pass	



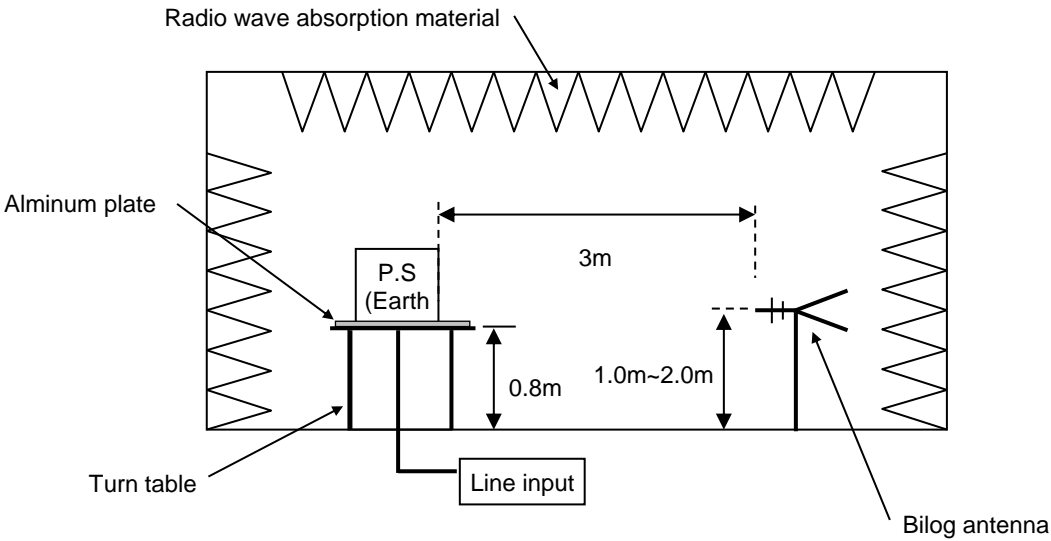
Frequency MHz	Polarization	Stability	Level dB(μV/m)	Limit dB(μV/m)	Margin dB	Pass/Fail	Height cm	Angle deg	Remark
			QP	QP	QP				
49.534	V	Stable	41.2	50	8.8	Pass	100.2	298.3	
395.198	H	Stable	30.2	57	26.8	Pass	100.4	10	

DATA SHEET		Date	04-Jun-20
Model	Circuit used for measurement	Temp.	25 degreeC
Test	EMI Line conduction & Radiated emission	Humid.	40 %RH
		Tested by	H.Yamaoka

1. Line conduction



2. Radiated emission

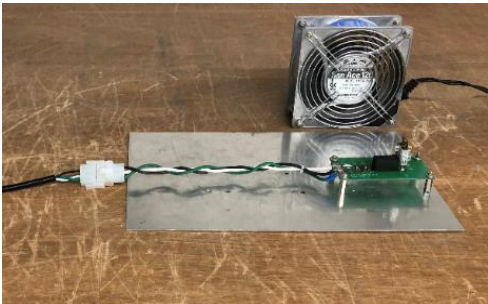


Conditions

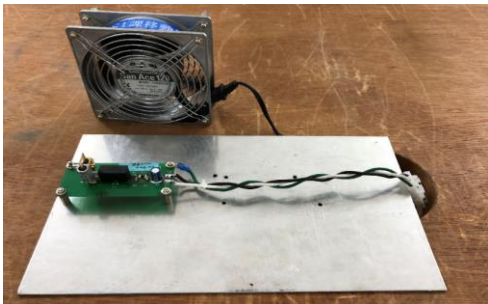
Test : EMI
Model Name: MHFS3□□

○Photographs of Test Set-Up

LINE CONDUCTION



RADIATED EMISSION



○Testing circuitry

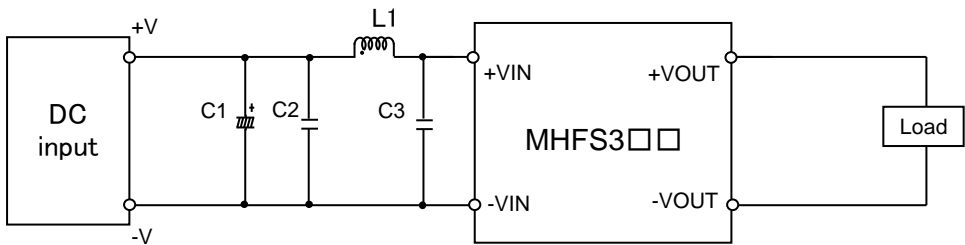


Fig.1 Testing circuitry

C1 :	MHFS312□□	50V 100μ F Electric capacitor (LXZseries NIPPON CHEMI-CON)
	MHFS324□□	-
	MHFS348□□	-
C2 :	MHFS312□□	25V 10μ F Ceramic capacitor (GRM31CR71E106K MURATA MANUFACTURING)
	MHFS324□□	50V 4.7μ F Ceramic capacitor (GRM31CR71H475K MURATA MANUFACTURING)
	MHFS348□□	100V 2.2μ F Ceramic capacitor (HMK316AC7225KLHTE TAIYO YUDEN)
C3 :	MHFS312□□	25V 10μ F Ceramic capacitor (GRM31CR71E106K MURATA MANUFACTURING)
	MHFS324□□	50V 4.7μ F Ceramic capacitor (GRM31CR71H475K MURATA MANUFACTURING)
	MHFS348□□	100V 2.2μ F Ceramic capacitor (HMK316AC7225KLHTE TAIYO YUDEN)
L1 :	MHFS312□□	1200mA 4.7μ H Inductor(LQH32PN4R7NNCL MURATA MANUFACTURING)
	MHFS324□□	900mA 10μ H Inductor(LQH32PN100MNCL MURATA MANUFACTURING)
	MHFS348□□	550mA 22μ H Inductor(LQH32PN220MNCL MURATA MANUFACTURING)