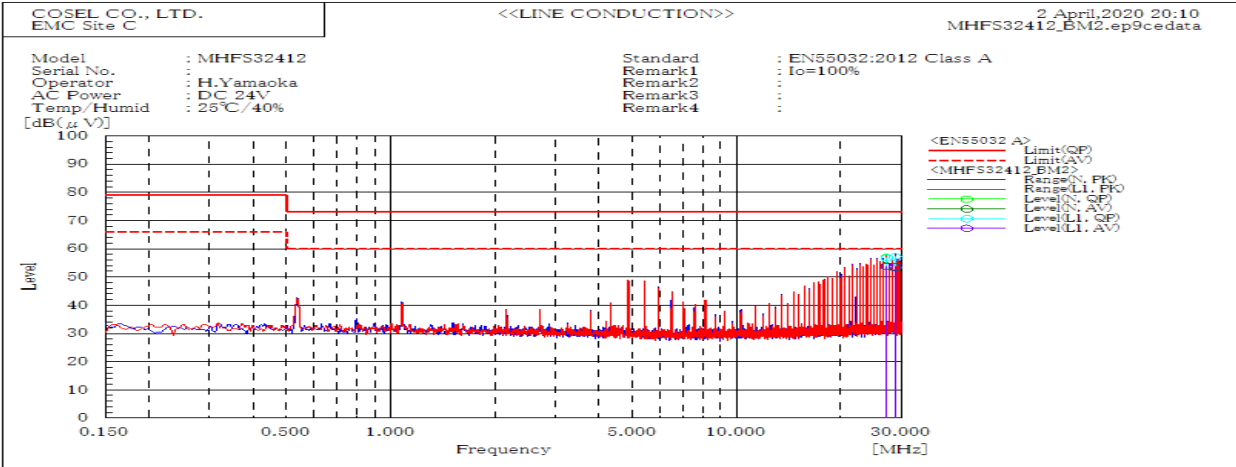
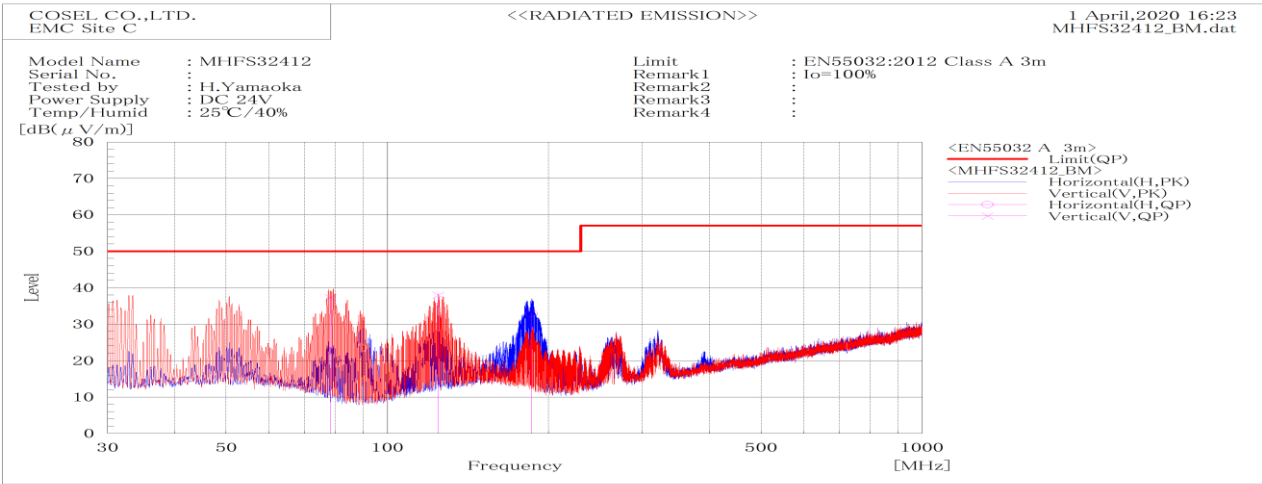


DATA SHEET		Date	04-Jun-20
Model	MHFS32412	Temp.	25 degreeC
Test	EMI Line conduction & Radiated emission	Humid.	40 %RH
		Tested by	H.Yamaoka



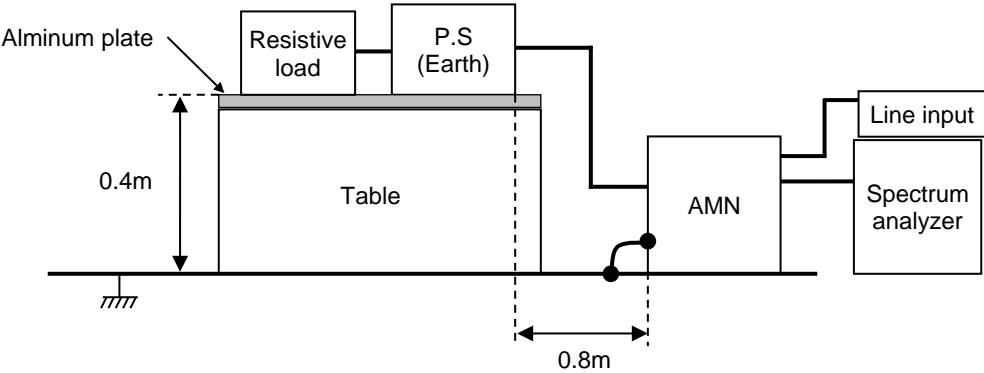
Frequency MHz	Line	Level dB(μV)		Limit dB(μV)		Margin dB		Pass/Fail	Remark
		QP	AV	QP	AV	QP	AV		
28.668	L1	57.2	53.6	73	60	15.8	6.4	Pass	
27.05	L1	56.8	53.8	73	60	16.2	6.2	Pass	
28.673	N	57.2	53.3	73	60	15.8	6.7	Pass	
27.052	N	56.9	54	73	60	16.1	6	Pass	



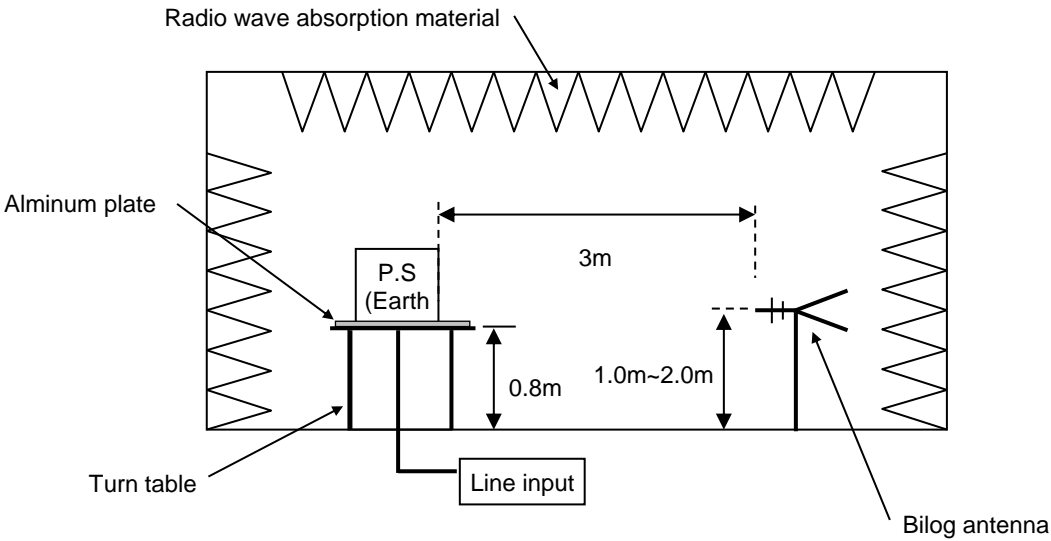
Frequency MHz	Polarization	Stability	Level dB(μV/m)		Limit dB(μV/m)	Margin dB	Pass/Fail	Height cm	Angle deg	Remark
			QP	QP		QP				
78.26	V	Stable	37.2	50	12.8	Pass	100	309.4		
124.627	V	Stable	38	50	12	Pass	100	174.4		
186.155	H	Stable	32.9	50	17.1	Pass	199.7	0		

DATA SHEET		Date	04-Jun-20
Model	Circuit used for measurement	Temp.	25 degreeC
Test	EMI Line conduction & Radiated emission	Humid.	40 %RH
		Tested by	H.Yamaoka

1. Line conduction



2. Radiated emission

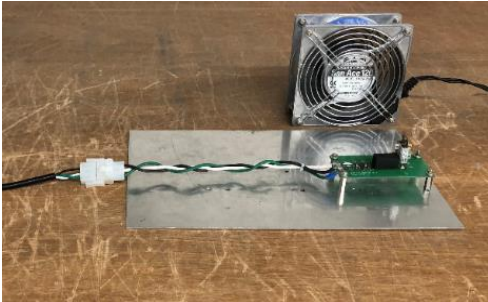


Conditions

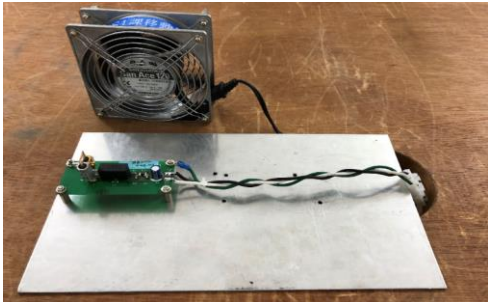
Test : EMI
Model Name: MHFS3□□

○Photographs of Test Set-Up

LINE CONDUCTION



RADIATED EMISSION



○Testing circuitry

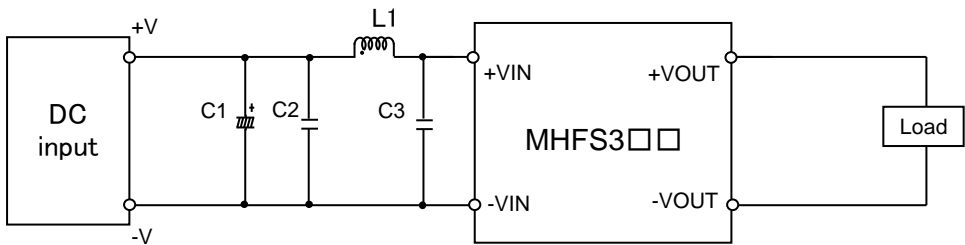


Fig.1 Testing circuitry

C1 :	MHFS312□□	50V 100μ F Electric capacitor (LXZseries NIPPON CHEMI-CON)
	MHFS324□□	-
	MHFS348□□	-
C2 :	MHFS312□□	25V 10μ F Ceramic capacitor (GRM31CR71E106K MURATA MANUFACTURING)
	MHFS324□□	50V 4.7μ F Ceramic capacitor (GRM31CR71H475K MURATA MANUFACTURING)
	MHFS348□□	100V 2.2μ F Ceramic capacitor (HMK316AC7225KLHTE TAIYO YUDEN)
C3 :	MHFS312□□	25V 10μ F Ceramic capacitor (GRM31CR71E106K MURATA MANUFACTURING)
	MHFS324□□	50V 4.7μ F Ceramic capacitor (GRM31CR71H475K MURATA MANUFACTURING)
	MHFS348□□	100V 2.2μ F Ceramic capacitor (HMK316AC7225KLHTE TAIYO YUDEN)
L1 :	MHFS312□□	1200mA 4.7μ H Inductor(LQH32PN4R7NNCL MURATA MANUFACTURING)
	MHFS324□□	900mA 10μ H Inductor(LQH32PN100MNCL MURATA MANUFACTURING)
	MHFS348□□	550mA 22μ H Inductor(LQH32PN220MNCL MURATA MANUFACTURING)