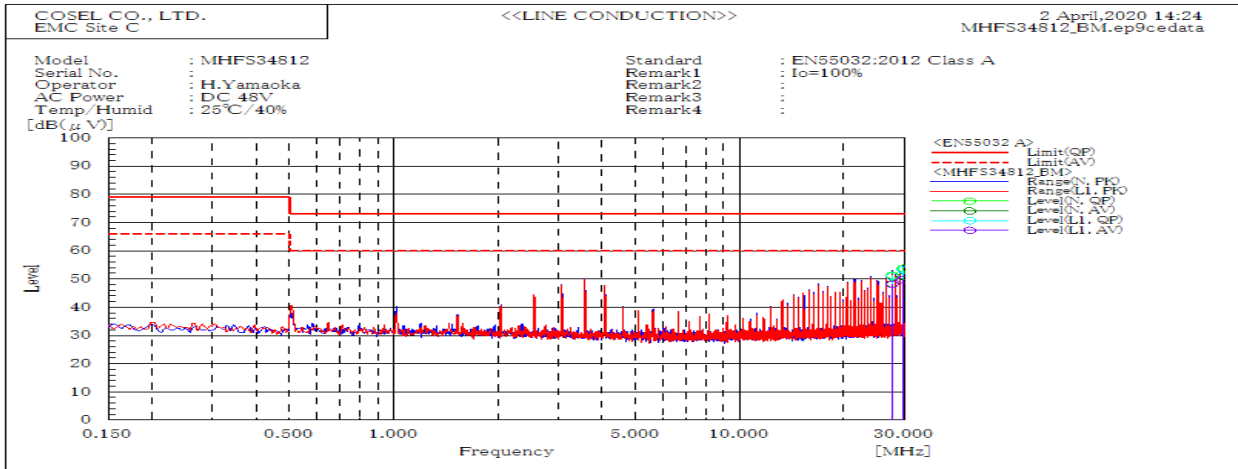
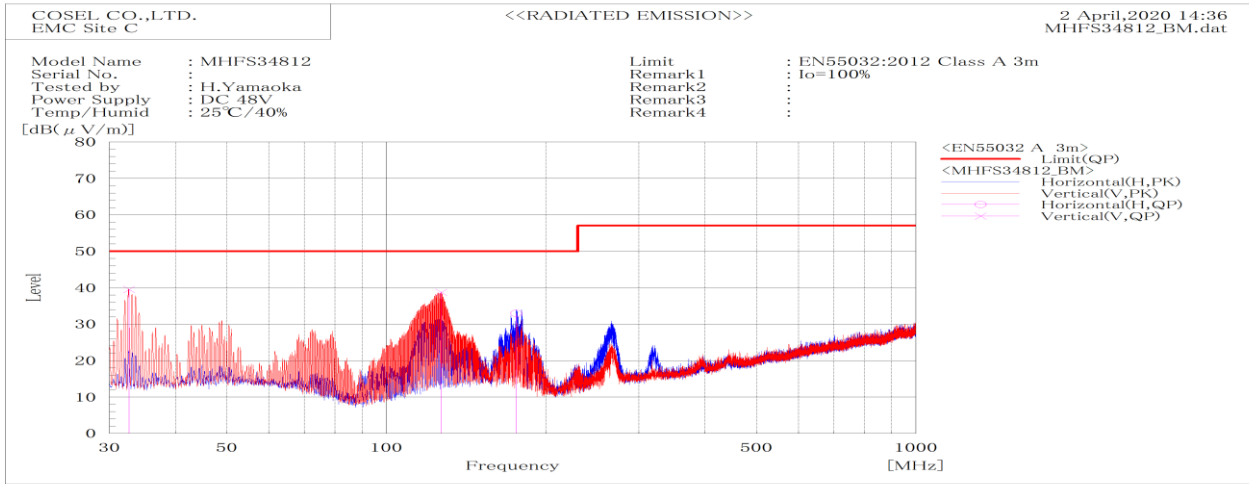


DATA SHEET		Date	04-Jun-20
Model	MHFS34812	Temp.	25 degreeC
Test	EMI Line conduction & Radiated emission	Humid.	40 %RH
		Tested by	H.Yamaoka



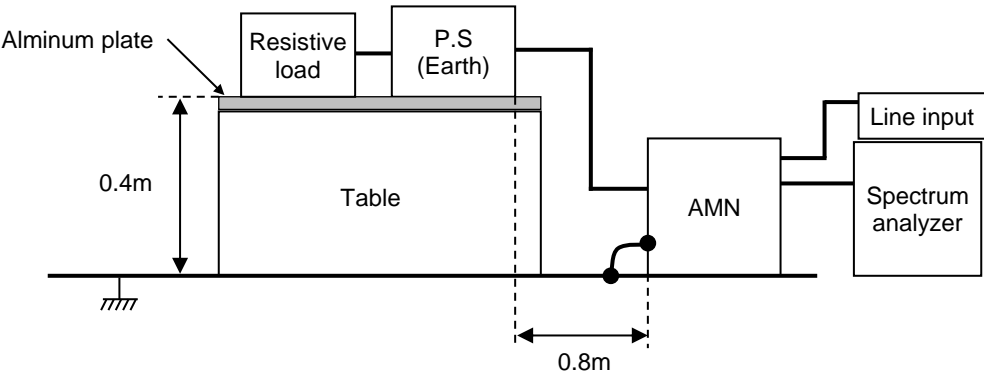
Frequency	Line	Level		Limit		Margin		Pass/Fail	Remark
MHz		dB(μV)		dB(μV)		dB			
		QP	AV	QP	AV	QP	AV		
27.548	L1	51	48.1	73	60	22	11.9	Pass	
29.586	L1	53.2	49.8	73	60	19.8	10.2	Pass	
27.543	N	51.3	48.3	73	60	21.7	11.7	Pass	
29.581	N	53.9	50.8	73	60	19.1	9.2	Pass	



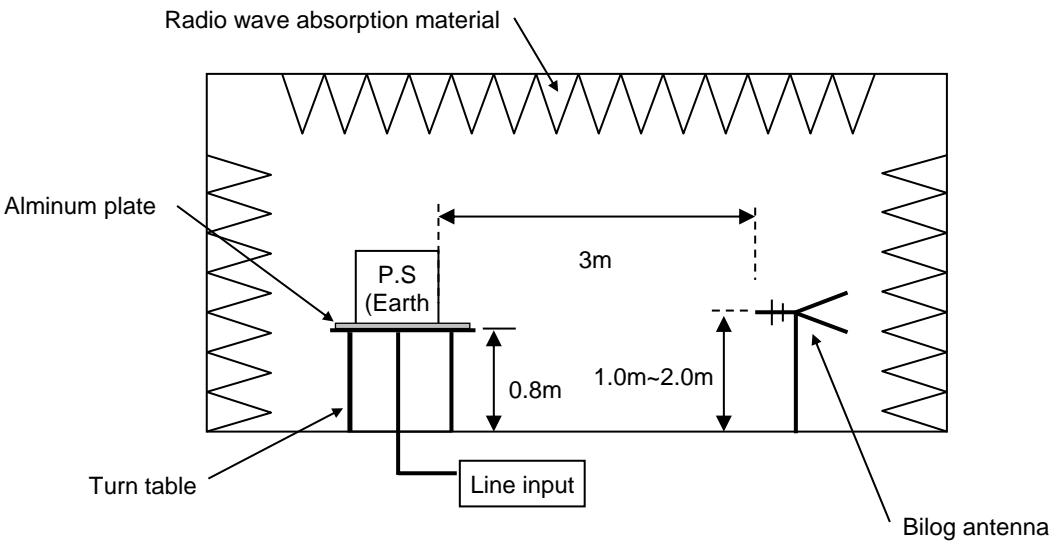
Frequency MHz	Polarization	Stability	Level	Limit	Margin	Pass/Fail	Height cm	Angle deg	Remark
			dB(μV/m) QP	dB(μV/m) QP	dB QP				
176.015	H	Stable	32.9	50	17.1	Pass	194.4	4	
32.656	V	Stable	39.5	50	10.5	Pass	100	95.4	
127.024	V	Stable	38.7	50	11.3	Pass	114	99	

DATA SHEET		Date	04-Jun-20
Model	Circuit used for measurement	Temp.	25 degreeC
Test	EMI Line conduction & Radiated emission	Humid.	40 %RH
		Tested by	H.Yamaoka

1. Line conduction



2. Radiated emission

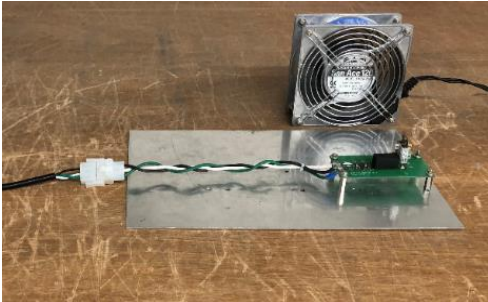


Conditions

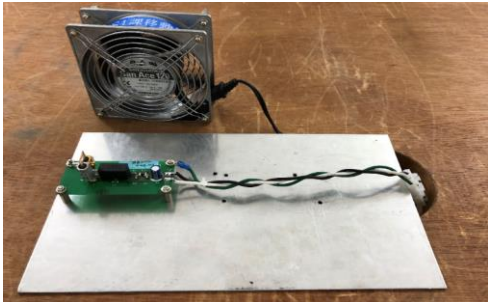
Test : EMI
Model Name: MHFS3□□

○Photographs of Test Set-Up

LINE CONDUCTION



RADIATED EMISSION



○Testing circuitry

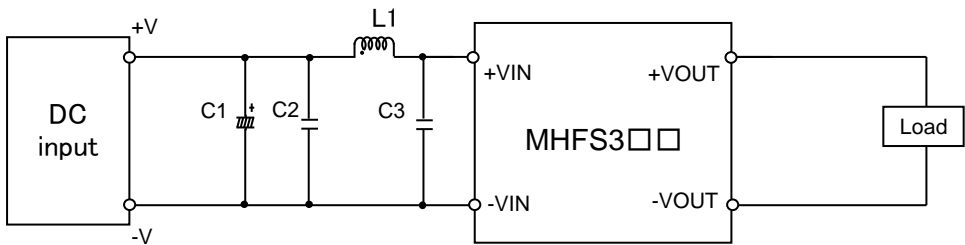


Fig.1 Testing circuitry

C1 :	MHFS312□□	50V 100μ F Electric capacitor (LXZseries NIPPON CHEMI-CON)
	MHFS324□□	-
	MHFS348□□	-
C2 :	MHFS312□□	25V 10μ F Ceramic capacitor (GRM31CR71E106K MURATA MANUFACTURING)
	MHFS324□□	50V 4.7μ F Ceramic capacitor (GRM31CR71H475K MURATA MANUFACTURING)
	MHFS348□□	100V 2.2μ F Ceramic capacitor (HMK316AC7225KLHTE TAIYO YUDEN)
C3 :	MHFS312□□	25V 10μ F Ceramic capacitor (GRM31CR71E106K MURATA MANUFACTURING)
	MHFS324□□	50V 4.7μ F Ceramic capacitor (GRM31CR71H475K MURATA MANUFACTURING)
	MHFS348□□	100V 2.2μ F Ceramic capacitor (HMK316AC7225KLHTE TAIYO YUDEN)
L1 :	MHFS312□□	1200mA 4.7μ H Inductor(LQH32PN4R7NNCL MURATA MANUFACTURING)
	MHFS324□□	900mA 10μ H Inductor(LQH32PN100MNCL MURATA MANUFACTURING)
	MHFS348□□	550mA 22μ H Inductor(LQH32PN220MNCL MURATA MANUFACTURING)