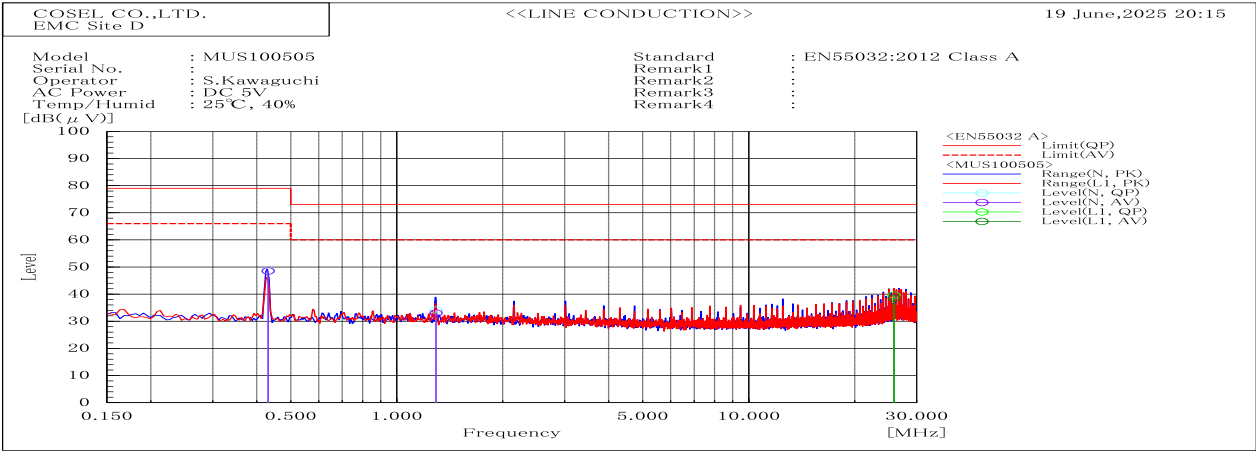
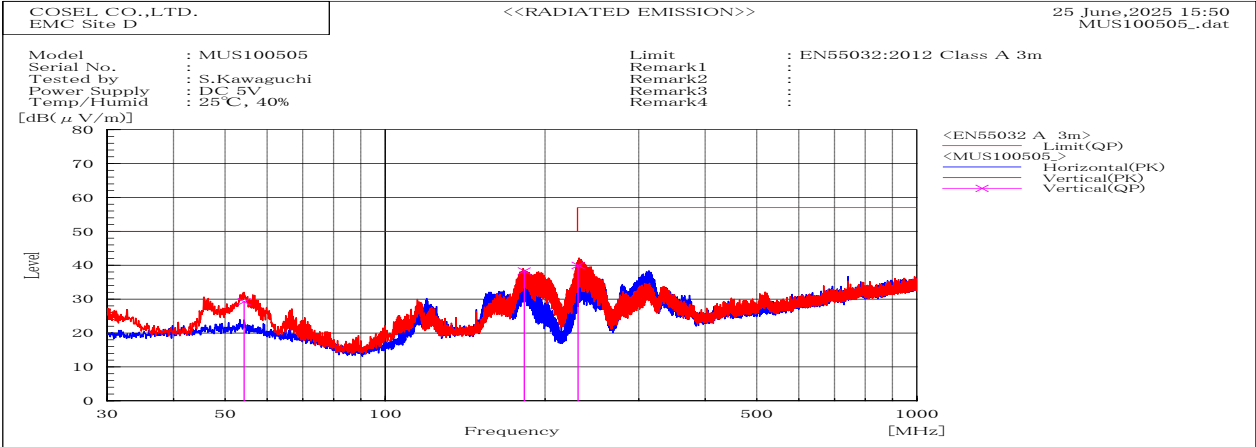


| DATA SHEET | | Date | 25-Jun-25 |
|------------|--|-----------|-------------|
| Model | MUS100505 | Temp. | 25 degreeC |
| Test | EMI Line conduction & Radiated emission | Humid. | 40 %RH |
| | | Tested by | S.Kawaguchi |



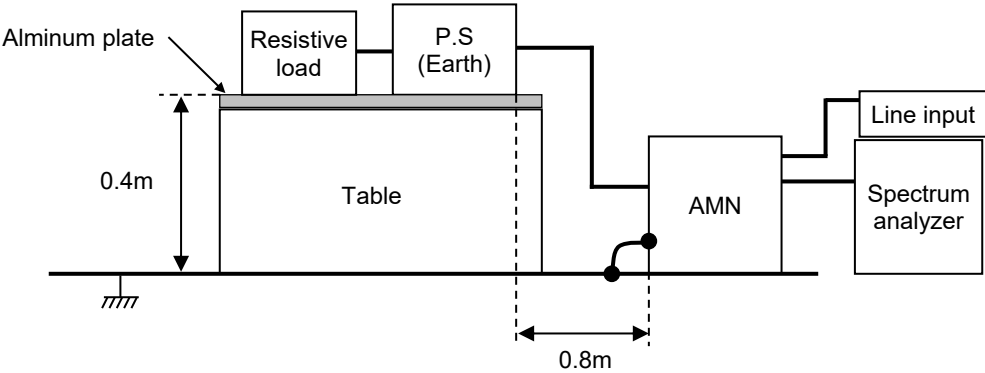
| Frequency | Line | Level | | Limit | | Margin | | Pass/Fail | Remark |
|-----------|------|--------|------|--------|----|--------|------|-----------|--------|
| MHz | | dB(μV) | | dB(μV) | | dB | | | |
| | | QP | AV | QP | AV | QP | AV | | |
| 0.431 | N | 48.7 | 48.5 | 79 | 66 | 30.3 | 17.5 | Pass | |
| 1.293 | N | 34.1 | 33 | 73 | 60 | 38.9 | 27 | Pass | |
| 25.861 | L1 | 39.7 | 38.4 | 73 | 60 | 33.3 | 21.6 | Pass | |



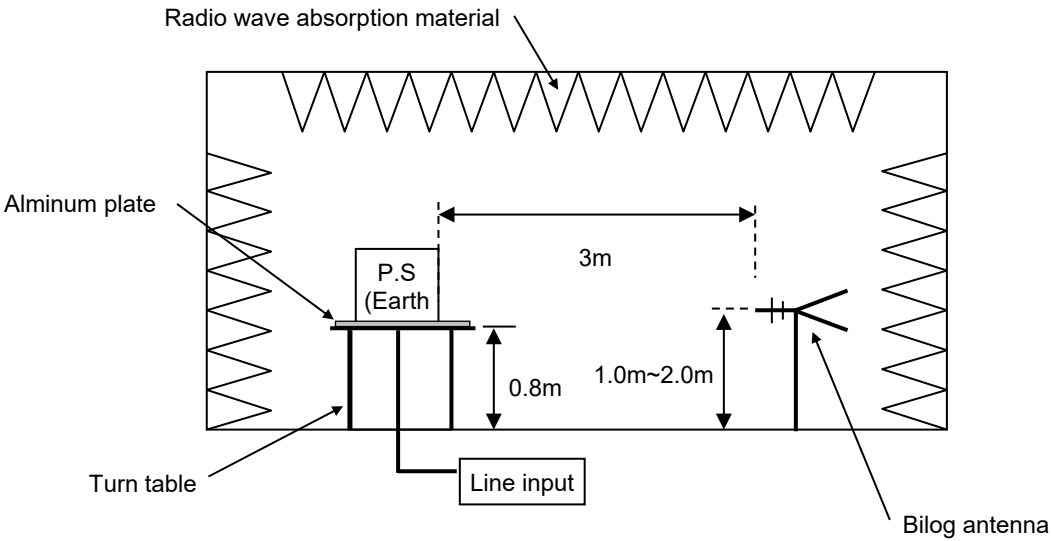
| Frequency MHz | Polarization | Stability | Level | Limit | Margin | Pass/Fail | Height cm | Angle deg | Remark |
|------------------|--------------|-----------|----------------|----------------|----------|-----------|--------------|--------------|--------|
| | | | dB(uV/m) QP | dB(uV/m) QP | dB QP | | | | |
| 182.735 | V | Stable | 38.3 | 50 | 11.7 | Pass | 101.7 | 44.5 | |
| 230.625 | V | Stable | 40 | 57 | 17 | Pass | 100 | 229.5 | |
| 54.29 | V | Stable | 29.3 | 50 | 20.7 | Pass | 100.2 | 253.2 | |

| DATA SHEET | | Date | 25-Jun-25 |
|------------|--|-----------|-------------|
| Model | Circuit used for measurement | Temp. | 25 degreeC |
| Test | EMI Line conduction & Radiated emission | Humid. | 40 %RH |
| | | Tested by | S.Kawaguchi |

1. Line conduction



2. Radiated emission



Conditions

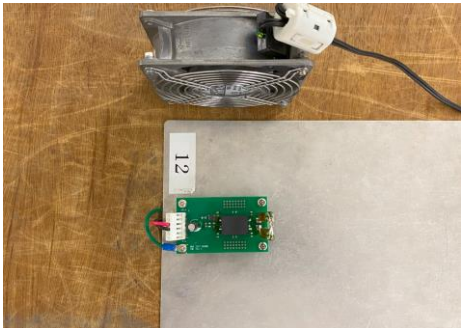
Test : EMI
 Model Name: MUS10□□

○Photographs of Test Set-Up

LINE CONDUCTION



RADIATED EMISSION



○Testing circuitry

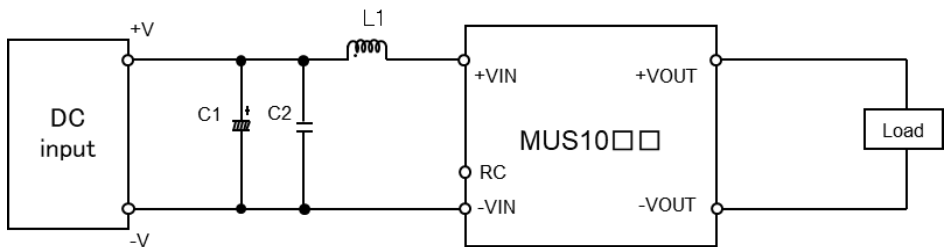


Fig.1 MUS10□□ Testing circuitry

| | | |
|------|----------|---|
| C1 : | MUS1005□ | 25V 1500 μ F Electric capacitor (LXZseries NIPPON CHEMI-CON) |
| | MUS1012□ | 50V 100 μ F Electric capacitor (UPWseries NICHICON) |
| | MUS1024□ | — |
| | MUS1048□ | — |
| C2 : | MUS1005□ | 16V 22 μ F Ceramic capacitor (GRM31CC71C226M MURATA MANUFACTURING) |
| | MUS1012□ | 25V 10 μ F Ceramic capacitor (CM316X7R106K25AT KYOCERA) |
| | MUS1024□ | 50V 4.7 μ F Ceramic capacitor (GRM31CR71H475K MURATA MANUFACTURING) |
| | MUS1048□ | 100V 2.2 μ F Ceramic capacitor (C3216X7S2A225KT TDK) |
| L1 : | MUS1005□ | 5000mA 2.2 μ H Inductor(LQH5BPN2R2N38 MURATA MANUFACTURING) |
| | MUS1012□ | 3500mA 4.7 μ H Inductor(LQH5BPN4R7N38 MURATA MANUFACTURING) |
| | MUS1024□ | 1600mA 22 μ H Inductor(LQH5BPN220M38 MURATA MANUFACTURING) |
| | MUS1048□ | 1100mA 47 μ H Inductor(LQH5BPN470M38 MURATA MANUFACTURING) |