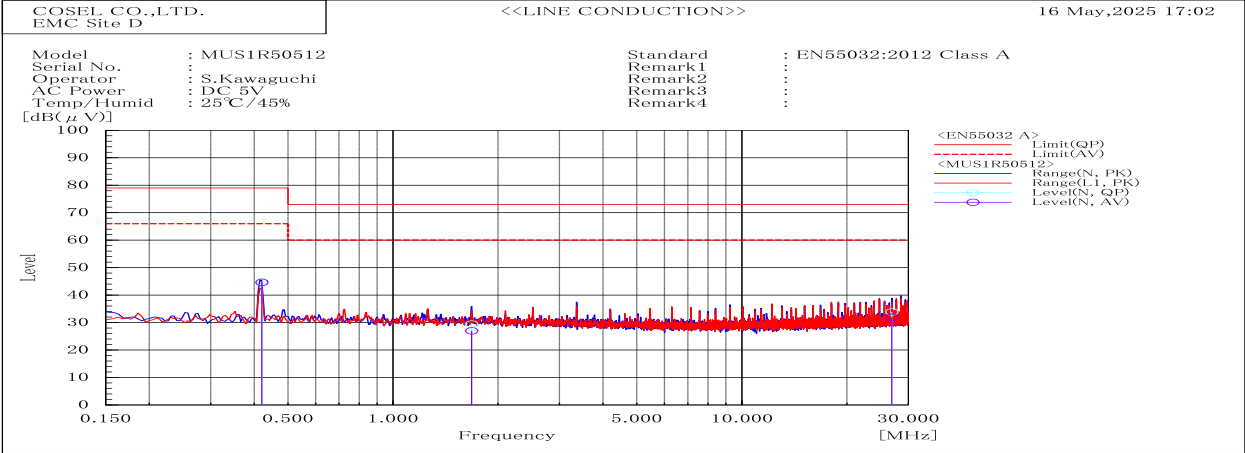
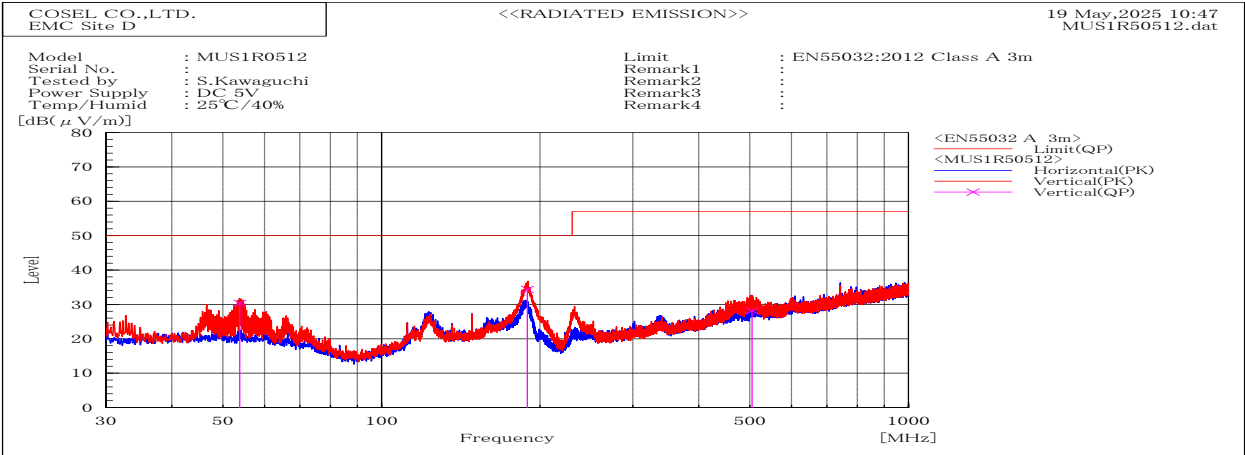


| DATA SHEET |  | Date      | 19-May-25   |
|------------|--|-----------|-------------|
| Model      | MUS1R50512                                 | Temp.     | 25 degreeC  |
| Test       | EMI<br>Line conduction & Radiated emission | Humid.    | 45 %RH      |
|            |  | Tested by | S.Kawaguchi |



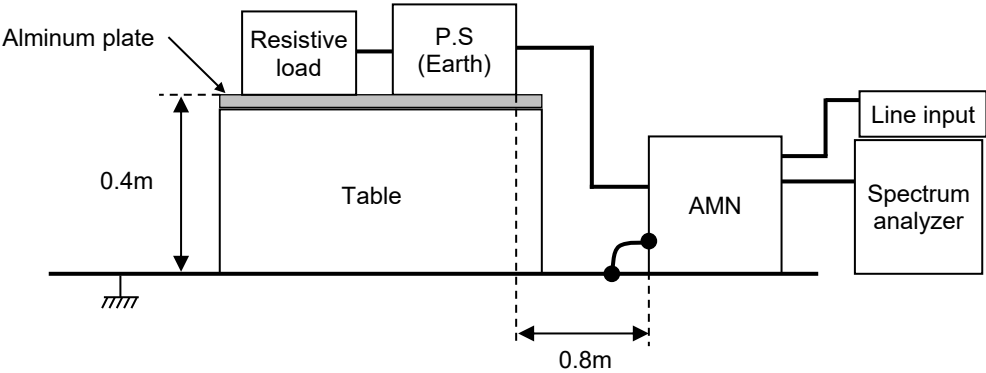
| Frequency | Line | Level  |      | Limit  |    | Margin |      | Pass/Fail | Remark |
|-----------|------|--------|------|--------|----|--------|------|-----------|--------|
| MHz       |      | dB(μV) |      | dB(μV) |    | dB     |      |           |        |
|           |      | QP     | AV   | QP     | AV | QP     | AV   |           |        |
| 0.42      | N    | 44.8   | 44.6 | 79     | 66 | 34.2   | 21.4 | Pass      |        |
| 1.68      | N    | 29.5   | 27   | 73     | 60 | 43.5   | 33   | Pass      |        |
| 26.898    | N    | 33.9   | 31.9 | 73     | 60 | 39.1   | 28.1 | Pass      |        |



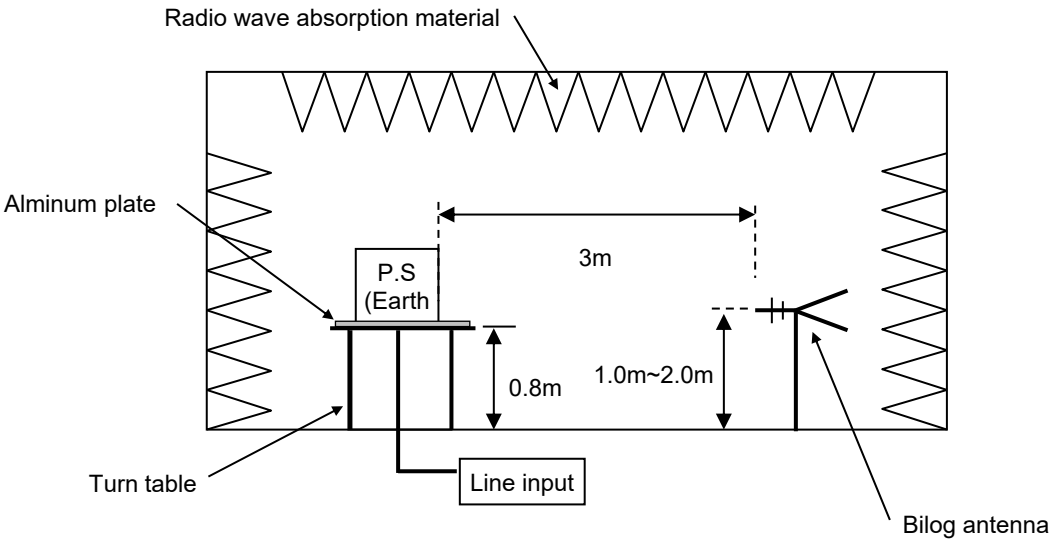
| Frequency<br>MHz | Polarization | Stability | Level    | Limit    | Margin | Pass/Fail | Height<br>cm | Angle<br>deg | Remark |
|------------------|--------------|-----------|----------|----------|--------|-----------|--------------|--------------|--------|
|                  |              |           | dB(uV/m) | dB(uV/m) | dB     |           |              |              |        |
|                  |              |           | QP       | QP       | QP     |           |              |              |        |
| 189.187          | V            | Stable    | 34.4     | 50       | 15.6   | Pass      | 100          | 0            |        |
| 53.813           | V            | Stable    | 30.3     | 50       | 19.7   | Pass      | 100.2        | 191.4        |        |
| 504.993          | V            | Stable    | 28.2     | 57       | 28.8   | Pass      | 100.4        | 174.6        |        |

| DATA SHEET |  | Date      | 19-May-25   |
|------------|--|-----------|-------------|
| Model      | Circuit used for measurement               | Temp.     | 25 degreeC  |
| Test       | EMI<br>Line conduction & Radiated emission | Humid.    | 45 %RH      |
|            |  | Tested by | S.Kawaguchi |

1. Line conduction



2. Radiated emission

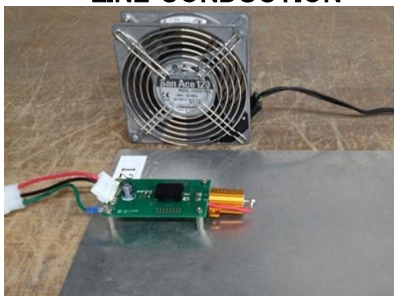


**Conditions**

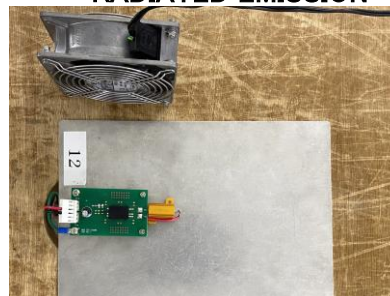
Test : EMI  
Model Name: MUS1R5□□

○Photographs of Test Set-Up

**LINE CONDUCTION**



**RADIATED EMISSION**



○Testing circuitry

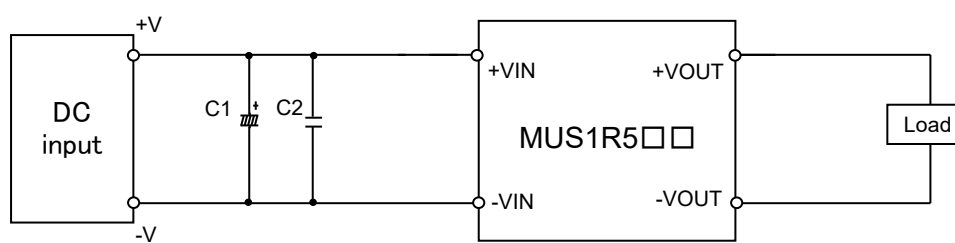


Fig.1 MUS1R505□, MUS1R512□, MUS1R524□ Testing circuitry

- |      |           |                 |   |
|------|-----------|-----------------|---|
| C1 : | MUS1R505□ | 16V 220 $\mu$ F | Electric capacitor (UPWseries NICHICON)                 |
|      | MUS1R512□ | 50V 100 $\mu$ F | Electric capacitor (UPWseries NICHICON)                 |
|      | MUS1R524□ | -               |   |
| C2 : | MUS1R505□ | 16V 22 $\mu$ F  | Ceramic capacitor (GRM31CC71C226M MURATA MANUFACTURING) |
|      | MUS1R512□ | 25V 22 $\mu$ F  | Ceramic capacitor (C3216JB1E226MT TDK)                  |
|      | MUS1R524□ | 50V 10 $\mu$ F  | Ceramic capacitor (C3216X7R1H106KT TDK)                 |

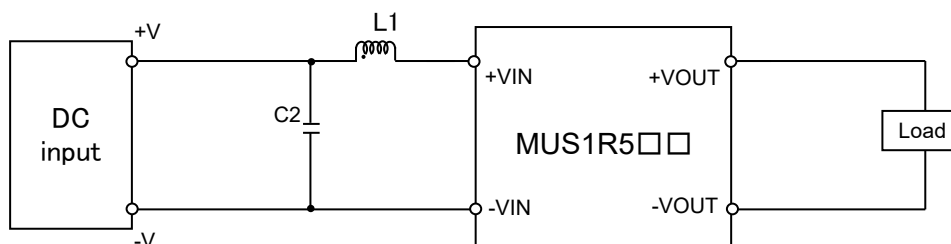


Fig.2 MUS1R548□ Testing circuitry

- |      |           |                  |  |
|------|-----------|------------------|--|
| C2 : | MUS1R548□ | 100V 2.2 $\mu$ F | Ceramic capacitor (C3216X7S2A225KT TDK)        |
| L1 : | MUS1R548□ | 520mA 15 $\mu$ H | Inductor (LQH32PN150MN0L MURATA MANUFACTURING) |