

# TEST DATA OF MUS61212

Regulated DC Power Supply  
May.8. 2025

Approved by : Kenichi Tsukada  
Design Manager

Prepared by : Yoshihiko Saeki  
Design Engineer

**COSEL CO.,LTD.**

## CONTENTS

1.Input Current (by Load Current) . . . . .	1
2.Efficiency (by Load Current) . . . . .	2
3.Line Regulation . . . . .	3
4.Load Regulation . . . . .	4
5.Ripple-Noise . . . . .	4
6.Dynamic Load Response . . . . .	5
7.Rise and Fall Time . . . . .	6
8.Overcurrent Protection . . . . .	7
9.Ambient Temperature Drift . . . . .	8
10.Minimum Input Voltage for Regulated Output Voltage . . . . .	8
11.Figure of Testing Circuitry . . . . .	9

(Final Page 9)

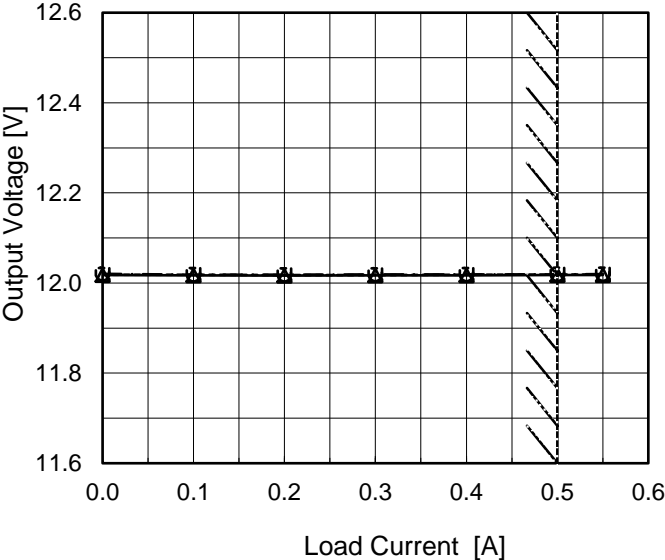
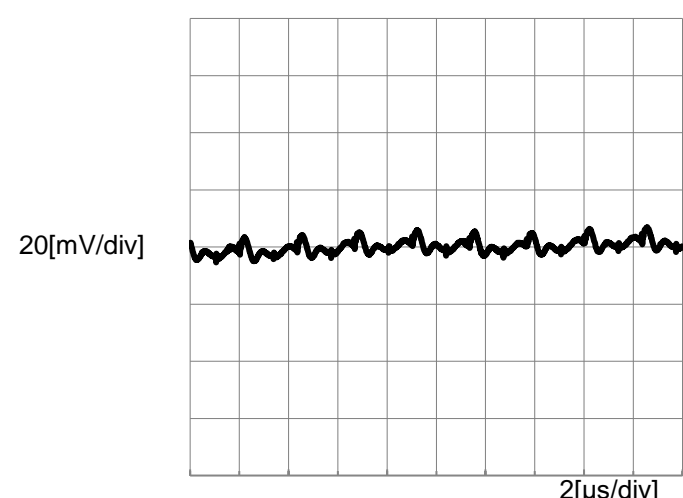


COSEL																																																																																																						
Model	MUS61212	Temperature 25°C																																																																																																				
Item	Efficiency (by Load Current)	Testing Circuitry Figure A																																																																																																				
Object																																																																																																						
1.Graph		2.Values																																																																																																				
<div><div><div>—△—</div><div>---□---</div><div>-·-○-·-</div></div><div><div>Input Volt. 9V</div><div>Input Volt. 12V</div><div>Input Volt. 18V</div></div></div> <table><thead><tr><th>Load Current [A]</th><th>9V Efficiency [%]</th><th>12V Efficiency [%]</th><th>18V Efficiency [%]</th></tr></thead><tbody><tr><td>0.00</td><td>-</td><td>-</td><td>-</td></tr><tr><td>0.10</td><td>80.3</td><td>78.1</td><td>75.7</td></tr><tr><td>0.20</td><td>85.5</td><td>84.7</td><td>83.0</td></tr><tr><td>0.30</td><td>86.9</td><td>87.1</td><td>85.3</td></tr><tr><td>0.40</td><td>87.3</td><td>88.0</td><td>87.2</td></tr><tr><td>0.50</td><td>87.2</td><td>88.1</td><td>87.7</td></tr><tr><td>0.55</td><td>87.1</td><td>88.1</td><td>87.9</td></tr><tr><td>--</td><td>-</td><td>-</td><td>-</td></tr><tr><td>--</td><td>-</td><td>-</td><td>-</td></tr><tr><td>--</td><td>-</td><td>-</td><td>-</td></tr><tr><td>--</td><td>-</td><td>-</td><td>-</td></tr></tbody></table> <p>Note: Slanted line shows the range of the rated load current.</p>		Load Current [A]	9V Efficiency [%]	12V Efficiency [%]	18V Efficiency [%]	0.00	-	-	-	0.10	80.3	78.1	75.7	0.20	85.5	84.7	83.0	0.30	86.9	87.1	85.3	0.40	87.3	88.0	87.2	0.50	87.2	88.1	87.7	0.55	87.1	88.1	87.9	--	-	-	-	--	-	-	-	--	-	-	-	--	-	-	-	<table><thead><tr><th rowspan="2">Load Current [A]</th><th colspan="3">Efficiency [%]</th></tr><tr><th>Input Volt. 9[V]</th><th>Input Volt. 12[V]</th><th>Input Volt. 18[V]</th></tr></thead><tbody><tr><td>0.00</td><td>-</td><td>-</td><td>-</td></tr><tr><td>0.10</td><td>80.3</td><td>78.1</td><td>75.7</td></tr><tr><td>0.20</td><td>85.5</td><td>84.7</td><td>83.0</td></tr><tr><td>0.30</td><td>86.9</td><td>87.1</td><td>85.3</td></tr><tr><td>0.40</td><td>87.3</td><td>88.0</td><td>87.2</td></tr><tr><td>0.50</td><td>87.2</td><td>88.1</td><td>87.7</td></tr><tr><td>0.55</td><td>87.1</td><td>88.1</td><td>87.9</td></tr><tr><td>--</td><td>-</td><td>-</td><td>-</td></tr><tr><td>--</td><td>-</td><td>-</td><td>-</td></tr><tr><td>--</td><td>-</td><td>-</td><td>-</td></tr><tr><td>--</td><td>-</td><td>-</td><td>-</td></tr></tbody></table>		Load Current [A]	Efficiency [%]			Input Volt. 9[V]	Input Volt. 12[V]	Input Volt. 18[V]	0.00	-	-	-	0.10	80.3	78.1	75.7	0.20	85.5	84.7	83.0	0.30	86.9	87.1	85.3	0.40	87.3	88.0	87.2	0.50	87.2	88.1	87.7	0.55	87.1	88.1	87.9	--	-	-	-	--	-	-	-	--	-	-	-	--	-	-	-
Load Current [A]	9V Efficiency [%]	12V Efficiency [%]	18V Efficiency [%]																																																																																																			
0.00	-	-	-																																																																																																			
0.10	80.3	78.1	75.7																																																																																																			
0.20	85.5	84.7	83.0																																																																																																			
0.30	86.9	87.1	85.3																																																																																																			
0.40	87.3	88.0	87.2																																																																																																			
0.50	87.2	88.1	87.7																																																																																																			
0.55	87.1	88.1	87.9																																																																																																			
--	-	-	-																																																																																																			
--	-	-	-																																																																																																			
--	-	-	-																																																																																																			
--	-	-	-																																																																																																			
Load Current [A]	Efficiency [%]																																																																																																					
	Input Volt. 9[V]	Input Volt. 12[V]	Input Volt. 18[V]																																																																																																			
0.00	-	-	-																																																																																																			
0.10	80.3	78.1	75.7																																																																																																			
0.20	85.5	84.7	83.0																																																																																																			
0.30	86.9	87.1	85.3																																																																																																			
0.40	87.3	88.0	87.2																																																																																																			
0.50	87.2	88.1	87.7																																																																																																			
0.55	87.1	88.1	87.9																																																																																																			
--	-	-	-																																																																																																			
--	-	-	-																																																																																																			
--	-	-	-																																																																																																			
--	-	-	-																																																																																																			

- 2 -

BC-12112

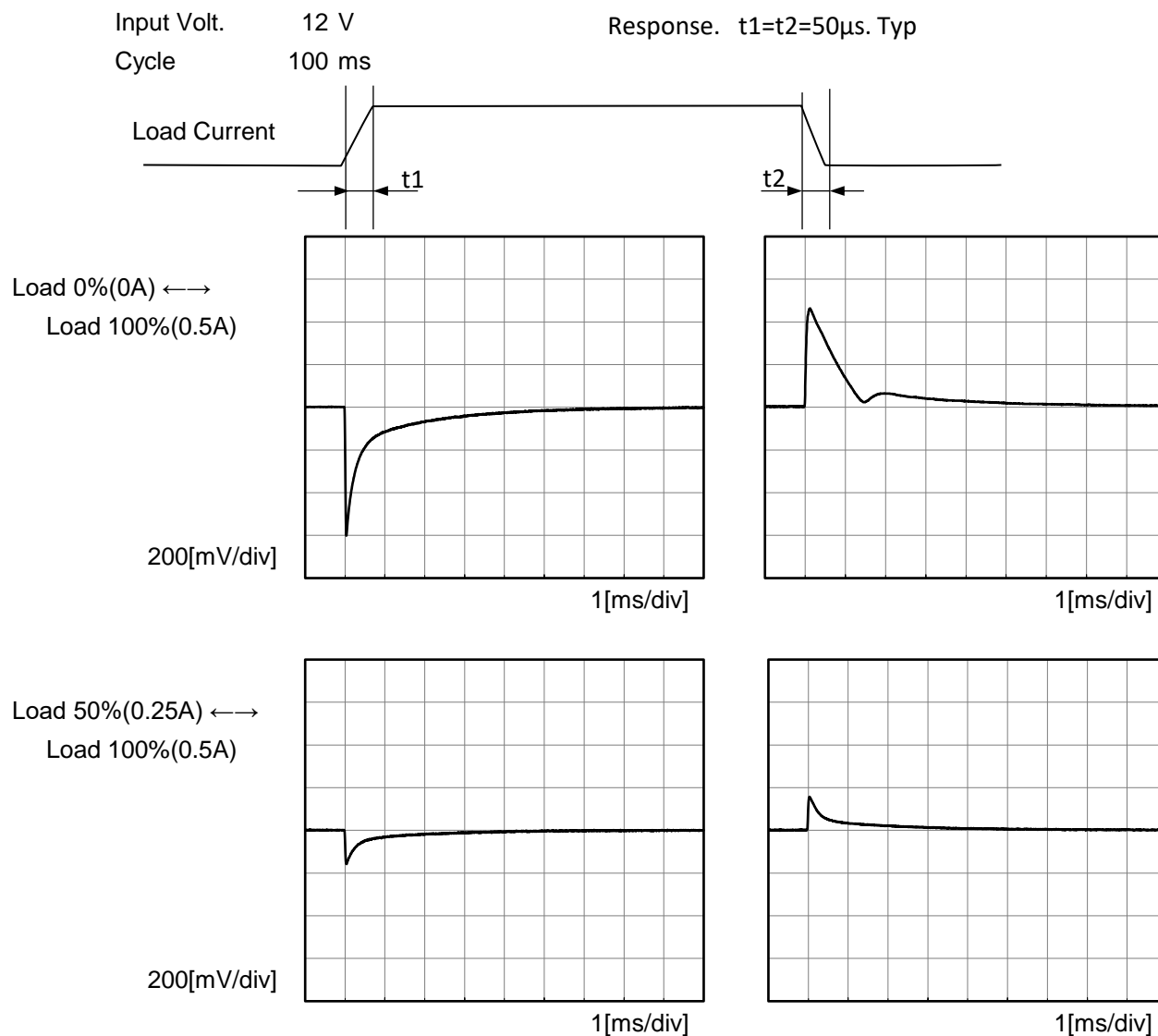
COSEL																																			
Model	MUS61212	Temperature 25°C Testing Circuitry Figure A																																	
Item	Line Regulation																																		
Object	+12V0.5A																																		
1.Graph		2.Values																																	
<div><div><div><div><div></div><div></div></div><div><div></div><div></div></div></div><div><div></div><div></div></div><div><div></div><div></div></div></div><div>Load 50%</div><div>Load 100%</div></div> <table><thead><tr><th rowspan="2">Input Voltage [V]</th><th colspan="2">Output Voltage [V]</th></tr><tr><th>Load 50%</th><th>Load 100%</th></tr></thead><tbody><tr><td>8</td><td>12.015</td><td>12.017</td></tr><tr><td>9</td><td>12.017</td><td>12.018</td></tr><tr><td>10</td><td>12.017</td><td>12.018</td></tr><tr><td>12</td><td>12.018</td><td>12.019</td></tr><tr><td>15</td><td>12.018</td><td>12.019</td></tr><tr><td>18</td><td>12.019</td><td>12.019</td></tr><tr><td>20</td><td>12.019</td><td>12.019</td></tr><tr><td>--</td><td>-</td><td>-</td></tr><tr><td>--</td><td>-</td><td>-</td></tr></tbody></table> <p>Note: Slanted line shows the range of the rated input voltage.</p>		Input Voltage [V]	Output Voltage [V]		Load 50%	Load 100%	8	12.015	12.017	9	12.017	12.018	10	12.017	12.018	12	12.018	12.019	15	12.018	12.019	18	12.019	12.019	20	12.019	12.019	--	-	-	--	-	-		
Input Voltage [V]	Output Voltage [V]																																		
	Load 50%	Load 100%																																	
8	12.015	12.017																																	
9	12.017	12.018																																	
10	12.017	12.018																																	
12	12.018	12.019																																	
15	12.018	12.019																																	
18	12.019	12.019																																	
20	12.019	12.019																																	
--	-	-																																	
--	-	-																																	

Model	MUS61212																																																					
Item	Load Regulation	Temperature	25°C																																																			
Object	+12V0.5A	Testing Circuitry	Figure A																																																			
1.Graph		2.Values																																																				
<div><div><div><div></div></div><div></div><div></div></div><div><div>Input Volt. 9V</div><div>Input Volt. 12V</div><div>Input Volt. 18V</div></div></div>  <p>Note: Slanted line shows the range of the rated load current.</p>		<table><tr><th rowspan="2">Load Current [A]</th><th colspan="3">Output Voltage [V]</th></tr><tr><th>Input Volt. 9[V]</th><th>Input Volt. 12[V]</th><th>Input Volt. 18[V]</th></tr><tr><td>0.00</td><td>12.018</td><td>12.019</td><td>12.020</td></tr><tr><td>0.10</td><td>12.017</td><td>12.018</td><td>12.019</td></tr><tr><td>0.20</td><td>12.017</td><td>12.018</td><td>12.019</td></tr><tr><td>0.30</td><td>12.017</td><td>12.018</td><td>12.019</td></tr><tr><td>0.40</td><td>12.017</td><td>12.018</td><td>12.019</td></tr><tr><td>0.50</td><td>12.018</td><td>12.019</td><td>12.019</td></tr><tr><td>0.55</td><td>12.018</td><td>12.019</td><td>12.020</td></tr><tr><td>--</td><td>--</td><td>--</td><td>--</td></tr><tr><td>--</td><td>--</td><td>--</td><td>--</td></tr><tr><td>--</td><td>--</td><td>--</td><td>--</td></tr><tr><td>--</td><td>--</td><td>--</td><td>--</td></tr></table>		Load Current [A]	Output Voltage [V]			Input Volt. 9[V]	Input Volt. 12[V]	Input Volt. 18[V]	0.00	12.018	12.019	12.020	0.10	12.017	12.018	12.019	0.20	12.017	12.018	12.019	0.30	12.017	12.018	12.019	0.40	12.017	12.018	12.019	0.50	12.018	12.019	12.019	0.55	12.018	12.019	12.020	--	--	--	--	--	--	--	--	--	--	--	--	--	--	--	--
Load Current [A]	Output Voltage [V]																																																					
	Input Volt. 9[V]	Input Volt. 12[V]	Input Volt. 18[V]																																																			
0.00	12.018	12.019	12.020																																																			
0.10	12.017	12.018	12.019																																																			
0.20	12.017	12.018	12.019																																																			
0.30	12.017	12.018	12.019																																																			
0.40	12.017	12.018	12.019																																																			
0.50	12.018	12.019	12.019																																																			
0.55	12.018	12.019	12.020																																																			
--	--	--	--																																																			
--	--	--	--																																																			
--	--	--	--																																																			
--	--	--	--																																																			
Item	Ripple-Noise	Temperature	25°C																																																			
Object	+12V0.5A	Testing Circuitry	Figure B																																																			
1.Graph																																																						
<div><div>Input Voltage 12V</div><div>Load 100%</div></div> 																																																						

- 4 -

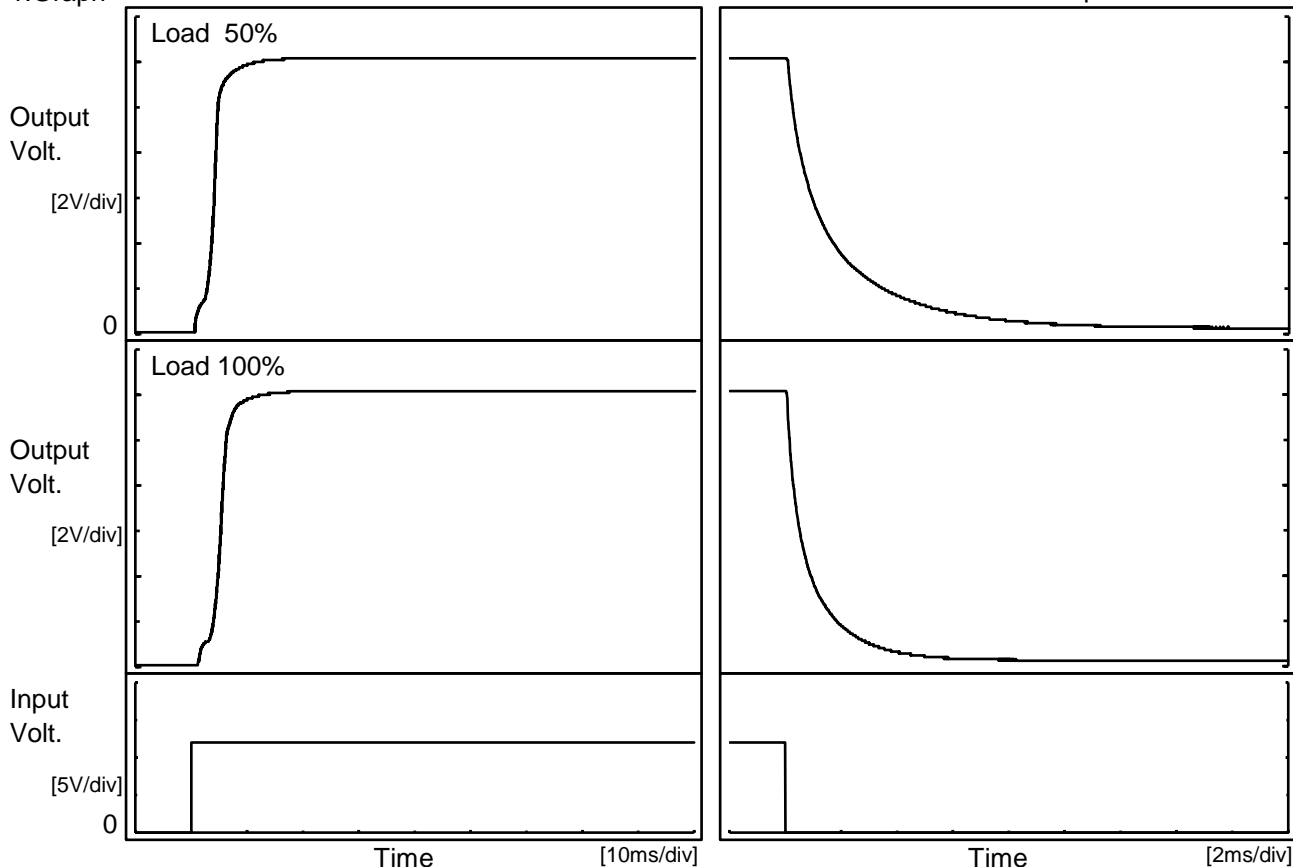
BC-12112

Model	MUS61212	Temperature 25°C Testing Circuitry Figure A
Item	Dynamic Load Response	
Object	+12V0.5A	



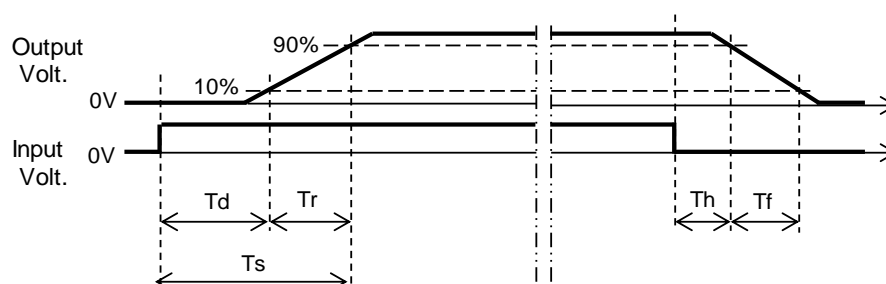
Model	MUS61212	Temperature	25°C
Item	Rise and Fall Time	Testing Circuitry	Figure A
Object	+12V0.5A		

### 1.Graph



### 2.Values

		[ms]				
Load	Time	Td	Tr	Ts	Th	Tf
50 %		1.8	3.6	5.4	0.2	4.6
100 %		3.5	3.5	7.0	0.1	2.4





<div>COSEL</div>																																																										
Model	MUS61212																																																									
Item	Overcurrent Protection	Temperature	25°C																																																							
Object	+12V0.5A	Testing Circuitry	Figure A																																																							
1.Graph <div><div><div></div><div>Input Volt.</div><div>9V</div></div><div><div></div><div>Input Volt.</div><div>12V</div></div><div><div></div><div>Input Volt.</div><div>18V</div></div></div> <p>Note: Slanted line shows the range of the rated load current.</p>		2.Values <table><tr><th rowspan="2">Output Voltage [V]</th><th colspan="3">Load Current [A]</th></tr><tr><th>Input Volt. 9[V]</th><th>Input Volt. 12[V]</th><th>Input Volt. 18[V]</th></tr><tr><td>11.4</td><td>0.67</td><td>0.72</td><td>0.74</td></tr><tr><td>10.8</td><td>0.70</td><td>0.74</td><td>0.77</td></tr><tr><td>9.6</td><td>0.76</td><td>0.80</td><td>0.84</td></tr><tr><td>8.4</td><td>0.82</td><td>0.87</td><td>0.90</td></tr><tr><td>7.2</td><td>0.89</td><td>0.95</td><td>0.99</td></tr><tr><td>6.0</td><td>0.96</td><td>1.00</td><td>1.01</td></tr><tr><td>4.8</td><td>0.98</td><td>1.01</td><td>1.01</td></tr><tr><td>3.6</td><td>1.02</td><td>1.03</td><td>1.01</td></tr><tr><td>2.4</td><td>1.08</td><td>1.08</td><td>1.04</td></tr><tr><td>1.2</td><td>1.17</td><td>1.16</td><td>1.10</td></tr><tr><td>0.0</td><td>1.37</td><td>1.30</td><td>1.26</td></tr><tr><td>--</td><td>-</td><td>-</td><td>-</td></tr></table>		Output Voltage [V]	Load Current [A]			Input Volt. 9[V]	Input Volt. 12[V]	Input Volt. 18[V]	11.4	0.67	0.72	0.74	10.8	0.70	0.74	0.77	9.6	0.76	0.80	0.84	8.4	0.82	0.87	0.90	7.2	0.89	0.95	0.99	6.0	0.96	1.00	1.01	4.8	0.98	1.01	1.01	3.6	1.02	1.03	1.01	2.4	1.08	1.08	1.04	1.2	1.17	1.16	1.10	0.0	1.37	1.30	1.26	--	-	-	-
Output Voltage [V]	Load Current [A]																																																									
	Input Volt. 9[V]	Input Volt. 12[V]	Input Volt. 18[V]																																																							
11.4	0.67	0.72	0.74																																																							
10.8	0.70	0.74	0.77																																																							
9.6	0.76	0.80	0.84																																																							
8.4	0.82	0.87	0.90																																																							
7.2	0.89	0.95	0.99																																																							
6.0	0.96	1.00	1.01																																																							
4.8	0.98	1.01	1.01																																																							
3.6	1.02	1.03	1.01																																																							
2.4	1.08	1.08	1.04																																																							
1.2	1.17	1.16	1.10																																																							
0.0	1.37	1.30	1.26																																																							
--	-	-	-																																																							

		Testing Circuitry Figure A
Model	MUS61212	
Item	Ambient Temperature Drift	
Object	+12V0.5A	

### 1.Values

Load 100%

Ambient Temperature[°C]	Output Voltage [V]		
	Input Volt. 9V	Input Volt. 12V	Input Volt. 18V
-40	11.931	11.932	11.932
25	12.018	12.019	12.019
85	12.050	12.051	12.051

Item	Minimum Input Voltage for Regulated Output Voltage	Testing Circuitry Figure A
Object	+12V0.5A	

### 1.Values

Ambient Temperature[°C]	Input Voltage [V]	
	Load 50%	Load 100%
-40	7.0	7.0
25	7.1	7.0
85	7.1	7.0

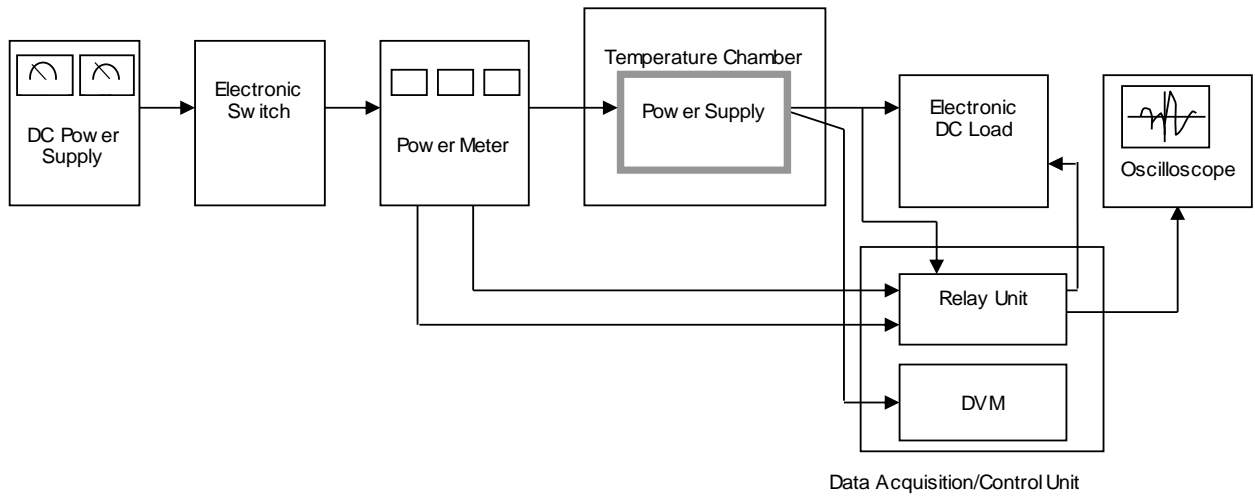


Figure A

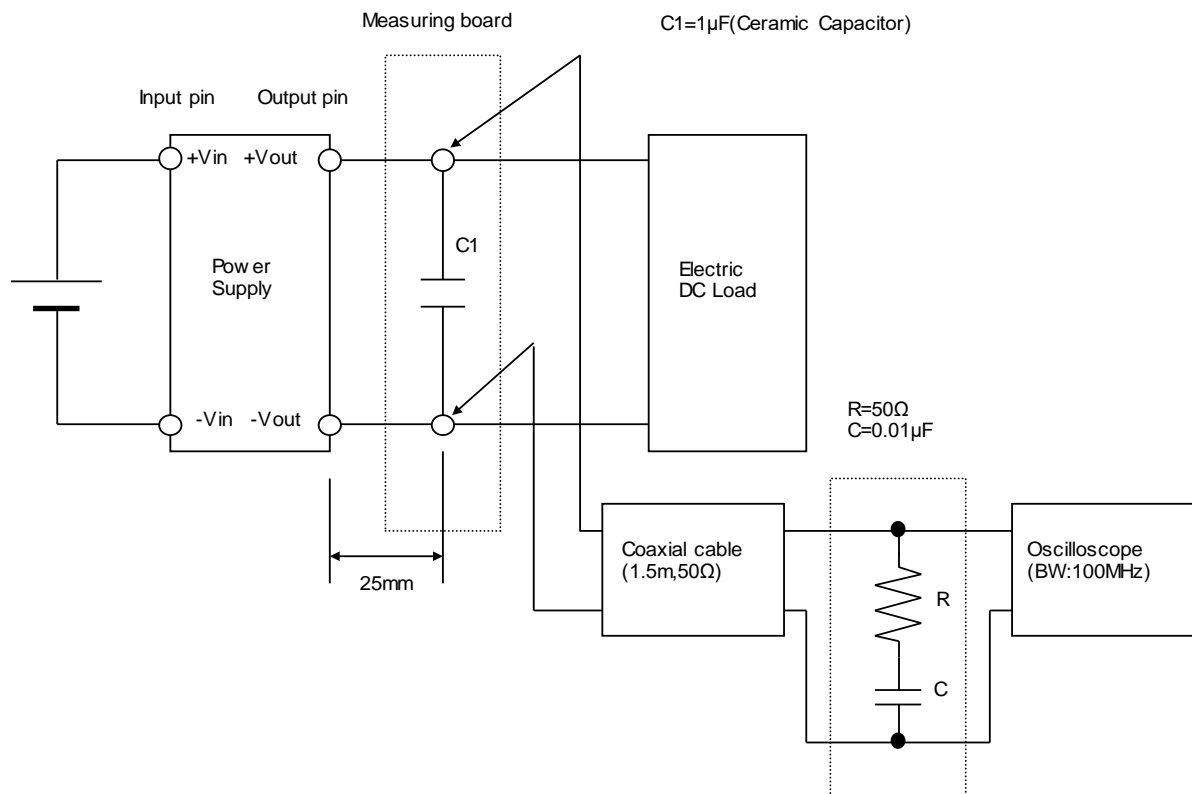


Figure B