

# TEST DATA OF MUS64812

Regulated DC Power Supply  
May.8. 2025

Approved by : Kenichi Tsukada  
Design Manager

Prepared by : Yoshihiko Saeki  
Design Engineer

**COSEL CO.,LTD.**

## CONTENTS

1.Input Current (by Load Current) . . . . .	1
2.Efficiency (by Load Current) . . . . .	2
3.Line Regulation . . . . .	3
4.Load Regulation . . . . .	4
5.Ripple-Noise . . . . .	4
6.Dynamic Load Response . . . . .	5
7.Rise and Fall Time . . . . .	6
8.Overcurrent Protection . . . . .	7
9.Ambient Temperature Drift . . . . .	8
10.Minimum Input Voltage for Regulated Output Voltage . . . . .	8
11.Figure of Testing Circuitry . . . . .	9

(Final Page 9)

Model		MUS64812	Temperature 25°C																																																				
Item		Input Current (by Load Current)	Testing Circuitry Figure A																																																				
Object		_____																																																					
1.Graph		<div><div>—△—</div><div>---□---</div><div>---○---</div></div> <div><div>Input Volt. 36V</div><div>Input Volt. 48V</div><div>Input Volt. 76V</div></div> <p>Input Current [A]</p> <p>Load Current [A]</p> <p>Note: Slanted line shows the range of the rated load current.</p>	2.Values																																																				
		<table><tr><th rowspan="2">Load Current [A]</th><th colspan="3">Input Current [A]</th></tr><tr><th>Input Volt. 36[V]</th><th>Input Volt. 48[V]</th><th>Input Volt. 76[V]</th></tr><tr><td>0.00</td><td>0.008</td><td>0.007</td><td>0.004</td></tr><tr><td>0.10</td><td>0.042</td><td>0.033</td><td>0.022</td></tr><tr><td>0.20</td><td>0.077</td><td>0.059</td><td>0.039</td></tr><tr><td>0.30</td><td>0.114</td><td>0.086</td><td>0.056</td></tr><tr><td>0.40</td><td>0.151</td><td>0.113</td><td>0.073</td></tr><tr><td>0.50</td><td>0.188</td><td>0.141</td><td>0.090</td></tr><tr><td>0.55</td><td>0.206</td><td>0.155</td><td>0.099</td></tr><tr><td>--</td><td>-</td><td>-</td><td>-</td></tr><tr><td>--</td><td>-</td><td>-</td><td>-</td></tr><tr><td>--</td><td>-</td><td>-</td><td>-</td></tr><tr><td>--</td><td>-</td><td>-</td><td>-</td></tr></table>			Load Current [A]	Input Current [A]			Input Volt. 36[V]	Input Volt. 48[V]	Input Volt. 76[V]	0.00	0.008	0.007	0.004	0.10	0.042	0.033	0.022	0.20	0.077	0.059	0.039	0.30	0.114	0.086	0.056	0.40	0.151	0.113	0.073	0.50	0.188	0.141	0.090	0.55	0.206	0.155	0.099	--	-	-	-	--	-	-	-	--	-	-	-	--	-	-	-
Load Current [A]	Input Current [A]																																																						
	Input Volt. 36[V]	Input Volt. 48[V]	Input Volt. 76[V]																																																				
0.00	0.008	0.007	0.004																																																				
0.10	0.042	0.033	0.022																																																				
0.20	0.077	0.059	0.039																																																				
0.30	0.114	0.086	0.056																																																				
0.40	0.151	0.113	0.073																																																				
0.50	0.188	0.141	0.090																																																				
0.55	0.206	0.155	0.099																																																				
--	-	-	-																																																				
--	-	-	-																																																				
--	-	-	-																																																				
--	-	-	-																																																				

**COSEL**

<div>LOREL</div>																																																						
Model	MUS64812																																																					
Item	Efficiency (by Load Current)	Temperature	25°C																																																			
Object		Testing Circuitry	Figure A																																																			
1.Graph		2.Values																																																				
<div><div><div>—△—</div><div>Input Volt.</div><div>36V</div></div><div><div>---□---</div><div>Input Volt.</div><div>48V</div></div><div><div>---○---</div><div>Input Volt.</div><div>76V</div></div></div> <div><p>Efficiency [%]</p><p>Load Current [A]</p><p>Note: Slanted line shows the range of the rated load current.</p></div>		<table><tr><th rowspan="2">Load Current [A]</th><th colspan="3">Efficiency [%]</th></tr><tr><th>Input Volt. 36[V]</th><th>Input Volt. 48[V]</th><th>Input Volt. 76[V]</th></tr><tr><td>0.00</td><td>-</td><td>-</td><td>-</td></tr><tr><td>0.10</td><td>78.5</td><td>75.4</td><td>70.8</td></tr><tr><td>0.20</td><td>85.3</td><td>83.9</td><td>81.3</td></tr><tr><td>0.30</td><td>87.4</td><td>86.7</td><td>83.5</td></tr><tr><td>0.40</td><td>88.1</td><td>88.0</td><td>85.8</td></tr><tr><td>0.50</td><td>88.5</td><td>88.5</td><td>87.1</td></tr><tr><td>0.55</td><td>88.5</td><td>88.6</td><td>87.4</td></tr><tr><td>--</td><td>-</td><td>-</td><td>-</td></tr><tr><td>--</td><td>-</td><td>-</td><td>-</td></tr><tr><td>--</td><td>-</td><td>-</td><td>-</td></tr><tr><td>--</td><td>-</td><td>-</td><td>-</td></tr></table>		Load Current [A]	Efficiency [%]			Input Volt. 36[V]	Input Volt. 48[V]	Input Volt. 76[V]	0.00	-	-	-	0.10	78.5	75.4	70.8	0.20	85.3	83.9	81.3	0.30	87.4	86.7	83.5	0.40	88.1	88.0	85.8	0.50	88.5	88.5	87.1	0.55	88.5	88.6	87.4	--	-	-	-	--	-	-	-	--	-	-	-	--	-	-	-
Load Current [A]	Efficiency [%]																																																					
	Input Volt. 36[V]	Input Volt. 48[V]	Input Volt. 76[V]																																																			
0.00	-	-	-																																																			
0.10	78.5	75.4	70.8																																																			
0.20	85.3	83.9	81.3																																																			
0.30	87.4	86.7	83.5																																																			
0.40	88.1	88.0	85.8																																																			
0.50	88.5	88.5	87.1																																																			
0.55	88.5	88.6	87.4																																																			
--	-	-	-																																																			
--	-	-	-																																																			
--	-	-	-																																																			
--	-	-	-																																																			

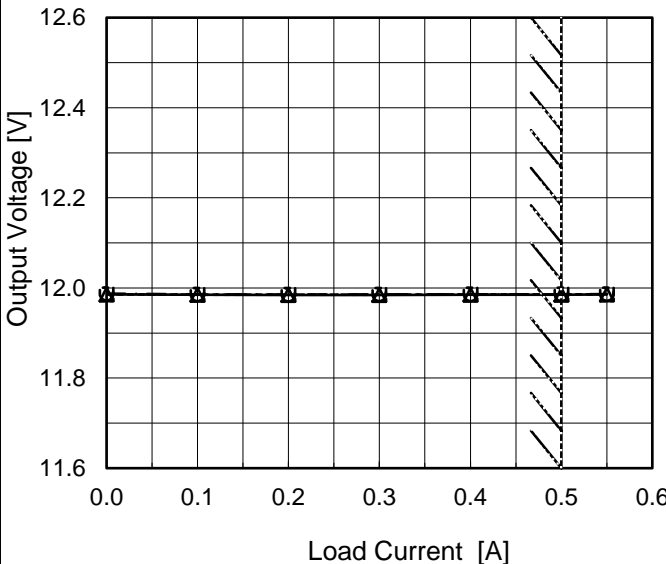
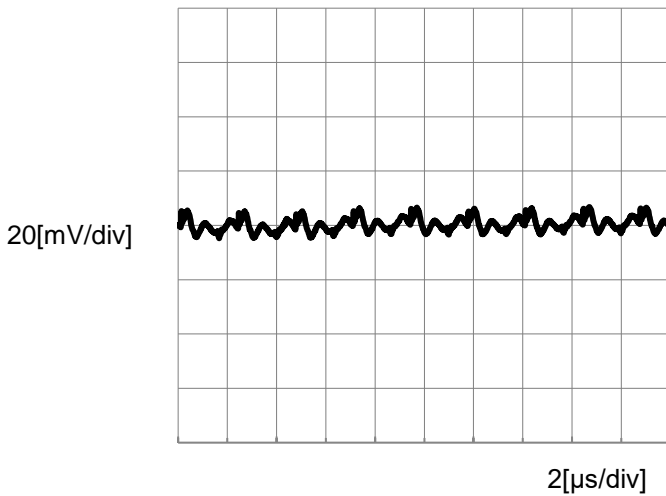
- 2 -

BC-12120

**COSEL**

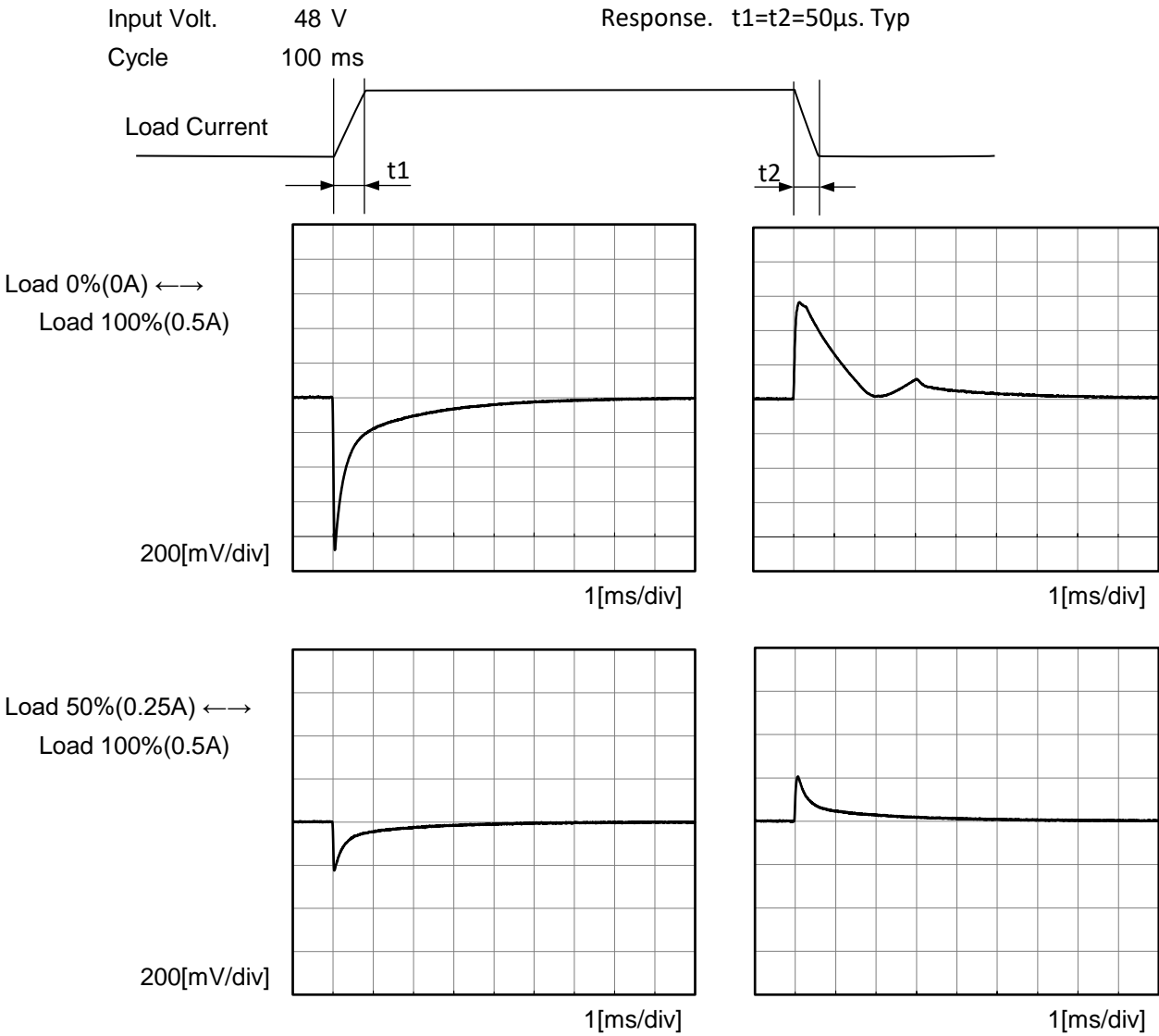
Model		MUS64812	Temperature 25°C Testing Circuitry Figure A																																	
Item		Line Regulation																																		
Object		+12V0.5A																																		
1.Graph			2.Values																																	
<div><div><div><div><div></div><div></div></div><div><div></div><div></div></div></div><div><div></div><div></div></div><div><div></div><div></div></div></div><div>Load 50%</div><div>Load 100%</div></div> <table><thead><tr><th rowspan="2">Input Voltage [V]</th><th colspan="2">Output Voltage [V]</th></tr><tr><th>Load 50%</th><th>Load 100%</th></tr></thead><tbody><tr><td>30</td><td>11.983</td><td>11.984</td></tr><tr><td>36</td><td>11.984</td><td>11.985</td></tr><tr><td>40</td><td>11.985</td><td>11.986</td></tr><tr><td>48</td><td>11.985</td><td>11.986</td></tr><tr><td>54</td><td>11.985</td><td>11.986</td></tr><tr><td>60</td><td>11.985</td><td>11.986</td></tr><tr><td>70</td><td>11.985</td><td>11.986</td></tr><tr><td>76</td><td>11.985</td><td>11.986</td></tr><tr><td>80</td><td>11.985</td><td>11.986</td></tr></tbody></table> <p>Note: Slanted line shows the range of the rated input voltage.</p>			Input Voltage [V]	Output Voltage [V]		Load 50%	Load 100%	30	11.983	11.984	36	11.984	11.985	40	11.985	11.986	48	11.985	11.986	54	11.985	11.986	60	11.985	11.986	70	11.985	11.986	76	11.985	11.986	80	11.985	11.986		
Input Voltage [V]	Output Voltage [V]																																			
	Load 50%	Load 100%																																		
30	11.983	11.984																																		
36	11.984	11.985																																		
40	11.985	11.986																																		
48	11.985	11.986																																		
54	11.985	11.986																																		
60	11.985	11.986																																		
70	11.985	11.986																																		
76	11.985	11.986																																		
80	11.985	11.986																																		

**COSEL**

Model	MUS64812																																																					
Item	Load Regulation	Temperature	25°C																																																			
Object	+12V0.5A	Testing Circuitry	Figure A																																																			
1.Graph		2.Values																																																				
<div><div><div>—△—</div><div>Input Volt.</div><div>36V</div></div><div><div>---□---</div><div>Input Volt.</div><div>48V</div></div><div><div>-·-○-·-</div><div>Input Volt.</div><div>76V</div></div></div>  <p>Note: Slanted line shows the range of the rated load current.</p>		<table><tr><th rowspan="2">Load Current [A]</th><th colspan="3">Output Voltage [V]</th></tr><tr><th>Input Volt. 36[V]</th><th>Input Volt. 48[V]</th><th>Input Volt. 76[V]</th></tr><tr><td>0.00</td><td>11.986</td><td>11.986</td><td>11.987</td></tr><tr><td>0.10</td><td>11.985</td><td>11.985</td><td>11.985</td></tr><tr><td>0.20</td><td>11.984</td><td>11.985</td><td>11.985</td></tr><tr><td>0.30</td><td>11.984</td><td>11.985</td><td>11.985</td></tr><tr><td>0.40</td><td>11.985</td><td>11.986</td><td>11.986</td></tr><tr><td>0.50</td><td>11.985</td><td>11.986</td><td>11.986</td></tr><tr><td>0.55</td><td>11.986</td><td>11.986</td><td>11.986</td></tr><tr><td>--</td><td>--</td><td>--</td><td>--</td></tr><tr><td>--</td><td>--</td><td>--</td><td>--</td></tr><tr><td>--</td><td>--</td><td>--</td><td>--</td></tr><tr><td>--</td><td>--</td><td>--</td><td>--</td></tr></table>		Load Current [A]	Output Voltage [V]			Input Volt. 36[V]	Input Volt. 48[V]	Input Volt. 76[V]	0.00	11.986	11.986	11.987	0.10	11.985	11.985	11.985	0.20	11.984	11.985	11.985	0.30	11.984	11.985	11.985	0.40	11.985	11.986	11.986	0.50	11.985	11.986	11.986	0.55	11.986	11.986	11.986	--	--	--	--	--	--	--	--	--	--	--	--	--	--	--	--
Load Current [A]	Output Voltage [V]																																																					
	Input Volt. 36[V]	Input Volt. 48[V]	Input Volt. 76[V]																																																			
0.00	11.986	11.986	11.987																																																			
0.10	11.985	11.985	11.985																																																			
0.20	11.984	11.985	11.985																																																			
0.30	11.984	11.985	11.985																																																			
0.40	11.985	11.986	11.986																																																			
0.50	11.985	11.986	11.986																																																			
0.55	11.986	11.986	11.986																																																			
--	--	--	--																																																			
--	--	--	--																																																			
--	--	--	--																																																			
--	--	--	--																																																			
Item	Ripple-Noise	Temperature	25°C																																																			
Object	+12V0.5A	Testing Circuitry	Figure B																																																			
1.Graph																																																						
<div><div><div>Input Voltage</div><div>48V</div></div><div><div>Load</div><div>100%</div></div></div> 																																																						



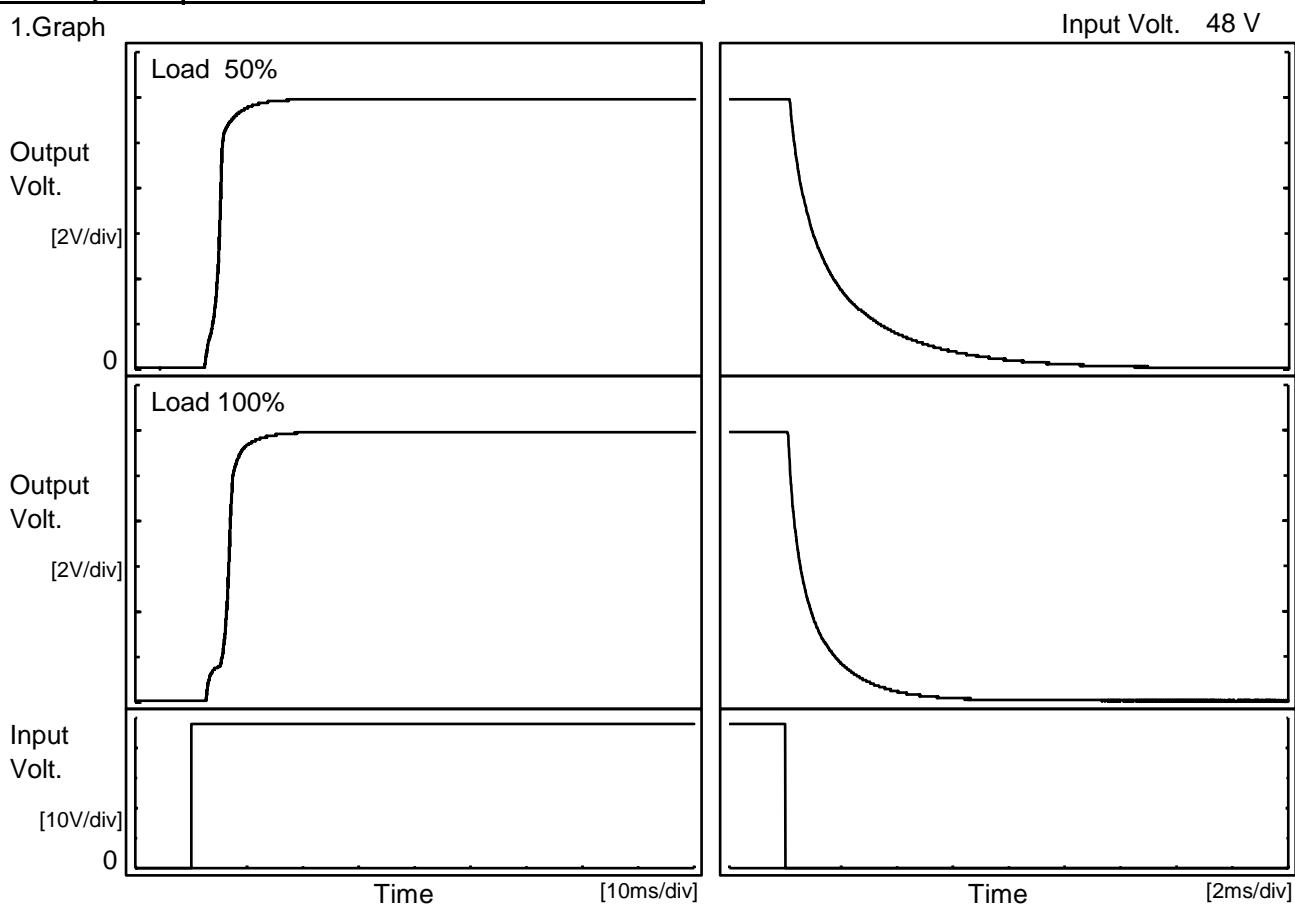
Model	MUS64812		
Item	Dynamic Load Response	Temperature	25°C
		Testing Circuitry	Figure A
Object	+12V0.5A		



**COSEL**

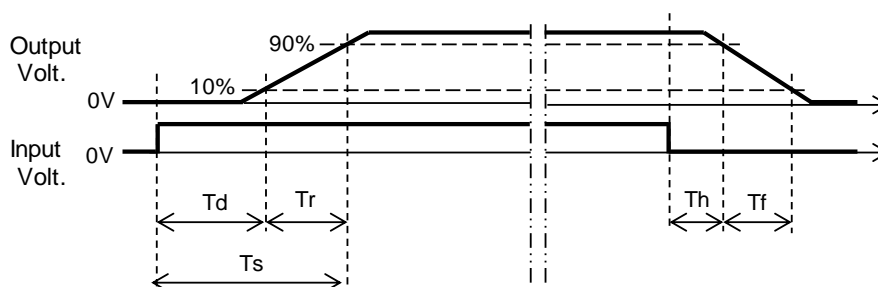
Model	MUS64812	Temperature 25°C Testing Circuitry Figure A
Item	Rise and Fall Time	
Object	+12V0.5A	

## 1.Graph



## 2.Values

		[ms]				
Load	Time	Td	Tr	Ts	Th	Tf
50 %		3.0	3.2	6.2	0.3	4.8
100 %		3.3	4.8	8.1	0.2	2.5





**COSEL**

COSEL																																																										
Model	MUS64812																																																									
Item	Overcurrent Protection	Temperature	25°C																																																							
Object	+12V0.5A	Testing Circuitry	Figure A																																																							
1.Graph		2.Values																																																								
<div><div><div></div><div>Input Volt.</div><div>36V</div></div><div><div></div><div>Input Volt.</div><div>48V</div></div><div><div></div><div>Input Volt.</div><div>76V</div></div></div> <p>Note: Slanted line shows the range of the rated load current.</p>		<table><tr><th rowspan="2">Output Voltage [V]</th><th colspan="3">Load Current [A]</th></tr><tr><th>Input Volt. 36[V]</th><th>Input Volt. 48[V]</th><th>Input Volt. 76[V]</th></tr><tr><td>11.4</td><td>0.73</td><td>0.77</td><td>0.76</td></tr><tr><td>10.8</td><td>0.76</td><td>0.79</td><td>0.79</td></tr><tr><td>9.6</td><td>0.82</td><td>0.86</td><td>0.86</td></tr><tr><td>8.4</td><td>0.89</td><td>0.93</td><td>0.93</td></tr><tr><td>7.2</td><td>0.97</td><td>1.02</td><td>1.02</td></tr><tr><td>6.0</td><td>1.01</td><td>1.03</td><td>1.00</td></tr><tr><td>4.8</td><td>1.00</td><td>1.01</td><td>0.94</td></tr><tr><td>3.6</td><td>0.99</td><td>0.98</td><td>0.91</td></tr><tr><td>2.4</td><td>1.00</td><td>0.98</td><td>0.89</td></tr><tr><td>1.2</td><td>1.05</td><td>1.01</td><td>0.91</td></tr><tr><td>0.0</td><td>1.20</td><td>1.18</td><td>1.11</td></tr><tr><td>--</td><td>-</td><td>-</td><td>-</td></tr></table>		Output Voltage [V]	Load Current [A]			Input Volt. 36[V]	Input Volt. 48[V]	Input Volt. 76[V]	11.4	0.73	0.77	0.76	10.8	0.76	0.79	0.79	9.6	0.82	0.86	0.86	8.4	0.89	0.93	0.93	7.2	0.97	1.02	1.02	6.0	1.01	1.03	1.00	4.8	1.00	1.01	0.94	3.6	0.99	0.98	0.91	2.4	1.00	0.98	0.89	1.2	1.05	1.01	0.91	0.0	1.20	1.18	1.11	--	-	-	-
Output Voltage [V]	Load Current [A]																																																									
	Input Volt. 36[V]	Input Volt. 48[V]	Input Volt. 76[V]																																																							
11.4	0.73	0.77	0.76																																																							
10.8	0.76	0.79	0.79																																																							
9.6	0.82	0.86	0.86																																																							
8.4	0.89	0.93	0.93																																																							
7.2	0.97	1.02	1.02																																																							
6.0	1.01	1.03	1.00																																																							
4.8	1.00	1.01	0.94																																																							
3.6	0.99	0.98	0.91																																																							
2.4	1.00	0.98	0.89																																																							
1.2	1.05	1.01	0.91																																																							
0.0	1.20	1.18	1.11																																																							
--	-	-	-																																																							



		Testing Circuitry Figure A
Model	MUS64812	
Item	Ambient Temperature Drift	
Object	+12V0.5A	

## 1.Values

Load 100%

Ambient Temperature[°C]	Output Voltage [V]		
	Input Volt. 36V	Input Volt. 48V	Input Volt. 76V
-40	11.907	11.908	11.908
25	11.985	11.986	11.986
85	12.011	12.011	12.010

Item	Minimum Input Voltage for Regulated Output Voltage	Testing Circuitry Figure A
Object	+12V0.5A	

## 1.Values

Ambient Temperature[°C]	Input Voltage [V]	
	Load 50%	Load 100%
-40	28.1	28.3
25	28.3	28.2
85	28.4	28.3

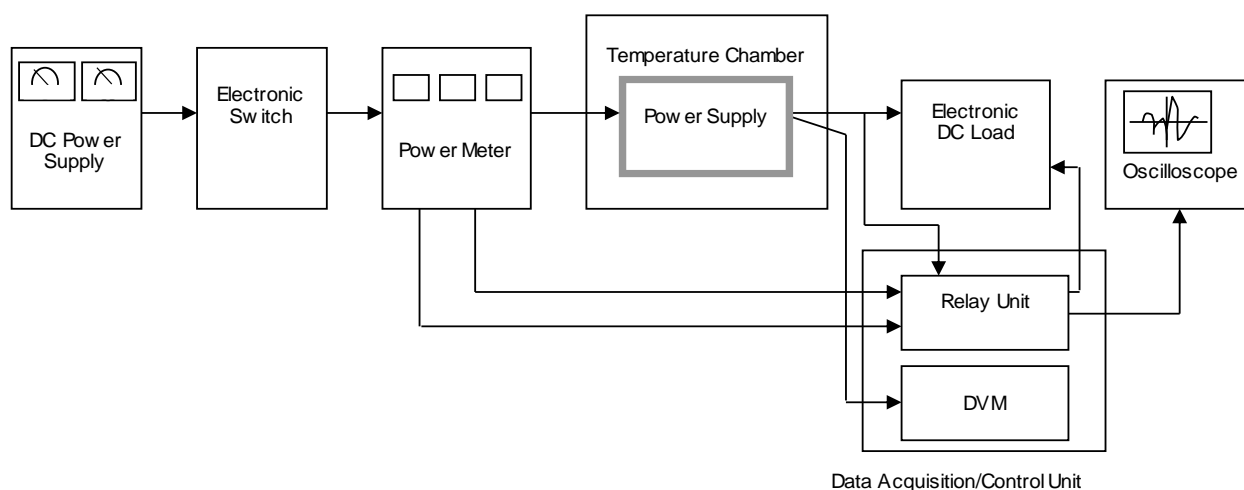


Figure A

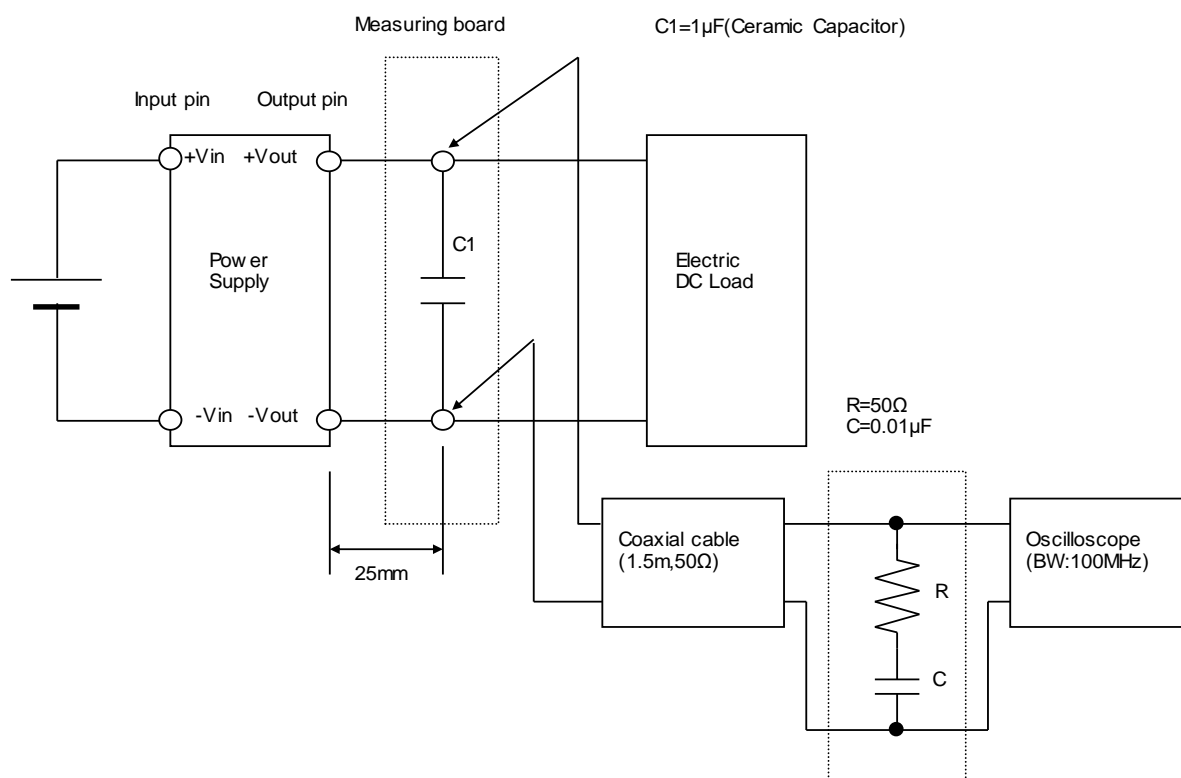


Figure B