

TEST DATA OF MUW104815

Regulated DC Power Supply
May.7. 2025

Approved by : Kenichi Tsukada
Design Manager

Prepared by : Yoshihiko Saeki
Design Engineer

COSEL CO.,LTD.

CONTENTS

1.Input Current (by Load Current)	1
2.Efficiency (by Load Current)	2
3.Line Regulation	3
4.Load Regulation	4, 5
5.Ripple-Noise	4, 5
6.Dynamic Load Response	6, 7
7.Rise and Fall Time	8, 9
8.Overcurrent Protection	10
9.Ambient Temperature Drift	11, 12
10.Minimum Input Voltage for Regulated Output Voltage	11, 12
11.Figure of Testing Circuitry	13

(Final Page 13)

COSEL

COSEL																																																						
Model	MUW104815																																																					
Item	Input Current (by Load Current)	Temperature	25°C																																																			
		Testing Circuitry	Figure A																																																			
Object																																																						
1.Graph		2.Values																																																				
<div><div><div>—△—</div><div>Input Volt.</div><div>36V</div></div><div><div>---□---</div><div>Input Volt.</div><div>48V</div></div><div><div>---○---</div><div>Input Volt.</div><div>76V</div></div></div> <p>Input Current [A]</p> <p>Load Ratio [%]</p>		<table><tr><th rowspan="2">Load Ratio [%]</th><th colspan="3">Input Current [A]</th></tr><tr><th>Input Volt. 36[V]</th><th>Input Volt. 48[V]</th><th>Input Volt. 76[V]</th></tr><tr><td>0</td><td>0.008</td><td>0.006</td><td>0.003</td></tr><tr><td>20</td><td>0.070</td><td>0.055</td><td>0.037</td></tr><tr><td>40</td><td>0.132</td><td>0.101</td><td>0.066</td></tr><tr><td>60</td><td>0.197</td><td>0.148</td><td>0.097</td></tr><tr><td>80</td><td>0.260</td><td>0.196</td><td>0.126</td></tr><tr><td>100</td><td>0.325</td><td>0.244</td><td>0.156</td></tr><tr><td>110</td><td>0.359</td><td>0.269</td><td>0.171</td></tr><tr><td>--</td><td>-</td><td>-</td><td>-</td></tr><tr><td>--</td><td>-</td><td>-</td><td>-</td></tr><tr><td>--</td><td>-</td><td>-</td><td>-</td></tr><tr><td>--</td><td>-</td><td>-</td><td>-</td></tr></table>		Load Ratio [%]	Input Current [A]			Input Volt. 36[V]	Input Volt. 48[V]	Input Volt. 76[V]	0	0.008	0.006	0.003	20	0.070	0.055	0.037	40	0.132	0.101	0.066	60	0.197	0.148	0.097	80	0.260	0.196	0.126	100	0.325	0.244	0.156	110	0.359	0.269	0.171	--	-	-	-	--	-	-	-	--	-	-	-	--	-	-	-
Load Ratio [%]	Input Current [A]																																																					
	Input Volt. 36[V]	Input Volt. 48[V]	Input Volt. 76[V]																																																			
0	0.008	0.006	0.003																																																			
20	0.070	0.055	0.037																																																			
40	0.132	0.101	0.066																																																			
60	0.197	0.148	0.097																																																			
80	0.260	0.196	0.126																																																			
100	0.325	0.244	0.156																																																			
110	0.359	0.269	0.171																																																			
--	-	-	-																																																			
--	-	-	-																																																			
--	-	-	-																																																			
--	-	-	-																																																			

COSEL

<div>COSEL</div>																																																						
Model	MUW104815																																																					
Item	Efficiency (by Load Current)	Temperature	25°C																																																			
		Testing Circuitry	Figure A																																																			
Object																																																						
1.Graph		2.Values																																																				
<div><div><div><div>—△—</div><div>Input Volt.</div><div>36V</div></div><div><div>- - □ - -</div><div>Input Volt.</div><div>48V</div></div><div><div>- · ○ - ·</div><div>Input Volt.</div><div>76V</div></div></div><div><p>Efficiency [%]</p><p>Load Ratio [%]</p></div></div>		<table><tr><th rowspan="2">Load Ratio [%]</th><th colspan="3">Efficiency [%]</th></tr><tr><th>Input Volt. 36[V]</th><th>Input Volt. 48[V]</th><th>Input Volt. 76[V]</th></tr><tr><td>0</td><td>-</td><td>-</td><td>-</td></tr><tr><td>20</td><td>83.3</td><td>79.5</td><td>75.2</td></tr><tr><td>40</td><td>87.9</td><td>86.2</td><td>82.8</td></tr><tr><td>60</td><td>88.8</td><td>88.2</td><td>84.7</td></tr><tr><td>80</td><td>89.3</td><td>89.0</td><td>87.4</td></tr><tr><td>100</td><td>89.2</td><td>89.3</td><td>88.2</td></tr><tr><td>110</td><td>89.0</td><td>89.3</td><td>88.3</td></tr><tr><td>--</td><td>-</td><td>-</td><td>-</td></tr><tr><td>--</td><td>-</td><td>-</td><td>-</td></tr><tr><td>--</td><td>-</td><td>-</td><td>-</td></tr><tr><td>--</td><td>-</td><td>-</td><td>-</td></tr></table>		Load Ratio [%]	Efficiency [%]			Input Volt. 36[V]	Input Volt. 48[V]	Input Volt. 76[V]	0	-	-	-	20	83.3	79.5	75.2	40	87.9	86.2	82.8	60	88.8	88.2	84.7	80	89.3	89.0	87.4	100	89.2	89.3	88.2	110	89.0	89.3	88.3	--	-	-	-	--	-	-	-	--	-	-	-	--	-	-	-
Load Ratio [%]	Efficiency [%]																																																					
	Input Volt. 36[V]	Input Volt. 48[V]	Input Volt. 76[V]																																																			
0	-	-	-																																																			
20	83.3	79.5	75.2																																																			
40	87.9	86.2	82.8																																																			
60	88.8	88.2	84.7																																																			
80	89.3	89.0	87.4																																																			
100	89.2	89.3	88.2																																																			
110	89.0	89.3	88.3																																																			
--	-	-	-																																																			
--	-	-	-																																																			
--	-	-	-																																																			
--	-	-	-																																																			

- 2 -

BC-12153

COSEL

COSEL			
Model	MUW104815	Temperature 25°C Testing Circuitry Figure A	
Item	Line Regulation		
Object	+15V0.35A		
1.Graph		2.Values	
<div><div><div></div><div></div></div><div><div></div><div></div></div><div><div></div><div></div></div><div><div></div><div></div></div><div><div></div><div></div></div><div><div></div><div></div></div><div><div></div><div></div></div><div><div></div><div></div></div><div><div></div><div></div></div><div><div></div><div></div></div><div><div></div><div></div></div><div><div></div><div></div></div><div><div></div><div></div></div><div><div></div><div></div></div><div><div></div><div></div></div><div><div></div><div></div></div><div><div></div><div></div></div><div><div></div><div></div></div><div><div></div><div></div></div><div><div></div><div></div></div><div><div></div><div></div></div><div><div></div><div></div></div><div><div></div><div></div></div><div><div></div><div></div></div><div><div></div><div></div></div><div><div></div><div></div></div><div><div></div><div></div></div><div><div></div><div></div></div><div><div></div><div></div></div><div><div></div><div></div></div><div><div></div><div></div></div><div><div></div><div></div></div><div><div></div><div></div></div><div><div></div><div></div></div><div><div></div><div></div></div><div><div></div><div></div></div><div><div></div><div></div></div><div><div></div><div></div></div><div><div></div><div></div></div><div><div></div><div></div></div><div><div></div><div></div></div><div><div></div><div></div></div><div><div></div><div></div></div><div><div></div><div></div></div><div><div></div><div></div></div><div><div></div><div></div></div><div><div></div><div></div></div><div><div></div><div></div></div><div><div></div><div></div></div><div><div></div><div></div></div><div><div></div><div></div></div><div><div></div><div></div></div><div><div></div><div></div></div><div><div></div><div></div></div><div><div></div><div></div></div><div><div></div><div></div></div><div><div></div><div></div></div><div><div></div><div></div></div><div><div></div><div></div></div><div><div></div><div></div></div><div><div></div><div></div></div><div><div></div><div></div></div><div><div></div><div></div></div><div><div></div><div></div></div><div><div></div><div></div></div><div><div></div><div></div></div><div><div></div><div></div></div><div><div></div><div></div></div><div><div></div><div></div></div><div><div></div><div></div></div><div><div></div><div></div></div><div><div></div><div></div></div><div><div></div><div></div></div><div><div></div><div></div></div><div><div></div><div></div></div><div><div></div><div></div></div><div><div></div><div></div></div><div><div></div><div></div></div><div><div></div><div></div></div><div><div></div><div></div></div><div><div></div><div></div></div><div><div></div><div></div></div><div><div></div><div></div></div><div><div></div><div></div></div><div><div></div><div></div></div><div><div></div><div></div></div><div><div></div><div></div></div><div><div></div><div></div></div><div><div></div><div></div></div><div><div></div><div></div></div><div><div></div><div></div></div><div><div></div><div></div></div><div><div></div><div></div></div><div><div></div><div></div></div><div><div></div><div></div></div><div><div></div><div></div></div><div><div></div><div></div></div><div><div></div><div></div></div><div><div></div><div></div></div><div><div></div><div></div></div><div><div></div><div></div></div><div><div></div><div></div></div><div><div></div><div></div></div><div><div></div><div></div></div><div><div></div><div></div></div><div><div></div><div></div></div><div><div></div><div></div></div><div><div></div><div></div></div><div><div></div><div></div></div><div><div></div><div></div></div><div><div></div><div></div></div><div><div></div><div></div></div><div><div></div><div></div></div><div><div></div><div></div></div><div><div></div><div></div></div><div><div></div><div></div></div><div><div></div><div></div></div><div><div></div><div></div></div><div><div></div><div></div></div><div><div></div><div></div></div><div><div></div><div></div></div><div><div></div><div></div></div><div><div></div><div></div></div><div><div></div><div></div></div><div><div></div><div></div></div><div><div></div><div></div></div><div><div></div><div></div></div><div><div></div><div></div></div><div><div></div><div></div></div><div><div></div><div></div></div><div><div></div><div></div></div><div><div></div><div></div></div><div><div></div><div></div></div><div><div></div><div></div></div><div><div></div><div></div></div><div><div></div><div></div></div><div><div></div><div></div></div><div><div></div><div></div></div><div><div></div><div></div></div><div><div></div><div></div></div><div><div></div><div></div></div><div><div></div><div></div></div><div><div></div><div></div></div><div><div></div><div></div></div><div><div></div><div></div></div><div><div></div><div></div></div><div><div></div><div></div></div><div><div></div><div></div></div><div><div></div><div></div></div><div><div></div><div></div></div><div><div></div><div></div></div><div><div></div><div></div></div><div><div></div><div></div></div><div><div></div><div></div></div><div><div></div><div></div></div><div><div></div><div></div></div><div><div></div><div></div></div><div><div></div><div></div></div><div><div></div><div></div></div><div><div></div><div></div></div><div><div></div><div></div></div><div><div></div><div></div></div><div><div></div><div></div></div><div><div></div><div></div></div><div><div></div><div></div></div><div><div></div><div></div></div><div><div></div><div></div></div><div><div></div><div></div></div><div><div></div><div></div></div><div><div></div><div></div></div><div><div></div><div></div></div><div><div></div><div></div></div><div><div></div><div></div></div><div><div></div><div></div></div><div><div></div><div></div></div><div><div></div><div></div></div><div><div></div><div></div></div><div><div></div><div></div></div><div><div></div><div></div></div><div><div></div><div></div></div><div><div></div><div></div></div><div><div></div><div></div></div><div><div></div><div></div></div><div><div></div><div></div></div><div><div></div><div></div></div><div><div></div><div></div></div><div><div></div><div></div></div><div><div></div><div></div></div><div><div></div><div></div></div><div><div></div><div></div></div><div><div></div><div></div></div><div><div></div><div></div></div><div><div></div><div></div></div><div><div></div><div></div></div><div><div></div><div></div></div><div><div></div><div></div></div><div><div></div><div></div></div><div><div></div><div></div></div><div><div></div><div></div></div><div><div></div><div></div></div><div><div></div><div></div></div><div><div></div><div></div></div><div><div></div><div></div></div><div><div></div><div></div></div><div><div></div><div></div></div><div><div></div><div></div></div><div><div></div><div></div></div><div><div></div><div></div></div><div><div></div><div></div></div><div><div></div><div></div></div><div><div></div><div></div></div><div><div></div><div></div></div><div><div></div><div></div></div><div><div></div><div></div></div><div><div></div><div></div></div><div><div></div><div></div></div><div><div></div><div></div></div><div><div></div><div></div></div><div><div></div><div></div></div><div><div></div><div></div></div><div><div></div><div></div></div><div><div></div><div></div></div><div><div></div><div></div></div><div><div></div><div></div></div><div><div></div><div></div></div><div><div></div><div></div></div><div><div></div><div></div></div><div><div></div><div></div></div><div><div></div><div></div></div><div><div></div><div></div></div><div><div></div><div></div></div><div><div></div><div></div></div><div><div></div><div></div></div><div><div></div><div></div></div><div><div></div><div></div></div><div><div></div><div></div></div><div><div></div><div></div></div><div><div></div><div></div></div><div><div></div><div></div></div><div><div></div><div></div></div><div><div></div><div></div></div><div><div></div><div></div></div><div><div></div><div></div></div><div><div></div><div></div></div><div><div></div><div></div></div><div><div></div><div></div></div><div><div></div><div></div></div><div><div></div><div></div></div><div><div></div><div></div></div><div><div></div><div></div></div><div><div></div><div></div></div><div><div></div><div></div></div><div><div></div><div></div></div><div><div></div><div></div></div><div><div></div><div></div></div><div><div></div><div></div></div><div><div></div><div></div></div><div><div></div><div></div></div><div><div></div><div></div></div><div><div></div><div></div></div><div><div></div><div></div></div><div><div></div><div></div></div><div><div></div><div></div></div><div><div></div><div></div></div><div><div></div><div></div></div><div><div></div><div></div></div><div><div></div><div></div></div><div><div></div><div></div></div><div><div></div><div></div></div><div><div></div><div></div></div><div><div></div><div></div></div><div><div></div><div></div></div><div><div></div><div></div></div><div><div></div><div></div></div><div><div></div><div></div></div><div><div></div><div></div></div><div><div></div><div></div></div><div><div></div><div></div></div><div><div></div><div></div></div><div><div></div><div></div></div><div><div></div><div></div></div><div><div></div><div></div></div><div><div></div><div></div></div><div><div></div><div></div></div><div><div></div><div></div></div><div><div></div><div></div></div><div><div></div><div></div></div><div><div></div><div></div></div><div><div></div><div></div></div><div><div></div><div></div></div><div><div></div><div></div></div><div><div></div><div></div></div><div><div></div><div></div></div><div><div></div><div></div></div><div><div></div><div></div></div><div><div></div><div></div></div><div><div></div><div></div></div><div><div></div><div></div></div><div><div></div><div></div></div><div><div></div><div></div></div><div><div></div><div></div></div><div><div></div><div></div></div><div><div></div><div></div></div><div><div></div><div></div></div><div><div></div><div></div></div><div><div></div><div></div></div><div><div></div><div></div></div><div><div></div><div></div></div><div><div></div><div></div></div><div><div></div><div></div></div><div><div></div><div></div></div><div><div></div><div></div></div><div><div></div><div></div></div><div><div></div><div></div></div><div><div></div><div></div></div><div><div></div><div></div></div><div><div></div><div></div></div><div><div></div><div></div></div><div><div></div><div></div></div><div><div></div><div></div></div><div><div></div><div></div></div><div><div></div><div></div></div><div><div></div><div></div></div><div><div></div><div></div></div><div><div></div><div></div></div><div><div></div><div></div></div><div><div></div><div></div></div><div><div></div><div></div></div><div><div></div><div></div></div><div><div></div><div></div></div><div><div></div><div></div></div><div><div></div><div></div></div><div><div></div><div></div></div><div><div></div><div></div></div><div><div></div><div></div></div><div><div></div><div></div></div><div><div></div><div></div></div><div><div></div><div></div></div><div><div></div><div></div></div><div><div></div><div></div></div><div><div></div><div></div></div><div><div></div><div></div></div><div><div></div><div></div></div><div><div></div><div></div></div><div><div></div><div></div></div><div><div></div><div></div></div><div><div></div><div></div></div><div><div></div><div></div></div><div><div></div><div></div></div><div><div></div><div></div></div><div><div></div><div></div></div><div><div></div><div></div></div><div><div></div><div></div></div><div><div></div><div></div></div><div><div></div><div></div></div><div><div></div><div></div></div><div><div></div><div></div></div><div><div></div><div></div></div><div><div></div><div></div></div><div><div></div><div></div></div><div><div></div><div></div></div><div><div></div><div></div></div><div><</div></div>			

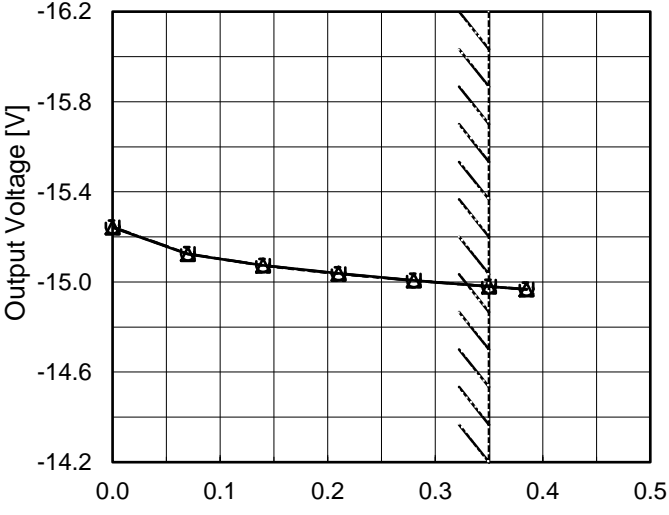
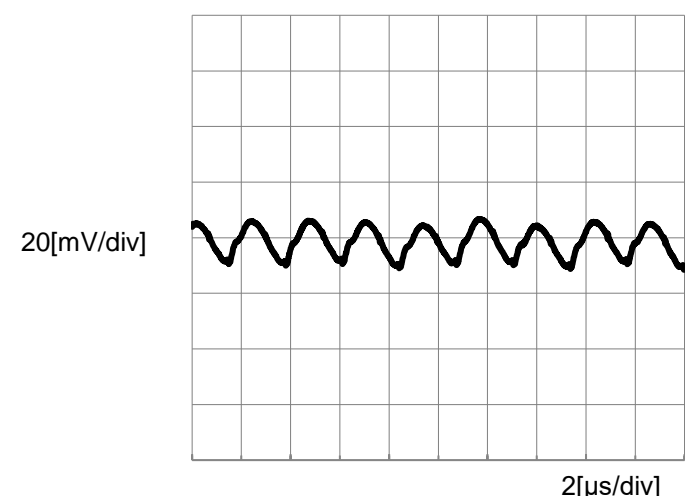
COSEL

COSEL																																																						
Model	MUW104815	Temperature	25°C																																																			
Item	Load Regulation	Testing Circuitry	Figure A																																																			
Object	+15V0.35A																																																					
1.Graph		2.Values																																																				
<div><div><div>—△—</div><div>Input Volt.</div><div>36V</div></div><div><div>---□---</div><div>Input Volt.</div><div>48V</div></div><div><div>---○---</div><div>Input Volt.</div><div>76V</div></div></div> <div><p>Output Voltage [V]</p><p>Load Current [A]</p><p>Note: Slanted line shows the range of the rated load current.</p></div>		<table><tr><th rowspan="2">Load Current [A]</th><th colspan="3">Output Voltage [V]</th></tr><tr><th>Input Volt. 36[V]</th><th>Input Volt. 48[V]</th><th>Input Volt. 76[V]</th></tr><tr><td>0.000</td><td>15.255</td><td>15.255</td><td>15.254</td></tr><tr><td>0.070</td><td>15.132</td><td>15.132</td><td>15.132</td></tr><tr><td>0.140</td><td>15.083</td><td>15.082</td><td>15.082</td></tr><tr><td>0.210</td><td>15.047</td><td>15.045</td><td>15.044</td></tr><tr><td>0.280</td><td>15.014</td><td>15.014</td><td>15.014</td></tr><tr><td>0.350</td><td>14.985</td><td>14.986</td><td>14.987</td></tr><tr><td>0.385</td><td>14.971</td><td>14.973</td><td>14.975</td></tr><tr><td>--</td><td>--</td><td>--</td><td>--</td></tr><tr><td>--</td><td>--</td><td>--</td><td>--</td></tr><tr><td>--</td><td>--</td><td>--</td><td>--</td></tr><tr><td>--</td><td>--</td><td>--</td><td>--</td></tr></table> <p>-15V : Rated Load Current</p>		Load Current [A]	Output Voltage [V]			Input Volt. 36[V]	Input Volt. 48[V]	Input Volt. 76[V]	0.000	15.255	15.255	15.254	0.070	15.132	15.132	15.132	0.140	15.083	15.082	15.082	0.210	15.047	15.045	15.044	0.280	15.014	15.014	15.014	0.350	14.985	14.986	14.987	0.385	14.971	14.973	14.975	--	--	--	--	--	--	--	--	--	--	--	--	--	--	--	--
Load Current [A]	Output Voltage [V]																																																					
	Input Volt. 36[V]	Input Volt. 48[V]	Input Volt. 76[V]																																																			
0.000	15.255	15.255	15.254																																																			
0.070	15.132	15.132	15.132																																																			
0.140	15.083	15.082	15.082																																																			
0.210	15.047	15.045	15.044																																																			
0.280	15.014	15.014	15.014																																																			
0.350	14.985	14.986	14.987																																																			
0.385	14.971	14.973	14.975																																																			
--	--	--	--																																																			
--	--	--	--																																																			
--	--	--	--																																																			
--	--	--	--																																																			
Item	Ripple-Noise	Temperature	25°C																																																			
Object	+15V0.35A	Testing Circuitry	Figure B																																																			
1.Graph																																																						
<div><div><div>Input Voltage</div><div>48V</div></div><div><div>Load</div><div>100%</div></div></div> <div><p>20[mV/div]</p><p>2[μs/div]</p><p>-15V : Rated Load Current</p></div>																																																						

- 4 -

BC-12153

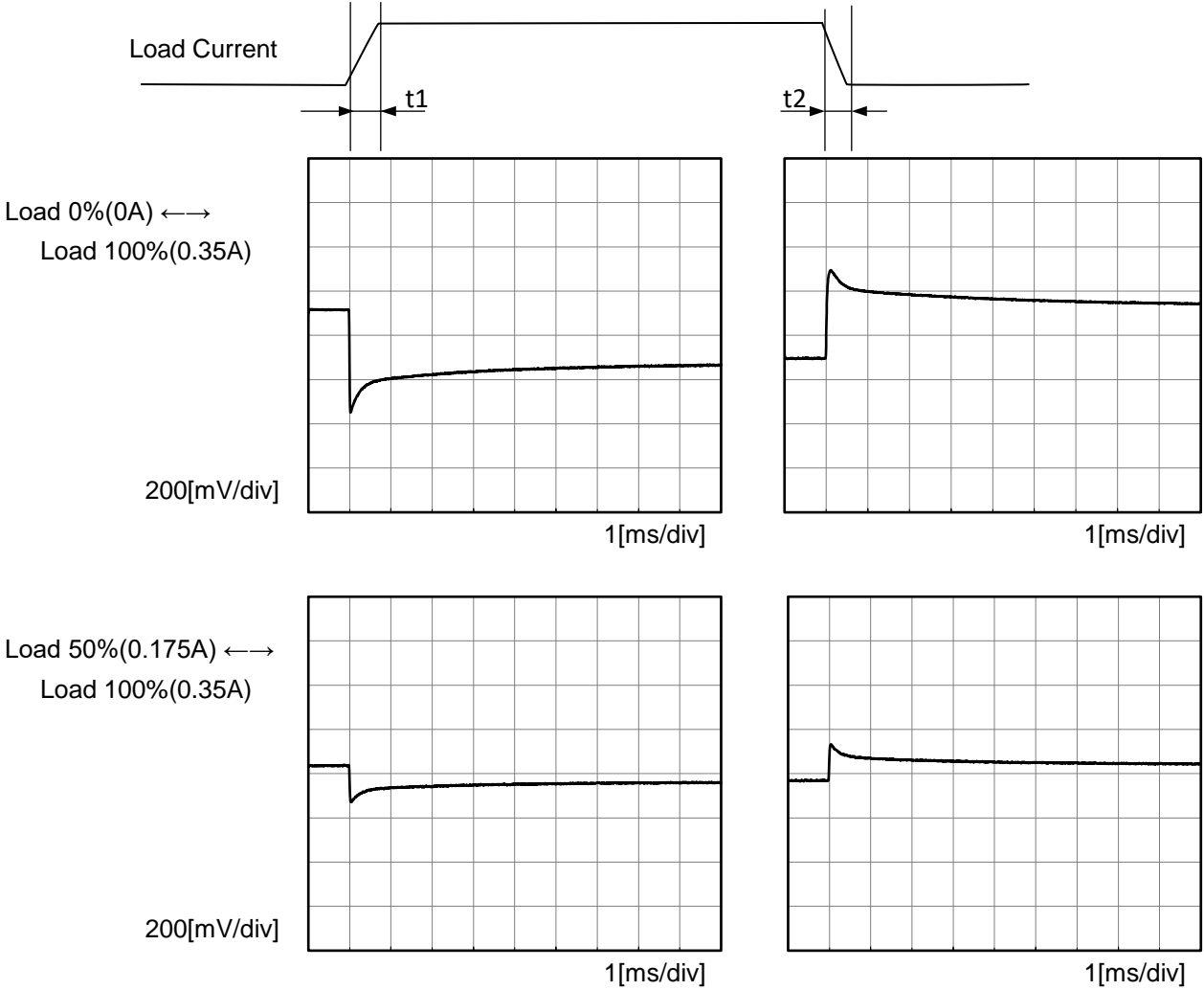
COSEL

COSEL																																																						
Model	MUW104815	Temperature	25°C																																																			
Item	Load Regulation	Testing Circuitry	Figure A																																																			
Object	-15V0.35A																																																					
1.Graph		2.Values																																																				
<div><div><div><div>—△—</div><div>Input Volt.</div><div>36V</div></div><div><div>---□---</div><div>Input Volt.</div><div>48V</div></div><div><div>---○---</div><div>Input Volt.</div><div>76V</div></div></div><div></div><p>Note: Slanted line shows the range of the rated load current.</p></div>		<table><tr><th rowspan="2">Load Current [A]</th><th colspan="3">Output Voltage [V]</th></tr><tr><th>Input Volt. 36[V]</th><th>Input Volt. 48[V]</th><th>Input Volt. 76[V]</th></tr><tr><td>0.000</td><td>-15.242</td><td>-15.243</td><td>-15.245</td></tr><tr><td>0.070</td><td>-15.123</td><td>-15.124</td><td>-15.126</td></tr><tr><td>0.140</td><td>-15.074</td><td>-15.073</td><td>-15.074</td></tr><tr><td>0.210</td><td>-15.038</td><td>-15.036</td><td>-15.036</td></tr><tr><td>0.280</td><td>-15.007</td><td>-15.006</td><td>-15.006</td></tr><tr><td>0.350</td><td>-14.979</td><td>-14.979</td><td>-14.980</td></tr><tr><td>0.385</td><td>-14.967</td><td>-14.967</td><td>-14.968</td></tr><tr><td>--</td><td>--</td><td>--</td><td>--</td></tr><tr><td>--</td><td>--</td><td>--</td><td>--</td></tr><tr><td>--</td><td>--</td><td>--</td><td>--</td></tr><tr><td>--</td><td>--</td><td>--</td><td>--</td></tr></table> <p>+15V : Rated Load Current</p>		Load Current [A]	Output Voltage [V]			Input Volt. 36[V]	Input Volt. 48[V]	Input Volt. 76[V]	0.000	-15.242	-15.243	-15.245	0.070	-15.123	-15.124	-15.126	0.140	-15.074	-15.073	-15.074	0.210	-15.038	-15.036	-15.036	0.280	-15.007	-15.006	-15.006	0.350	-14.979	-14.979	-14.980	0.385	-14.967	-14.967	-14.968	--	--	--	--	--	--	--	--	--	--	--	--	--	--	--	--
Load Current [A]	Output Voltage [V]																																																					
	Input Volt. 36[V]	Input Volt. 48[V]	Input Volt. 76[V]																																																			
0.000	-15.242	-15.243	-15.245																																																			
0.070	-15.123	-15.124	-15.126																																																			
0.140	-15.074	-15.073	-15.074																																																			
0.210	-15.038	-15.036	-15.036																																																			
0.280	-15.007	-15.006	-15.006																																																			
0.350	-14.979	-14.979	-14.980																																																			
0.385	-14.967	-14.967	-14.968																																																			
--	--	--	--																																																			
--	--	--	--																																																			
--	--	--	--																																																			
--	--	--	--																																																			
Item	Ripple-Noise	Temperature	25°C																																																			
Object	-15V0.35A	Testing Circuitry	Figure B																																																			
1.Graph																																																						
<div><div><div>Input Voltage</div><div>48V</div></div><div><div>Load</div><div>100%</div></div><div></div><p>+15V : Rated Load Current</p></div> <div></div>																																																						
		BC-12153																																																				



Model		MUW104815	Temperature 25°C Testing Circuitry Figure A
Item		Dynamic Load Response	
Object		+15V0.35A	

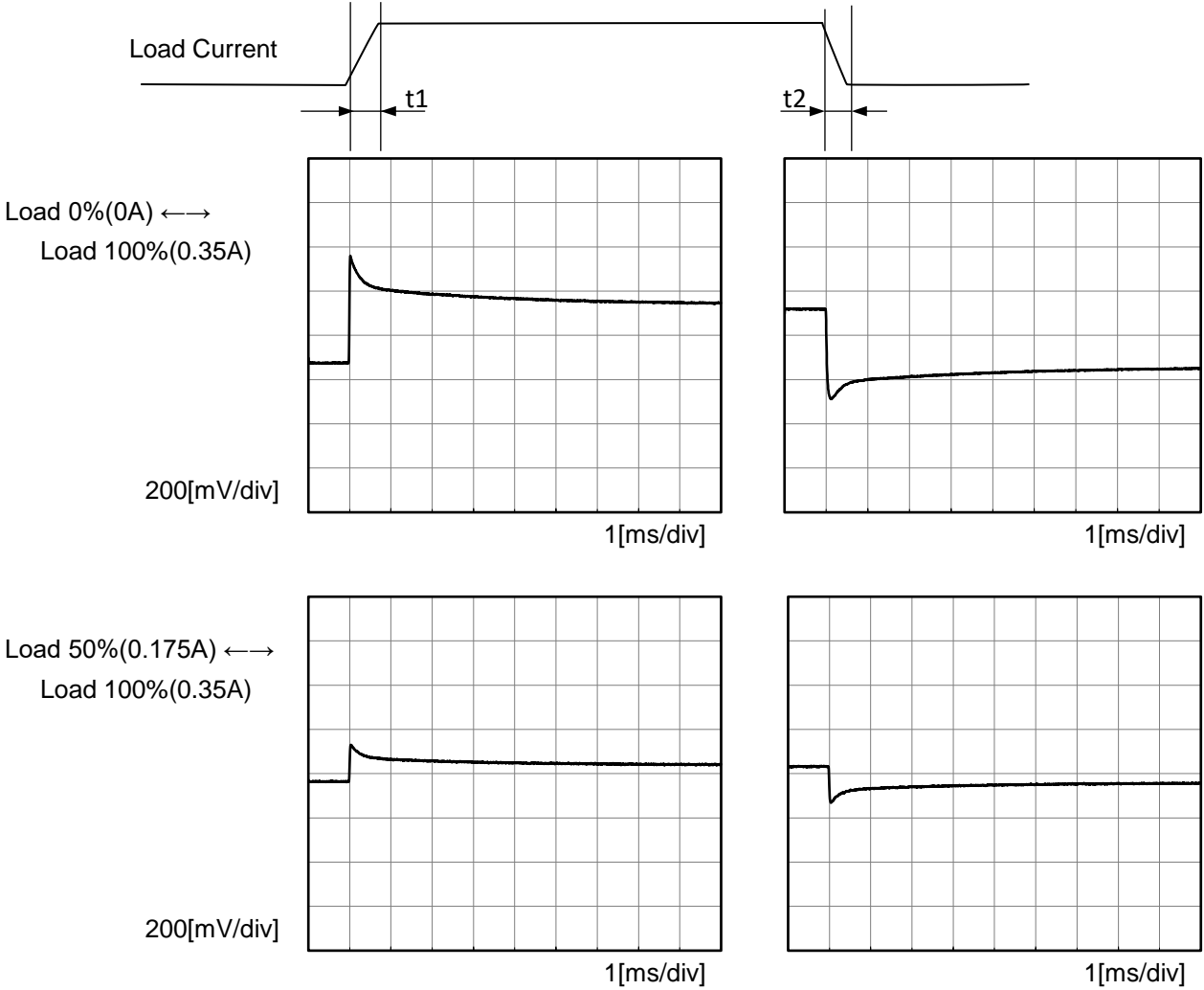
Input Volt. 48 V
-15V: Rated Load Current
Cycle 100 ms
Response. t1=t2=50μs. Typ





Model		MUW104815	Temperature 25°C Testing Circuitry Figure A
Item		Dynamic Load Response	
Object		-15V0.35A	

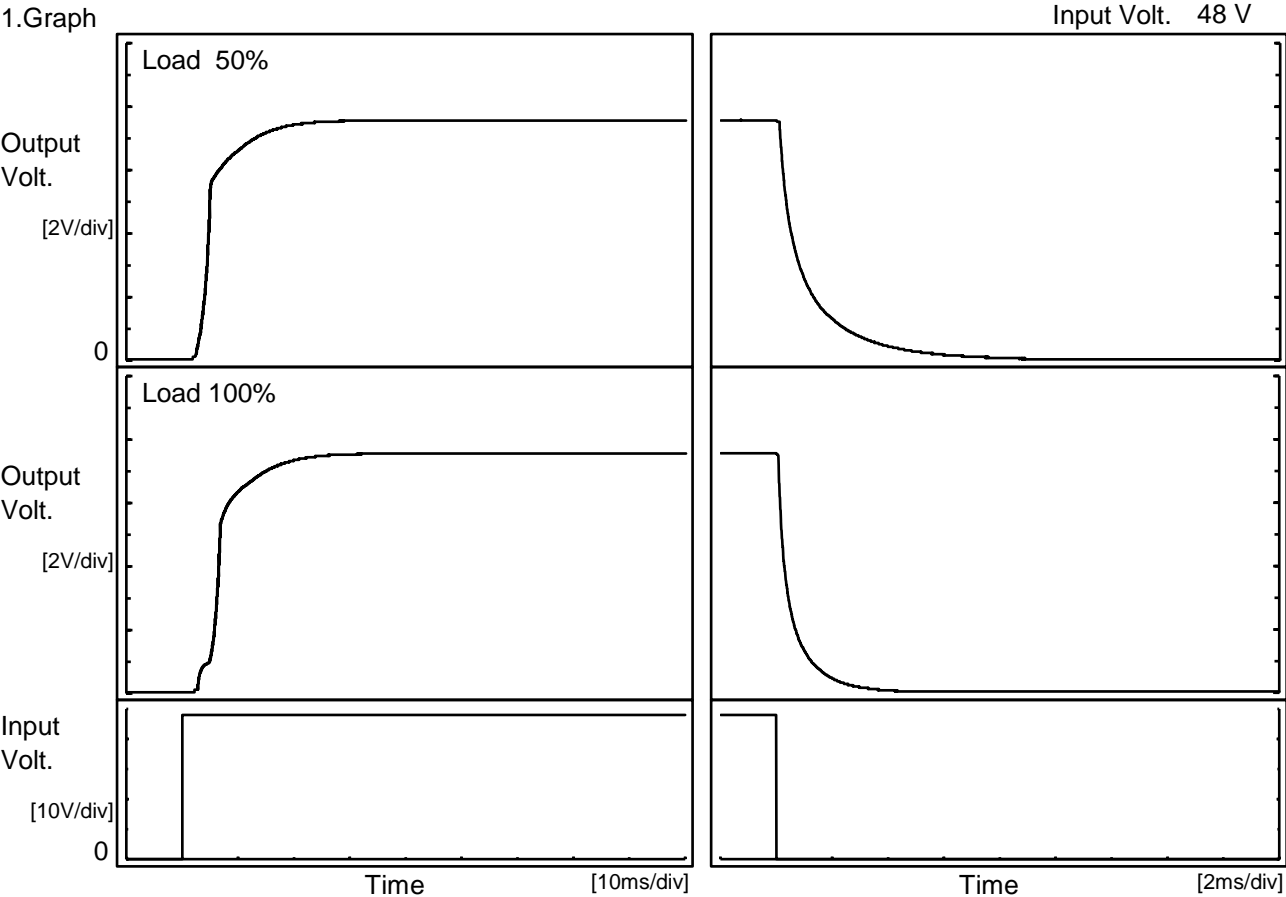
Input Volt. 48 V
+15V : Rated Load Current
Cycle 100 ms
Response. t1=t2=50μs. Typ





Model		MUW104815	Temperature 25°C Testing Circuitry Figure A
Item		Rise and Fall Time	
Object		+15V0.35A	

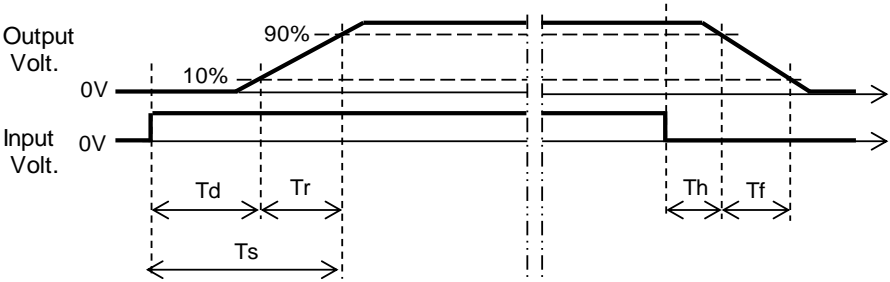
1.Graph



-15V:Load Current is same as +15V

2.Values

		[ms]				
Load	Time	Td	Tr	Ts	Th	Tf
50 %		3.1	8.0	11.1	0.2	2.8
100 %		3.5	9.5	13.0	0.1	1.4

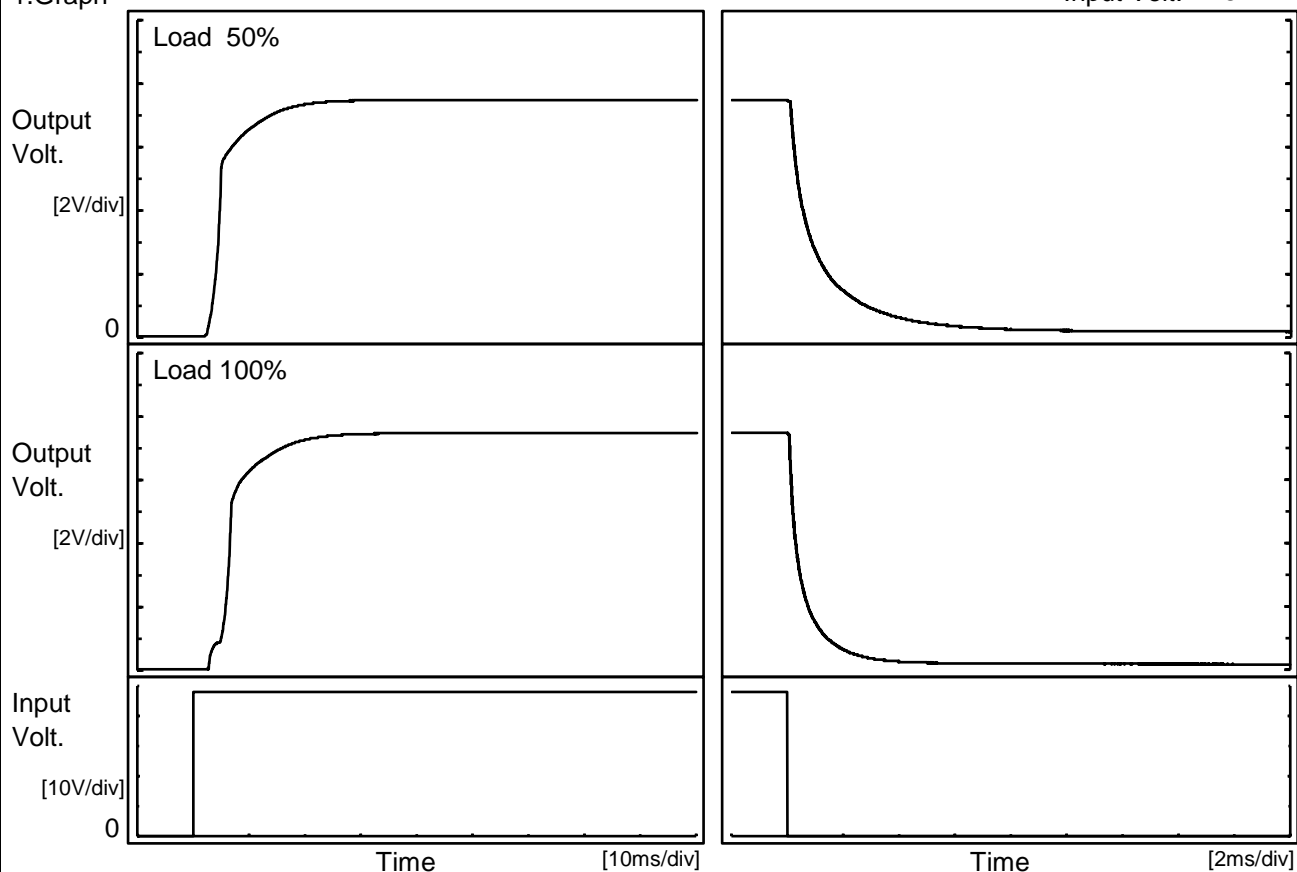


COSEL

Model	MUW104815	Temperature 25°C Testing Circuitry Figure A
Item	Rise and Fall Time	
Object	-15V0.35A	

1.Graph

Input Volt. 48 V

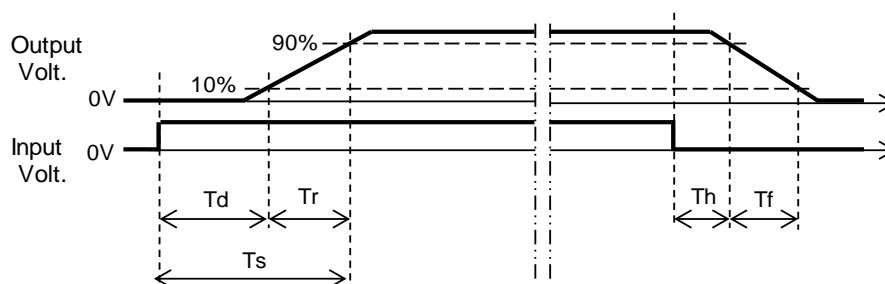


+15V:Load Current is same as -15V

2.Values

[ms]

Load \ Time	Td	Tr	Ts	Th	Tf
50 %	3.2	8.5	11.7	0.2	3.3
100 %	3.7	9.9	13.6	0.1	1.6



COSEL

<div>COSEL</div>																																																										
Model	MUW104815																																																									
Item	Overcurrent Protection	Temperature	25°C																																																							
Object	+15V0.35A	Testing Circuitry	Figure A																																																							
1.Graph		2.Values																																																								
<div><div><div></div><div></div><div></div></div><div><div>Input Volt.</div><div>Input Volt.</div><div>Input Volt.</div></div><div><div>36V</div><div>48V</div><div>76V</div></div></div>		<table><tr><th rowspan="2">Output Voltage [V]</th><th colspan="3">Load Current [A]</th></tr><tr><th>Input Volt. 36[V]</th><th>Input Volt. 48[V]</th><th>Input Volt. 76[V]</th></tr><tr><td>14.25</td><td>0.65</td><td>0.74</td><td>0.85</td></tr><tr><td>13.50</td><td>0.68</td><td>0.78</td><td>0.89</td></tr><tr><td>12.00</td><td>0.77</td><td>0.86</td><td>0.98</td></tr><tr><td>10.50</td><td>0.86</td><td>0.96</td><td>1.09</td></tr><tr><td>9.00</td><td>0.95</td><td>1.05</td><td>1.13</td></tr><tr><td>7.50</td><td>0.98</td><td>1.04</td><td>1.10</td></tr><tr><td>6.00</td><td>0.97</td><td>1.02</td><td>1.06</td></tr><tr><td>4.50</td><td>0.98</td><td>1.02</td><td>1.03</td></tr><tr><td>3.00</td><td>1.01</td><td>1.03</td><td>1.03</td></tr><tr><td>1.50</td><td>1.08</td><td>1.09</td><td>1.09</td></tr><tr><td>0.00</td><td>1.39</td><td>1.42</td><td>1.66</td></tr><tr><td>--</td><td>-</td><td>-</td><td>-</td></tr></table> <div>-15V : Rated Load Current</div>		Output Voltage [V]	Load Current [A]			Input Volt. 36[V]	Input Volt. 48[V]	Input Volt. 76[V]	14.25	0.65	0.74	0.85	13.50	0.68	0.78	0.89	12.00	0.77	0.86	0.98	10.50	0.86	0.96	1.09	9.00	0.95	1.05	1.13	7.50	0.98	1.04	1.10	6.00	0.97	1.02	1.06	4.50	0.98	1.02	1.03	3.00	1.01	1.03	1.03	1.50	1.08	1.09	1.09	0.00	1.39	1.42	1.66	--	-	-	-
Output Voltage [V]	Load Current [A]																																																									
	Input Volt. 36[V]	Input Volt. 48[V]	Input Volt. 76[V]																																																							
14.25	0.65	0.74	0.85																																																							
13.50	0.68	0.78	0.89																																																							
12.00	0.77	0.86	0.98																																																							
10.50	0.86	0.96	1.09																																																							
9.00	0.95	1.05	1.13																																																							
7.50	0.98	1.04	1.10																																																							
6.00	0.97	1.02	1.06																																																							
4.50	0.98	1.02	1.03																																																							
3.00	1.01	1.03	1.03																																																							
1.50	1.08	1.09	1.09																																																							
0.00	1.39	1.42	1.66																																																							
--	-	-	-																																																							
Object	-15V0.35A																																																									
1.Graph		2.Values																																																								
<div><div><div></div><div></div><div></div></div><div><div>Input Volt.</div><div>Input Volt.</div><div>Input Volt.</div></div><div><div>36V</div><div>48V</div><div>76V</div></div></div>		<table><tr><th rowspan="2">Output Voltage [V]</th><th colspan="3">Load Current [A]</th></tr><tr><th>Input Volt. 36[V]</th><th>Input Volt. 48[V]</th><th>Input Volt. 76[V]</th></tr><tr><td>-14.25</td><td>0.64</td><td>0.73</td><td>0.84</td></tr><tr><td>-13.50</td><td>0.68</td><td>0.77</td><td>0.88</td></tr><tr><td>-12.00</td><td>0.76</td><td>0.85</td><td>0.97</td></tr><tr><td>-10.50</td><td>0.85</td><td>0.95</td><td>1.08</td></tr><tr><td>-9.00</td><td>0.96</td><td>1.04</td><td>1.13</td></tr><tr><td>-7.50</td><td>0.97</td><td>1.04</td><td>1.09</td></tr><tr><td>-6.00</td><td>0.97</td><td>1.02</td><td>1.06</td></tr><tr><td>-4.50</td><td>0.97</td><td>1.01</td><td>1.03</td></tr><tr><td>-3.00</td><td>1.00</td><td>1.02</td><td>1.03</td></tr><tr><td>-1.50</td><td>1.07</td><td>1.09</td><td>1.09</td></tr><tr><td>0.00</td><td>1.38</td><td>1.38</td><td>1.48</td></tr><tr><td>--</td><td>-</td><td>-</td><td>-</td></tr></table> <div>+15V : Rated Load Current</div>		Output Voltage [V]	Load Current [A]			Input Volt. 36[V]	Input Volt. 48[V]	Input Volt. 76[V]	-14.25	0.64	0.73	0.84	-13.50	0.68	0.77	0.88	-12.00	0.76	0.85	0.97	-10.50	0.85	0.95	1.08	-9.00	0.96	1.04	1.13	-7.50	0.97	1.04	1.09	-6.00	0.97	1.02	1.06	-4.50	0.97	1.01	1.03	-3.00	1.00	1.02	1.03	-1.50	1.07	1.09	1.09	0.00	1.38	1.38	1.48	--	-	-	-
Output Voltage [V]	Load Current [A]																																																									
	Input Volt. 36[V]	Input Volt. 48[V]	Input Volt. 76[V]																																																							
-14.25	0.64	0.73	0.84																																																							
-13.50	0.68	0.77	0.88																																																							
-12.00	0.76	0.85	0.97																																																							
-10.50	0.85	0.95	1.08																																																							
-9.00	0.96	1.04	1.13																																																							
-7.50	0.97	1.04	1.09																																																							
-6.00	0.97	1.02	1.06																																																							
-4.50	0.97	1.01	1.03																																																							
-3.00	1.00	1.02	1.03																																																							
-1.50	1.07	1.09	1.09																																																							
0.00	1.38	1.38	1.48																																																							
--	-	-	-																																																							
Note: Slanted line shows the range of the rated load current.																																																										

- 10 -

BC-12153

COSEL

		Testing Circuitry Figure A
Model	MUW104815	
Item	Ambient Temperature Drift	
Object	+15V0.35A	

1.Values

Load 100%

Ambient Temperature[°C]	Output Voltage [V]		
	Input Volt. 36V	Input Volt. 48V	Input Volt. 76V
-40	14.901	14.902	14.905
25	14.985	14.986	14.987
85	14.993	14.995	14.996

-15V: Load Current is same as +15V

Item	Minimum Input Voltage for Regulated Output Voltage	Testing Circuitry Figure A
Object	+15V0.35A	

1.Values

Ambient Temperature[°C]	Input Voltage [V]	
	Load 50%	Load 100%
-40	28.4	28.4
25	28.5	28.5
85	28.5	28.5

-15V: Load Current is same as +15V

COSEL

		Testing Circuitry Figure A
Model	MUW104815	
Item	Ambient Temperature Drift	
Object	-15V0.35A	

1.Values

Load 100%

Ambient Temperature[°C]	Output Voltage [V]		
	Input Volt. 36V	Input Volt. 48V	Input Volt. 76V
-40	-14.893	-14.893	-14.895
25	-14.980	-14.979	-14.979
85	-14.993	-14.992	-14.992

+15V: Load Current is same as -15V

Item	Minimum Input Voltage for Regulated Output Voltage	Testing Circuitry Figure A
Object	-15V0.35A	

1.Values

Ambient Temperature[°C]	Input Voltage [V]	
	Load 50%	Load 100%
-40	28.4	28.4
25	28.5	28.5
85	28.5	28.5

+15V: Load Current is same as -15V

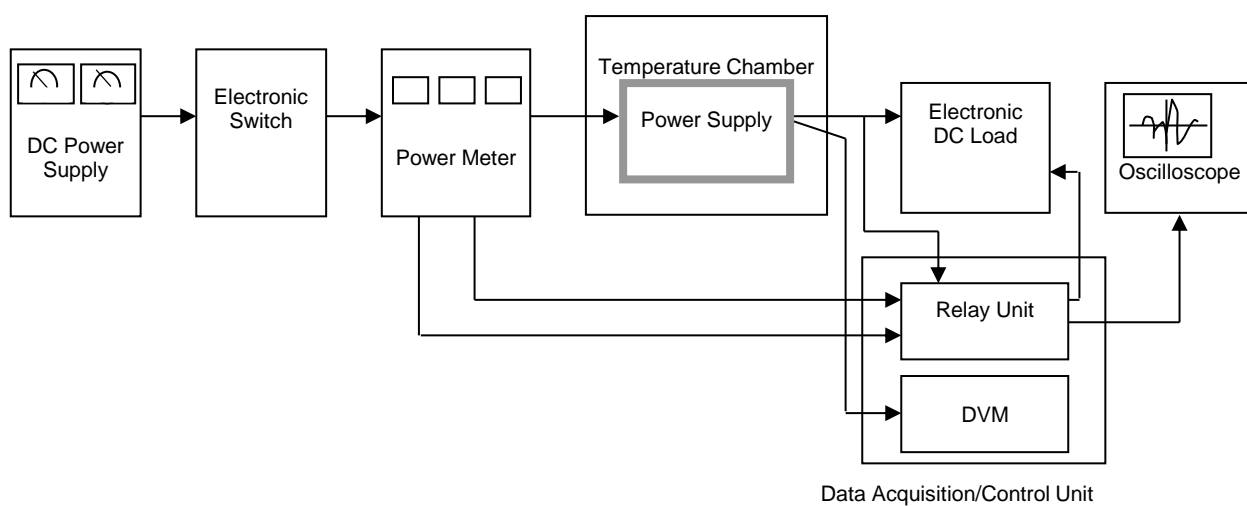


Figure A

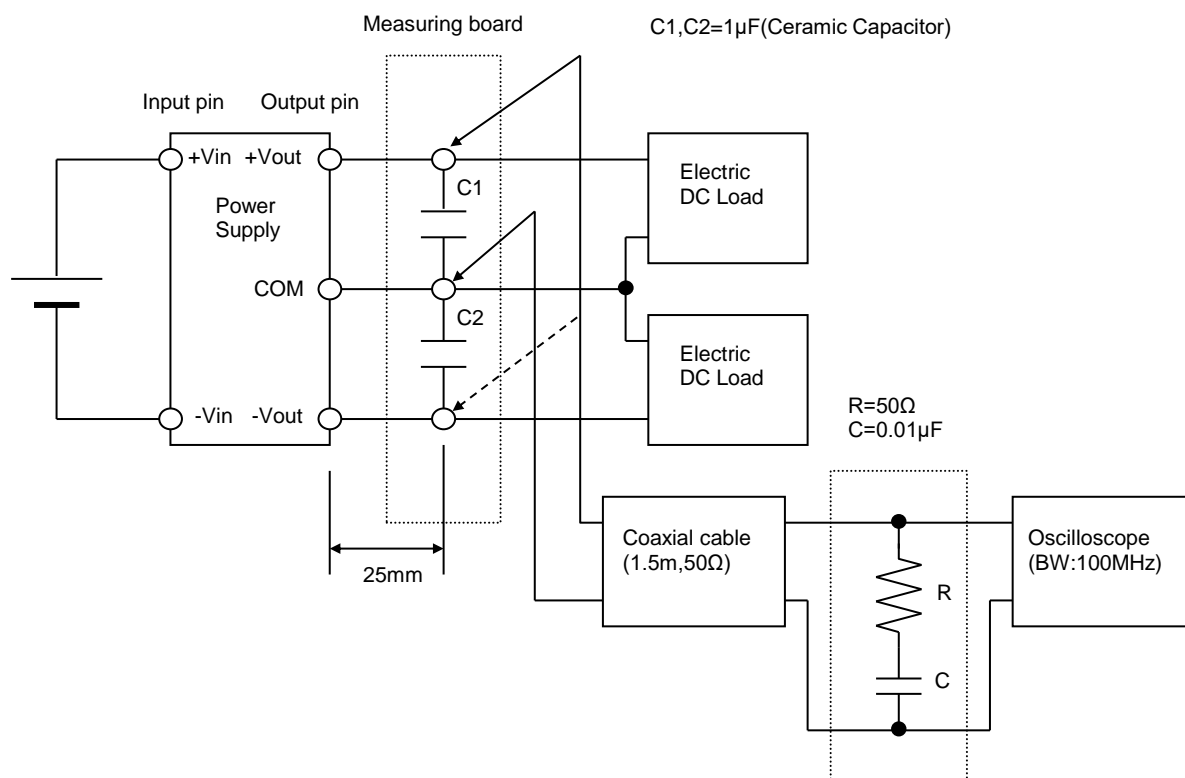


Figure B