



TEST DATA OF NAC-40-□□□

Noise Filter

Jul. 09 , 2021

Approved by : Tadayuki Noda
Design Manager

Prepared by : Naoya Kunishima
Design Engineer

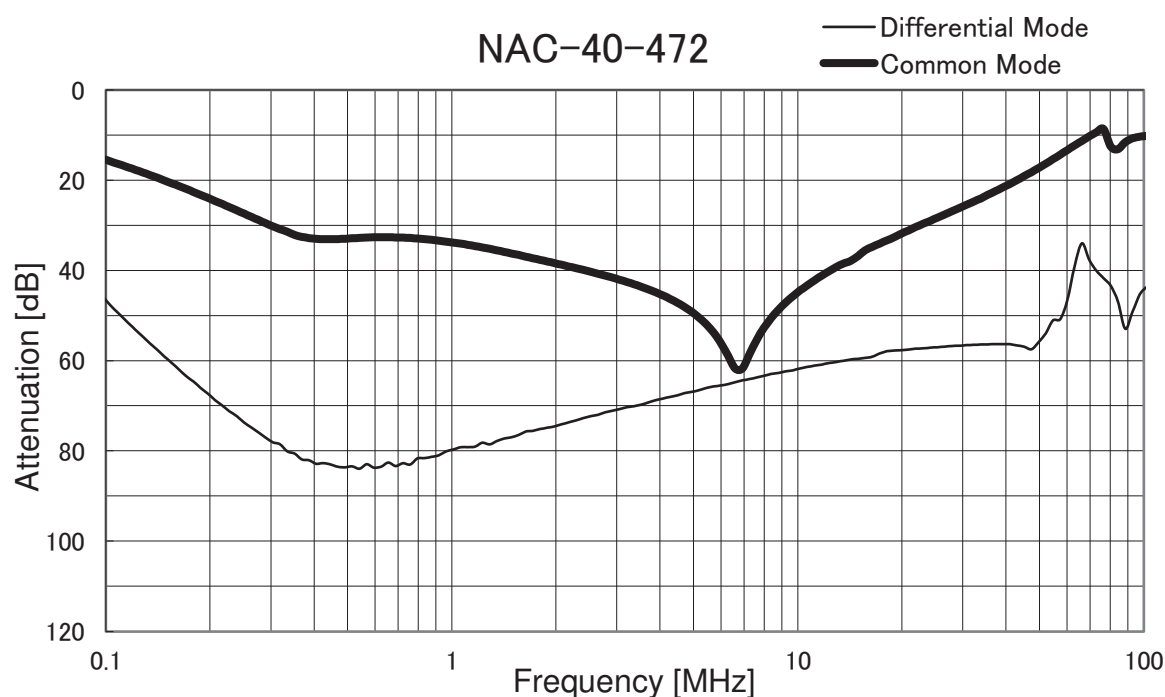
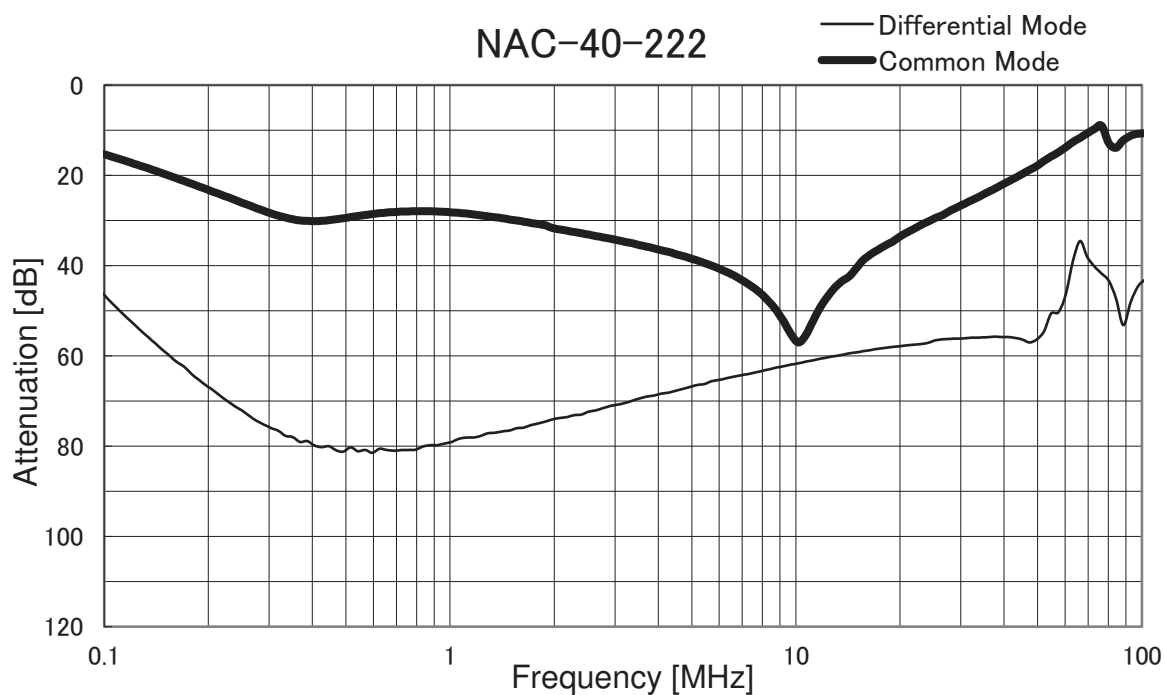
COSEL CO.,LTD.

CONTENTS

1. Attenuation Characteristics	1
2. Pulse Attenuation Characteristics	4
3. Leakage Current	6
4. Figure of Testing Circuitry	7
(Final Page 8)	

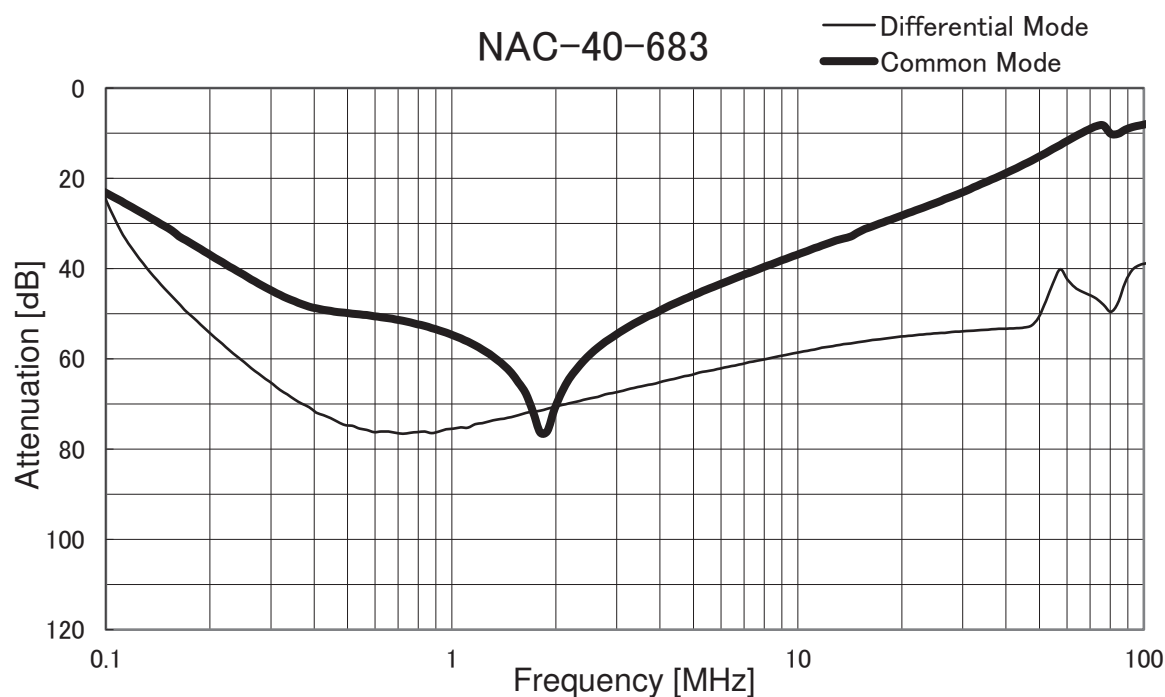
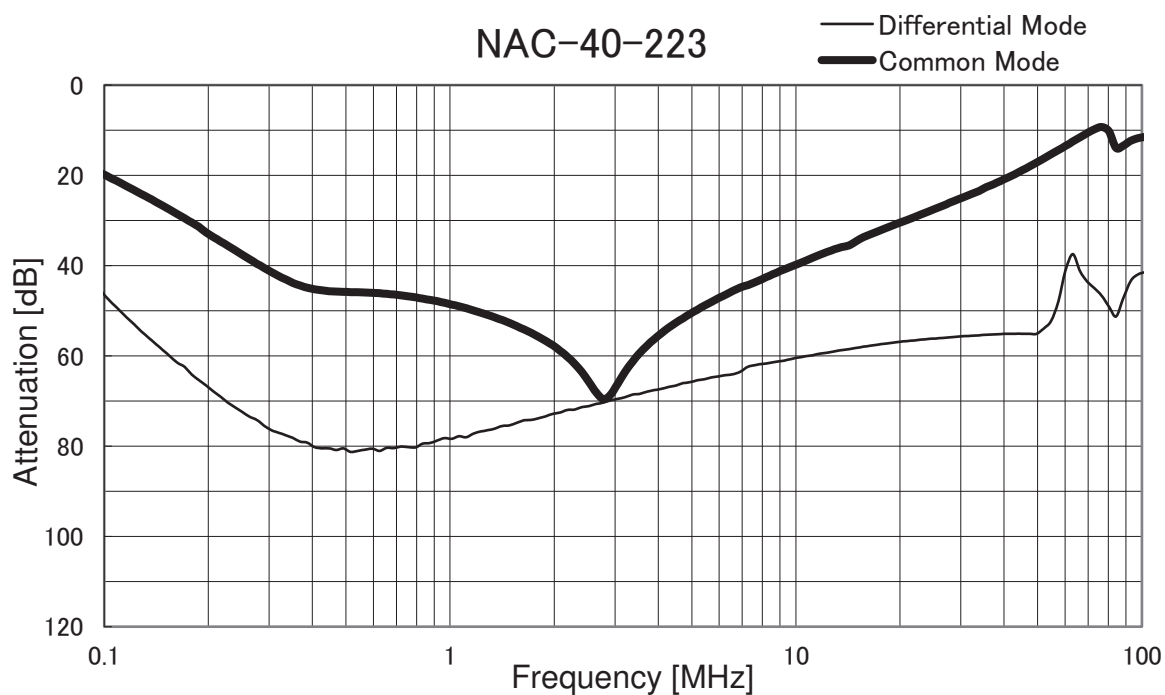


Model		NAC-40-□□□	Temperature 25°C Testing Circuitry Figure A
Item		Attenuation Characteristics	
Object		—	



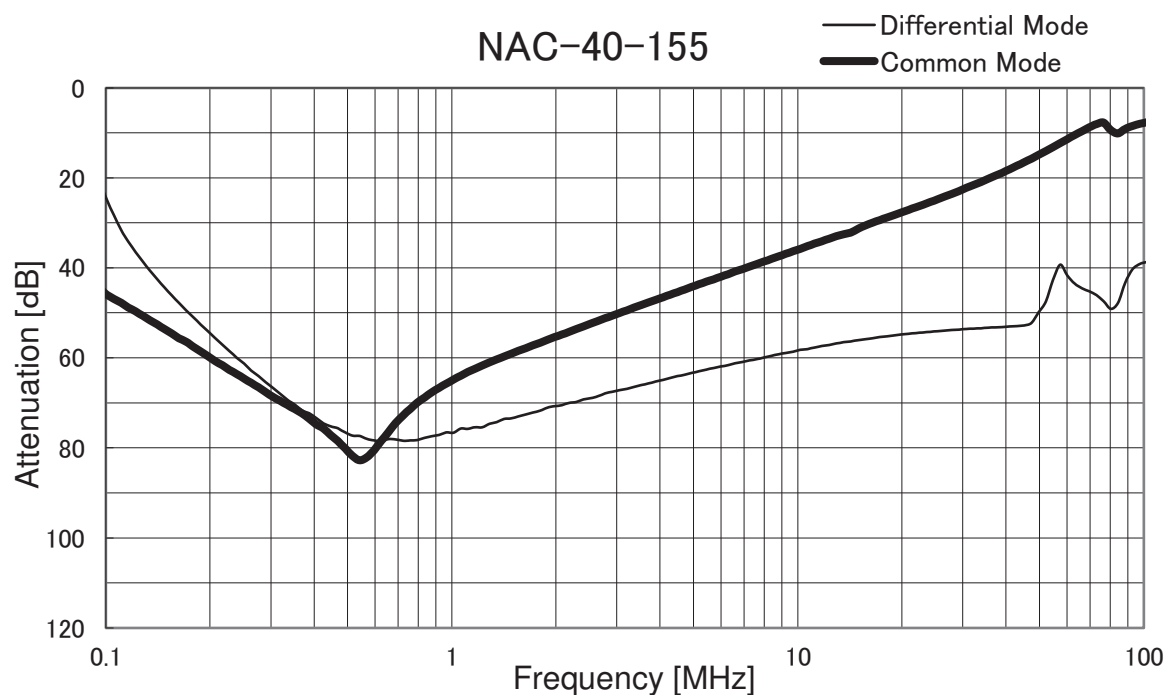
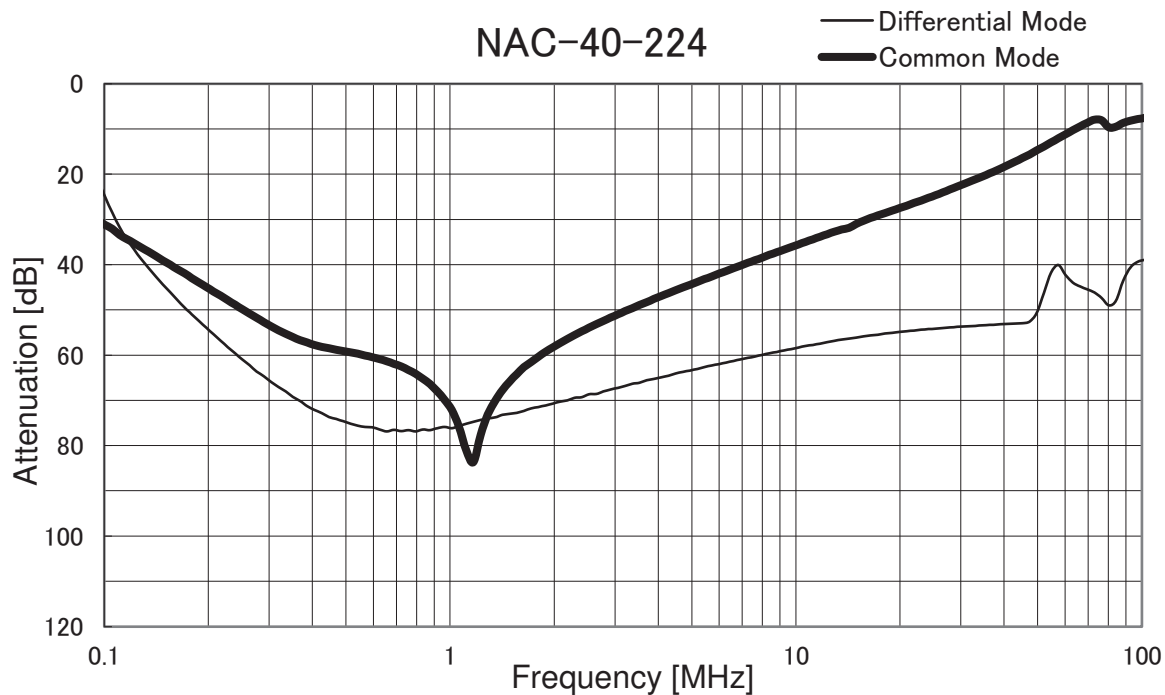


Model	NAC-40-□□□	Temperature	25°C
Item	Attenuation Characteristics	Testing Circuitry	Figure A
Object			



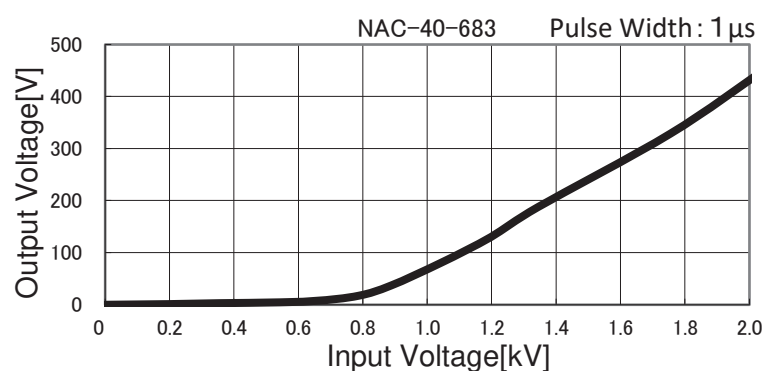
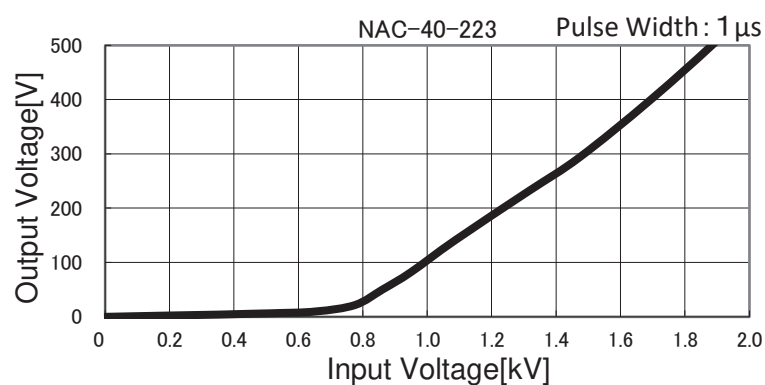
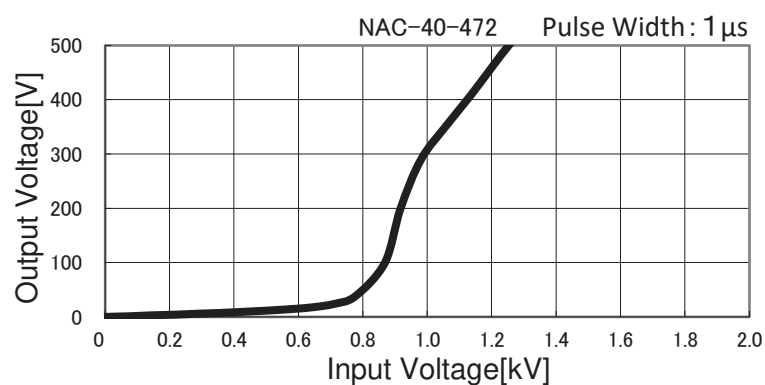
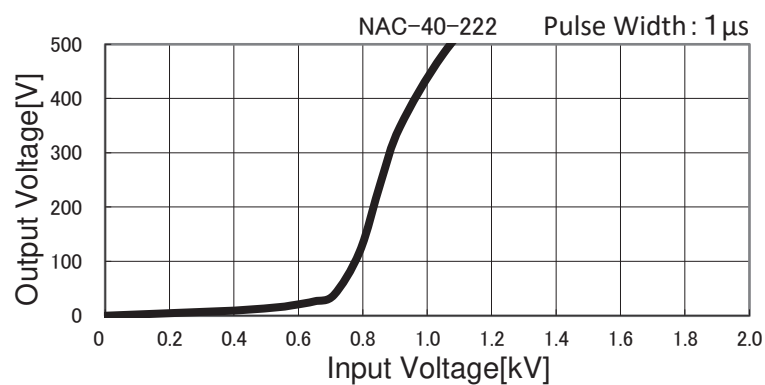


Model		NAC-40-□□□	
Item		Attenuation Characteristics	Temperature 25°C Testing Circuitry Figure A
Object			



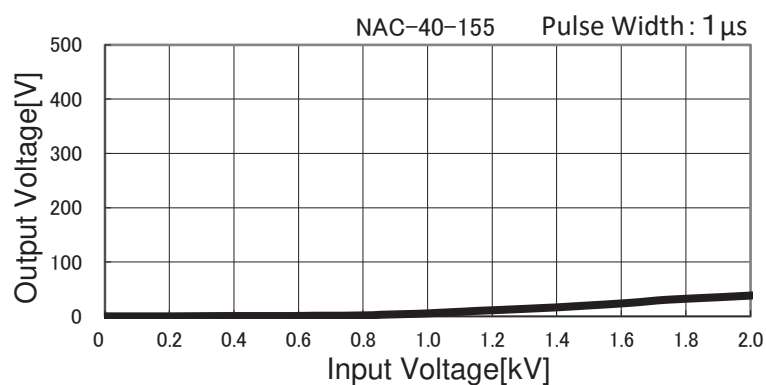
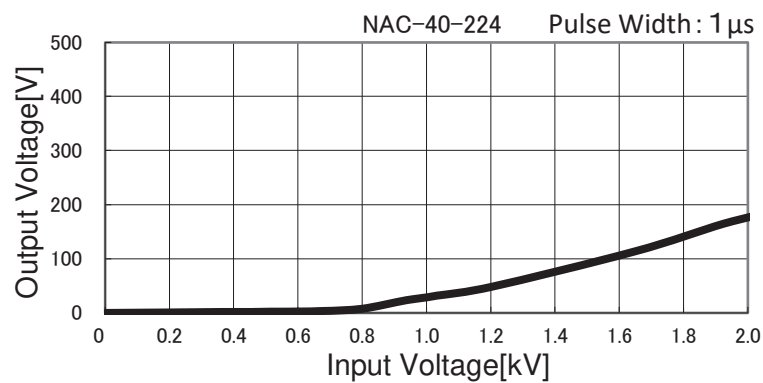


Model		NAC-40-□□□	Temperature 25°C Testing Circuitry Figure B
Item		Pulse Attenuation Characteristics	
Object		—	





Model	NAC-40-□□□		
Item	Pulse Attenuation Characteristics	Temperature	25°C
Object		Testing Circuitry	Figure B





Model		NAC-40-□□□	Temperature 25°C Testing Circuitry Figure C
Item		Leakage Current	
Object		_____	

1.Results

[mA]

Model	Standards	Input Volt.					Note
		100[V]	125[V]	230[V]	250[V]	277[V]	
NAC-40-222	UL60939	0.085	0.100	0.220	0.235	0.270	
NAC-40-472	UL60939	0.175	0.225	0.480	0.530	0.600	
NAC-40-223	UL60939	0.900	1.000	1.950	2.050	2.300	
NAC-40-683	UL60939	1.200	1.500	2.800	3.000	3.450	
NAC-40-224	UL60939	3.500	4.400	8.000	8.600	9.600	
NAC-40-155	UL60939	15.000	19.000	35.000	39.000	42.000	

2.Condition

Leakage current value is concluded after measuring both phases of AC input and by choosing the larger one.

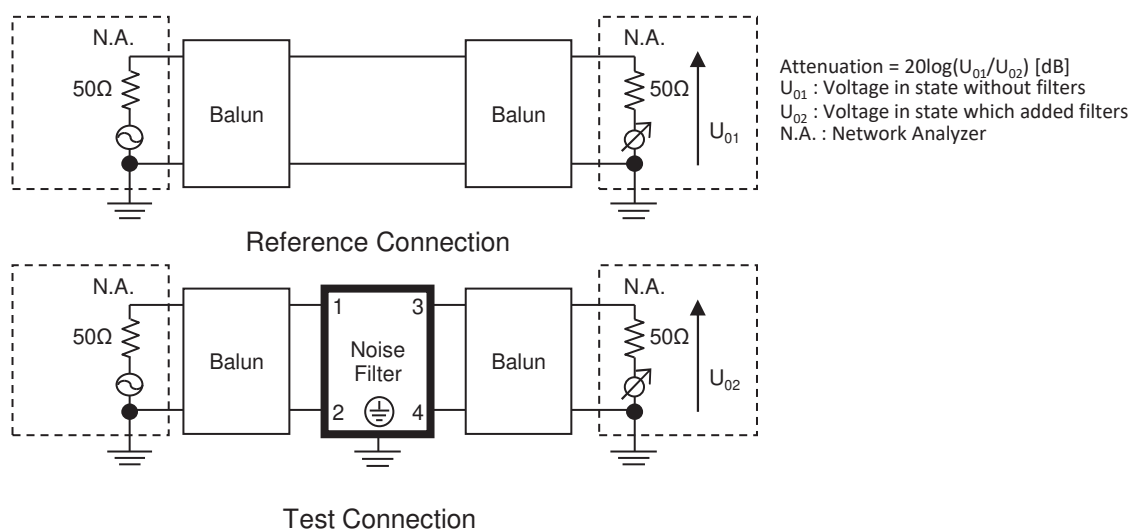


Figure A - 1 Differential mode attenuation measurement

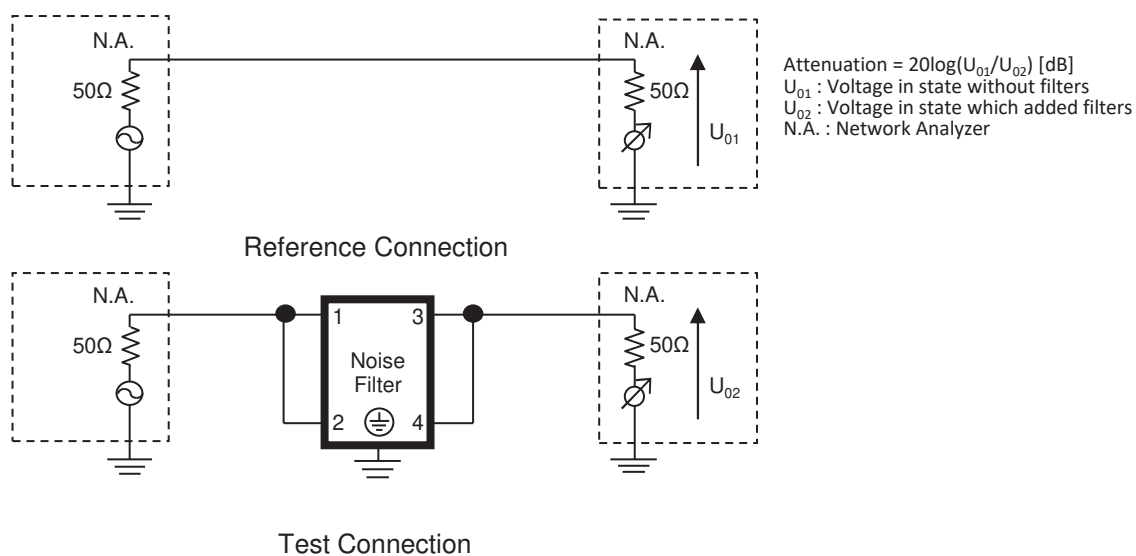
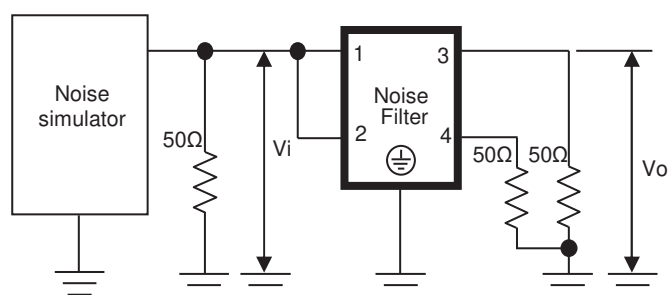
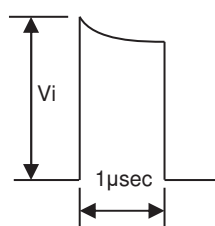


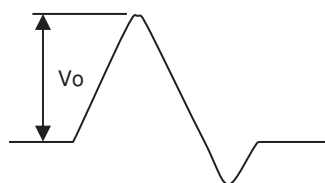
Figure A - 2 Common mode attenuation measurement



Pulse attenuation measurement



Input impulse waveform



Output impulse waveform

Figure B Pulse attenuation measurement

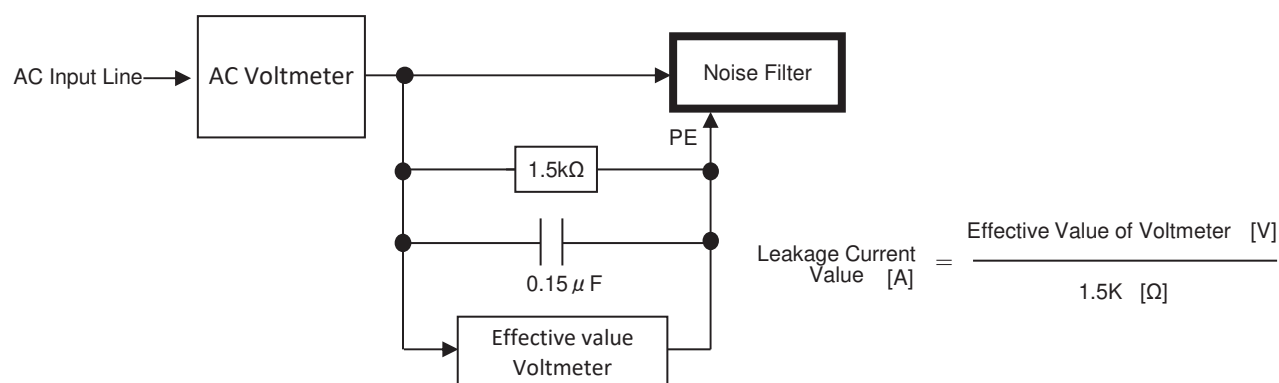


Figure C Leakage current measurement (UL60939)