



TEST DATA OF NAH-50-□□□

Noise Filter

Jul. 09 , 2021

Approved by : Tadayuki Noda
Design Manager

Prepared by : Naoya Kunishima
Design Engineer

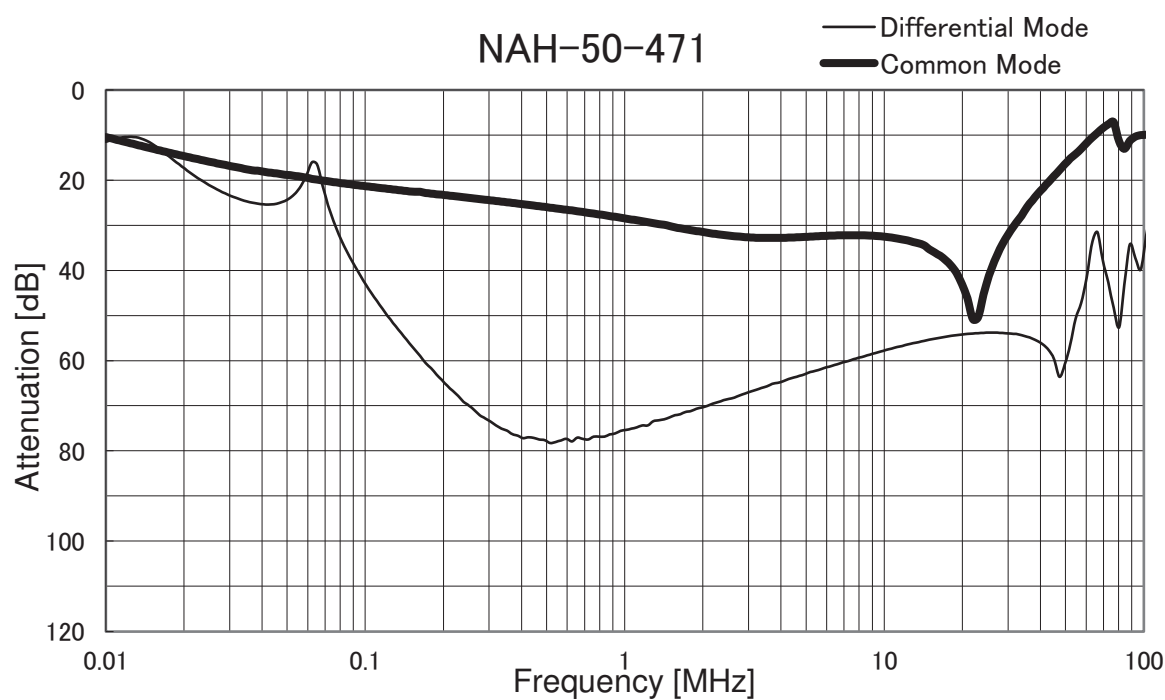
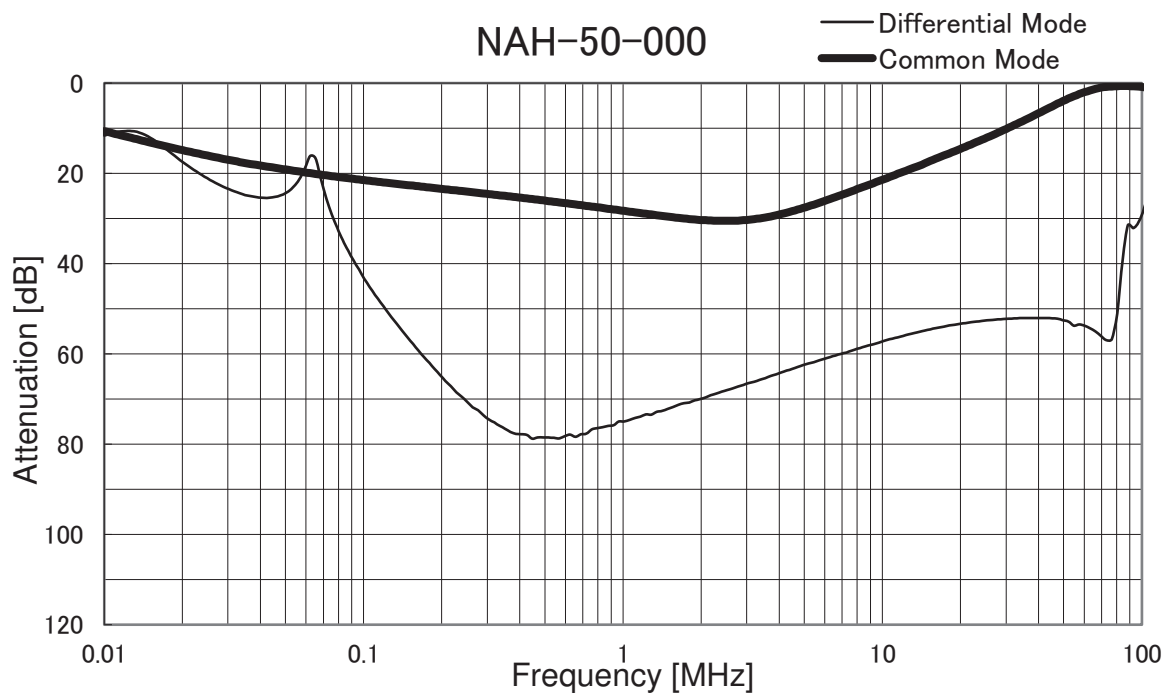
COSEL CO.,LTD.

CONTENTS

1.Attenuation Characteristics	1
2.Pulse Attenuation Characteristics	4
3.Leakage Current	6
4.Figure of Testing Circuitry	7
(Final Page 8)	

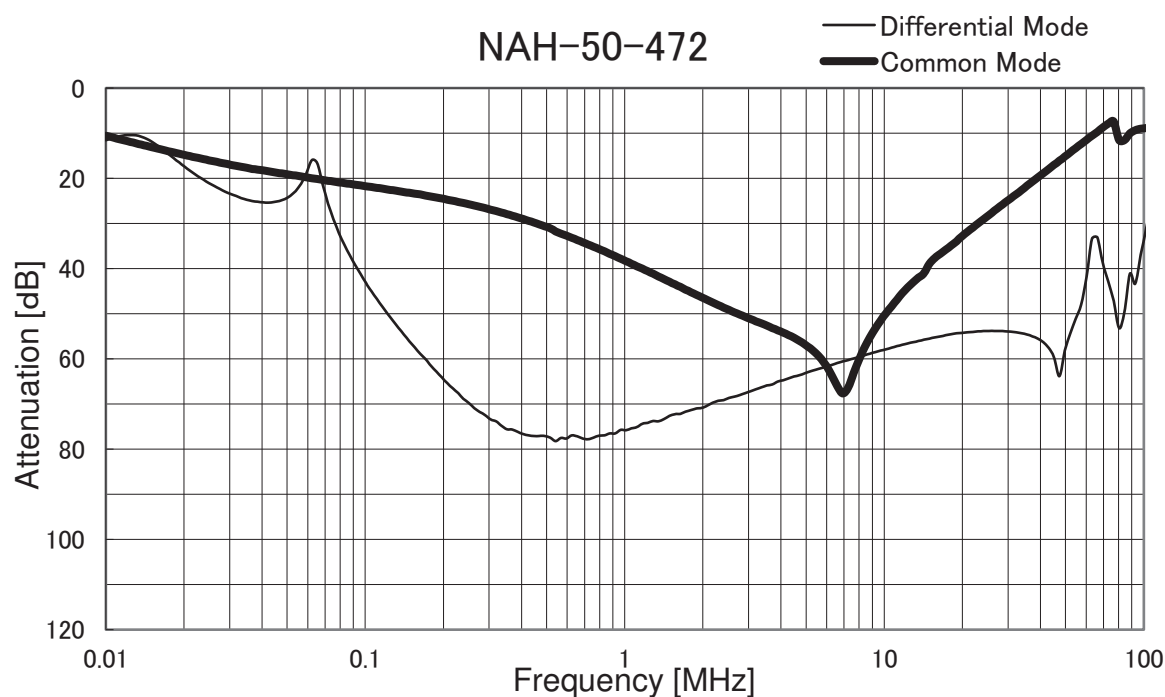
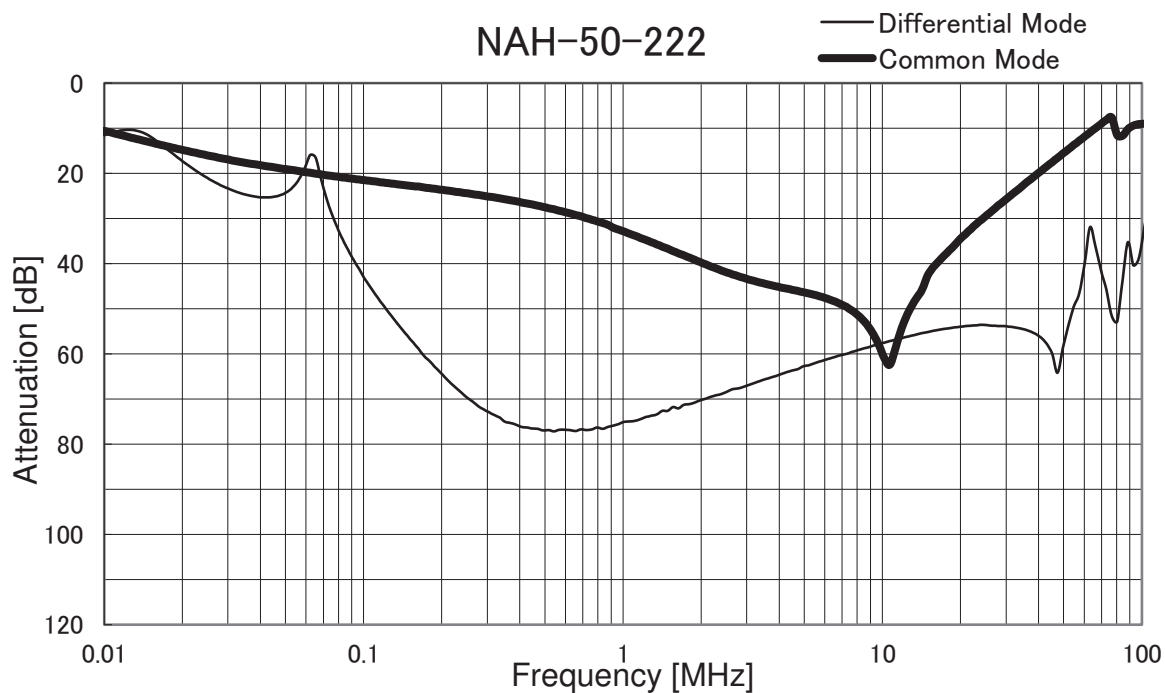


Model		NAH-50-□□□	Temperature 25°C Testing Circuitry Figure A
Item		Attenuation Characteristics	
Object		—	



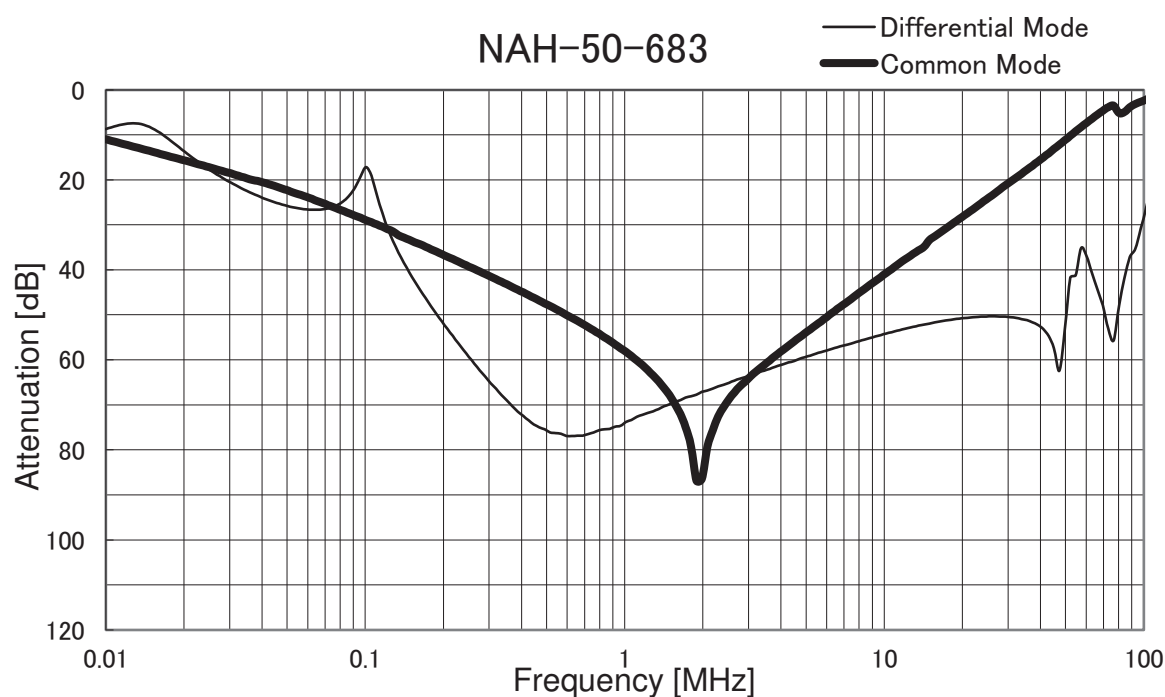
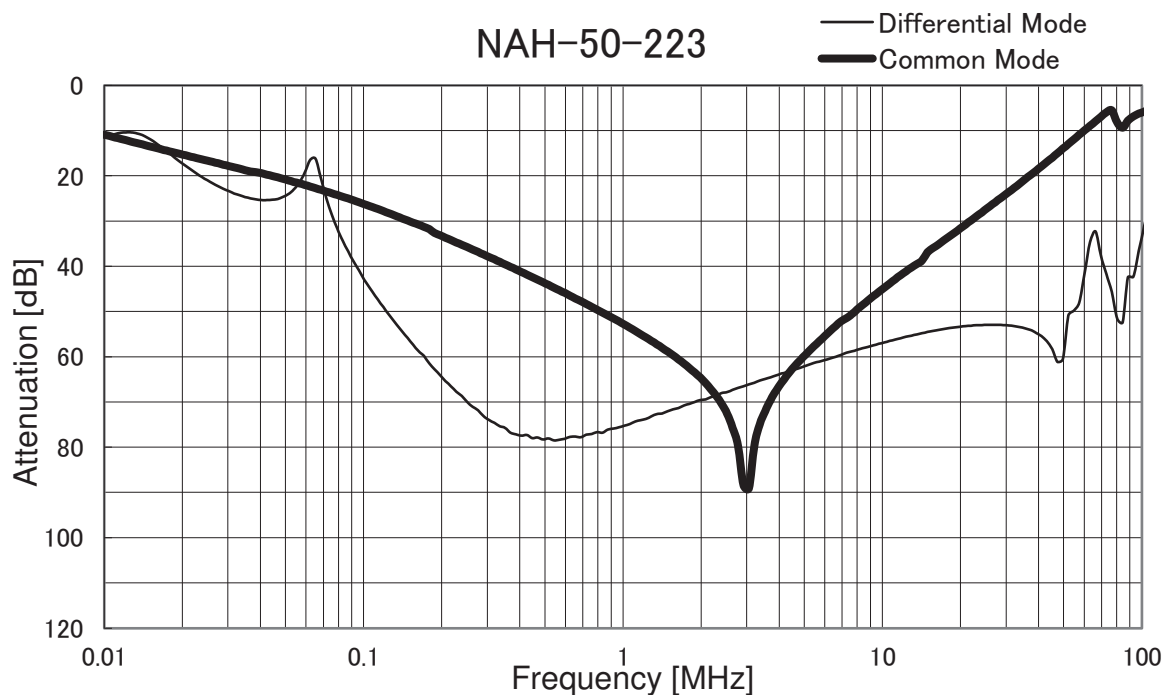


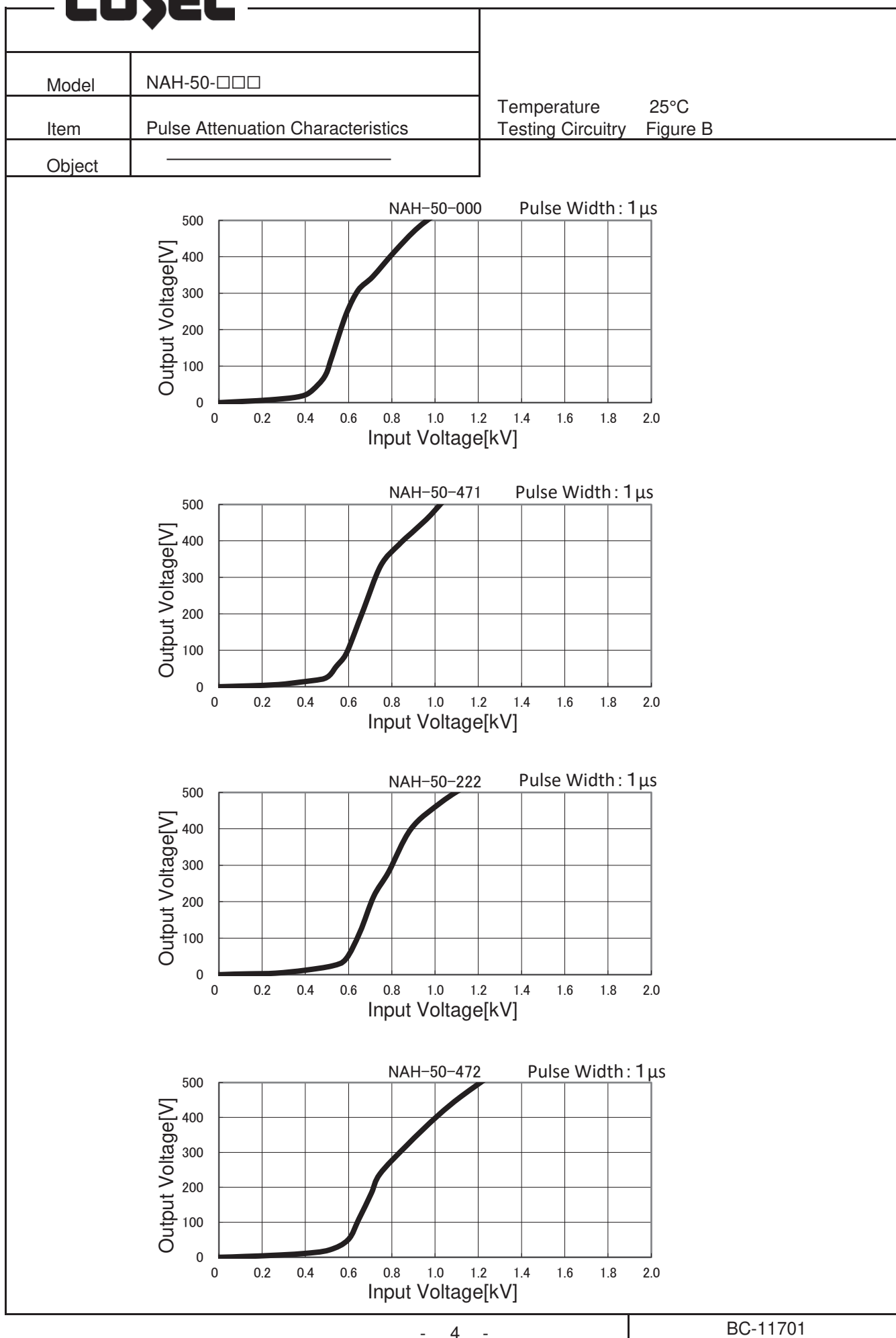
Model		NAH-50-□□□	Temperature 25°C Testing Circuitry Figure A
Item		Attenuation Characteristics	
Object		—	





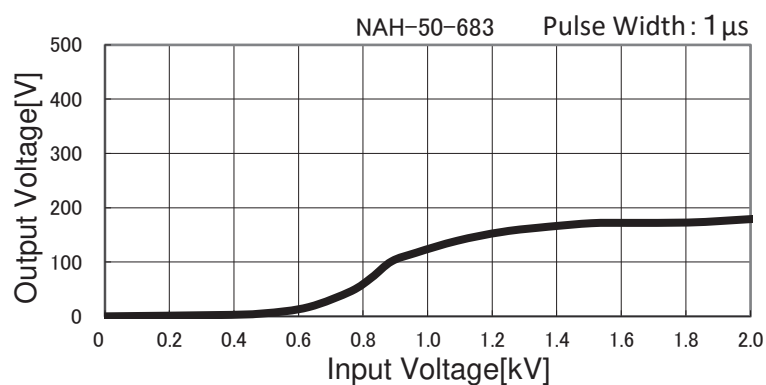
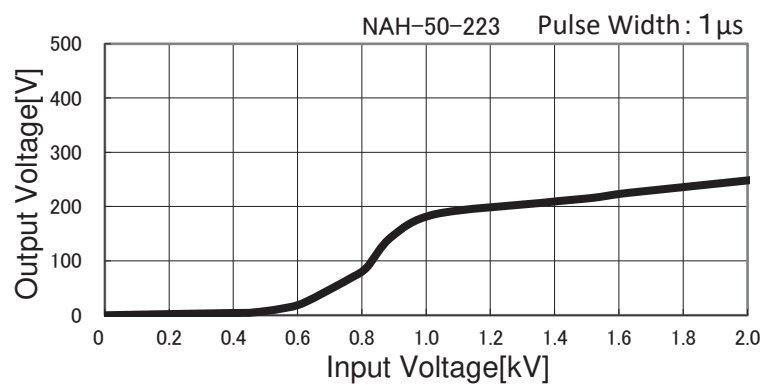
Model		NAH-50-□□□	Temperature 25°C Testing Circuitry Figure A
Item		Attenuation Characteristics	
Object		_____	







Model	NAH-50-□□□		
Item	Pulse Attenuation Characteristics	Temperature	25°C
Object		Testing Circuitry	Figure B





COSEL		Temperature 25°C Testing Circuitry Figure C
Model	NAH-50-□□□	
Item	Leakage Current	
Object	_____	

1.Results

[mA]

Model	Standards	Input Volt.					Note
		100[V]	125[V]	230[V]	250[V]	277[V]	
NAH-50-000	UL60939	0.000	0.000	0.003	0.003	0.004	
NAH-50-471	UL60939	0.025	0.033	0.070	0.077	0.087	
NAH-50-222	UL60939	0.085	0.100	0.220	0.235	0.270	
NAH-50-472	UL60939	0.175	0.225	0.480	0.530	0.600	
NAH-50-223	UL60939	0.900	1.000	1.950	2.050	2.300	
NAH-50-683	UL60939	1.200	1.500	2.800	3.000	3.450	

2.Condition

Leakage current value is concluded after measuring both phases of AC input and by choosing the larger one.

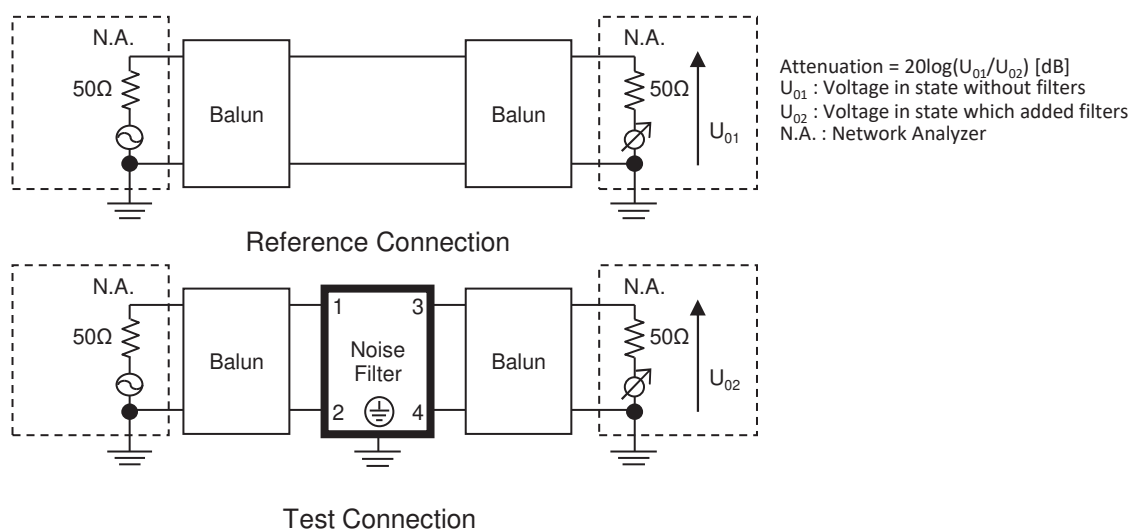


Figure A - 1 Differential mode attenuation measurement

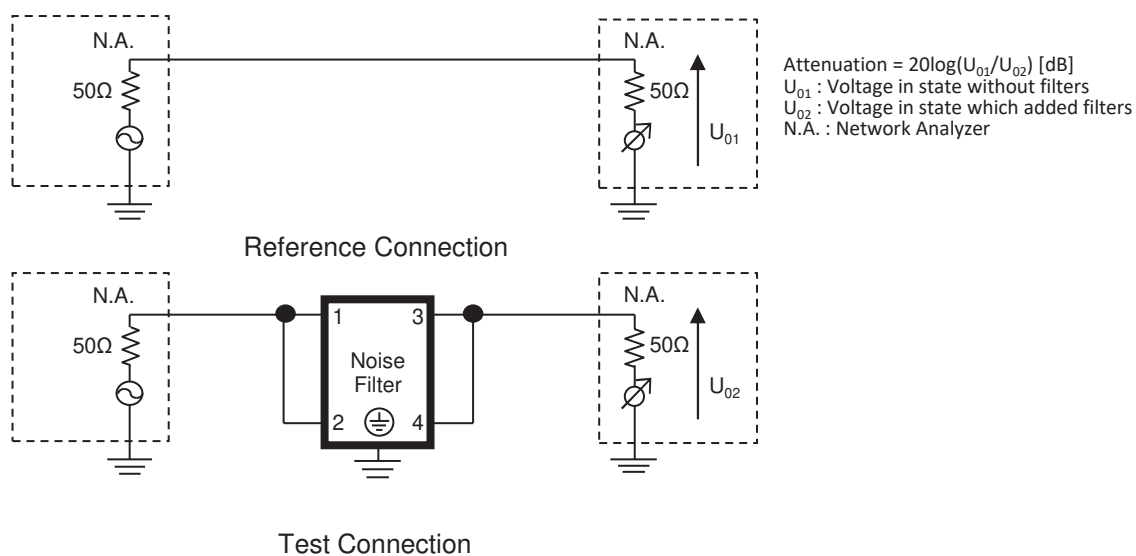
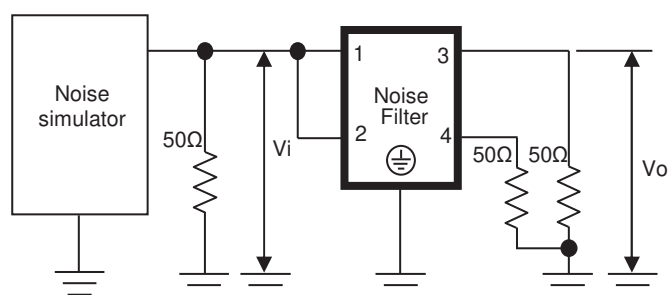
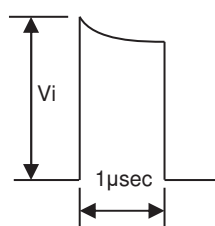


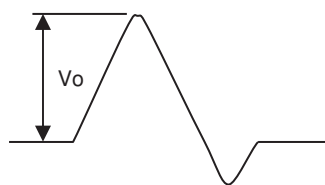
Figure A - 2 Common mode attenuation measurement



Pulse attenuation measurement



Input impulse waveform



Output impulse waveform

Figure B Pulse attenuation measurement

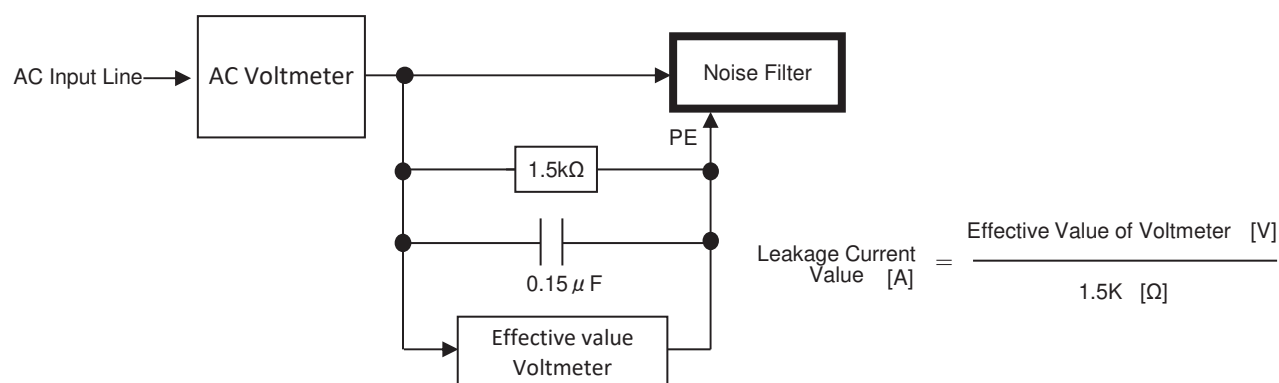


Figure C Leakage current measurement (UL60939)