

# TEST DATA OF NAM-10-□□□

## Noise Filter

Apr. 22. 2005

Approved by : Toshio Watanabe  
Toshio Watanabe Design Manager

Prepared by : Tadayuki Noda  
Tadayuki Noda Design Engineer

**COSEL CO.,LTD.**

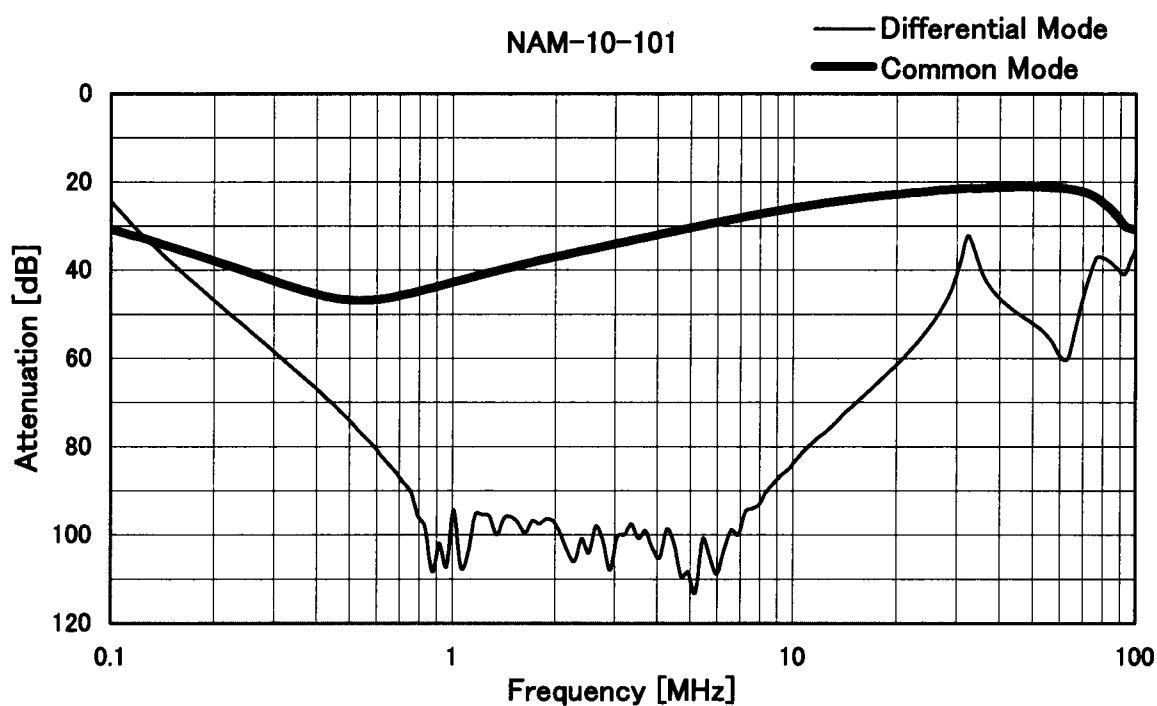
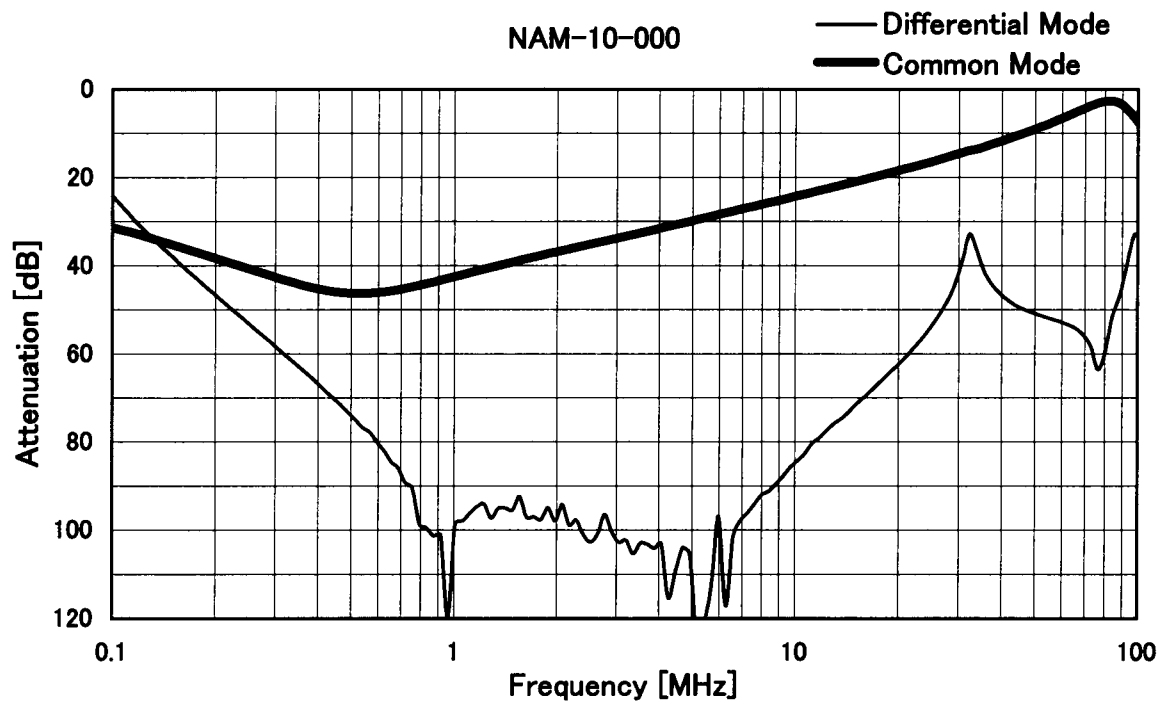
## CONTENTS

1. Attenuation Characteristics . . . . .	1
2. Pulse Attenuation Characteristics . . . . .	4
3. Leakage Current . . . . .	6
4. Figure of Testing Circuitry . . . . .	7

(Final Page 8)

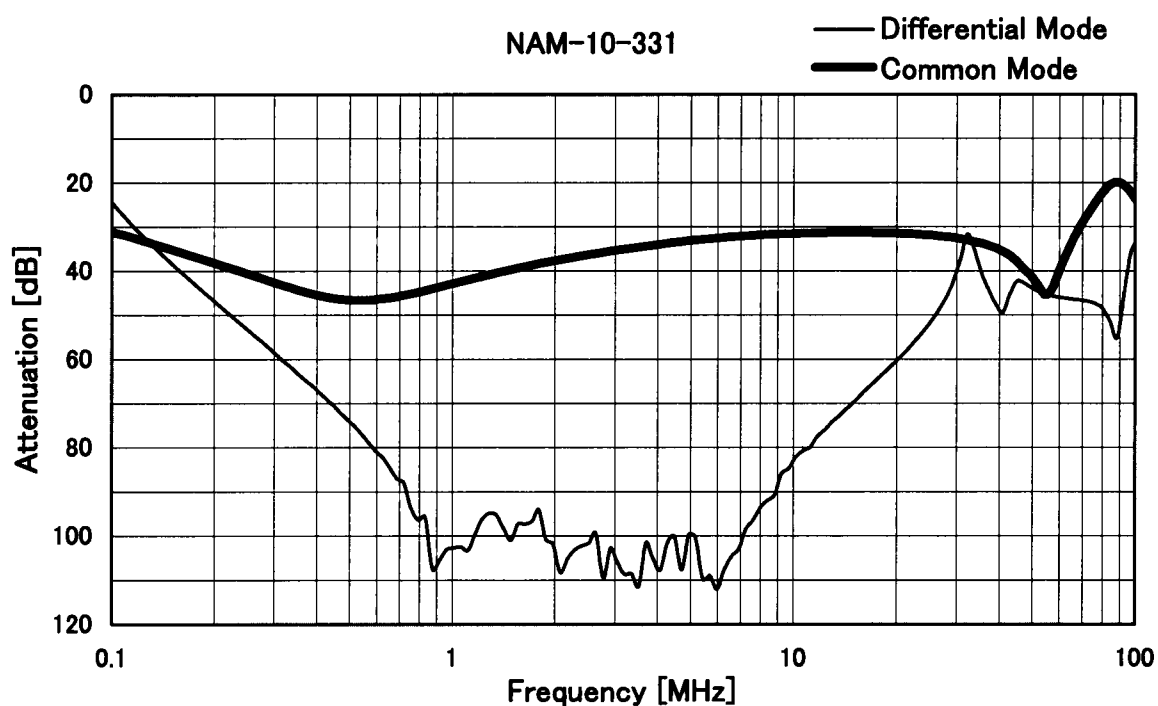
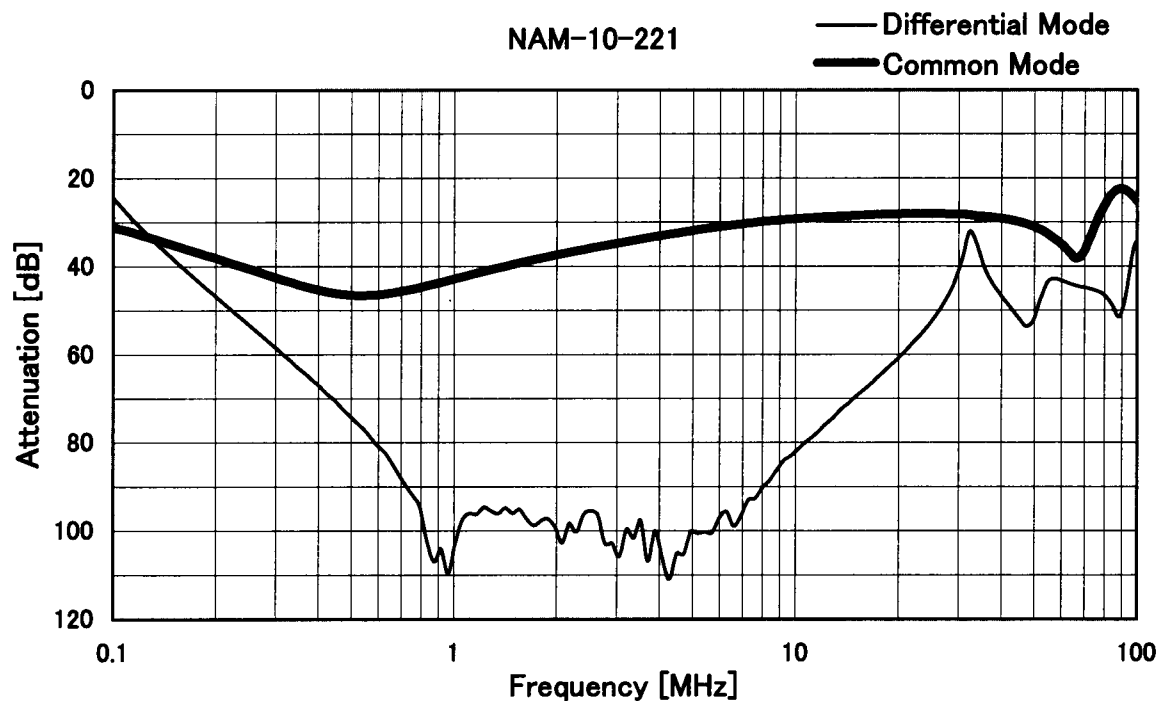
**COSEL**

Model	NAM-10-□□□	Temperature	25°C
Item	Attenuation Characteristics	Testing Circuitry	Figure A
Object	_____		



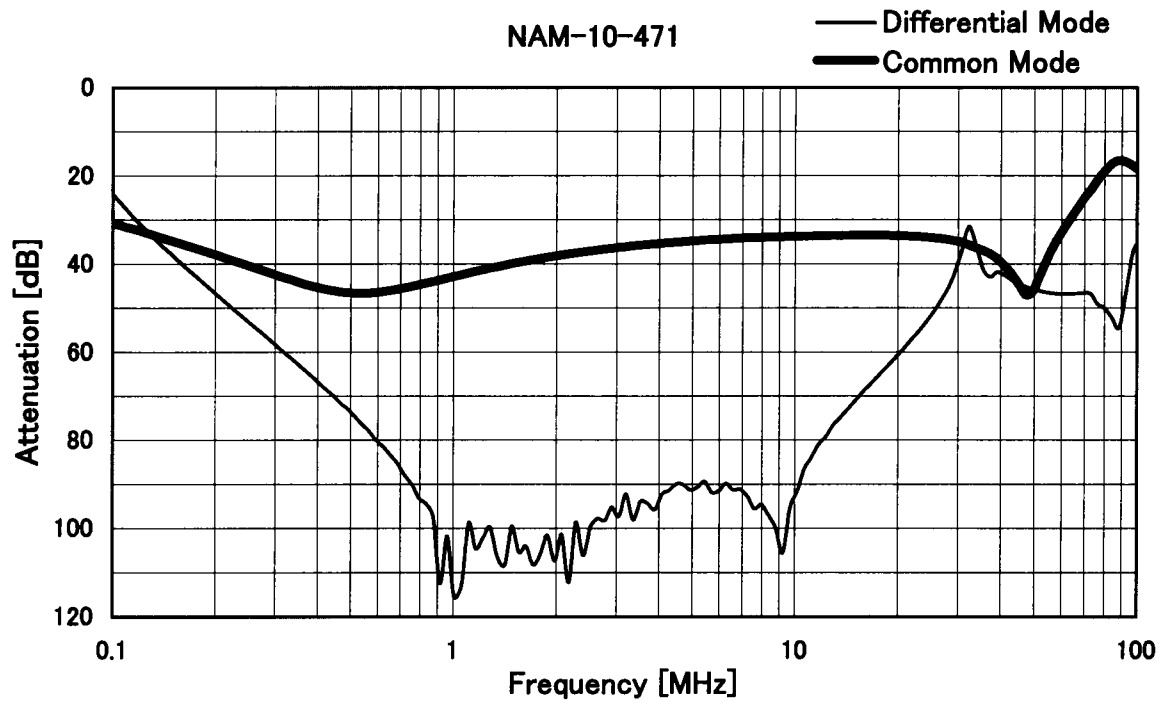
# COSEL

Model	NAM-10-□□□	Temperature	25°C
Item	Attenuation Characteristics	Testing Circuitry	Figure A
Object	_____		



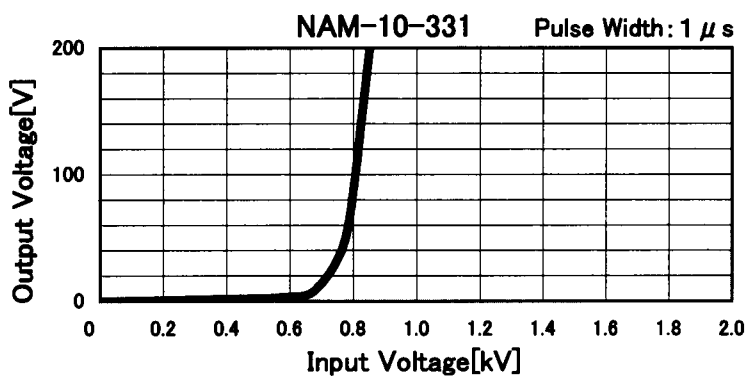
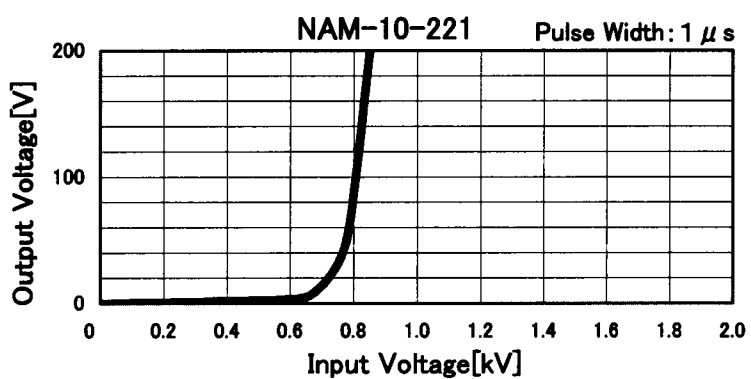
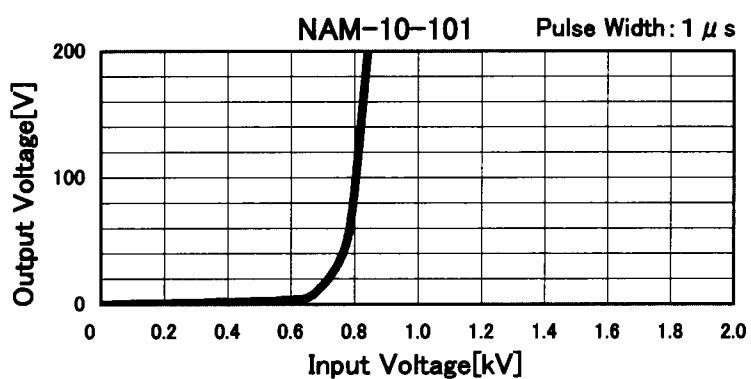
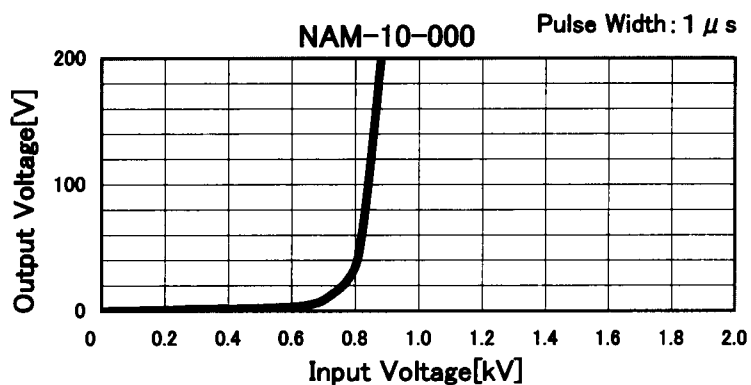
**COSEL**

Model	NAM-10-□□□		
Item	Attenuation Characteristics	Temperature	25°C
Object		Testing Circuitry	Figure A



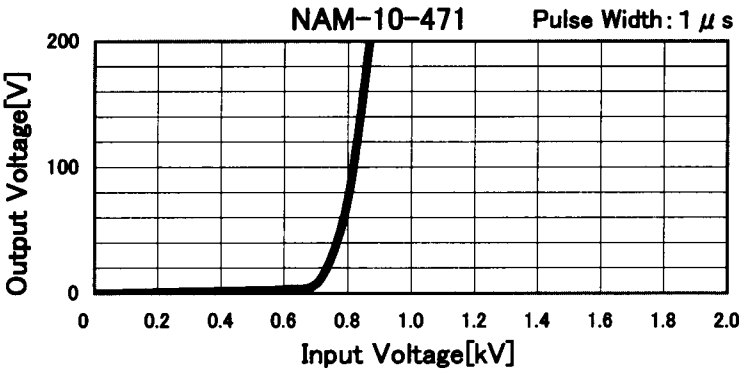
**COSEL**

		Temperature 25°C Testing Circuitry Figure B
Model	NAM-10-□□□	
Item	Pulse Attenuation Characteristics	
Object		





		Temperature 25°C Testing Circuitry Figure B
Model	NAM-10-□□□	
Item	Pulse Attenuation Characteristics	
Object		





		Temperature 25°C Testing Circuitry Figure C
Model	NAM-10-□□□	
Item	Leakage Current	
Object	_____	

## 1.Results

[mA]

Model	Standards	Input Volt.				Note
		100 [V]	125 [V]	230 [V]	250 [V]	
NAM-10-000	UL1283	0.002	0.002	0.004	0.005	
NAM-10-101	UL1283	0.006	0.007	0.013	0.015	
NAM-10-221	UL1283	0.011	0.013	0.025	0.028	
NAM-10-331	UL1283	0.015	0.019	0.038	0.042	
NAM-10-471	UL1283	0.023	0.030	0.061	0.069	

## 2.Condition

Leakage current value is concluded after measuring both phases of AC input and by choosing the larger one.



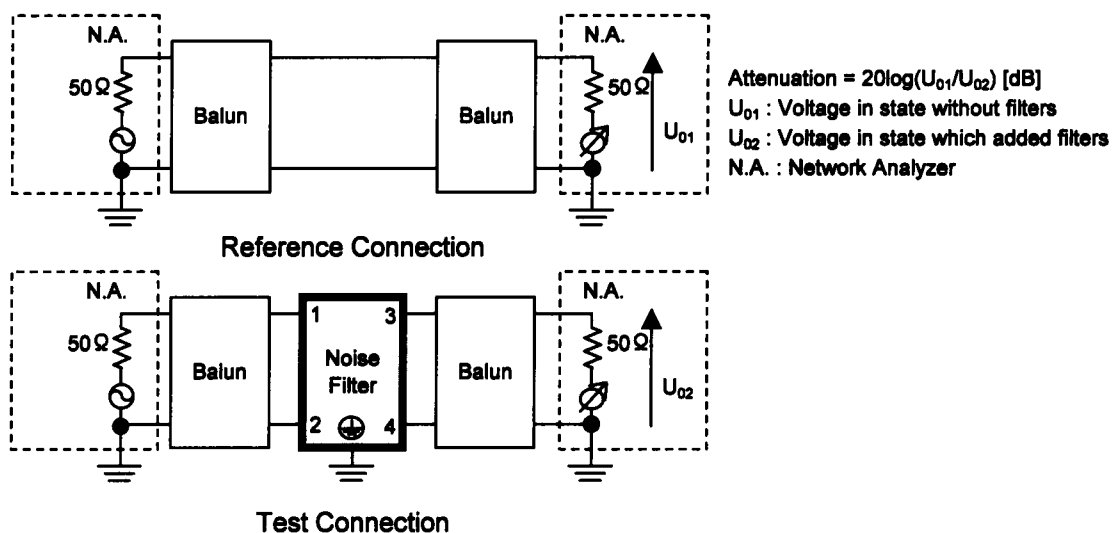


Figure A - 1 Differential mode attenuation measurement

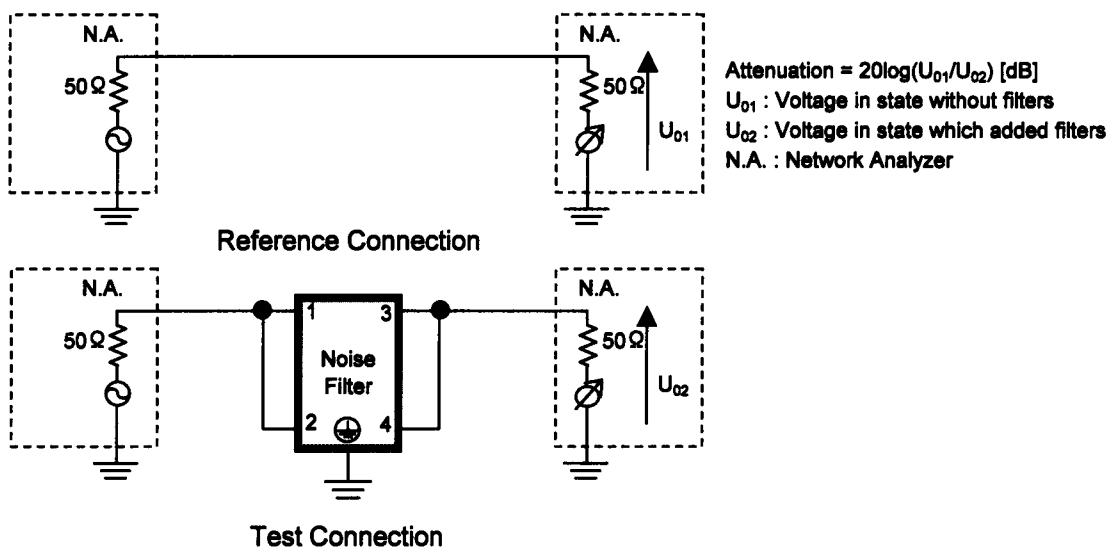
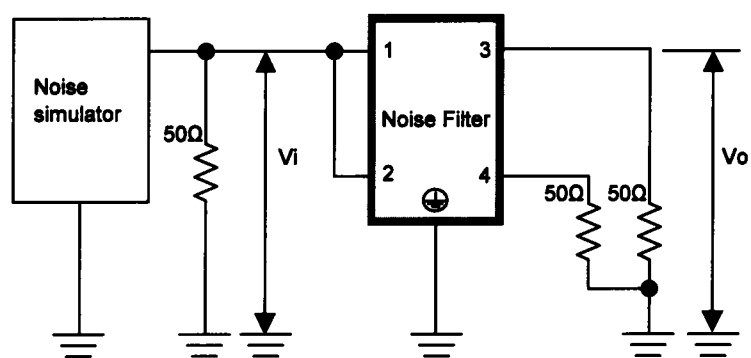


Figure A - 2 Common mode attenuation measurement



Pulse attenuation measurement

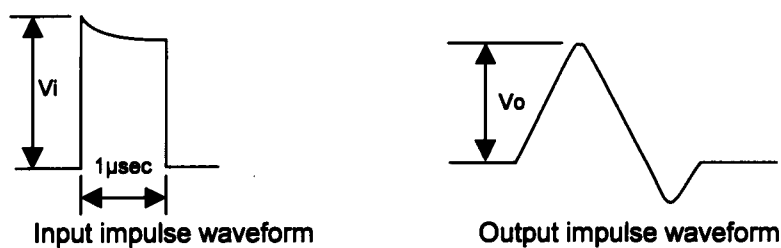


Figure B Pulse attenuation measurement

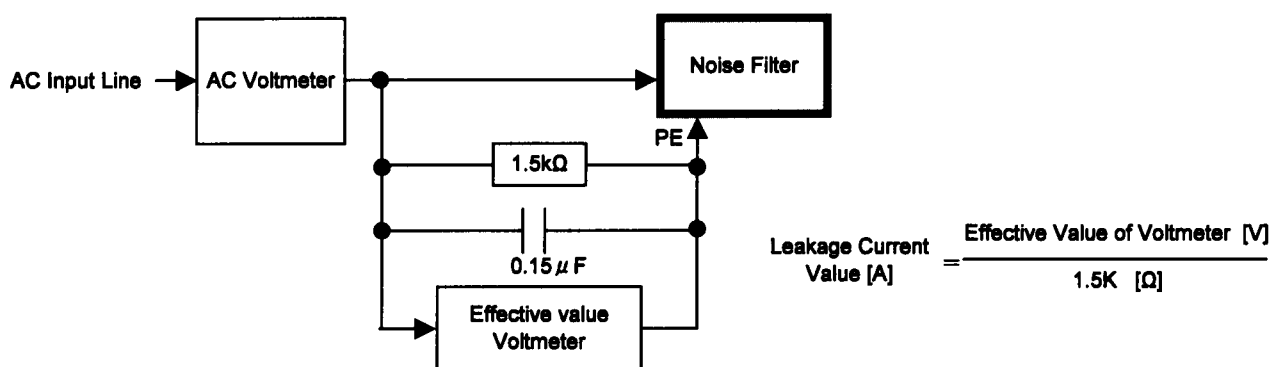


Figure C Leakage current measurement ( UL1283 )