

TEST DATA OF NAM-20-□□□

Noise Filter

Apr. 22. 2005

Approved by : Toshio Watanabe
Toshio Watanabe Design Manager

Prepared by : Tadayuki Noda
Tadayuki Noda Design Engineer

COSEL CO.,LTD.

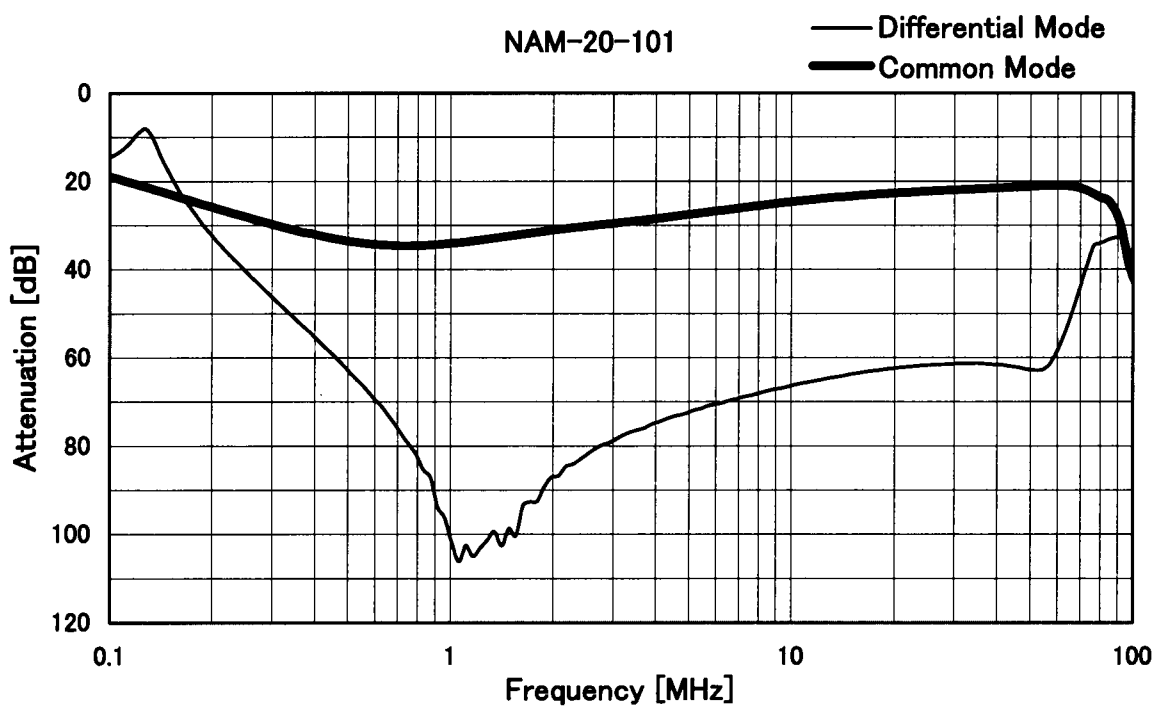
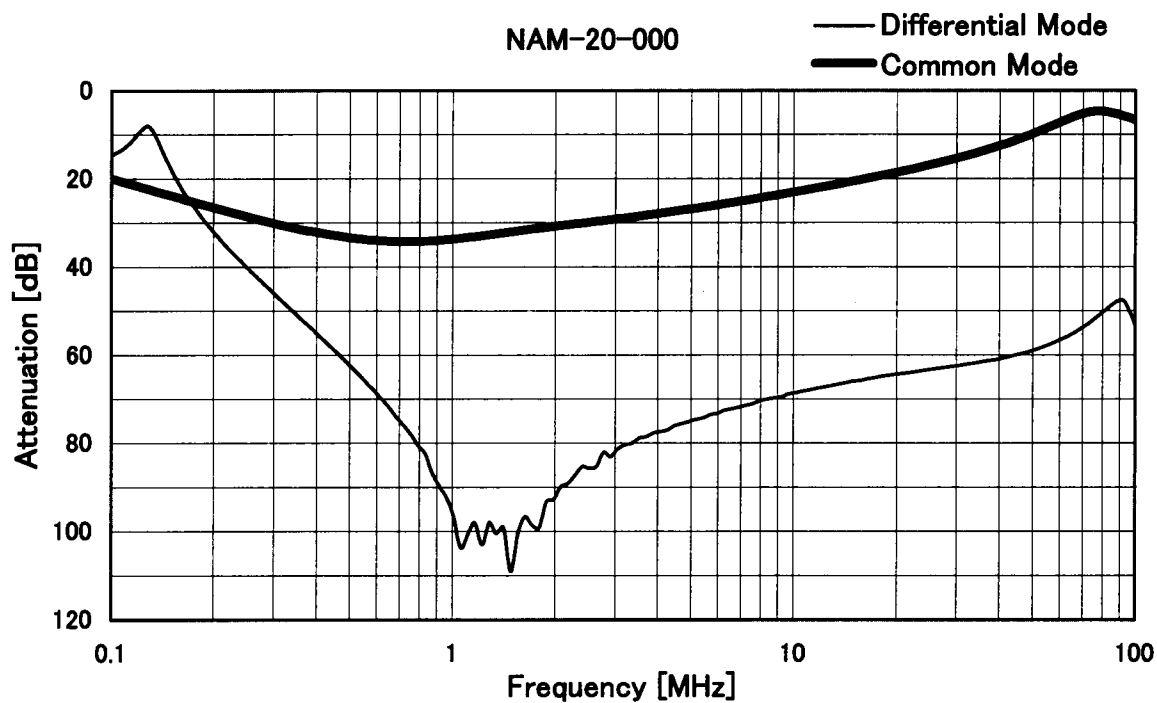
CONTENTS

1.Attenuation Characteristics	1
2.Pulse Attenuation Characteristics	4
3.Leakage Current	6
4.Figure of Testing Circuitry	7

(Final Page 8)

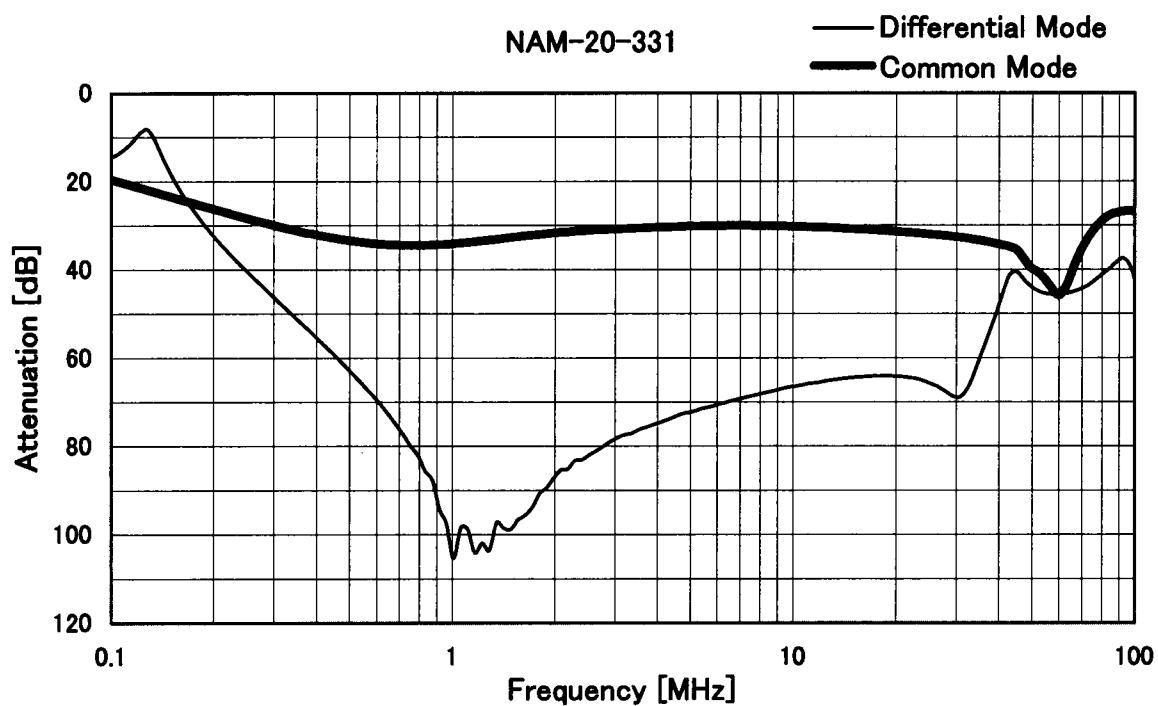
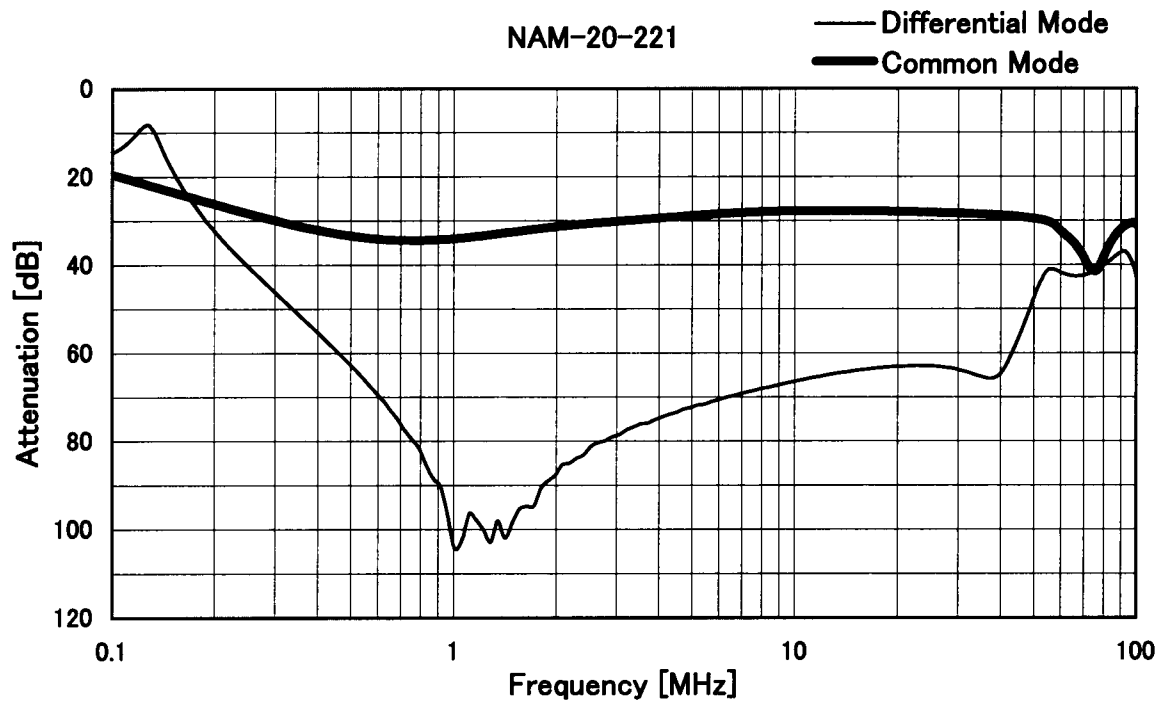
COSEL

Model	NAM-20-□□□	Temperature	25°C
Item	Attenuation Characteristics	Testing Circuitry	Figure A
Object	_____		



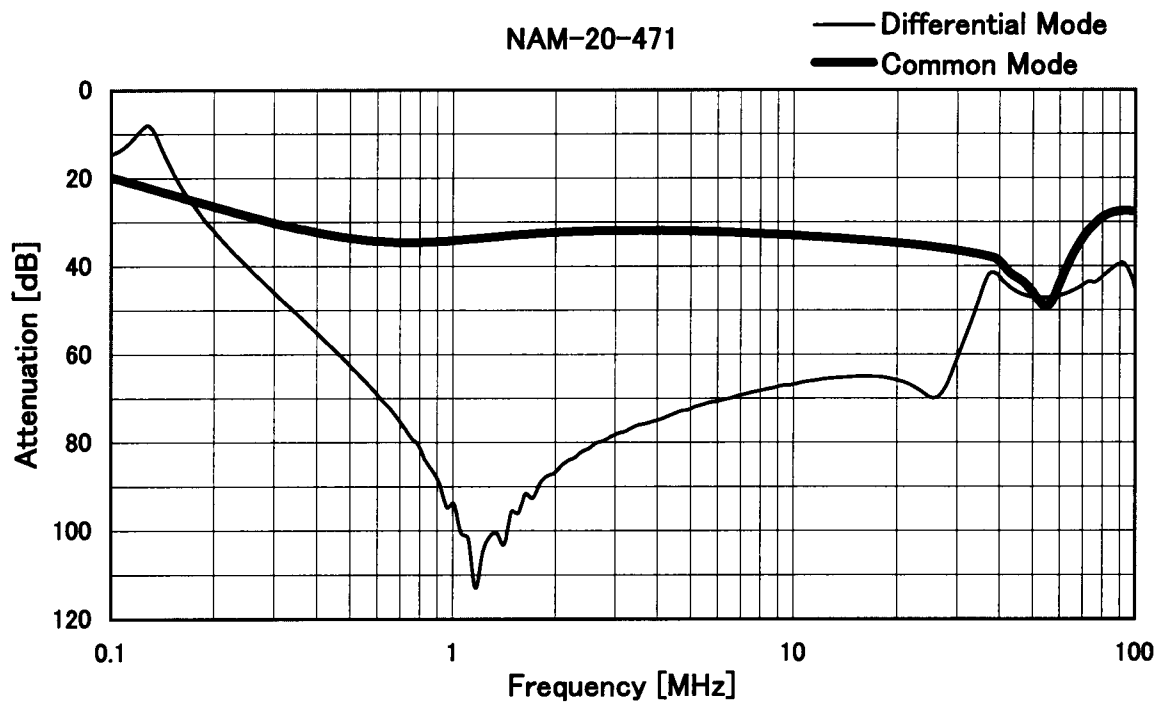
COSEL

Model	NAM-20-□□□	Temperature	25°C
Item	Attenuation Characteristics	Testing Circuitry	Figure A
Object	_____		

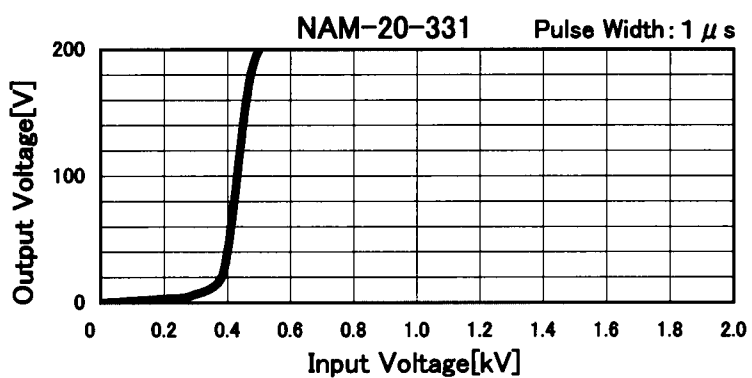
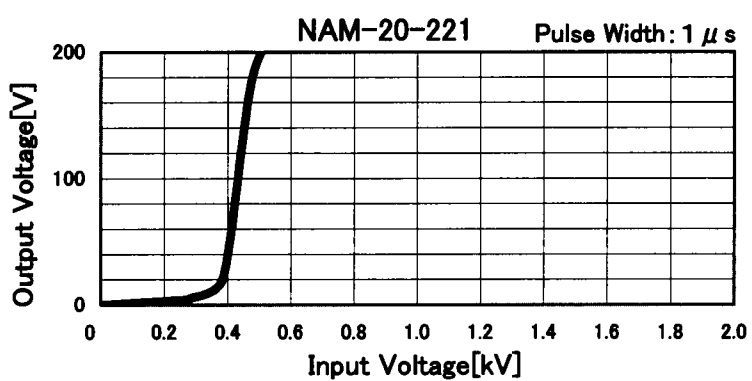
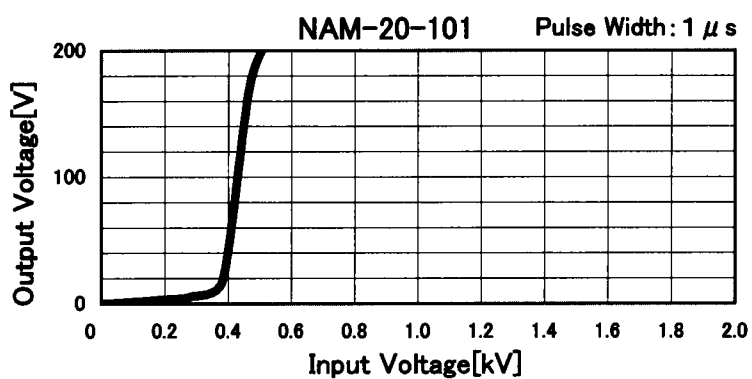
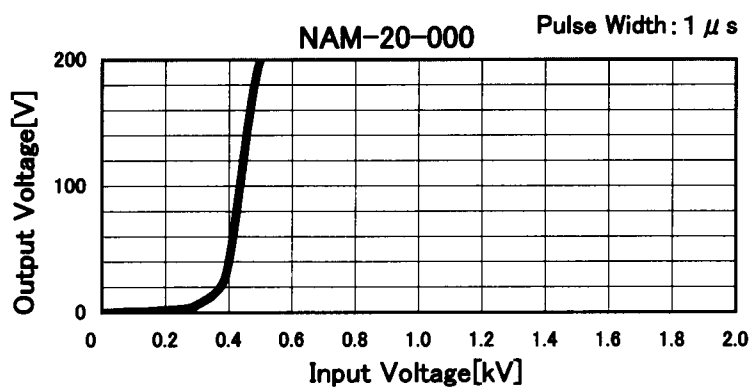


COSEL

Model	NAM-20-□□□	Temperature	25°C
Item	Attenuation Characteristics	Testing Circuitry	Figure A
Object	_____		

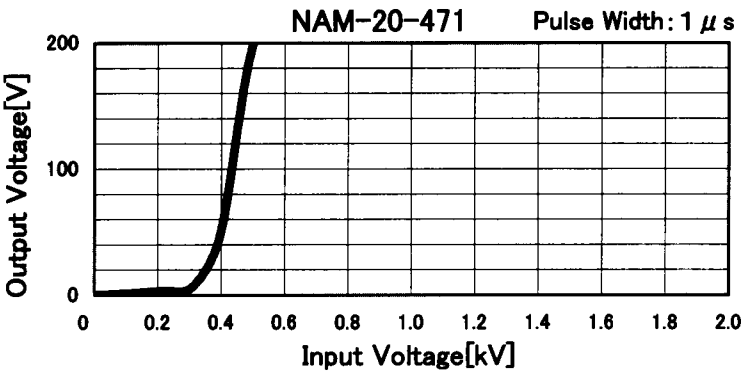


		Temperature 25°C Testing Circuitry Figure B
Model	NAM-20-□□□	
Item	Pulse Attenuation Characteristics	
Object		





		Temperature 25°C Testing Circuitry Figure B
Model	NAM-20-□□□	
Item	Pulse Attenuation Characteristics	
Object		



COSEL

		Temperature 25°C Testing Circuitry Figure C
Model	NAM-20-□□□	
Item	Leakage Current	
Object	_____	

1.Results

[mA]

Model	Standards	Input Volt.				Note
		100 [V]	125 [V]	230 [V]	250 [V]	
NAM-20-000	UL1283	0.002	0.002	0.004	0.005	
NAM-20-101	UL1283	0.006	0.007	0.013	0.015	
NAM-20-221	UL1283	0.011	0.013	0.025	0.028	
NAM-20-331	UL1283	0.015	0.019	0.038	0.042	
NAM-20-471	UL1283	0.023	0.030	0.061	0.069	

2.Condition

Leakage current value is concluded after measuring both phases of AC input and by choosing the larger one.

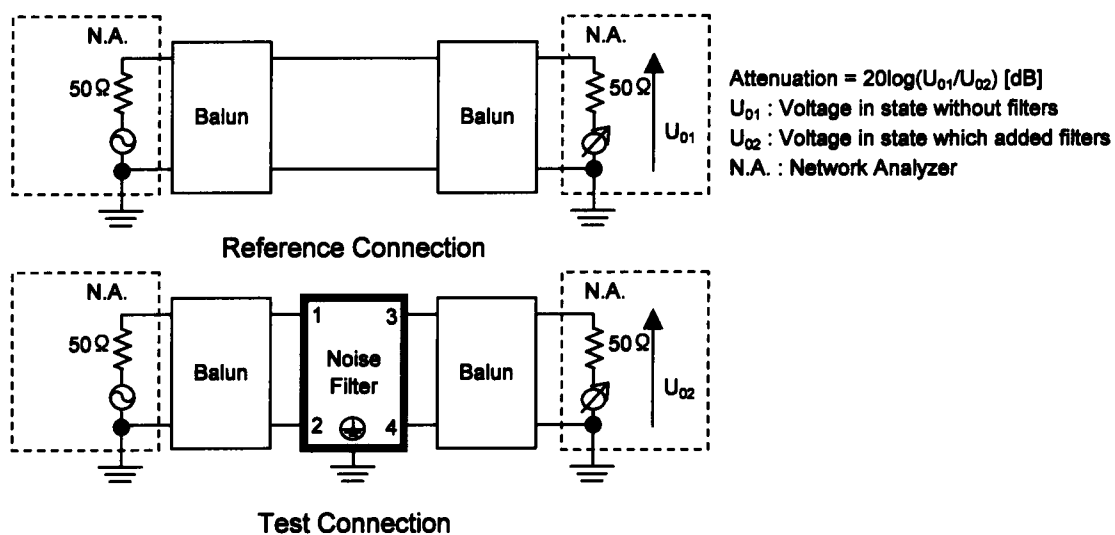


Figure A - 1 Differential mode attenuation measurement

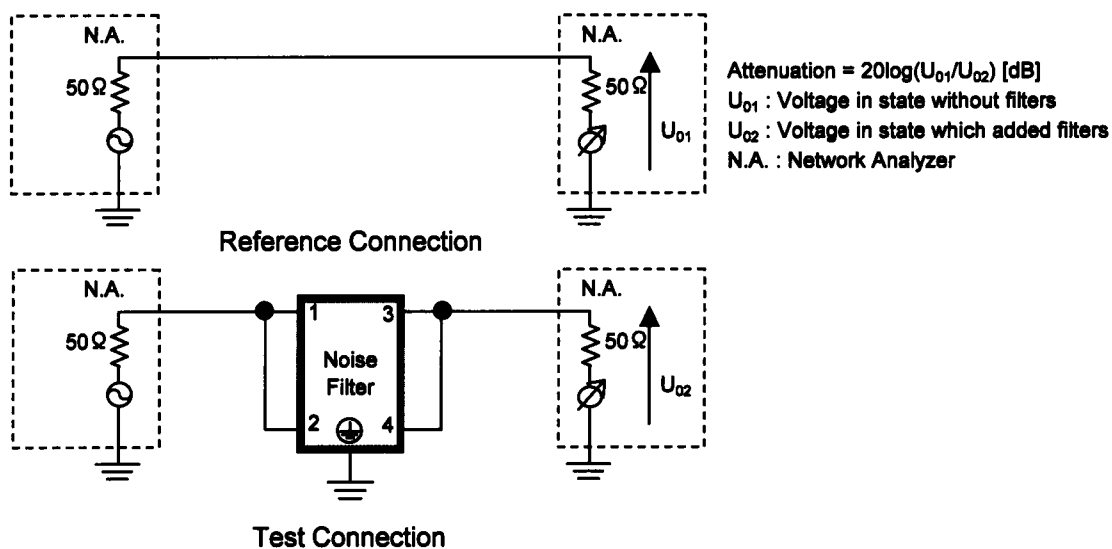
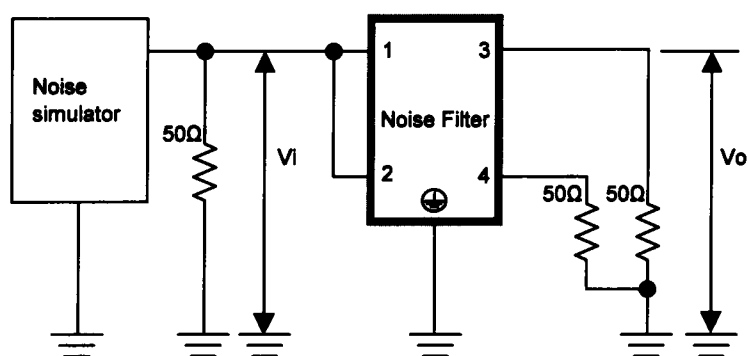


Figure A - 2 Common mode attenuation measurement



Pulse attenuation measurement

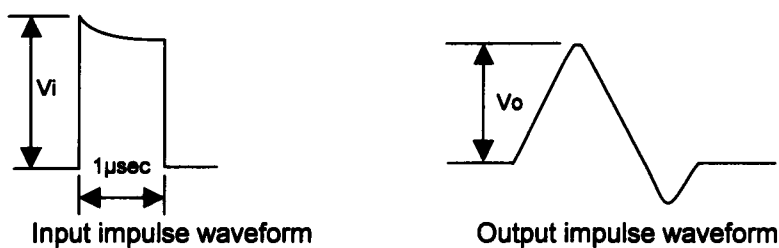


Figure B Pulse attenuation measurement

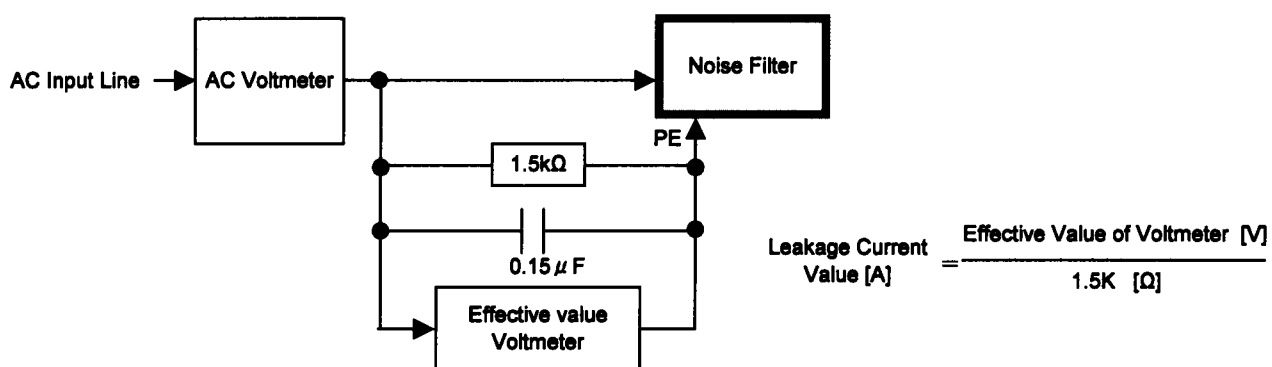


Figure C Leakage current measurement (UL1283)